

UNIVERSAL SERIAL BUS: KUSBX Series

Right Angle USB 3.0 A Type

Product Features

Also Known as SuperSpeed USB
 Available in 1 or 2 Ports
 Meets USB-IF 3.0 Specifications
 Right Angle PC Mount, Through Hole Termination
 Backwards and Forward Compatible to Existing
 USB 2.0 Products
 Data Rates up to 10 Times Faster Than USB 2.0 Version

Performance Specifications

Materials and Finish

Housing

PBT Thermoplastic, UL 94V-0 Rated, Blue Color

Baffle

Nylon66, UL 94V-0 Rated, Blue Color

Contacts A (4 Pin)

Phosphor Bronze

Contacts B (5 Pin)

Brass

Plating

30µ" Gold Plating over Nickel on Contact area,
 Tin Plated on Solder Tails

Shell

Brass, Nickel Plated

Mechanical Characteristics

Insertion Force: 3.5Kg Max.

Withdrawal Force: 1.0Kg Min.

Durability: See Drawing

Operating Temperature: See Drawing

Electrical Characteristics

Rated Current

1.8A (Pin 1&4) / 0.25A all Other Pins

Insulation Resistance

100 Megohms Min.

Contact Resistance

30 milliohms Max.

Dielectric Withstanding Voltage

100V AC Min.

2D Drawing	IGES	STEP	3D PDF
Solder Profile	CofC RoHS Compliant	CofC REACH Compliant	UL Plastic File
Certificate of Origin	Check Stock	Request a Sample	Send Us An Email

Generated Part Number

Part Number Builder

<input type="text"/>	-	<input type="text"/>	<input type="text"/>	<input type="text"/>
Series		Type	Insulator Color Option	Plating Option

Series

KUSBX - Right Angle Universal Serial Bus

Type

AS1N9-1 - Type A Socket, 9 Pin, 2.15mm Pin Length

AS1N9-2 - Type A Socket, 9 Pin, 3.10mm Pin Length

AS2N9-1 - Type A Stacked, 9 Pin Top/Bottom, 2.15mm Pin Length

AS2N9-2 - Type A Stacked, 9 Pin Top/Bottom, 3.10mm Pin Length

Insulator Color Option

BL - Blue

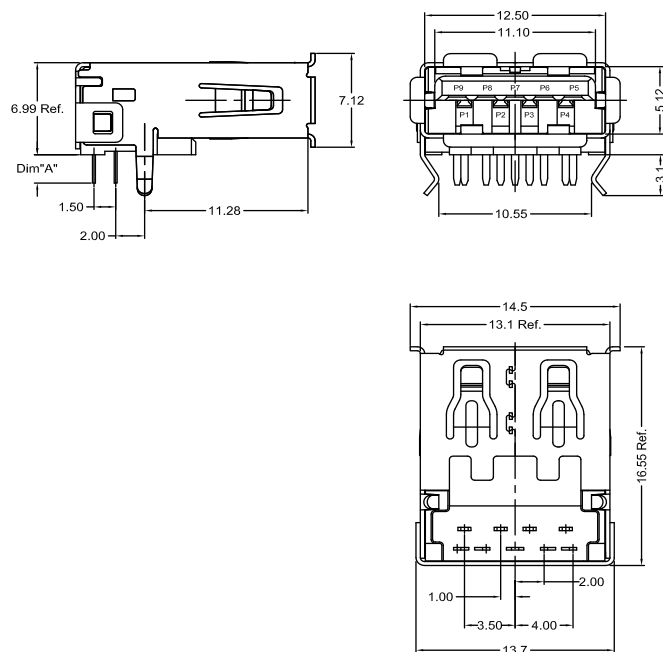
Plating Option

30 - 30µ" Gold Plating

Contact Kycon for other options

KUSBX-AS1N9-x-BL30

Dimensions in mm



X-ON Electronics

Largest Supplier of Electrical and Electronic Components

Click to view similar products for [USB Connectors](#) category:

Click to view products by [Kycon](#) manufacturer:

Other Similar products are found below :

[65-647-8-BK-BU](#) [950](#) [952](#) [E8144-B01021-L](#) [A-USB A-LP-SMT-C](#) [A-USB B-TOP-C](#) [MUSBA511N5](#) [MUSBD11135](#) [217450-1](#) [CA 6 W LD](#)
[KMBVX-TH-5S-B30](#) [896-30-004-00-000000](#) [KUSBVX-BS1N-W30](#) [KUSBX-AP-KIT-SCBLK](#) [KUSBX-AS2N-W](#) [KUSBX-SMT2AP1S-W](#)
[KUSBX-SMT2AP1S-W30](#) [935](#) [957](#) [30-498-6](#) [17-210051](#) [1734082-1](#) [30-1574](#) [30-470](#) [30-489](#) [30-541](#) [30-572-3](#) [MAB 8 SN V](#) [A-USB A-](#)
[2P-C](#) [MIKROE-1451](#) [USBFTV2PEM2G](#) [USBFTVC6ZN](#) [KUSBX-AS2N-W30](#) [KUSBX-SLAS1N-W](#) [KUSBX-SMT-AS1N-W30](#) [4689-1](#) [1-](#)
[1734084-2](#) [E8110-001-01](#) [MUSBA81130](#) [33UBARS1-04SW11](#) [33UBAR-04SW11](#) [USBF21ZNSCC](#) [USBBFTV6ZC](#) [10135326-001LF](#)
[M9177/3-1](#) [USB-A-S-F-B-VT](#) [925](#) [4198](#) [690-024-633-031](#) [KUSBEX-BSFS1N-W](#)