



## UNIVERSAL SERIAL BUS: KUSBX-SMT Series

### USB Type C Top Mount - Dual Row SMT Contacts

#### Product Features

USB Version 3.1 - Gen2 (10Gbps)  
Dual Row SMT Contacts with Through Hole Shield Tabs

#### Performance Specifications

##### Materials and Finish

##### Insulator

High Temperature, UL94V-0 Rated,  
Color Black, White available with mins

##### Contact Material:

Copper Alloy

##### Plating:

Gold 30 $\mu$ " plated on both Contact Area and on Solder Tails.

##### Shield:

Stainless Steel, Min. 50 $\mu$ " Nickel Plated

#### Electrical Characteristics

##### Rated Voltage:

100V AC

##### Current Rating

VBUS Pins, GND Pins : 3A

VCONN 1.25A

Other Pins 0.25A

##### Contact Resistance

40 milliohms Max.

##### Insulation Resistance

100 Megohms Min.

##### Dielectric Withstanding Voltage

100V AC RMS For 1 Minute

#### Mechanical Characteristics:

**Insertion Force:** 5N- 20N

**Extraction Force:** 8N - 20N

**Durability** 10000 Mating Cycles Min.

**Operating Temperature:**

-30°C to +85°C

2D Drawing	IGES	STEP	3D PDF
Solder Profile	CofC RoHS Compliant	CofC REACH Compliant	UL Plastic File
Certificate of Origin	Check Stock	Request a Sample	Send Us An Email

#### Generated Part Number

#### Part Number Builder

<input type="text"/>	-	<input type="text"/>	<input type="text"/>	<input type="text"/>	<input type="text"/>
Series		Type	Insulator Color	Plating	Packaging

#### Series

KUSBX-SMT - USB Top Mount - Dual Row Contacts

#### Type

CS2 - C Type

#### Insulator Color Option

B - Black

W - White

#### Plating Option

30 - 30 $\mu$ " Gold Plating

Blank - Gold Plating

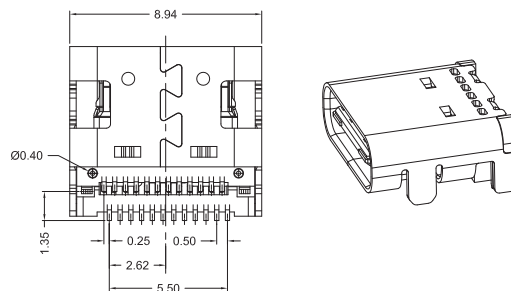
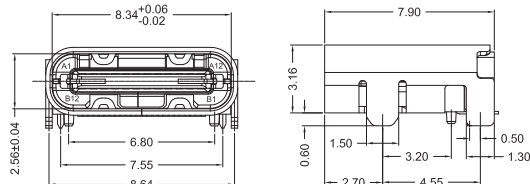
#### Packaging

TR - Tape and Reel

Contact Kycon for more options

#### KUSBX-SMT

Dimensions in mm



## X-ON Electronics

Largest Supplier of Electrical and Electronic Components

*Click to view similar products for [USB Connectors](#) category:*

*Click to view products by [Kycon](#) manufacturer:*

Other Similar products are found below :

[65-647-8-BK-BU](#) [950](#) [952](#) [E8144-B01021-L](#) [A-USB A-LP-SMT-C](#) [MUSBA511N5](#) [MUSBD11135](#) [217450-1](#) [CA 6 W LD](#) [KMBVX-TH-5S-B30](#) [896-30-004-00-000000](#) [KUSBVX-BS1N-W30](#) [KUSBX-AP-KIT-SCBLK](#) [KUSBX-AS2N-W](#) [KUSBX-SMT2AP1S-W](#) [KUSBX-SMT2AP1S-W30](#) [935](#) [957](#) [30-498-6](#) [17-210051](#) [1734082-1](#) [30-1574](#) [30-470](#) [30-489](#) [30-541](#) [30-572-3](#) [MAB 8 SN V](#) [A-USB A-2P-C](#) [MIKROE-1451](#) [USBFTV2PEM2G](#) [USBFTVC6ZN](#) [KUSBX-AS2N-W30](#) [KUSBX-SLAS1N-W](#) [KUSBX-SMT-AS1N-W30](#) [4689-1](#) [1-1734084-2](#) [E8110-001-01](#) [MUSBA81130](#) [33UBARS1-04SW11](#) [33UBAR-04SW11](#) [USBF21ZNSCC](#) [USBBFTV6ZC](#) [MUSBB151341](#) [10135326-001LF](#) [M9177/3-1](#) [USB-A-S-F-B-VT](#) [925](#) [4198](#) [690-024-633-031](#) [KUSBEX-BSFS1N-W](#)