

Kycon, Inc.



Product Catalog

Table of Contents

Page 1: D-Subminiatures

Page 2: Universal Serial Bus

Page 3: Universal Serial Bus Cont'd

Page 4: Modular Jacks

Page 5: Modular Jacks Cont'd

Page 6: Audio Jacks

Page 7: Audio Jacks Cont'd

Page 8: DC Power

Page 9: DC Power Cont'd

Page 10: HDMI & IP67

Page 11: Circular Din/Mini Din

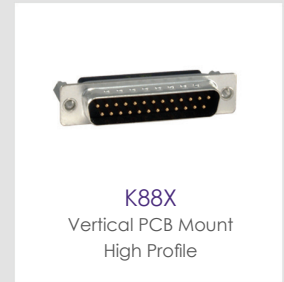
Page 12: Custom Cables

D-Subminiatures



	Right Angle	Vertical	IDC	SMT	Through Hole	Solder Cup	High Density	Stacked/ Multi Port	PC99	High Temp	Ferrite
K202XHT	●			●			◎			●	
K22X	●				●				◎	◎	◎
K31X	●				●		◎		◎	◎	
K42X	●				●		◎	●	◎	◎	◎
K61X	●				●		●		◎	◎	
K66X	●				●		●		◎	◎	◎
K85X		●			●	◎				◎	◎
K86X		●			●	◎	●			◎	◎
K88X		●			●						◎
K99X			●								

◎ Contact Kycon for this option



Kycon initially offered Dsub Connectors in 1988. Throughout the years our product lines expanded to include USB, Modular Jacks, DC Power Connectors, Audio Jacks, Mini Dins, HDMI, and Cable Assemblies.

Kycon's current product offerings can be found in this catalog.

Universal Serial Bus 2.0



KUSBX
Right Angle PCB Mount
A&B Type



KUSBX-SMT
Right Angle SMT
A&B Type



KUSBXHT-SB
A-Type Short Body



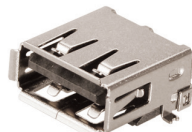
KUSBX-SL
A-Type Slim Upright

	Through Hole	SMT	Mid-Mount	Right Angle	Vertical	Slim Upright	Low Profile	Plug	A-Type	B-Type	Mini B-Type	Micro B-Type	Micro AB-Type	Stacked	High temp
KUSBX	●			●					●	●				⊙	⊙
KUSBX-SMT		●		●					●	●					●
KUSBXHT-SB	●			●					●						●
KUSBX-SL	●					●			●						⊙
KUSBX-SMT2		●		●			●		●						●
KUSBX-SMT4		●		●					●						●
KMBX	●	●		●							●				●
KMBVX	●				●						●				⊙
KMMLX		●	●									●			●
KMMX		●		●								●	●		●
KMMVX		●			●							●			●
KUSBLPX	●	●					●		●					●	⊙
KUSBVX	●	●			●				●	●				●	⊙
KUSBVLPX	●				●		●		●						
High Retention	●			●					●	●					●

⊙ Contact Kycon for this option



KUSBX-SMT2
Surface Mount
A-Type Plug



KUSBX-SMT4
Right Angle
SMT A-Type



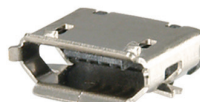
KMBX
Mini B-Type
SMT & PCB Mount



KMBVX
Mini B-Type Vertical



KMMLX
Micro B-Type
Mid-Mount



KMMX
Micro AB & B-Type
Surface Mount



KMMVX
Micro B-Type Vertical

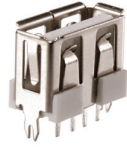


KUSBLPX
Low Profile A-Type
Single & Stacked
PCB Right Angle

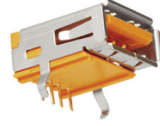
Universal Serial Bus 2.0, 3.0 & 3.1



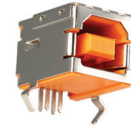
KUSBVX
Vertical PCB Mount
A&B Type



KUSBVLPX
Low Profile
Vertical A-Type



High Retention
A-Type



High Retention
B-Type



KUSBX-MM-CS
C-Type Mid-Mount 3.1



KUSBX-SMTH
C-Type Hybrid 3.1
Top Mount

	Through Hole	SMT	Hybrid Contacts	Mid-Mount	Right Angle	Vertical	Slim Upright	Plug	A-Type	B-Type	C-Type	Micro B-Type	Micro AB-Type	Stacked	High Temp
KUSBX-MM-C		●		●							●				●
KUSBX-SMTH			●		●						●				●
KUSBX-SMT-CS		●			●						●				●
KUSBVX-SMT-CS		●				●					●				●
KMMX		●			●							●	●		●
KUSBVX	●					●			●	●					⊙
KUSBX-SLAS1N9	●						●		●						⊙
KUSBX-SMT-AP9		●		●				●	●						●
KUSBX	●				●				●	●				●	

⊙ Contact Kycon for this option



KUSBX-SMT-CS
C-Type Dual Row 3.1
SMT Top Mount



KUSBVX-SMT-CS
C-Type Vertical 3.1



KMMX
Micro 3.0



KUSBVX
A&B Type Vertical 3.0



KUSBX-SLAS1N9
A-Type Slim Upright 3.0



KUSBX-SMT-AP9
Surface Mount A-Type
Plug 3.0



KUSBX
A-Type 3.0
Single & Stacked



KUSBX
B-Type 3.0

Modular Jacks



	Positions	Contacts	Ganged	Right Angle	Vertical	Mid-Mount	Through Hole	SMT	Shielded	LED	Panel Stops	Keyed	High Temp
GA2X	8	8	●	●			●		⊙				
GA2MJLX	8	8	●	●			●		⊙	●			
GDCX	4, 6, 8	4, 6, 8			●		●		⊙		⊙	⊙	⊙
GDLX	6, 8	2, 4, 6, 8		●			●	●	⊙		⊙	⊙	⊙
GDTX	8	8			●		●		●				⊙
GDWLX	8	8			●		●		●	●			
GDWX	8	8			●		●		●				
GDX	4, 6, 8	2, 4, 6, 8		●			●				⊙	⊙	
GLX	4, 6, 8, 10	2, 4, 6, 8, 10		●			●		●		⊙		
GMX	4, 6, 8, 10	2, 4, 6, 8, 10		●			●	●	⊙			⊙	⊙
GMJXHT-MM	8	8				●			●				●
GSX	8	8		●			●		⊙				⊙
GSLX	8	8		●			●		⊙	●			
GTVX	4, 6, 8	4, 6, 8			●			●	⊙				●
GWLX	8	8		●			●	●	⊙	●			●
GWLEX	8	8		●			●	●	⊙	●			⊙
GWX	8	8		●			●	●	⊙				●
GSGX	8	8	●	●			⊙		⊙				⊙
GSLGX	8	8	●	●			●		⊙	●			
GWLGX	8	8	●	●			●		●	●			

⊙ Contact Kycon for this Option

Modular Jacks (continued)



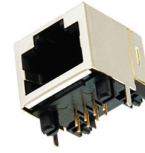
GTVX
Vertical Surface Mount



GWLX
.531" Height PCB Mount
Right Angle with LED



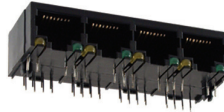
GWLEX
.531" Height PCB Mount
Right Angle with LED



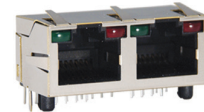
GWX
.531" Height Right Angle



GSGX
.543" Height Ganged
Cat 5 Right Angle



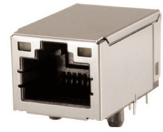
GSLGX
.543" Height Ganged
Right Angle with LED



GWLGX
.531" Height Ganged
PCB Mount Right Angle
with LED



G1LX
RJ45 with 10/100 Magnetics
Tab Down with LED



G2LX
RJ45 with 10/100 Magnetics
Tab Up with LED



G3LX
RJ45 with 10/100 Magnetics
Vertical with LED



G4LX
RJ45 with Gigabit Magnetics
with LED



G5LX
Dual Port RJ45 with
Gigabit Magnetics with LED



G7LX
RJ45 with 10/100 Magnetics
& POE, with LED



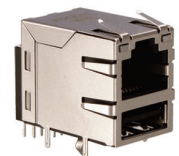
G8X
RJ45 with 10/100 Magnetics
& POE



G10X
Dual Stack RJ45 with
Gigabit Magnetics



GLPLX
Low Profile RJ45 with Gigabit
Magnetics, with LED



GSP1X
RJ45 with Gigabit Magnetics
over USB

	Positions	Contacts	Ganged	Right Angle	Vertical	Through Hole	SMT	Shielded	LED	Magnetics	High Temp
G1LX	8	8		●		●		●	●	●	●
G2LX	8	8		●		●		●	●	●	●
G3LX	8	8			●	●		●	●	●	
G4LX	8	8		●		●		●	●	●	
G5LX	8	8	●			●		●	●	●	
G7LX	8	8		●		●		●	●	●	●
G8X	8	8		●		●		●		●	
G10X	8	8		●		●		●		●	
GLPLX	8	8		●			●	●	●	●	●
GSP1X	8	8		●		●		●	●	●	

3.5mm Audio Jacks



STX-3000
PCB Mount Plastic Barrel



STX-3081
PCB Mount Low Profile



STX-3100
PCB Mount



STX-3120
PCB Mount Plastic Barrel



STX-3150
PCB Mount
Slim Design Upright



STX-3200
PCB Mount



STX-3500
Surface Mount



STX-3501
PCB Mount



STPX-3501
Panel Mount



STX-35017
PCB Mount

	Mono	Stereo	4 Pole	5 Pole	Right Angle	Vertical	Panel Mount	Mid-Mount	Through Hole	SMT	Plastic Barrel	Threaded	PC99	High Temp
STX-3000		●			●				●		●			
STX-3081	●	●			●				●			⊙		
STX-3100		●			●				●			⊙	⊙	⊙
STX-3120	●	●			●				●		●		⊙	⊙
STX-3150	●	●			●				●			⊙	⊙	
STX-3200		●			●				●			⊙	⊙	
STX-3500		●			●					●	●		⊙	●
STX-3501		●			●				●		●			●
STPX-3501		●					●					⊙		
STX-35017			●		●				●		●			
STX-35332		●			●					●	●		⊙	●
STX-35382		●			●					●	●			●
STX-35061			●		●				●					●
STX-353E7A			●		●				●					●
STX-353K7A			●			●			●					●
STX-35398A		●			●			●	●					●
STX-35398E		●			●			●	●		●			●
STX-3680		●				●			●		●		⊙	
STX-3790		●				●			●		●		⊙	
STX-4235		●			●				●		●			
STX-4335		●			●				●		●		●	
STX-3542				●						●				●

⊙ Contact Kycon for this option

3.5mm Audio Jacks (continued)



2.5mm Audio Jacks



	Stereo	4 Pole	Through Hole	Mid-Mount	SMT	High Temp
STX-2000	●		●			
STX-2500	●				●	●
STX-25406		●			●	●
STX-25427		●			●	●
STX-25442		●		●		●
STX-2550	●				●	●

DC Power

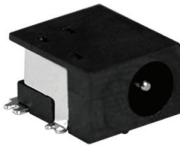
	Contacts	SMT	Right Angle	Vertical Mount	Mid-Mount	1mm & 1.3mm Inner Pin DIA	2.0mm & 2.5mm Inner Pin DIA	Locking	High Current	Shielded	Crimped	High Temp
KLDX	●		●			●	●				◎	◎
KLDX-LT	●		●				●	●				
KLDX-SMT		●	●			●	●					●
KLDX-SMT2		●	●				●					●
KLDHCX	●		●				●		●		◎	
KLDHCX-8	●		●				●		●	●		
KLDHCX-LT	●		●				●	●	●			
KLDHCX-MM					●		●		●	●		●
KLDVX-SMT		●		●			●					●



KLDX
2.0mm/2.5mm
Right Angle Through Hole



KLDX-LT
2.0mm/2.5mm
Right Angle Locking Type



KLDX-SMT
1.0mm/1.3mm
Surface Mount



KLDX-SMT2
2.0mm/2.5mm
Surface Mount



KLDHCX
2.0mm/2.5mm
Right Angle 5A



KLDHCX-8
2.0mm/2.5mm
Right Angle 8A



KLDHCX-LT
2.0mm/2.5mm Right Angle
Locking Type 5A



KLDHCX-MM
2.0mm/2.5mm
Mid-Mount 5A



KLDVX-SMT
2.0mm/2.5mm
Vertical SMT

DC Power (continued)

	Contacts	Through Hole	Right Angle	Vertical Mount	Panel Mount	Cable Mount	Plug	2.0mm & 2.5mm Inner Pin/DIA	Locking	Snap & Lock	High Current	Shielded	High Temp
KLDVHCX		●		●				●			●		
KLDVHCX-LT		●		●				●	●		●		
KLDVX		●		●				●					⊙
KLDPX					●			●					
KLDX-PA						●	●	●					
KLDX-PA-LT						●	●	●	●				
KPJX	3, 4	●	●							●	●	⊙	⊙
KPJX-CM	3, 4					●				●	●		
KPJX-PM	3, 4			●	●					●	●	⊙	
KPPX	3, 4					●	●			●	●		

⊙ Contact Kycon for this option



KLDVHCX
2.0mm/2.5mm
Vertical 5A



KLDVHCX-LT
2.0mm/2.5mm
Locking Type 5A



KLDVX
2.0mm/2.5mm Vertical
Through Hole



KLDPX
2.0mm/2.5mm
Panel Mount



KLDX-PA
2.0mm/2.5mm
Power Plug



KLDX-PA-LT
2.0mm/2.5mm
Power Plug Locking Type



KPJX
Snap & Lock
Through Hole



KPJX-CM
Snap & Lock
Cable Mount Jack

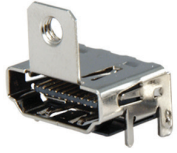


KPJX-PM
Snap & Lock
Panel Mount



KPPX
Snap & Lock
Cable Mount Plug

HDMI



KDMIX
with Flange &
Top Spring Tabs



KDMIX
without Flange
with Top Springs, SMT



KDMIX
Vertical



KDMI42X
Dual Stacked



KMDMIX
Mini



KMMDMIX
Micro



KDMIX-SL1
Upright

IP67



KUSB67X
USB Quick Release A-Type
Socket to Socket



KUSB67X
USB Quick Release A-Type
Socket to PCB



IP67X-PP-CAP
USB Quick Release CAP



KMMLSX
Fully Sealed Micro USB



STX-353E7D
Fully Sealed
3.5mm Audio Jack



GM67X-S-88
RJ45 Box Side Jack



GM67X-CS
RJ45 Cable Side



GM67X-CBL
RJ45 Box Side Jack
with Cable & Plug



GM67X-CAP
RJ45 CAP

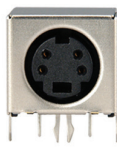
Circular Din/Mini Dins

	Contacts	Plug	Socket	Shielded	Non-Shielded	Right Angle	Vertical	Panel Mount	Cable Mount	Through Hole	SMT	Stacked	Snap & Lock	PC99	High Temp
KMDGX	3-10		●	●	●	●				●		⊙		⊙	⊙
KMDLAX	3-8	●							●				●	⊙	
KMDPLX	4 6, 8		●		●			●					●		
KMDTX	4, 6		●	●		●				●	●				●
KMDVLX	3-8		●		●		●			●			●	⊙	⊙

⊙ Contact Kycon for this option



KMDGX
Stacked Right Angle



KMDGX
Right Angle



KMDLAX
Cable Mount Plug
Snap & Lock



KMDPLX
Panel Mount
Snap & Lock



KMDTX
Slim Design SMT
& Through Hole



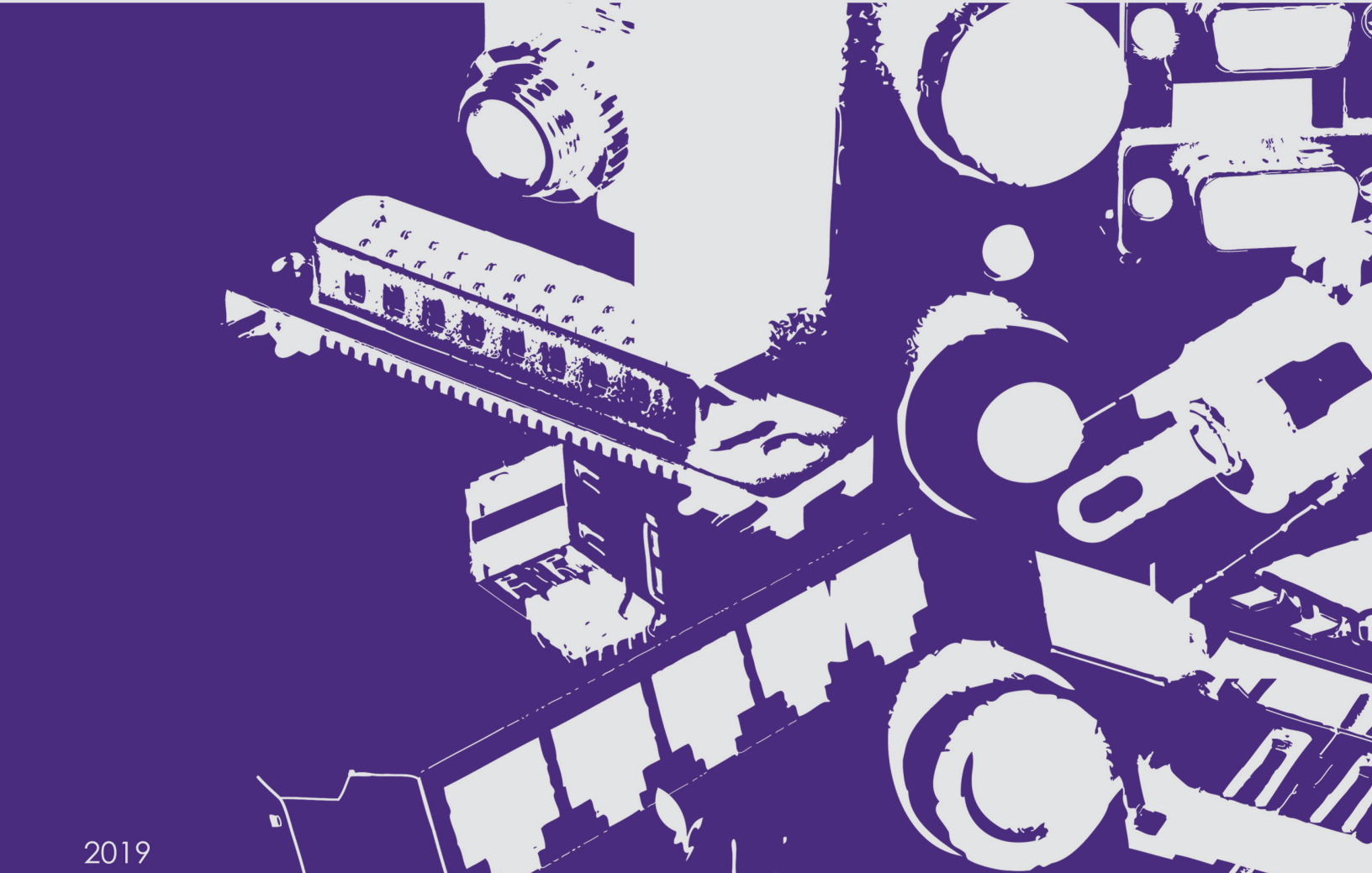
KMDVLX
Vertical Mount
Snap & Lock

Custom Cables



Kycon can engineer and manufacture a wide variety of custom cable assemblies and adapters. Kycon specializes in custom over-molded cable assemblies, phone cables, small wire harnesses, and custom adapters.

www.kycon.com



2019

X-ON Electronics

Largest Supplier of Electrical and Electronic Components

Click to view similar products for [Phone Connectors](#) category:

Click to view products by [Kycon](#) manufacturer:

Other Similar products are found below :

[M444B](#) [6J1041A](#) [R4F](#) [E12BPKG](#) [ECP4PKG](#) [161-3502L-E](#) [MT333X](#) [171-0350-EX](#) [171-101A-EX](#) [171-3325-EX](#) [176S](#) [NC3MG-V](#)
[NYS228G](#) [P10834](#) [P2380](#) [P2381X](#) [P2411X](#) [P2412](#) [P2724](#) [JM2PB-AU BULK](#) [9144](#) [S2674](#) [280L](#) [163-156N-2-E](#) [163-158N-2-E](#) [171-3308-](#)
[EX](#) [171-3500-E](#) [2501FT](#) [CMT335](#) [M10662](#) [330Q](#) [RJ5VI-S](#) [40116](#) [TM1R-AU](#) [TM2PBMJ-AU](#) [TM2PJ-AU](#) [TM2PJ-AU BULK](#) [4803.1351](#)
[49201](#) [49205](#) [TS3PBJ-AU](#) [TS3PBMJ-AU](#) [TT32BX](#) [54B](#) [40112](#) [40205](#) [XMT332B](#) [52170017-331](#) [570](#) [NM3](#)