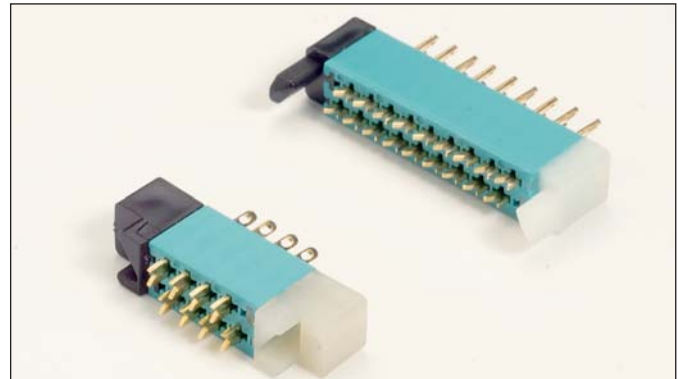


## Series 8218 – 0.050" Staggered Dual Row

### FEATURES

- High contact density
- For parallel or perpendicular p.c. card mounting
- High mounting density (.050" centers, minimum)
- Nylon end sections for mounting and card guidance
- Mounting hardware supplied with connector
- Mates with 8219 Series



### TECHNICAL SPECIFICATIONS

**Current Rating:**

5 amperes, maximum

**Contact Resistance:**

0.005 ohm, maximum

**Contact Material and Plating:**

Phosphor Bronze  
nickel plate, 30 to 50 microinches followed by  
gold plate, 10 to 20 microinches

**Insulator Material:**

Diallyl phthalate, glass-filled, flame resistant,  
end guides: nylon

**Insulation Resistance:**

5,000 megohms, minimum

**Dielectric Withstanding Voltage:**

Sea Level: 1000 Volts rms  
3.4" Hg: 500 Volts rms

**Insertion/Withdrawal Force:**

2 to 16 ounces per contact

### ORDERING CODE

**00**

**8218**

**076**

**000**

**001**

**Number of Contacts**

002 to 076 for connectors  
without center guide

**Contact Code**

**Variation Code**

001 = Receptacle  
002 = Plug-Card  
005 = Plug-Board

**with keying pins**

011 = Receptacle  
012 = Plug-Card/pin  
inserted in  
odd position  
013 = Plug-Card/pin  
inserted in even  
position  
017 = Plug-Board

**with keying holes**

021 = Receptacle  
022 = Plug-Card/pin  
inserted in  
odd position  
023 = Plug-Card/pin  
inserted in even  
position  
027 = Plug-Board

**Variant 002 right angled contacts**

000 = 60 8200 16 33 P.C. Tail

000 = 60 8200 16 63 P.C. Tail

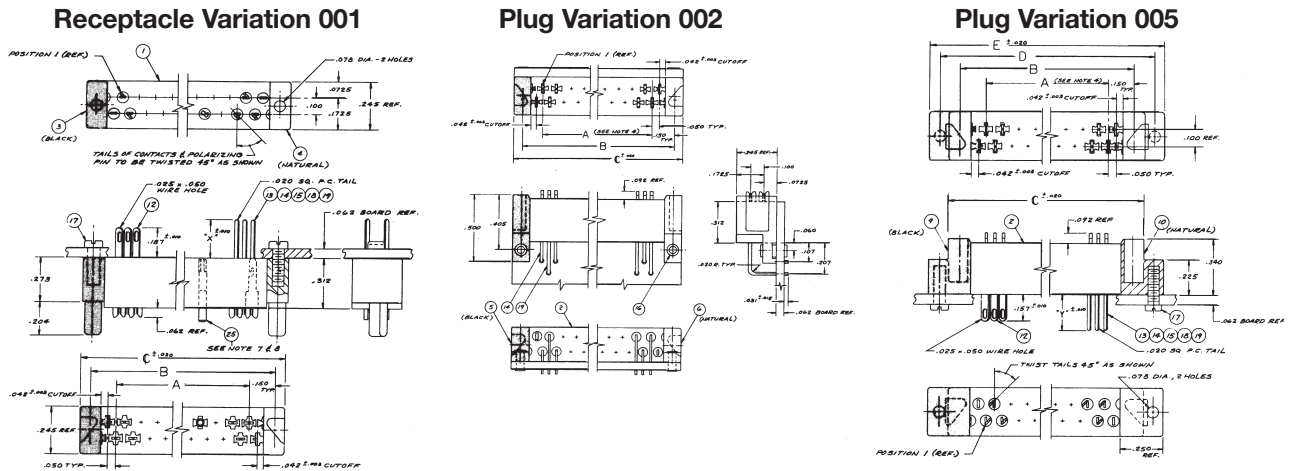
**Variants 001 and 005**

722 = 60 8200 16 13 Wire Hole Tail

736 = 60 8200 16 33 P.C. Tail (X = 9/32", Y = 1/4")

753 = 60 8200 16 53 P.C. Tail (X = 1/8", Y = 3/32")

771 = 60 8200 16 63 P.C. Tail (X = 31/64", Y = 29/64")



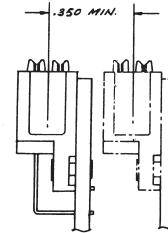
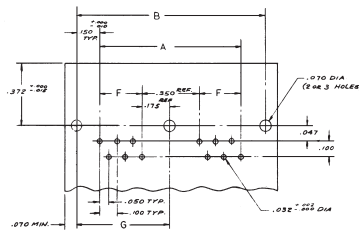
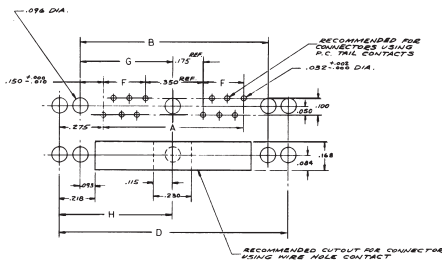
### RECEPTACLE 001 – MATES WITH PLUGS 002 AND 005

### MOUNTING LAYOUT

Variation 001 and 005

Variation 002

Minimum Center to Center Spacing for Adjustment Plugs



### DIMENSIONS

(inches)

A	B	C	D	E
(No. of contacts x 0.050") - 0.050"	"A" dimension + 0.300"	"A" dimension + 0.440"	"A" dimension + 0.550"	"A" dimension + 0.690"

### POLARIZATION

Keying Ordering No.  
60-8218-4715-00-152



Determine polarization pin location from views.

P = Specify location by contact # where polarizing pin must be inserted.

H = Specify location by contact # where contact must be omitted for mating.

Typical Example: 00-8218-024-721-001-P17 (polarizing pin mtd. in position 17)  
00-8218-024-721-005-H17 (polarizing hole is in position 17)

## X-ON Electronics

Largest Supplier of Electrical and Electronic Components

*Click to view similar products for [Rack & Panel Connectors](#) category:*

*Click to view products by [Kyocera AVX](#) manufacturer:*

Other Similar products are found below :

[00171410002](#) [00171420202](#) [00171440002](#) [02-014-013-5200-000](#) [613467-000](#) [CTJ112E01E-513](#) [CTJ116E03A-513](#) [66020-2](#) [CW8958-000](#)  
[699886-000](#) [D250-50632](#) [70.400.3240.0](#) [70.955.2453.3](#) [733753-000](#) [F22831-000](#) [780-522-DPX34RG8-02](#) [8660-501](#) [87.060.0053.0](#)  
[900709N001](#) [928358-1](#) [D-659-0061](#) [1-445717-6](#) [1484469-2](#) [1604997-2](#) [MTC100-BF1-P31CS015](#) [MTC100-KT2-0083](#) [MTC100-KT2-0123-](#)  
[003](#) [MTC100-YA1-005](#) [MTCQKT1R2PGCA](#) [MTCR-103-04S](#) [MTCX1X-100-100CS025](#) [1738331-1](#) [1757667-1](#) [1811481-1](#) [1883433-1](#)  
[201046-7](#) [202648-4](#) [213364-1](#) [226503-000](#) [937028-164](#) [1663130-2](#) [172305-4](#) [F36711-000](#) [202355-2](#) [202356-2](#) [G16S-A](#) [G20S-AB](#) [CHA-](#)  
[0017-003](#) [CHA-0296](#) [354654-000](#)