

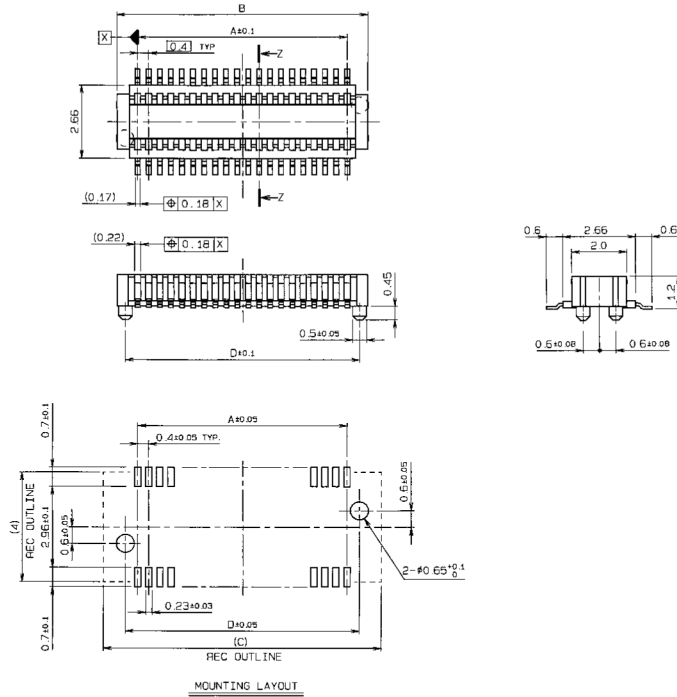
0.4mm Pitch

SERIES

5602

0.4mmピッチ BtoB SMT H=1.5mm 金具無しタイプ コネクタ
0.4mmPitch BtoB SMT H=1.5mm without ANCHOR PLATE Type

● PLUG



No. of POS.	A	B	C	D
20	3.6	5.1	6.1	4.5
24	4.4	5.9	6.9	5.3
30	5.6	7.1	8.1	6.5
34	6.4	7.9	8.9	7.3
40	7.6	9.1	10.1	8.5
50	9.6	11.1	12.1	10.5
60	11.6	13.1	14.1	12.5
70	13.6	15.1	16.1	14.5
80	15.6	17.1	18.1	16.5

注文コード/Ordering Code

Part No. 14 5602 xxx 00x 829

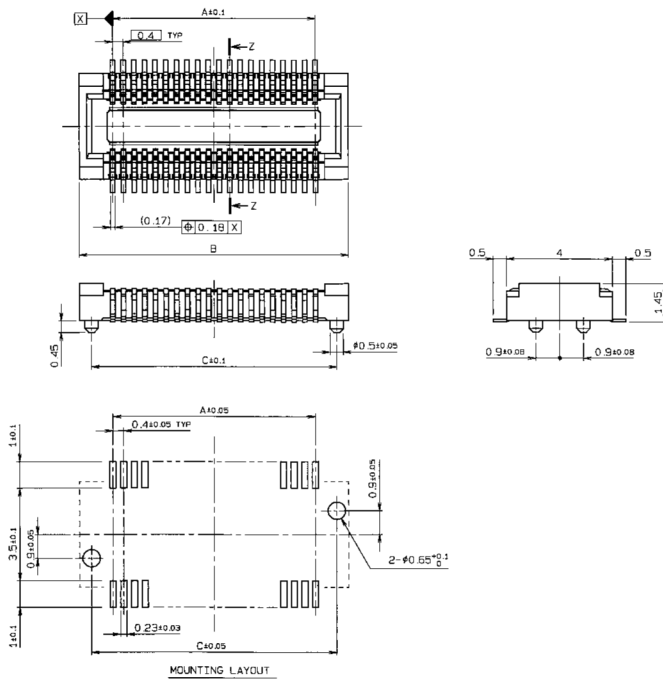
極数 NUMBER OF CONTACTS

VARIATION CODE

0;金具無しボス無し WITHOUT ANCHOR PLATE AND BOSS

1;金具無しボス有り WITHOUT ANCHOR PLATE AND WITH BOSS

● RECEPTACLE



No. of POS.	A	B	C
20	3.6	6.1	5.2
24	4.4	6.9	6.0
30	5.6	8.1	7.2
34	6.4	8.9	8.0
40	7.6	10.1	9.2
50	9.6	12.1	11.2
60	11.6	14.1	13.2
70	13.6	16.1	15.2
80	15.6	18.1	17.2

注文コード/Ordering Code

Part No. 24 5602 xxx 00x 829

極数 NUMBER OF CONTACTS

VARIATION CODE

0;金具無しボス無し WITHOUT ANCHOR PLATE AND BOSS

1;金具無しボス有り WITHOUT ANCHOR PLATE AND WITH BOSS

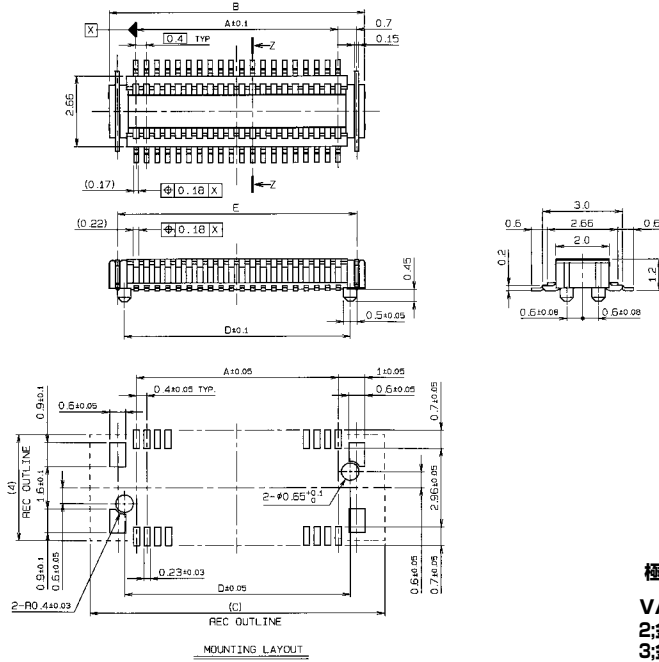
0.4mm Pitch

SERIES

5602

0.4mmピッチ BtoB SMT H=1.5mm 金具付きタイプ コネクタ
0.4mmPitch BtoB SMT H=1.5mm with ANCHOR PLATE Type

● PLUG



No. of POS.	A	B	C	D	E
20	3.6	5.6	7.1	4.5	5.0
24	4.4	6.4	7.9	5.3	5.8
30	5.6	7.6	9.1	6.5	7.0
34	6.4	8.4	9.9	7.3	7.8
40	7.6	9.6	11.1	8.5	9.0
50	9.6	11.6	13.1	10.5	11.0
60	11.6	13.6	15.1	12.5	13.0
70	13.6	15.6	17.1	14.5	15.0
80	15.6	17.6	19.1	16.5	17.0

注文コード/Ordering Code

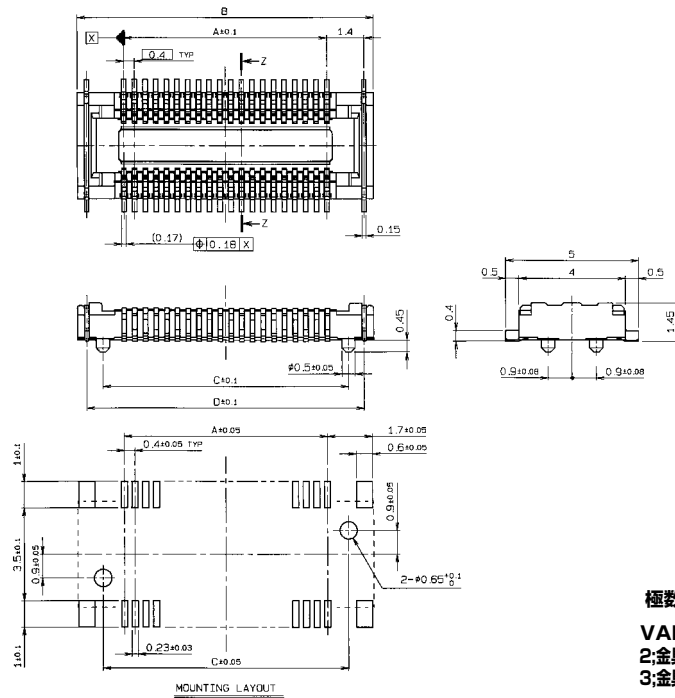
Part No. 14 5602 xxx 00x 829

極数 NUMBER OF CONTACTS

VARIATION CODE

2:金具有りボス無し WITH ANCHOR PLATE AND WITHOUT BOSS
3:金具有りボス有り WITH ANCHOR PLATE AND BOSS

● RECEPTACLE



No. of POS.	A	B	C	D
20	3.6	7.1	5.2	6.4
24	4.4	7.9	6.0	7.2
30	5.6	9.1	7.2	8.4
34	6.4	9.9	8.0	9.2
40	7.6	11.1	9.2	10.4
50	9.6	13.1	11.2	12.4
60	11.6	15.1	13.2	14.4
70	13.6	17.1	15.2	16.4
80	15.6	19.1	17.2	18.4

注文コード/Ordering Code

Part No. 24 5602 xxx 00x 829

極数 NUMBER OF CONTACTS

VARIATION CODE

2:金具有りボス無し WITH ANCHOR PLATE AND WITHOUT BOSS
3:金具有りボス有り WITH ANCHOR PLATE AND BOSS

0.4mm Pitch

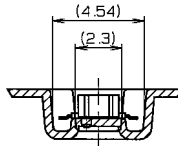
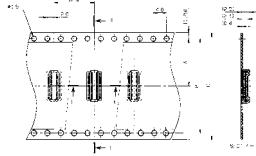
SERIES

5602

0.4mmピッチ BtoB SMT H=1.5mm コネクタ エンボス梱包
0.4mmPitch BtoB SMT H=1.5mm Tape and Reel Package

● PLUG

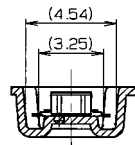
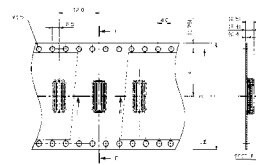
金具無し WITHOUT ANCHOR PLATE



SECT. E-E (S=5/1)

寸法表 DIMENSION				
極数 NO. OF POS.	A	B	C	D
20	11.5	-	24	30.4
24	11.5	-	24	30.4
30	11.5	-	24	30.4
34	11.5	-	24	30.4
40	11.5	-	24	30.4
50	14.2	28.4	32	38.4
60	14.2	28.4	32	38.4
70	14.2	28.4	32	38.4
80	14.2	28.4	32	38.4

金具有り WITH ANCHOR PLATE



SECT. E-E (S=5/1)

寸法表 DIMENSION				
極数 NO. OF POS.	A	B	C	D
20	11.5	-	24	30.4
24	11.5	-	24	30.4
30	11.5	-	24	30.4
34	11.5	-	24	30.4
40	11.5	-	24	30.4
50	14.2	28.4	32	38.4
60	14.2	28.4	32	38.4
70	14.2	28.4	32	38.4
80	14.2	28.4	32	38.4

注文コード/Ordering Code

Part No. 14 5602 xxx 00x 829

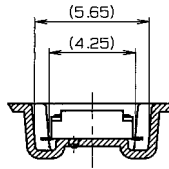
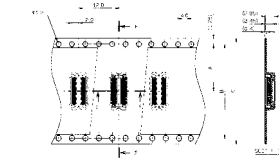
極数 NUMBER OF CONTACTS

VARIATION CODE

- 0:金具無しボス無し WITHOUT ANCHOR PLATE AND WITHOUT BOSS
- 1:金具無しボス有り WITHOUT ANCHOR PLATE AND BOSS
- 2:金具有りボス無し WITH ANCHOR PLATE AND WITHOUT BOSS
- 3:金具有りボス有り WITH ANCHOR PLATE AND BOSS

● RECEPTACLE

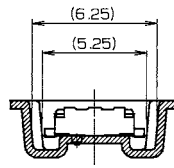
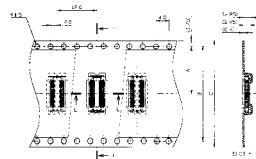
金具無し WITHOUT ANCHOR PLATE



SECT. E-E (S=5/1)

寸法表 DIMENSION				
極数 NO. OF POS.	A	B	C	D
20	11.5	-	24	30.4
24	11.5	-	24	30.4
30	11.5	-	24	30.4
34	11.5	-	24	30.4
40	11.5	-	24	30.4
50	14.2	28.4	32	38.4
60	14.2	28.4	32	38.4
70	14.2	28.4	32	38.4
80	14.2	28.4	32	38.4

金具有り WITH ANCHOR PLATE



SECT. E-E (S=5/1)

寸法表 DIMENSION				
極数 NO. OF POS.	A	B	C	D
20	11.5	-	24	30.4
24	11.5	-	24	30.4
30	11.5	-	24	30.4
34	11.5	-	24	30.4
40	11.5	-	24	30.4
50	14.2	28.4	32	38.4
60	14.2	28.4	32	38.4
70	14.2	28.4	32	38.4
80	14.2	28.4	32	38.4

注文コード/Ordering Code

Part No. 24 5602 xxx 00x 829

極数 NUMBER OF CONTACTS

VARIATION CODE

- 0:金具無しボス無し WITHOUT ANCHOR PLATE AND WITHOUT BOSS
- 1:金具無しボス有り WITHOUT ANCHOR PLATE AND BOSS
- 2:金具有りボス無し WITH ANCHOR PLATE AND WITHOUT BOSS
- 3:金具有りボス有り WITH ANCHOR PLATE AND BOSS

X-ON Electronics

Largest Supplier of Electrical and Electronic Components

Click to view similar products for [Board to Board & Mezzanine Connectors](#) category:

Click to view products by [Kyocera AVX](#) manufacturer:

Other Similar products are found below :

[589158040000018](#) [MDF7C-18P-2.54DSA\(55\)](#) [FCN-230C068-11](#) [FCN-268F012-G/BD](#) [FCN-268F036-G/BD](#) [FCN-268M012-G/0D](#) [FCN-268M024-G/1D](#) [FCN-723J004/1](#) [MIS-048-01-F-D-DP-K](#) [832-10-034-10-001000](#) [FX4C-80S-1.27DSA](#) [FCN-214Q030-G/0](#) [FCN-234P048-G/0](#) [FCN-235D050-G/C](#) [210-93-314-41-105000](#) [2-22603-0](#) [MDF7-40DP-2.54DSA\(55\)](#) [AXG720047](#) [5031084030](#) [MIT-114-03-F-D-K](#) [55323-1519](#) [DF33-2P-3.3DSA\(24\)](#) [YFT-20-05-H-03-SB-K](#) [503308-3040](#) [026-6203-PDB](#) [027-6203-PDB](#) [069159702701000](#) [10123981-102LF](#) [101A10019X](#) [55650-0588-C](#) [68684-306](#) [75140-7012](#) [589159005003045](#) [063209](#) [194261-1](#) [FCN-268F024-G0D](#) [10124054-515LF](#) [68685-603](#) [8-1616154-3](#) [MIS-019-01-F-D](#) [589159005002045](#) [541371078](#) [IL-WX-10PB-HF-B-E1000E](#) [FCN-268M024-G/3D](#) [20021832-06016C1LF](#) [KX15-20KLDL-E1000E](#) [MDF7-16DP-2.54DSA\(55\)](#) [AXE810124](#) [FCN-214J100-G/0](#) [FCN-230C068-E/S](#)