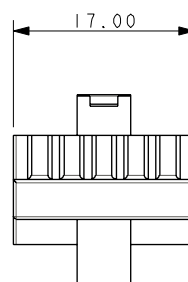
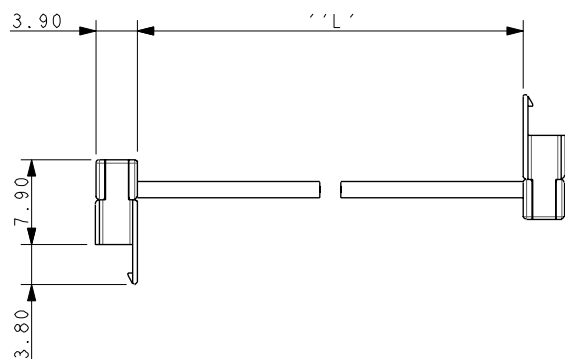
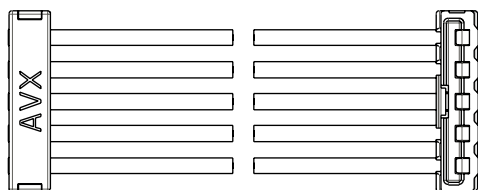


A

B

C

D



PART NUMBER	LENGTH 'L'	WIRE COLOUR
58-9159-005-001-045	63.5±5.0	RED
58-9159-005-002-045	127.0±5.0	GREEN
58-9159-005-003-045	215.9±10.0	BLUE
58-9159-005-004-045	292.1±10.0	YELLOW
58-9159-005-005-045	50.8±5.0	ORANGE
58-9159-005-006-045	114.3±5.0	WHITE
58-9159-005-007-045	203.2±10.0	BLACK
58-9159-005-008-045	355.6±10.0	BROWN
58-9159-005-009-045	457.2±15.0	PURPLE

## NOTES :-

- 9159 IDC SOCKET (DOWN) TO 9159 IDC SOCKET (UP), LATCH AND WIRE ON THE SAME SIDE.
- CONNECTOR COLOUR WHITE, WIRE STOP CAP USED.
- 5 WIRES 22AWG, ULI429, 19X32AWG CONDUCTOR, COLOUR AS IN TABLE.
- CABLE ASSEMBLY LENGTH AS IN TABLE.
- CABLE ASSEMBLIES SUPPLIED IN BAGS OF 100.
- GENERAL TOLERANCE  $\pm 0.20$  UNLESS SPECIFIED IN TABLE.



A

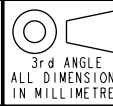
B

C

D

FORM-106-01-056-2S ISS-8

Release No.  
History  
103023  
22.08.2013  
28.08.2013  
24.10.2013



3rd ANGLE  
ALL DIMENSIONS  
IN MILLIMETRES



Drawn  
N.C.H.  
Size  
BV

Part Number REFER TO TABLE	
Description 9159 CABLE ASSEMBLY - 5 WAY	DATE 22-Aug-13
Drawing Number 58-9159-005-0XX-045S	Issue C

## X-ON Electronics

Largest Supplier of Electrical and Electronic Components

*Click to view similar products for [Board to Board & Mezzanine Connectors](#) category:*

*Click to view products by [Kyocera AVX](#) manufacturer:*

Other Similar products are found below :

[589158040000018](#) [MDF7C-18P-2.54DSA\(55\)](#) [FCN-230C068-11](#) [FCN-268F012-G/BD](#) [FCN-268F036-G/BD](#) [FCN-268M012-G/0D](#) [FCN-268M024-G/1D](#) [FCN-723J004/1](#) [MIS-048-01-F-D-DP-K](#) [832-10-034-10-001000](#) [FX4C-80S-1.27DSA](#) [FCN-214Q030-G/0](#) [FCN-234P048-G/0](#) [FCN-235D050-G/C](#) [210-93-314-41-105000](#) [2-22603-0](#) [MDF7-40DP-2.54DSA\(55\)](#) [AXG720047](#) [5031084030](#) [MIT-114-03-F-D-K](#) [55323-1519](#) [DF33-2P-3.3DSA\(24\)](#) [YFT-20-05-H-03-SB-K](#) [503308-3040](#) [026-6203-PDB](#) [027-6203-PDB](#) [069159702701000](#) [10123981-102LF](#) [101A10019X](#) [55650-0588-C](#) [68682-310LF](#) [68684-306](#) [75140-7012](#) [87471-650](#) [194261-1](#) [FCN-268F024-G0D](#) [10124054-515LF](#) [68685-603](#) [8-1616154-3](#) [MIS-019-01-F-D](#) [FCN-268M024-G/3D](#) [20021832-06016C1LF](#) [KX15-20KLDL-E1000E](#) [MDF7-16DP-2.54DSA\(55\)](#) [AXE810124](#) [FCN-214J100-G/0](#) [FCN-230C068-E/S](#) [AXE812124](#) [AXE816124](#) [AXE720127](#)