

# Part No. 9001118

## V2X Ceramic Patch Antenna

### 5.9 GHz DSRC Band

Supports: V2V/V2I/V2P Applications, Automotive, Vehicle Safety Applications, Intelligent Transportation System



### V2X Ceramic Patch Antenna

US – Band 5850 – 5925 MHz  
EU – Band 5870 – 5905 MHz

#### KEY BENEFITS

##### Reduced Costs and Time-to-Market

Standard antenna eliminates design fees and cycle time associated with a custom solution; getting products to market faster.

##### Greater Flexibility with Unique Form Factors

Ethertronics' technology helps you deliver more advanced ergonomic designs without adverse impact on product performance.

##### RoHS Compliant

Products are the latest RoHS version compliant.

#### APPLICATIONS

- Vehicle Safety Applications
- Automotive
- Connected car application
- safety driving support
- Embedded system

Ethertronics family of ceramic patch antennas are designed to offer the best performances for a wide range of applications. The 9001118 antenna is specifically designed for Dedicated Short Range Communication systems. This high performance antenna is perfect for V2X applications to provide the high-secure and high-speed wireless communication between vehicle and Infrastructure

#### Global Operations & Design Support

Ethertronics' global operations support an integrated network of design centers that can take projects from concept to production.

#### Electrical Specifications

Typical performance measured with 70 x 70 mm PCB

Frequency (GHZ)	5.850 – 5.925
Gain 0° xz plane	4 dB
Average Efficiency	55 %
Return Loss	< -15 dB
Polarization	R.H.C.P
Impedance	50 ohm

#### Mechanical Specifications & Ordering Part Number

Ordering Part Number	9001118
Dimensions (mm)	13.00 ± 0.20 length 13.00 ± 0.20 width 4.00± 0.20 thickness
Mounting	Adhesive 3M (11x11x0.05) 1 trough-hole Soldered Pin
Weight (grams)	12
Operating Temperature (°C )	-40 to +70



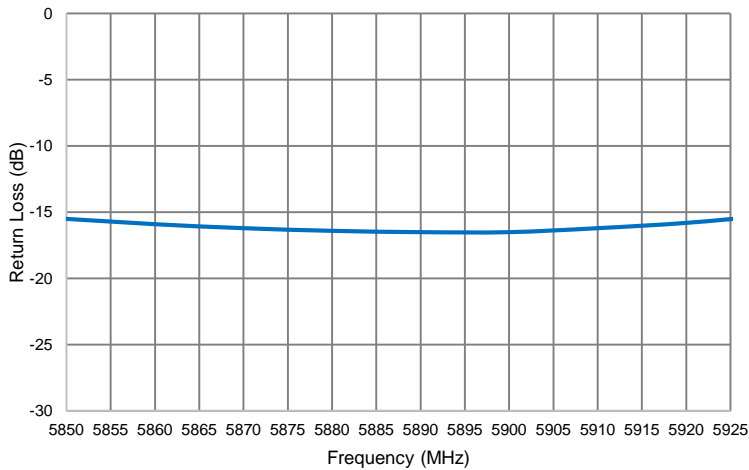
### 5.9 GHz DSRC Ceramic Patch Antenna Specifications

Ethertronics produces a wide variety of standard and custom antennas to meet user needs

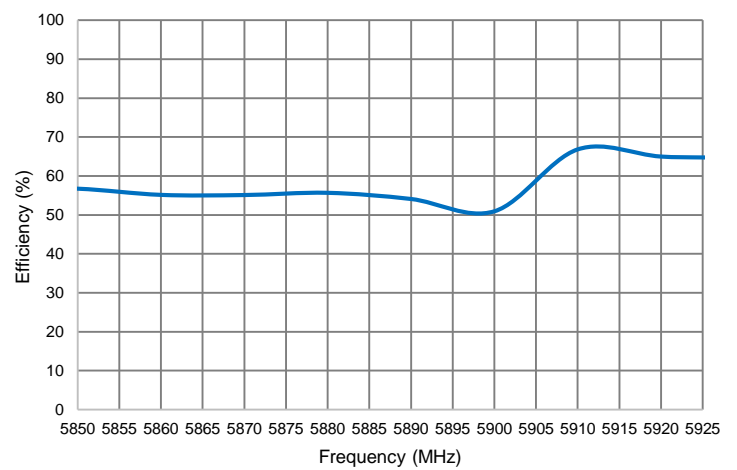
#### Return Loss, Efficiency, Peak Gain and RHCP Gain Plots

Typical performance measured with 70 x 70 mm PCB

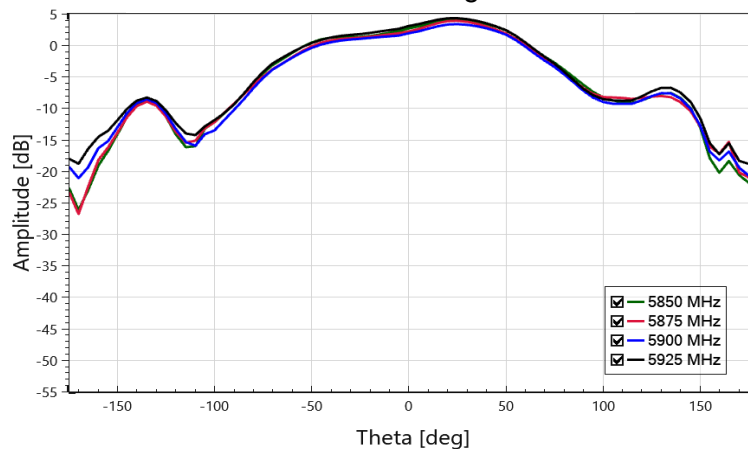
#### Return Loss



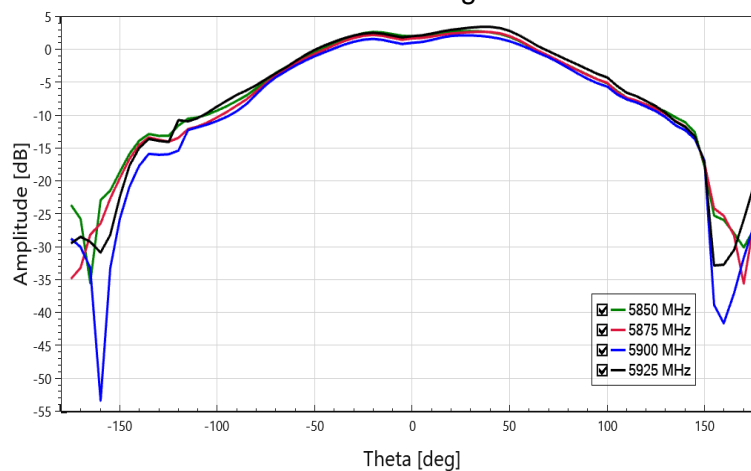
#### Efficiency



#### RHCP Gain Phi = 90 deg YZ Plane



#### RHCP Gain Phi = 0 deg XZ Plane



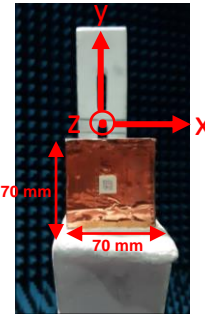
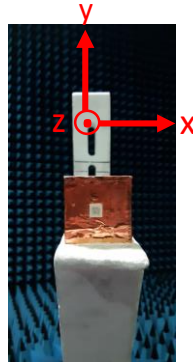


**5.9 GHz DSRC Ceramic Patch Antenna Specifications**

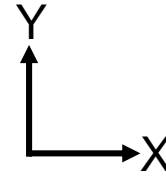
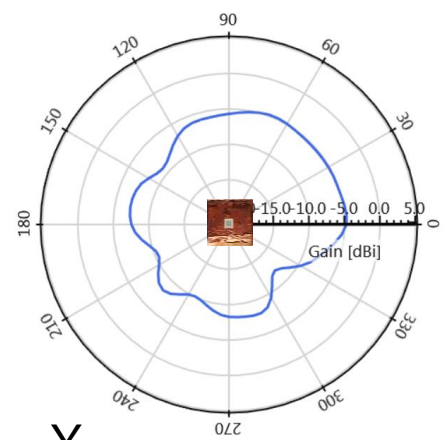
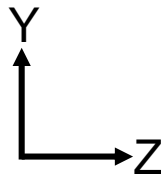
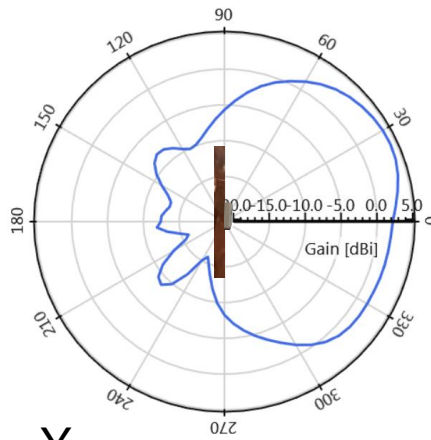
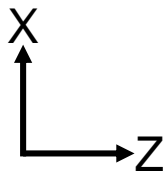
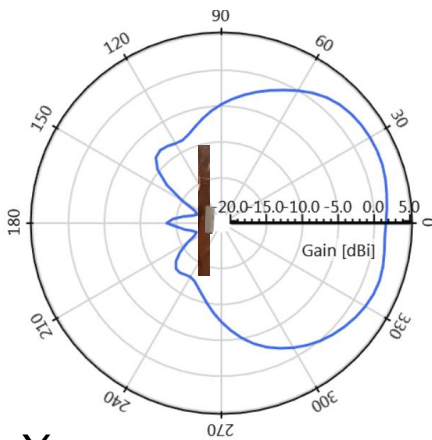
Ethertronics produces a wide variety of standard and custom antennas to meet user needs

**Antenna Radiation Patterns and Axial Ratio**

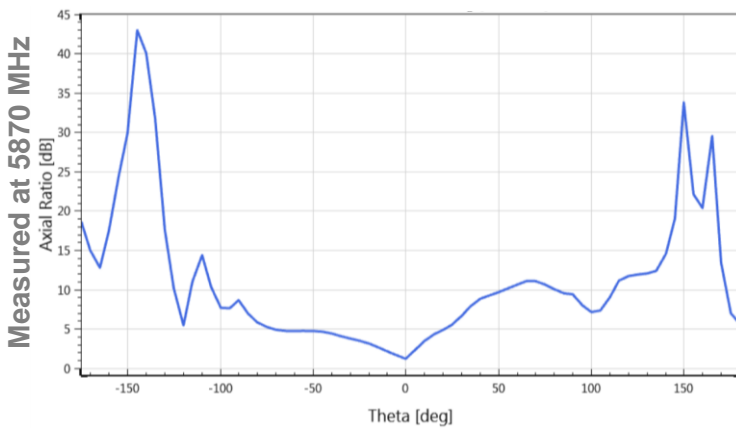
Typical performance measured with 70 x 70 mm PCB  
Measured at 5870



Measured at 5870 MHz



Phi=90°



Phi=0°





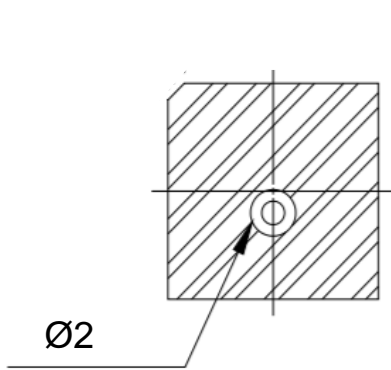
5.9 GHz DSRC Ceramic Patch Antenna Specifications

Ethertronics produces a wide variety of standard and custom antennas to meet user needs

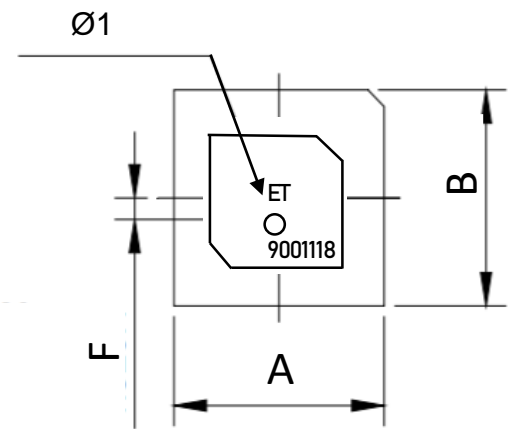
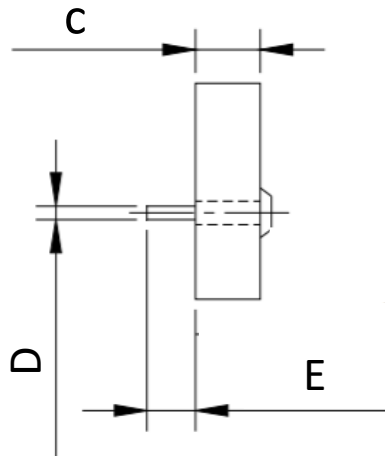
**Mechanical Dimensions**

Typical antenna dimensions (mm)

Part Number	A (mm)	B (mm)	C(mm)	Ø1 (mm)	D (mm)	E(mm)	F (mm)	Ø2 (mm)
9001118	13.00 ± 0.20	13.00 ± 0.20	4.00 ± 0.20	1.42 ± 0.10	0.81 ± 0.03	3.00 ± 0.30	1.30 ± 0.10	2.80 ± 0.20



Bottom -View-



Top -View-

## X-ON Electronics

Largest Supplier of Electrical and Electronic Components

*Click to view similar products for [Antennas](#) category:*

*Click to view products by [Kyocera AVX](#) manufacturer:*

Other Similar products are found below :

[GAN30084EU](#) [930-033-R](#) [GW17.07.0250E](#) [1513563-1](#) [EXE902SM](#) [APAMPG-117](#) [MAF94383](#) [W3908B0100](#) [W6102B0100](#) [YE572113-30RSMM](#) [108-00014-50](#) [66089-2406](#) [SPDA17RP918](#) [A09-F8NF-M](#) [A09-F5NF-M](#) [RGFRA1903041A1T](#) [W3593B0100](#) [W3921B0100](#) [SIMNA-868](#) [SIMNA-915](#) [SIMNA-433](#) [W1044](#) [W1049B090](#) [A75-001](#) [WTL2449CQ1-FRSMM](#) [CPL9C](#) [EXB148BN](#) [0600-00060](#) [TRA9020S3PBN-001](#) [Y4503](#) [GD5W-28P-NF](#) [MA9-7N](#) [GD53-25](#) [GD5W-21P-NF](#) [C37](#) [MAF94051](#) [MA9-5N](#) [EXD420PL](#) [B1322NR](#) [QWFTB120](#) [MAF94271](#) [MAF94300](#) [GPSMB301](#) [FG4403](#) [AO-AGSM-OM54](#) [5200232](#) [MIKROE-2349](#) [WCM.01.0111](#) [MIKROE-2393](#) [MIKROE-2352](#)