

TAJ Series

Standard Tantalum

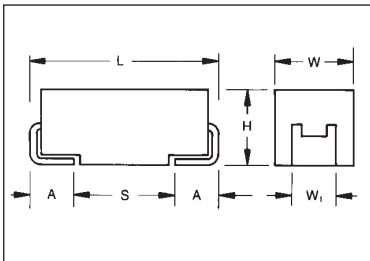


- Generic SMT chip tantalum series
- 5 key case sizes available
- Low profile options available



LEAD-FREE COMPATIBLE COMPONENT

CASE DIMENSIONS: millimeters (inches)



For part marking see page 123

Code	EIA Code	L±0.20 (0.008)	W+0.20 (0.008) -0.10 (0.004)	H+0.20 (0.008) -0.10 (0.004)	W ₁ ±0.20 (0.008)	A+0.30 (0.012) -0.20 (0.008)	S Min.
A	3216-18	3.20 (0.126)	1.60 (0.063)	1.60 (0.063)	1.20 (0.047)	0.80 (0.031)	1.10 (0.043)
B	3528-21	3.50 (0.138)	2.80 (0.110)	1.90 (0.075)	2.20 (0.087)	0.80 (0.031)	1.40 (0.055)
C	6032-28	6.00 (0.236)	3.20 (0.126)	2.60 (0.102)	2.20 (0.087)	1.30 (0.051)	2.90 (0.114)
D	7343-31	7.30 (0.287)	4.30 (0.169)	2.90 (0.114)	2.40 (0.094)	1.30 (0.051)	4.40 (0.173)
E	7343-43	7.30 (0.287)	4.30 (0.169)	4.10 (0.162)	2.40 (0.094)	1.30 (0.051)	4.40 (0.173)
V	7361-38	7.30 (0.287)	6.10 (0.240)	3.45±0.30 (0.136±0.012)	3.10 (0.120)	1.40 (0.055)	4.40 (0.173)

W₁ dimension applies to the termination width for A dimensional area only.

HOW TO ORDER

TAJ	C	106	M	035	R	NJ	—
Type	Case Size See table above	Capacitance Code pF code: 1st two digits represent significant figures 3rd digit represents multiplier (number of zeros to follow)	Tolerance K=±10% M=±20%	Rated DC Voltage 002=2.5Vdc 004=4Vdc 006=6.3Vdc 010=10Vdc 016=16Vdc 020=20Vdc 025=25Vdc 035=35Vdc 050=50Vdc	Packaging R = 7" T/R (Lead Free since production date 1/1/04) S = 13" T/R (Lead Free since production date 1/1/04) A = Gold Plating 7" Reel B = Gold Plating 13" Reel H = Tin Lead 7" Reel K = Tin Lead 13" Reel	Specification Suffix NJ = Standard Suffix	Additional characters may be added for special requirements V = Dry pack Option (selected codes only)

TECHNICAL SPECIFICATIONS

Technical Data:	All technical data relate to an ambient temperature of +25°C									
Capacitance Range:	0.1 µF to 2200 µF									
Capacitance Tolerance:	±10%; ±20%									
Rated Voltage (V _R)	≤ +85°C:	2.5	4	6.3	10	16	20	25	35	50
Category Voltage (V _C)	≤ +125°C:	1.7	2.7	4	7	10	13	17	23	33
Surge Voltage (V _S)	≤ +85°C:	3.3	5.2	8	13	20	26	32	46	65
Surge Voltage (V _S)	≤ +125°C:	2.2	3.4	5	8	13	16	20	28	40
Temperature Range:	-55°C to +125°C									
Reliability:	1% per 1000 hours at 85°C, V _R with 0.1Ω/V series impedance, 60% confidence level									
Qualification:	CECC 30801 - 005 issue 2 EIA 535BAAC									
Termination Finished:	Sn Plating (standard), Gold and SnPb Plating upon request Meets requirements of AEC-Q200									



CAPACITANCE AND RATED VOLTAGE, V_R (VOLTAGE CODE) RANGE (LETTER DENOTES CASE SIZE)

Capacitance		Rated voltage DC (V_R) to 85°C								
μF	Code	2.5V (e)	4V (G)	6.3V (J)	10V (A)	16V (C)	20V (D)	25V (E)	35V (V)	50V (T)
0.10	104								A	A
0.15	154								A	A/B
0.22	224								A	A/B
0.33	334								A	B
0.47	474							A	A/B	A/B/C
0.68	684						A	A	A/B	A/B/C
1.0	105					A	A	A	A/B	A ^(M) /B/C
1.5	155				A	A	A	A/B	A/B/C	C/D
2.2	225			A	A	A/B	A/B	A/B	A/B/C	C/D
3.3	335			A	A	A/B	A/B	A/B/C	B/C	C/D
4.7	475		A	A	A/B	A/B	A/B/C	A/B/C	B/C/D	C/D
6.8	685		A	A/B	A/B	A/B/C	A/B/C	B/C	C/D	C/D
10	106		A	A/B	A/B/C	A/B/C	B/C	B/C/D	C/D/E	D/E/V
15	156		A/B	A/B	A/B/C	A ^(M) /B/C	B/C/D	C/D	C/D	D/E/V
22	226		A	A/B/C	A/B/C	B/C/D	B/C/D	C/D	D/E	V
33	336	A	A/B	A/B/C	A/B/C/D	B/C/D	C/D	D/E	D/E/V	
47	476	A	A/B	A/B/C/D	B/C/D	C/D	C/D/E	D/E	E/V	
68	686	A	A/B/C	B/C/D	B/C/D	C/D	C*/D/E	E/V	V ^(M)	
100	107	A/B	A/B/C	B/C/D	B ^(M) /C/D/E	C/D/E	D/E/V	E ^(M) /V		
150	157	B	B/C	B ^(M) /C/D	C/D/E	D/E/V	E/V	V*		
220	227	B/D	B ^(M) /C/D	C/D/E	C/D/E	E/V				
330	337	D	C/D/E	C/D/E	D/E/V	V				
470	477	C/D	C/D/E	D/E/V	E/V					
680	687	C/D/E	D/E	E/V						
1000	108	D ^(M) /E	D/E/V	V ^(M)						
1500	158	D/E/V	E/V ^(M)							
2200	228	V ^(M)								

Non preferred Ratings - not recommended for new designs, higher voltage or smaller case size substitution are offered.

Engineering samples - please contact manufacturer

*Codes under development - subject to change.

Released codes ^(M tolerance only)

Note: Voltage ratings are minimum values. AVX reserves the right to supply higher ratings in the same case size, to the same reliability standards.

RATINGS & PART NUMBER REFERENCE

AVX Part No.	Case Size	Cap (µF)	Rated Voltage (V)	DCL (µA) Max.	DF % Max.	ESR Max. (Ω) @100kHz
TAJA476*002#NJ	A	47	2.5	0.9	6	3
TAJA686*002#NJ	A	68	2.5	1.4	8	1.5
TAJA107*002#NJ	A	100	2.5	2.5	30	1.4
TAJB107*002#NJ	B	100	2.5	2.5	8	1.4
TAJB157*002#NJ	B	150	2.5	3	10	1.6
TAJB227*002#NJ	B	220	2.5	4.4	16	1.6
TAJD227*002#NJ	D	220	2.5	5.5	8	0.3
TAJD337*002#NJ	D	330	2.5	8.2	8	0.3
TAJC477*002#NJ	C	470	2.5	9.4	12	0.2
TAJD477*002#NJ	D	470	2.5	11.6	8	0.2
TAJC687*002#NJ	C	680	2.5	17.0	18	0.2
TAJD687*002#NJ	D	680	2.5	17	16	0.2
TAJE687*002#NJ	E	680	2.5	17	10	0.2
TAJD108M002#NJ	D	1000	2.5	25	20	0.2
TAJE108*002#NJ	E	1000	2.5	20	14	0.4
TAJD158*002#NJ	D	1500	2.5	37.5	60	0.2
TAJE158*002#NJ	E	1500	2.5	37	20	0.2
TAJV158*002#NJ	V	1500	2.5	30	20	0.2
TAJV228*002#NJ	V	2200	2.5	55	50	0.2
TAJA336*004#NJ	A	33	4	1.3	6	3
TAJA476*004#NJ	A	47	4	1.9	8	2.6
TAJA686*004#NJ	A	68	4	2.7	10	1.5
TAJB686*004#NJ	B	68	4	2.7	6	1.8
TAJA107*004#NJ	A	100	4	4	30	1.4
TAJB107*004#NJ	B	100	4	4	8	0.9
TAJB157*004#NJ	B	150	4	6	10	1.5
TAJC157*004#NJ	C	150	4	6	6	0.3
TAJB227M004#NJ	B	220	4	8.8	12	1.1
TAJC227*004#NJ	C	220	4	8.8	8	1.2
TAJD227*004#NJ	D	220	4	8.8	8	0.9
TAJC337*004#NJ	C	330	4	13.2	8	0.9
TAJD337*004#NJ	D	330	4	13.2	8	0.9
TAJC477*004#NJ	C	470	4	18.8	14	0.3
TAJD477*004#NJ	D	470	4	18.8	12	0.9
TAJE477*004#NJ	E	470	4	18.8	10	0.5
TAJD687*004#NJ	D	680	4	27.2	14	0.5
TAJE687*004#NJ	E	680	4	27.2	14	0.9
TAJD108*004#NJ	D	1000	4	40	60	0.2
TAJE108*004#NJ	E	1000	4	40	14	0.4
TAJV108*004#NJ	V	1000	4	40	16	0.4
TAJE158*004#NJ	E	1500	4	60	30	0.2
TAJV158M004#NJ	V	1500	4	60	30	0.2
TAJA106*006#NJ	A	10	6.3	0.6	6	4
TAJA156*006#NJ	A	15	6.3	0.9	6	3.5
TAJA226*006#NJ	A	22	6.3	1.4	6	3
TAJA336*006#NJ	A	33	6.3	2.1	8	2.5
TAJA476*006#NJ	A	47	6.3	2.8	10	1.6
TAJB476*006#NJ	B	47	6.3	3	6	2
TAJC476*006#NJ	C	47	6.3	3	6	1.6
TAJB686*006#NJ	B	68	6.3	4	8	0.9
TAJC686*006#NJ	C	68	6.3	4.3	6	1.5
TAJB107*006#NJ	B	100	6.3	6.3	10	1.7
TAJC107*006#NJ	C	100	6.3	6.3	6	0.9
TAJB157M006#NJ	B	150	6.3	9.5	10	1.2
TAJC157*006#NJ	C	150	6.3	9.5	6	1.3
TAJD157*006#NJ	D	150	6.3	9.5	6	0.9
TAJC227*006#NJ	C	220	6.3	13.9	8	1.2
TAJD227*006#NJ	D	220	6.3	13.9	8	0.9
TAJE227*006#NJ	E	220	6.3	13.9	8	0.9

AVX Part No.	Case Size	Cap (µF)	Rated Voltage (V)	DCL (µA) Max.	DF % Max.	ESR Max. (Ω) @100kHz
TAJC337*006#NJ	C	330	6.3	19.8	12	0.5
TAJD337*006#NJ	D	330	6.3	20.8	8	0.9
TAJE337*006#NJ	E	330	6.3	20.8	8	0.9
TAJD477*006#NJ	D	470	6.3	28	12	0.4
TAJE477*006#NJ	E	470	6.3	28	10	0.4
TAJV477*006#NJ	V	470	6.3	28	10	0.4
TAJE687*006#NJ	E	680	6.3	42.8	10	0.5
TAJV687*006#NJ	V	680	6.3	42.8	10	0.5
TAJV108M006#NJ	V	1000	6.3	63	16	0.4
TAJA475*010#NJ	A	4.7	10	0.5	6	5
TAJA685*010#NJ	A	6.8	10	0.7	6	4
TAJA106*010#NJ	A	10	10	1	6	3
TAJA156*010#NJ	A	15	10	1.5	6	3.2
TAJB156*010#NJ	B	15	10	1.5	6	2.8
TAJA226*010#NJ	A	22	10	2.2	8	3
TAJB226*010#NJ	B	22	10	2.2	6	2.4
TAJA336*010#NJ	A	33	10	3.3	8	1.7
TAJB336*010#NJ	B	33	10	3.3	6	1.8
TAJC336*010#NJ	C	33	10	3.3	6	1.6
TAJB476*010#NJ	B	47	10	4.7	8	1
TAJC476*010#NJ	C	47	10	4.7	6	1.2
TAJB686*010#NJ	B	68	10	6.8	6	1.4
TAJC686*010#NJ	C	68	10	6.8	6	1.3
TAJB107M010#NJ	B	100	10	10	8	1.4
TAJC107*010#NJ	C	100	10	10	8	1.2
TAJD107*010#NJ	D	100	10	10	6	0.7
TAJC157*010#NJ	C	150	10	15	8	0.9
TAJD157*010#NJ	D	150	10	15	8	0.9
TAJE157*010#NJ	E	150	10	15	8	0.9
TAJC227*010#NJ	C	220	10	22	18	0.5
TAJD227*010#NJ	D	220	10	22	8	0.5
TAJE227*010#NJ	E	220	10	22	8	0.5
TAJD337*010#NJ	D	330	10	33	8	0.9
TAJE337*010#NJ	E	330	10	33	8	0.9
TAJV337*010#NJ	V	330	10	33	10	0.9
TAJE477*010#NJ	E	470	10	47	10	0.5
TAJV477*010#NJ	V	470	10	47	10	0.5
TAJA225*016#NJ	A	2.2	16	0.5	6	6.5
TAJA335*016#NJ	A	3.3	16	0.5	6	5
TAJB335*016#NJ	B	3.3	16	0.5	6	4.5
TAJA475*016#NJ	A	4.7	16	0.8	6	4
TAJB475*016#NJ	B	4.7	16	0.8	6	3.5
TAJA685*016#NJ	A	6.8	16	1.1	6	3.5
TAJB685*016#NJ	B	6.8	16	1.1	6	2.5
TAJA106*016#NJ	A	10	16	1.6	8	3
TAJB106*016#NJ	B	10	16	1.6	6	2.8
TAJC106*016#NJ	C	10	16	1.6	6	2
TAJA156M016#NJ	A	15	16	2.4	6	2
TAJB156*016#NJ	B	15	16	2.4	6	2.5
TAJC156*016#NJ	C	15	16	2.4	6	1.8
TAJB226*016#NJ	B	22	16	3.5	6	2.3
TAJC226*016#NJ	C	22	16	3.5	6	1.6
TAJD226*016#NJ	D	22	16	3.5	6	1.1
TAJB336*016#NJ	B	33	16	5.3	8	2.1
TAJC336*016#NJ	C	33	16	5.3	6	1.5
TAJD336*016#NJ	D	33	16	5.3	6	0.9
TAJC476*016#NJ	C	47	16	7.5	6	1.4
TAJD476*016#NJ	D	47	16	7.5	6	0.8
TAJC686*016#NJ	C	68	16	10.9	6	1.3

Engineering samples - please contact manufacturer

All technical data relates to an ambient temperature of +25°C. Capacitance and DF are measured at 120Hz, 0.5V RMS with a maximum DC bias of 2.2 volts. DCL is measured at rated voltage after 5 minutes.

TAJ series is MSL level 1 according to J-STD-020C.

* Insert K for ±10% and M for ±20% Capacitance Tolerance

Standard Plating – Insert R for 7" reel and S for 13" reel
 # Gold Plating – Insert A for 7" reel and B for 13" reel
 # Tin Lead Plating – Insert H for 7" reel and K for 13" reel

NOTE: AVX reserves the right to supply a higher voltage rating or tighter tolerance part in the same case size, to the same reliability standards.

RATINGS & PART NUMBER REFERENCE

AVX Part No.	Case Size	Cap (µF)	Rated Voltage (V)	DCL (µA) Max.	DF % Max.	ESR Max. (Ω) @100kHz
TAJD686*016#NJ	D	68	16	10.9	6	0.9
TAJC107*016#NJ	C	100	16	16	8	1.0
TAJD107*016#NJ	D	100	16	16	6	0.9
TAJE107*016#NJ	E	100	16	16	6	0.9
TAJD157*016#NJ	D	150	16	24	6	0.9
TAJE157*016#NJ	E	150	16	24	8	0.3
TAJV157*016#NJ	V	150	16	24	8	0.5
TAJE227*016#NJ	E	220	16	35.2	10	0.5
TAJV227*016#NJ	V	220	16	35.2	8	0.9
TAJV337*016#NJ	V	330	16	52.8	10	0.5
TAJA105*020#NJ	A	1	20	0.5	4	9
TAJA155*020#NJ	A	1.5	20	0.5	6	6.5
TAJA225*020#NJ	A	2.2	20	0.5	6	5.3
TAJB225*020#NJ	B	2.2	20	0.5	6	3.5
TAJA335*020#NJ	A	3.3	20	0.7	6	4.5
TAJB335*020#NJ	B	3.3	20	0.7	6	3
TAJA475*020#NJ	A	4.7	20	0.9	6	4
TAJB475*020#NJ	B	4.7	20	0.9	6	3
TAJA685*020#NJ	A	6.8	20	1.4	6	2.5
TAJB685*020#NJ	B	6.8	20	1.4	6	2.5
TAJC685*020#NJ	C	6.8	20	1.4	6	2
TAJB106*020#NJ	B	10	20	2	6	2.1
TAJC106*020#NJ	C	10	20	2	6	1.2
TAJB156*020#NJ	B	15	20	3	6	2
TAJC156*020#NJ	C	15	20	3	6	1.7
TAJB226*020#NJ	B	22	20	4.4	6	1.8
TAJC226*020#NJ	C	22	20	4.4	6	1.6
TAJD226*020#NJ	D	22	20	4.4	6	0.9
TAJC336*020#NJ	C	33	20	6.6	6	1.5
TAJD336*020#NJ	D	33	20	6.6	6	0.9
TAJC476*020#NJ	C	47	20	9.4	6	0.9
TAJD476*020#NJ	D	47	20	9.4	6	0.9
TAJE476*020#NJ	E	47	20	9.4	6	0.9
TAJD686*020#NJ	D	68	20	13.6	6	0.9
TAJE686*020#NJ	E	68	20	13.6	6	0.9
TAJD107*020#NJ	D	100	20	20	6	0.9
TAJE107*020#NJ	E	100	20	20	6	0.4
TAJV107*020#NJ	V	100	20	20	8	0.9
TAJE157*020#NJ	E	150	20	30	8	0.3
TAJV157*020#NJ	V	150	20	30	8	0.5
TAJA474*025#NJ	A	0.47	25	0.5	4	14
TAJA684*025#NJ	A	0.68	25	0.5	4	10
TAJA105*025#NJ	A	1	25	0.5	4	8
TAJA155*025#NJ	A	1.5	25	0.5	6	7.5
TAJB155*025#NJ	B	1.5	25	0.5	6	5
TAJA225*025#NJ	A	2.2	25	0.6	6	7
TAJB225*025#NJ	B	2.2	25	0.6	6	4.5
TAJA335*025#NJ	A	3.3	25	0.8	6	3.7
TAJB335*025#NJ	B	3.3	25	0.8	6	3.5
TAJA475*025#NJ	A	4.7	25	1.2	6	3.1
TAJB475*025#NJ	B	4.7	25	1.2	6	2.8
TAJB685*025#NJ	B	6.8	25	1.7	6	2.8
TAJC685*025#NJ	C	6.8	25	1.7	6	2
TAJB106*025#NJ	B	10	25	2.5	6	2.5
TAJC106*025#NJ	C	10	25	2.5	6	1.8
TAJD106*025#NJ	D	10	25	2.5	6	1.2
TAJC156*025#NJ	C	15	25	3.8	6	1.6
TAJD156*025#NJ	D	15	25	3.8	6	1
TAJC226*025#NJ	C	22	25	5.5	6	1.4

AVX Part No.	Case Size	Cap (µF)	Rated Voltage (V)	DCL (µA) Max.	DF % Max.	ESR Max. (Ω) @100kHz
TAJD226*025#NJ	D	22	25	5.5	6	0.9
TAJD336*025#NJ	D	33	25	8.3	6	0.9
TAJE336*025#NJ	E	33	25	8.3	6	0.9
TAJD476*025#NJ	D	47	25	11.8	6	0.9
TAJE476*025#NJ	E	47	25	11.8	6	0.9
TAJE686*025#NJ	E	68	25	17	6	0.9
TAJV686*025#NJ	V	68	25	17	6	0.9
TAJE107M025#NJ	E	100	25	25	10	0.3
TAJV107*025#NJ	V	100	25	25	8	0.4
TAJA104*035#NJ	A	0.1	35	0.5	4	24
TAJA154*035#NJ	A	0.15	35	0.5	4	21
TAJA224*035#NJ	A	0.22	35	0.5	4	18
TAJA334*035#NJ	A	0.33	35	0.5	4	15
TAJA474*035#NJ	A	0.47	35	0.5	4	12
TAJB474*035#NJ	B	0.47	35	0.5	4	10
TAJA684*035#NJ	A	0.68	35	0.5	4	8
TAJB684*035#NJ	B	0.68	35	0.5	4	8
TAJA105*035#NJ	A	1	35	0.5	4	7.5
TAJB105*035#NJ	B	1	35	0.5	4	6.5
TAJA155*035#NJ	A	1.5	35	0.5	6	7.5
TAJB155*035#NJ	B	1.5	35	0.5	6	5.2
TAJC155*035#NJ	C	1.5	35	0.5	6	4.5
TAJA225*035#NJ	A	2.2	35	0.8	6	4.5
TAJB225*035#NJ	B	2.2	35	0.8	6	4.2
TAJC225*035#NJ	C	2.2	35	0.8	6	3.5
TAJB335*035#NJ	B	3.3	35	1.2	6	3.5
TAJC335*035#NJ	C	3.3	35	1.2	6	2.5
TAJB475*035#NJ	B	4.7	35	1.6	6	3.1
TAJC475*035#NJ	C	4.7	35	1.6	6	2.2
TAJD475*035#NJ	D	4.7	35	1.6	6	1.5
TAJC685*035#NJ	C	6.8	35	2.4	6	1.8
TAJD685*035#NJ	D	6.8	35	2.4	6	1.3
TAJC106*035#NJ	C	10	35	3.5	6	1.6
TAJD106*035#NJ	D	10	35	3.5	6	1
TAJE106*035#NJ	E	10	35	3.5	6	0.9
TAJC156*035#NJ	C	15	35	5.3	6	1.4
TAJD156*035#NJ	D	15	35	5.3	6	0.9
TAJD226*035#NJ	D	22	35	7.7	6	0.9
TAJE226*035#NJ	E	22	35	7.7	6	0.5
TAJD336*035#NJ	D	33	35	11.6	6	0.9
TAJE336*035#NJ	E	33	35	11.6	6	0.5
TAJV336*035#NJ	V	33	35	11.6	6	500
TAJE476*035#NJ	E	47	35	16.5	6	0.9
TAJV476*035#NJ	V	47	35	16.5	6	0.4
TAJV686M035#NJ	V	68	35	23.8	6	0.5
TAJA104*050#NJ	A	0.1	50	0.5	4	22
TAJA154*050#NJ	A	0.15	50	0.5	4	15
TAJB154*050#NJ	B	0.15	50	0.5	4	17
TAJA224*050#NJ	A	0.22	50	0.5	4	18
TAJB224*050#NJ	B	0.22	50	0.5	4	14
TAJB334*050#NJ	B	0.33	50	0.5	4	12
TAJA474*050#NJ	A	0.47	50	0.5	4	9.5
TAJB474*050#NJ	B	0.47	50	0.7	4	9.5
TAJC474*050#NJ	C	0.47	50	0.5	4	8
TAJA684*050#NJ	A	0.68	50	0.5	4	7.9
TAJB684*050#NJ	B	0.68	50	0.5	4	8
TAJC684*050#NJ	C	0.68	50	0.5	4	7
TAJA105M050#NJ	A	1	50	0.5	4	6.6
TAJB105*050#NJ	B	1	50	0.5	6	7

Engineering samples - please contact manufacturer

All technical data relates to an ambient temperature of +25°C. Capacitance and DF are measured at 120Hz, 0.5V RMS with a maximum DC bias of 2.2 volts. DCL is measured at rated voltage after 5 minutes.

TAJ series is MSL level 1 according to J-STD-020C.

* Insert K for ±10% and M for ±20% Capacitance Tolerance

Standard Plating – Insert R for 7" reel and S for 13" reel
 # Gold Plating – Insert A for 7" reel and B for 13" reel
 # Tin Lead Plating – Insert H for 7" reel and K for 13" reel

NOTE: AVX reserves the right to supply a higher voltage rating or tighter tolerance part in the same case size, to the same reliability standards.

TAJ Series



Standard Tantalum

RATINGS & PART NUMBER REFERENCE

AVX Part No.	Case Size	Cap (µF)	Rated Voltage (V)	DCL (µA) Max.	DF % Max.	ESR Max. (Ω) @100kHz
TAJC105*050#NJ	C	1	50	0.5	4	5.5
TAJC155*050#NJ	C	1.5	50	0.8	6	4.5
TAJD155*050#NJ	D	1.5	50	0.8	6	4
TAJC225*050#NJ	C	2.2	50	1.1	6	3
TAJD225*050#NJ	D	2.2	50	1.1	6	2.5
TAJC335*050#NJ	C	3.3	50	1.7	6	2.5
TAJD335*050#NJ	D	3.3	50	1.7	6	2
TAJC475*050#NJ	C	4.7	50	0.5	4	1.4
TAJD475*050#NJ	D	4.7	50	2.4	6	1.4
TAJC685*050#NJ	C	6.8	50	3.4	6	1
TAJD685*050#NJ	D	6.8	50	3.4	6	1
TAJD106*050#NJ	D	10	50	5	6	0.8
TAJE106*050#NJ	E	10	50	5	6	1
TAJV106*050#NJ	V	10	50	5	6	0.65
TAJD156*050#NJ	D	15	50	7.5	4	0.6
TAJE156*050#NJ	E	15	50	7.5	6	0.6
TAJV156*050#NJ	V	15	50	7.5	6	0.6
TAJV226*050#NJ	V	22	50	11	8	0.6

Engineering samples - please contact manufacturer

All technical data relates to an ambient temperature of +25°C. Capacitance and DF are measured at 120Hz, 0.5V RMS with a maximum DC bias of 2.2 volts. DCL is measured at rated voltage after 5 minutes.

TAJ series is MSL level 1 according to J-STD-020C.

* Insert K for ±10% and M for ±20%
Capacitance Tolerance

Standard Plating – Insert R for 7" reel and S for 13" reel
Gold Plating – Insert A for 7" reel and B for 13" reel
Tin Lead Plating – Insert H for 7" reel and K for 13" reel

NOTE: AVX reserves the right to supply a higher voltage rating or tighter tolerance part in the same case size, to the same reliability standards.

X-ON Electronics

Largest Supplier of Electrical and Electronic Components

Click to view similar products for [Tantalum Capacitors - Solid SMD category:](#)

Click to view products by [Kyocera AVX manufacturer:](#)

Other Similar products are found below :

[CWR06HC106KB](#) [B45197-A2157-M509](#) [B45197A5226M409](#) [NTC-T476K10TRDF](#) [CWR06KC106KP](#) [CWR09KB106KCA](#)
[TCSCS1A336KBAR](#) [TCTP0J336M8R](#) [B45196-H5106-K309](#) [B45196-H6226-K509](#) [CWR09JC225JBB](#) [T83D475K050RCCL](#)
[TCSCS1A476KBAR](#) [T83E107K016RCCL](#) [T83D685K035RCCL](#) [595D107X0004B2T](#) [CWR11HH105KB](#) [293D155X9020A2DE3](#)
[CWR09NC224KB](#) [CWR11MC685KCB](#) [CWR29FC685KCEC](#) [CWR09NC684KM](#) [CWR19MH106KCHB](#) [CWR29HH155KCBB](#)
[CWR29HC106KCDC](#) [CWR29FC336KDGC](#) [CWR09NC225KDB](#) [CWR29FC475KDDC](#) [CWR29HC225KCAC](#) [CWR11KC106KBB](#)
[CWR09JH105KC](#) [293D476X9035E2TE3](#) [CWR29JC335KDDC](#) [CWR29KC226JCGC](#) [CWR29FC105KDAC](#) [CWR29DC337KCHC](#) [NTC-](#)
[T686K6.3TRBF](#) [595D686X9010B2T](#) [595D106X0025C8T](#) [TAZH685K035LBSB0824](#) [TAZG107K010LBSB0800](#) [TAZH475K050LBSB0H23](#)
[TAJD107K016KNJ](#) [TAZH227K010LBSB0024](#) [TAZH156K025CBSZ0824](#) [TAZH227J010LBSZ0800](#) [TPSE687M006H0045](#)
[TBJD156K025CBSZ0824](#) [TMCSA1V154MTRF](#) [TMCSA0G335MTRF](#)