

NEW



Quality and reliability is our tradition

KYORITSU

AC DIGITAL CLAMP METER KEW 2200R / 2200

1000A AC Clamp Meter Ultra slim & lightweight!



Φ33

KEW 2200R

True RMS type

TRUERMS

- Ultra slim and lightweight
Handy design
- Φ33mm Tear Drop Jaw easy to
use in tight places
- 1000A AC Clamp Meter
- DMM function ACV, DCV, Ω,
Continuity Buzzer
- Fuseless electronic protection on
Ω/⊘ up to 600V
- Safety Standard
IEC 61010-1, 61010-2-032
CAT IV300V* / CAT III600V

*2200R only



KEW 2200

Averaging
value type

Actual Size



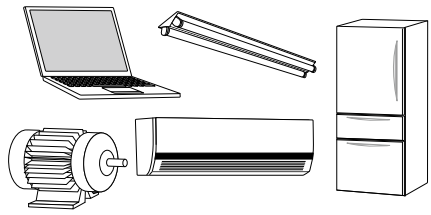
KYORITSU ELECTRICAL INSTRUMENTS WORKS,LTD.

<http://www.kew-ltd.co.jp>

● KEW 2200R / 2200 Specifications

	KEW 2200R	KEW 2200
Detection method	RMS	Averaging value
AC A	40.00/400.0/1000A(Auto-ranging) ±1.5%rdg±5dgt(45~65Hz) ±2.0%rdg±5dgt(40Hz~1kHz)	40.00/400.0/1000A(Auto-ranging) ±1.4%rdg±6dgt(50/60Hz) ±1.6%rdg±6dgt(45~65Hz)
AC V	4.000/40.00/400.0/600V(Auto-ranging) ±1.8%rdg±7dgt(45~65Hz) ±2.3%rdg±8dgt(65~500Hz)	
DC V	400.0mV/4.000/40.00/400.0/600V(Auto-ranging) ±1.0%rdg±3dgt* *400mV range is excluded	
Ω	400.0Ω/4.000/40.00/400.0kΩ/4.000/40.00MΩ(Auto-ranging) ±2.0%rdg±4dgt(0~400kΩ) ±4.0%rdg±4dgt(4MΩ) ±8.0%rdg±4dgt(40MΩ)	
Continuity buzzer	buzzer sounds below 50±30Ω	
Conductor size	φ33mm max.	
Applicable standards	IEC61010-1 CATIV300V, CAT III 600V Pollution degree2(AC A) *2200R only CAT III 300V, CAT II 600V Pollution degree2(AC/DC V) IEC61010-031, IEC61010-2-032, IEC61326(EMC), EN50581(RoHS)	
Power source	R03/LR03(AAA)(1.5V)×2	
Continuous measuring time	Approx.120 hours	Approx.350 hours
	Auto power off : approx.10 minutes	
Dimensions/Weight	190(L)×68(W)×20(D)mm / Approx.120g(including batteries)	
Accessories	7107A (Test leads), 9160 (Carrying case), R03(AAA)×2, Instruction manual	
Optional	8008 (Multi-tran)	

Reliable result can be obtained even from distorted wave form generated by nowadays electronic loads



Waveform	True RMS type TRUE RMS	Averaging value type
	✓correct reading	✓correct reading
	✓correct reading	higher reading
	✓correct reading	lower reading
	✓correct reading	lower reading

● Accessories

Cable length: 1,100mm



7107A



9160

● Optional

For measurements up to 3000A
Conductor size: φ100mm
Input to output: 10:1



8008

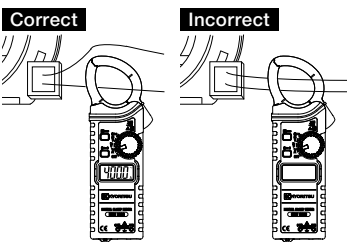
Teardrop shaped jaw for easy use in crowded cable areas



Slim and compact that fits right into your pocket



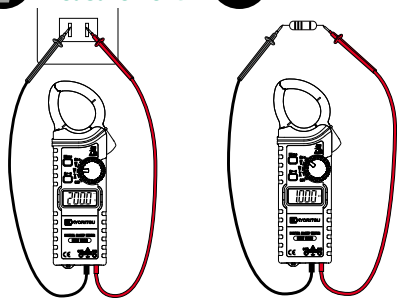
A Current Measurement



Press the trigger to open the current sensor and clamp the one conductor under test.



V Voltage Measurement



Connect the test leads to the circuit under test.



Safety Warnings :

Please read the "Safety Warnings" in the instruction manual supplied with the instrument thoroughly and completely for correct use. Failure to follow the safety rules can cause fire, trouble, electrical shock, etc. Therefore, make sure to operate the instrument on a correct power supply and voltage rating marked on each instrument.

■ For inquires or orders :



KYORITSU ELECTRICAL INSTRUMENTS WORKS, LTD.

2-5-20, Nakane, Meguro-ku, Tokyo, 152-0031 Japan
Phone:+81-3-3723-0131
Fax:+81-3-3723-0152
E-mail:info-eng@kew-ltd.co.jp

<http://www.kew-ltd.co.jp>



In consideration of the environment, soy ink and recycled paper were used in this publication.

●The contents of this leaflet are subject to change without notice. KEW 2200R/2200-1E Sep. 14 AD

X-ON Electronics

Largest Supplier of Electrical and Electronic Components

Click to view similar products for [Clamp Multimeters & Accessories](#) category:

Click to view products by [Kyoritsu](#) manufacturer:

Other Similar products are found below :

[I800](#) [BK313C](#) [BM035](#) [BM198PV](#) [BK312C](#) [BM031](#) [BM037](#) [BM078](#) [BM088](#) [P 4250](#) [P 4350](#) [WMGBCMP401](#) [KEW105816](#)
[WMGBCMP200](#) [WMGBCMP2000](#) [WMGBCMP3000](#) [WMGBCMP400](#) [FLUKE 377 FC](#) [FLUKE 378 FC](#) [FLUKE 393 FC](#) [MW3035](#) [NC11-200M1](#) [NC12-200M1](#) [NC14-100M1](#) [P 1610](#) [P 1615](#) [P 1625](#) [P 1640](#) [P 1650](#) [P 1655](#) [P 1660](#) [P 1665](#) [P 1700](#) [UT202F](#) [UT202R](#) [UT219E](#)
[UT281A](#) [UT281C](#) [DCM140](#) [1000-304](#) [TESTO 770-3](#) [0590](#) [7703](#) [AX-3550](#) [AX-M266C](#) [BM079](#) [BM089](#) [BM197](#) [UT204](#) [KEW2210R](#)
[FLUKE 80I-110S](#) [FLUKE A3002FC](#)