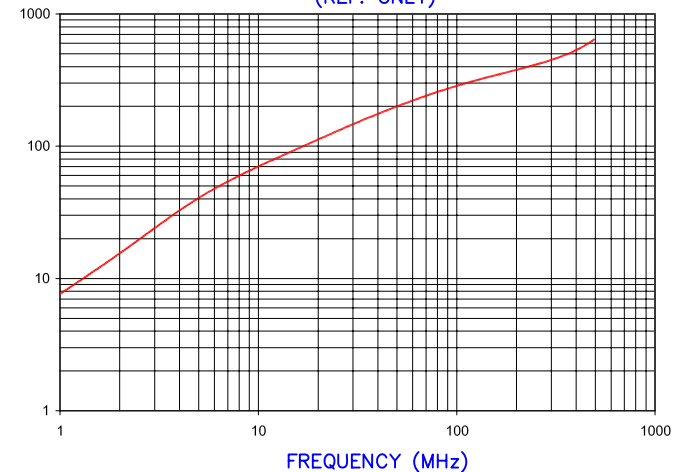


IMPEDANCE (Z)			
Frequency	25 MHz	100 MHz	300 MHz
Nominal (REF)	130 Ω	280 Ω	440 Ω
Minimum	- Ω	224 Ω	- Ω

Z vs. FREQUENCY
(REF. ONLY)



CORE DIMENSIONS:

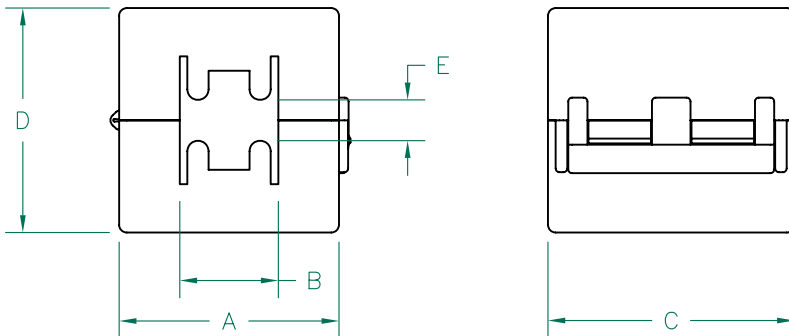
A	25.91 [1.020]	+	0.46 [.018]
B	13.06 [.514]	+	0.25 [.010]
C	28.58 [1.125]	+	0.64 [.025]
D	12.95 [.510]	+	0.18 [.007]

UNCONTROLLED DOCUMENT

AGILENT E4991A Impedance/Material Analyzer
HP 16092A-Test Fixture, REF 3158

NOTES:

1. ASSEMBLED PART #: 28A2024-0A2
2. CASE COLOR: BLACK.
3. CASE FLAMMABILITY RATING: UL94 V-2.
4. CASE MATERIAL: Halogen Free Nylon



CASE DIMENSIONS:

A	29.00 [1.142]	+	REF.
B	13.00 [.512]	+	REF.
C	32.50 [1.280]	+	REF.
D	29.62 [1.166]	+	REF.
E	5.64 [.222]	+	REF.

DIMENSIONS ARE IN mm[INCHES].				This print is the property of Laird Tech. and is loaned in confidence subject to return upon request and with the understanding that no copies shall be made without the written consent of Laird Tech. All rights to design or invention are reserved.		Laird TECHNOLOGIES®		
F	UPDATED NOTE 3	09/15/10	JUN					
E	UPDATE COMPANY LOGO ADD NOTES 3&4	01/27/09	JRK					
D	UPDATE 100 MHz MINIMUM VALUE CORRECT CASE DIM "B" TOLERANCE SYMBOL	06/07/07	TMB					
C	UPDATE COMPANY LOGO	04/18/07	TMB					
B	UPDATE "D" DIM ON CASE REVISE NOTES	08/24/06	TMB					
A	ORIGINAL DRAFT	06/29/04	JRK					
REV	DESCRIPTION	DATE	INT					
				PROJECT/PART NUMBER: 28A2024-0A2		REV: F	PART TYPE: FERRITE SNAP ON	DRAWN BY: JRK
				DATE: 06/29/04	SCALE: NTS	MATERIAL: NIzn FERRITE		
				CAD # 28A2024-0A2-F	TOOL # -			

X-ON Electronics

Largest Supplier of Electrical and Electronic Components

Click to view similar products for [Ferrite Clamp On Cores](#) category:

Click to view products by [Laird](#) manufacturer:

Other Similar products are found below :

[CS28B0984](#) [CS28B1501](#) [CV28B1642](#) [RA33B4340](#) [IL25B0642K](#) [SA28B0121](#) [SS33B2033](#) [HI28B2039](#) [RA33B2480](#) [TC28B0805](#)
[432703037561](#) [CF28B0642](#) [SS33B2035](#) [TC28B2000](#) [CF28B1937](#) [SS20B2037](#) [SS33B2032](#) [TC20B1500](#) [SS25B2032](#) [SS20B2034](#)
[PM28B0686](#) [CW28B0642](#) [CV28B1984](#) [RA20B1729](#) [CS33B4000](#) [TC33B0805](#) [SS33B2040](#) [TC28B1501](#) [AS33B2036](#) [AS25B2032](#)
[TC28B0550](#) [CS25B2000](#) [AS25B2036](#) [AS28B2027](#) [CS33B2000](#) [74271111](#) [74271132](#) [74271132S](#) [74271142](#) [74271222](#) [7427151](#) [74271622S](#)
[RRH-100-50-100](#) [RRH-105-55-200](#) [RRH-115-43-260](#) [RRH-142-70-285](#) [RRH-175-107-285](#) [RRH-186-102-250](#) [RRH-186-102-286](#) [RRH-259-128-286](#)