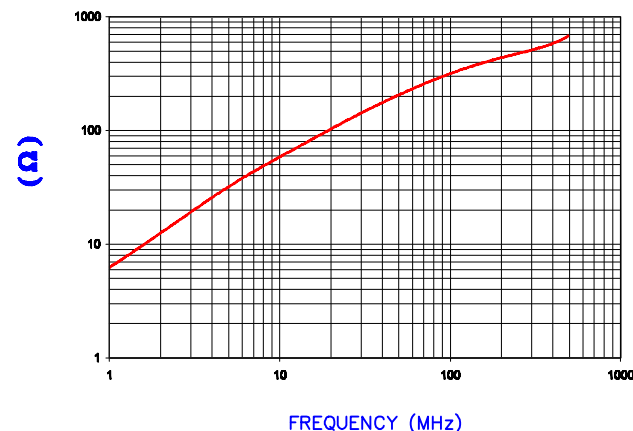


**CORE DIMENSIONS:**

A	14.99 [.590]	±	0.30 [.012]
B	6.60 [.260]	±	0.20 [.008]
C	29.16 [1.148]	±	0.64 [.025]
D	7.44 [.293]	±	0.15 [.006]

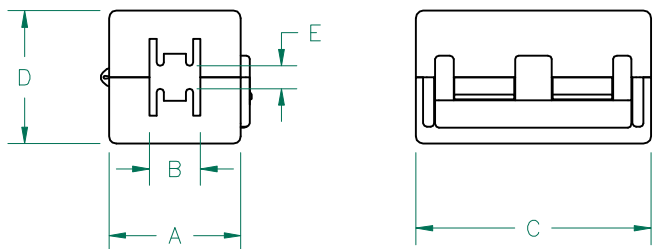
IMPEDANCE (Z)			
Frequency	25 MHz	100 MHz	300 MHz
Nominal (REF)	130 Ω	320 Ω	510
Minimum	- Ω	256 Ω	-

Z vs. FREQUENCY  
(REF. ONLY)



AGILENT E4991A Impedance/Material Analyzer  
HP 16092A-Test Fixture, REF # 3458

**UNCONTROLLED DOCUMENT**



**CASE DIMENSIONS:**

A	18.15 [.715]	±	1.00 [.039]
B	7.05 [.278]	±	1.00 [.039]
C	32.50 [1.280]	±	1.00 [.039]
D	18.90 [.744]	±	1.00 [.039]
E	3.40 [.134]		Ref.

NOTES:

1. ASSEMBLED PART #: 28A2025-0A2
2. CASE COLOR: BLACK - "0A2"
3. CASE FLAMMABILITY RATING: UL94 V-2.
4. CASE MATERIAL: Halogen Free Nylon

DIMENSIONS ARE IN mm [INCHES].				This print is the property of Laird Tech. and is loaned in confidence subject to return upon request and with the understanding that no copies shall be made without the written consent of Laird Tech. All rights to design or invention are reserved.		<b>Laird TECHNOLOGIES</b>	
K	UPDATED CASE TOLERANCE	11/09/12	Jcai	PROJECT/PART NUMBER: <b>28A2025-0A2</b>		REV	DRAWN BY: JRK
J	UPDATED CORE MATERIAL	03/13/12	Jcai			K	
H	UPDATED NOTE 3	09/15/10	JUN	DATE: 06/29/04		SCALE:	MATERIAL: <b>FERRITE</b>
G	UPDATE COMPANY LOGO ADD NOTES 3&4	01/27/09	JRK			NTS	
F	UPDATE 100MHz MINIMUM VALUE UPDATE COMPANY LOGO	07/16/07	TMB	CAD # 28A2025-0A2-K		TOOL #	-
E	REMOVE CORE & CASE P/N REFERENCE	05/17/06	TMB				
D	REVISE CASE DIMENSIONS A, B, & D COR REV LEVEL TYPO IN LAST REVISION	04/01/06	TMB				
C	CHG CORE "C" & "D" DIM TOLERANCES CHG NOTE 5 CASE COLOR TO BLACK	01/26/06	TMB				
REV	DESCRIPTION	DATE	INT				

## X-ON Electronics

Largest Supplier of Electrical and Electronic Components

*Click to view similar products for [Ferrite Clamp On Cores](#) category:*

*Click to view products by [Laird](#) manufacturer:*

Other Similar products are found below :

[CS28B0984](#) [CS28B1501](#) [CV28B1642](#) [RA33B4340](#) [IL25B0642K](#) [SA28B0121](#) [SS33B2033](#) [HI28B2039](#) [RA33B2480](#) [TC28B0805](#)  
[432703037561](#) [CF28B0642](#) [SS33B2035](#) [TC28B2000](#) [CF28B1937](#) [SS20B2037](#) [SS33B2032](#) [TC20B1500](#) [SS25B2032](#) [SS20B2034](#)  
[PM28B0686](#) [CW28B0642](#) [CV28B1984](#) [RA20B1729](#) [CS33B4000](#) [TC33B0805](#) [SS33B2040](#) [TC28B1501](#) [AS33B2036](#) [AS25B2032](#)  
[TC28B0550](#) [CS25B2000](#) [AS25B2036](#) [AS28B2027](#) [CS33B2000](#) [74271111](#) [74271132](#) [74271132S](#) [74271142](#) [74271222](#) [7427151](#) [74271622S](#)  
[RRH-100-50-100](#) [RRH-105-55-200](#) [RRH-115-43-260](#) [RRH-142-70-285](#) [RRH-175-107-285](#) [RRH-186-102-250](#) [RRH-186-102-286](#) [RRH-259-128-286](#)