

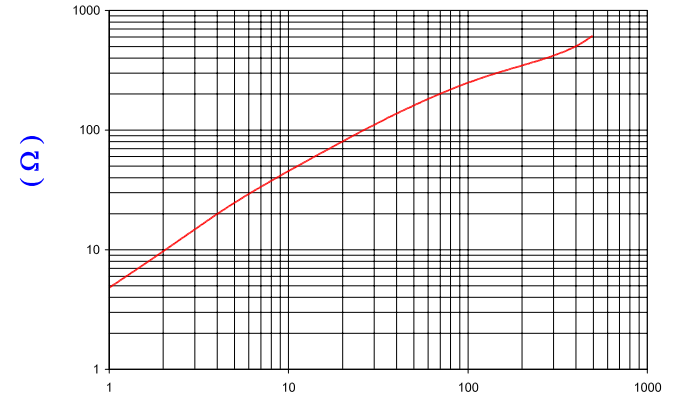
CORE DIMENSIONS:

A	18.66 [.735]	±	0.38 [.015]
B	10.16 [.400]	±	0.20 [.008]
C	28.96 [1.140]	±	0.51 [.020]
D	9.40 [.370]	±	0.19 [.007]

UNCONTROLLED DOCUMENT

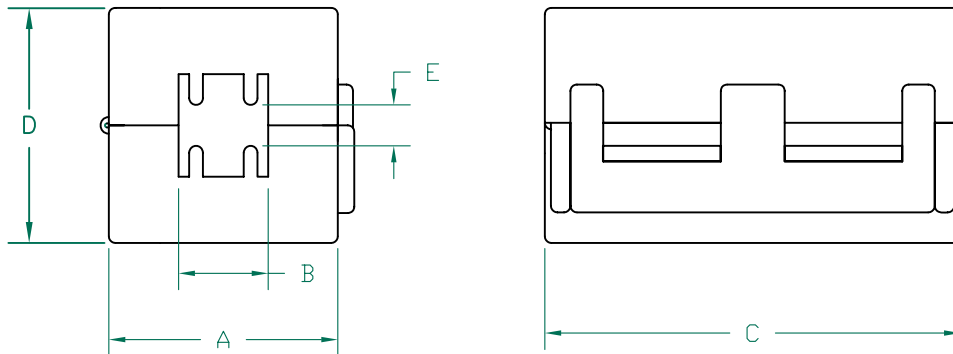
IMPEDANCE (Z)			
Frequency	25 MHz	100 MHz	300 MHz
Nominal (REF)	95 Ω	250 Ω	420 Ω
Minimum	- Ω	200 Ω	- Ω

Z vs. FREQUENCY
(REF. ONLY)



FREQUENCY (MHz)

AGILENT E4991A Impedance/Material Analyzer
HP 16092A-Test Fixture, REF #3399



NOTES:

1. ASSEMBLED PART #: 28A2029-0A2
2. CASE COLOR: BLACK - "0A2"
3. CASE FLAMMABILITY RATING: UL94 V-2.
4. CASE MATERIAL: Halogen Free Nylon

CASE DIMENSIONS:

A	22.28 [.877]	±	Ref.
B	10.00 [.394]	±	Ref.
C	32.77 [1.290]	±	Ref.
D	21.84 [.860]	±	Ref.
E	4.30 [.170]	±	Ref.

DIMENSIONS ARE IN mm [INCHES].				This print is the property of Laird Tech. and is loaned in confidence subject to return upon request and with the understanding that no copies shall be made without the written consent of Laird Tech. All rights to design or invention are reserved.		
K	UPDATED NOTE 3	09/15/10	JUN			
J	UPDATE COMPANY LOGO ADD NOTES 3&4	01/27/09	JRK			
H	UPDATE 100MHz MINIMUM VALUE	07/17/07	TMB			
G	UPDATE COMPANY LOGO	04/18/07	TMB			
F	UPDATE CASE DIMENSIONS A, C, & D CHANGE CASE DIM TOLERANCES TO REF	10/30/06	TMB			
E	CHANGE CASE "B" DIM TO 10.00 [.394] & TOLERANCE TO 0.51 [.020]	07/07/06	TMB	PROJECT/PART NUMBER: 28A2029-0A2	REV K	DRAWN BY: JRK
REV	DESCRIPTION	DATE	INT	DATE: 09/20/04	SCALE: NTS	MATERIAL: NiZn FERRITE
				CAD # 28A2029-0A2-K	TOOL # -	

X-ON Electronics

Largest Supplier of Electrical and Electronic Components

Click to view similar products for [Ferrite Clamp On Cores](#) category:

Click to view products by [Laird](#) manufacturer:

Other Similar products are found below :

[CS28B0984](#) [CS28B1501](#) [CV28B1642](#) [RA33B4340](#) [IL25B0642K](#) [SA28B0121](#) [SS33B2033](#) [HI28B2039](#) [RA33B2480](#) [TC28B0805](#)
[432703037561](#) [CF28B0642](#) [SS33B2035](#) [TC28B2000](#) [CF28B1937](#) [SS20B2037](#) [SS33B2032](#) [TC20B1500](#) [SS25B2032](#) [SS20B2034](#)
[PM28B0686](#) [CW28B0642](#) [CV28B1984](#) [RA20B1729](#) [CS33B4000](#) [TC33B0805](#) [SS33B2040](#) [TC28B1501](#) [AS33B2036](#) [AS25B2032](#)
[TC28B0550](#) [CS25B2000](#) [AS25B2036](#) [AS28B2027](#) [CS33B2000](#) [74271111](#) [74271132](#) [74271132S](#) [74271142](#) [74271222](#) [7427151](#) [74271622S](#)
[RRH-100-50-100](#) [RRH-105-55-200](#) [RRH-115-43-260](#) [RRH-142-70-285](#) [RRH-175-107-285](#) [RRH-186-102-250](#) [RRH-186-102-286](#) [RRH-259-128-286](#)