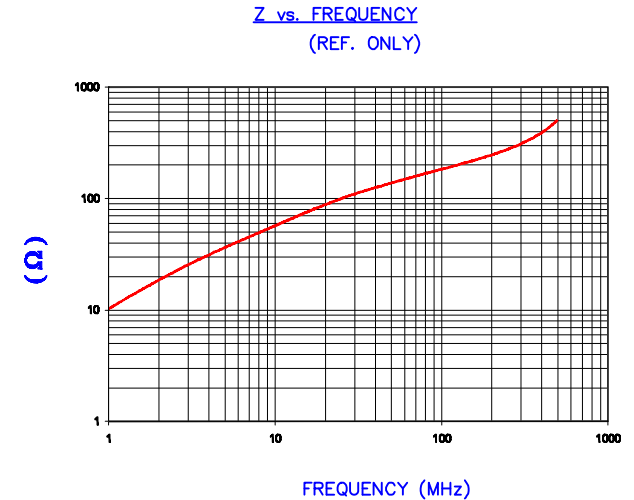


DETAIL A
SCALE: 5:1

IMPEDANCE (Z)			
Frequency	25 MHz	100 MHz	300 MHz
Nominal (REF)	100 Ω	194 Ω	310 Ω
Minimum	- Ω	155 Ω	- Ω



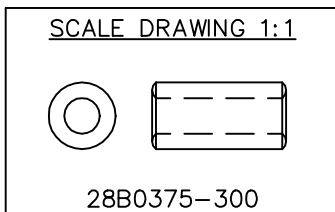
AGILENT E4991A Impedance/Material Analyzer
HP 16092A Test Fixture

**UNCONTROLLED
DOCUMENT**

DIMENSIONS

A	9.53 [.375]	±	0.20 [.008]
B	5.08 [.200]	±	0.15 [.006]
C	19.05 [.750]	±	0.51 [.020]

WEIGHT/1000 4.73 kgs 10.42 lbs



DIMENSIONS ARE IN MM [INCHES].				This print is the property of Laird Tech. and is loaned in confidence subject to return upon request and with the understanding that no copies shall be made without the written consent of Laird Tech. All rights to design or invention are reserved.		Laird TECHNOLOGIES			
F	UPDATE LOGO REVISE CHAMFER DESIGN	11/03/08	JRK	PROJECT/PART NUMBER: 28B0375-300		REV	PART TYPE:	DRAWN BY:	
E	ADD CURVE UPDATE Z SPECS, REMOVE COATING SPECS CHG P/N FROM 30*	05/12/03	JRK			F	CNZ CORE	LNK	
D	UPDATE PRINT FORMAT	11/12/01	JRK	DATE:	SCALE:	MATERIAL:			
C	CHG P/N TO 28B0375-30*, ADD COATING SPECS	03/26/99	I.S.	8/04/92	3 : 1	NiZn Ferrite			
B	UPDATED P/N FOR NEW CATALOG	12/11/95	JBE	CAD #	TOOL #				
A	ORIGINAL DRAFT	8/04/92	LNK	28B0375-300-F	B0375				
REV	DESCRIPTION	DATE	INT						

X-ON Electronics

Largest Supplier of Electrical and Electronic Components

Click to view similar products for [Ferrite Cable Cores](#) category:

Click to view products by [Laird](#) manufacturer:

Other Similar products are found below :

[FB73-422](#) [FX28R0984-2](#) [AB 3X2X3SM](#) [2643665709](#) [28R1127](#) [28R1260](#) [28R1575](#) [2631006302](#) [28R0760](#) [432703057171](#) [432202134321](#)
[4327 030 11761](#) [SS7X4X3W](#) [4327 030 16141](#) [ASSE017-2](#) [2943666671](#) [4327 030 12611](#) [SM28R1575](#) [HFB123049-300](#) [HFB143064-100](#)
[HFB143064-300](#) [HFB170070-000](#) [ETD29/16/10-3C94](#) [ETD29-3F3](#) [ETD39-3C94](#) [RFP1-40-28-M-A5](#) [RFP2-10-10-A5](#) [RFP2-25-12-A5](#)
[RFS1-14-15-A5](#) [RFS1-15-12-A5](#) [RFS1-15-7-2-A5](#) [RFS1-6-8-A5](#) [RFS2-16-12-A5](#) [RFS2-27-12-A5](#) [RFS2-40-12-A5](#) [RFS2-9-12-2-A5](#) [RFS3-](#)
[6-7-A5](#) [RKCF-05-A5](#) [RKCF-08-A5](#) [RKCF-13-A5](#) [74270036](#) [7427212](#) [B-20L-95B](#) [B66317G0000X127](#) [U100/57/25-3C90](#) [LFB127079-000](#)
[LFB143064-000](#) [LFB159079-000](#) [LFB250150-000](#) [RRC-12-7-15-M](#)