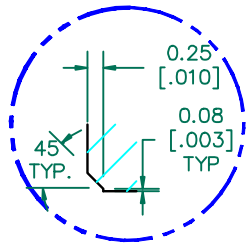
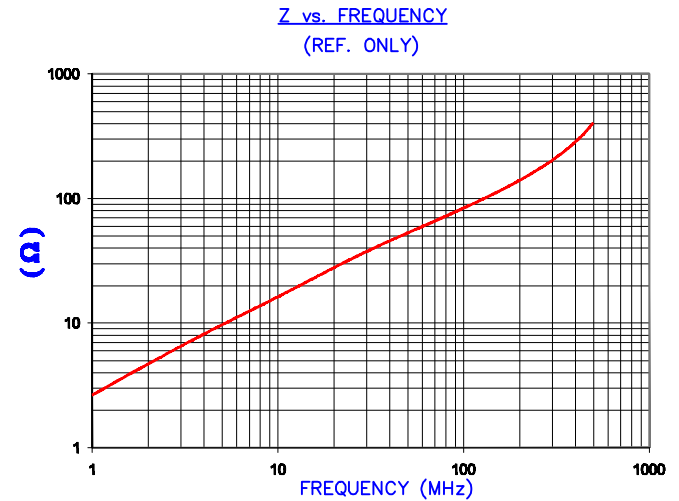


SEE DETAIL "A"



DETAIL "A"
CHAMFER
SCALE=4:1

IMPEDANCE (Z)			
Frequency	25 MHz	100 MHz	300 MHz
Nominal (REF)	33 Ω	83 Ω	200 Ω
Minimum	- Ω	66 Ω	- Ω



AGILENT E4991A Impedance/Material Analyzer
HP 18092A Test Fixture

UNCONTROLLED DOCUMENT

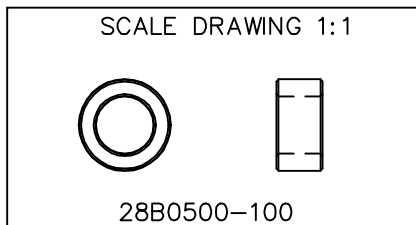
FERRITE CORE DIMENSIONS (SPEC): mm/inches

A	12.70 [.500]	+	0.25 [.010]
B	7.92 [.312]	+	0.15 [.006]
C	6.35 [.250]	+	0.18 [.007]

WEIGHT/1000 2.4 kgs [5.3 Lbs]

NOTES:

- PARTS MUST BE TUMBLED, BURNISHED OR DEBURRED TO REMOVE ALL BURRS AND SHARP EDGES.



DIMENSIONS ARE IN mm [INCHES].				This print is the property of Laird Tech. and is loaned in confidence subject to return upon request and with the understanding that no copies shall be made without the written consent of Laird Tech. All rights to design or invention are reserved.					
REV	DESCRIPTION	DATE	INT						
K	UPDATE COMPANY LOGO & CHAMFER	03/07/08	JRK	PROJECT/PART NUMBER: 28B0500-100		REV	K	PART TYPE: FERRITE CORE	DRAWN BY: LNK
J	UPDATE Z SPEC AND COMPANY LOGO	05/30/07	JRK			DATE:	08/05/92	SCALE:	3:1
H	UPDATE MIN Z SPEC @ 100 MHZ	10/04/06	JRK	CAD #	28B0500-100-K	TOOL #	B0500		
G	UPDATE PRINT FORMAT AND Z SPECS ADD Z CURVE	03/03/03	JRK						
F	ADD NOTE # 1 UPDATE LAYOUT	05/01/02	JRK						
E	CHANGE PRINT LAYOUT, ADD Z CURVE, REMOVE COATING CHG P/N FROM -10*, UPDATE Z SPECS	04/25/02	JRK						
D	UPDATE PRINT FORMAT ADD DETAIL A	04/24/02	JRK						
REV	DESCRIPTION	DATE	INT						

X-ON Electronics

Largest Supplier of Electrical and Electronic Components

Click to view similar products for [Ferrite Cable Cores](#) category:

Click to view products by [Laird](#) manufacturer:

Other Similar products are found below :

[FB73-422](#) [FX28R0984-2](#) [AB 3X2X3SM](#) [2643665709](#) [28R1127](#) [28R1260](#) [28R1575](#) [2631006302](#) [28R0760](#) [432703057171](#) [432202134321](#)
[4327 030 11761](#) [SS7X4X3W](#) [4327 030 16141](#) [ASSE017-2](#) [2943666671](#) [4327 030 12611](#) [SM28R1575](#) [HFB123049-300](#) [HFB143064-100](#)
[HFB143064-300](#) [HFB170070-000](#) [ETD29/16/10-3C94](#) [ETD29-3F3](#) [ETD39-3C94](#) [RFP1-40-28-M-A5](#) [RFP2-10-10-A5](#) [RFP2-25-12-A5](#)
[RFS1-14-15-A5](#) [RFS1-15-12-A5](#) [RFS1-15-7-2-A5](#) [RFS1-6-8-A5](#) [RFS2-16-12-A5](#) [RFS2-27-12-A5](#) [RFS2-40-12-A5](#) [RFS2-9-12-2-A5](#) [RFS3-](#)
[6-7-A5](#) [RKCF-05-A5](#) [RKCF-08-A5](#) [RKCF-13-A5](#) [74270036](#) [7427212](#) [B-20L-95B](#) [B66317G0000X127](#) [U100/57/25-3C90](#) [LFB127079-000](#)
[LFB143064-000](#) [LFB159079-000](#) [LFB250150-000](#) [RRC-12-7-15-M](#)