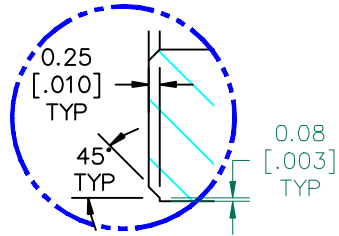


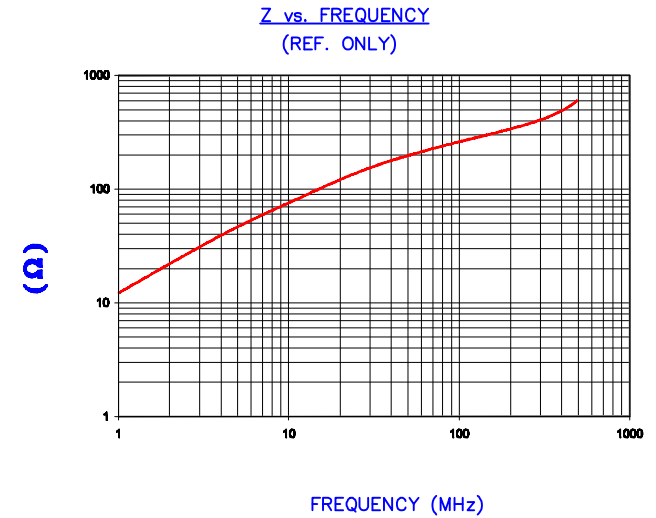
SEE DETAIL "A"



CHAMFER  
DETAIL A  
(N.T.S.)

**UNCONTROLLED  
DOCUMENT**

IMPEDANCE ( Z )			
Frequency	25 MHz	100 MHz	300 MHz
Nominal (REF)	149 Ω	287 Ω	406 Ω
Minimum	- Ω	230 Ω	- Ω

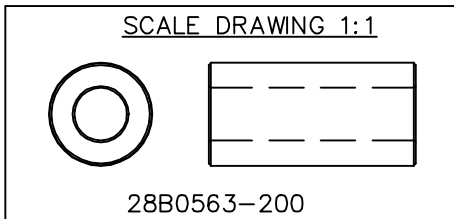


AGILENT E4991A Impedance/Material Analyzer  
HP 16082A Test Fixture REF #3135

FERRITE CORE DIMENSIONS (SPEC): mm [in]

A	14.27 [.562]	±	0.25 [.010]
B	7.26 [.286]	±	0.15 [.006]
C	28.57 [1.125]	±	0.78 [.030]

WEIGHT/1000 16.75 kgs 36.92 lbs



DIMENSIONS ARE IN MM [INCHES].				THIS DOCUMENT CONTAINS INFORMATION WHICH IS PROPRIETARY AND CONFIDENTIAL TO STEWARD. NO PRODUCTION OR PUBLICATION OF THIS DOCUMENT IN WHOLE OR IN PART SHALL BE MADE WITHOUT WRITTEN AUTHORIZATION FROM STEWARD.			
H	UPDATE MIN Z SPEC AND COMPANY LOGO	06/04/07	JRK				
G	CHANGE MIN Z SPEC @100MHZ	09/18/06	JRK				
F	UPDATE MIN Z SPEC @100 Mhz ADD REF #	03/05/04	JRK				
E	UPDATE FORMAT, Z SPECS ADD CURVE REM COATING SPECS, CHG P/N	05/23/03	JRK				
D	UPDATE PRINT FORMAT ADD DETAILS UPDATE WGT	03/01/02	JRK				
C	P/N WAS 200 ADD COATING SPECS	01/08/99	BAC	PROJECT/PART NUMBER: 28B0563-200		REV: H	DRAWN BY: DJB
B	UPDATED P/N FOR NEW CATALOG	12/01/95	JBE	DATE: 11/20/90	SCALE: 2 : 1	MATERIAL: Ferrite	
REV	DESCRIPTION	DATE	INT	CAD # 28B0563-200-H	TOOL # B0563		

## X-ON Electronics

Largest Supplier of Electrical and Electronic Components

*Click to view similar products for [Ferrite Cable Cores](#) category:*

*Click to view products by [Laird](#) manufacturer:*

Other Similar products are found below :

[FB73-422](#) [FX28R0984-2](#) [AB 3X2X3SM](#) [2643665709](#) [28R1127](#) [28R1260](#) [28R1575](#) [2631006302](#) [28R0760](#) [432703057171](#) [432202134321](#)  
[4327 030 11761](#) [SS7X4X3W](#) [4327 030 16141](#) [ASSE017-2](#) [2943666671](#) [4327 030 12611](#) [SM28R1575](#) [HFB123049-300](#) [HFB143064-100](#)  
[HFB143064-300](#) [HFB170070-000](#) [ETD29/16/10-3C94](#) [ETD29-3F3](#) [ETD39-3C94](#) [RFP1-40-28-M-A5](#) [RFP2-10-10-A5](#) [RFP2-25-12-A5](#)  
[RFS1-14-15-A5](#) [RFS1-15-12-A5](#) [RFS1-15-7-2-A5](#) [RFS1-6-8-A5](#) [RFS2-16-12-A5](#) [RFS2-27-12-A5](#) [RFS2-40-12-A5](#) [RFS2-9-12-2-A5](#) [RFS3-](#)  
[6-7-A5](#) [RKCF-05-A5](#) [RKCF-08-A5](#) [RKCF-13-A5](#) [74270036](#) [7427212](#) [B-20L-95B](#) [B66317G0000X127](#) [U100/57/25-3C90](#) [LFB127079-000](#)  
[LFB143064-000](#) [LFB159079-000](#) [LFB250150-000](#) [RRC-12-7-15-M](#)