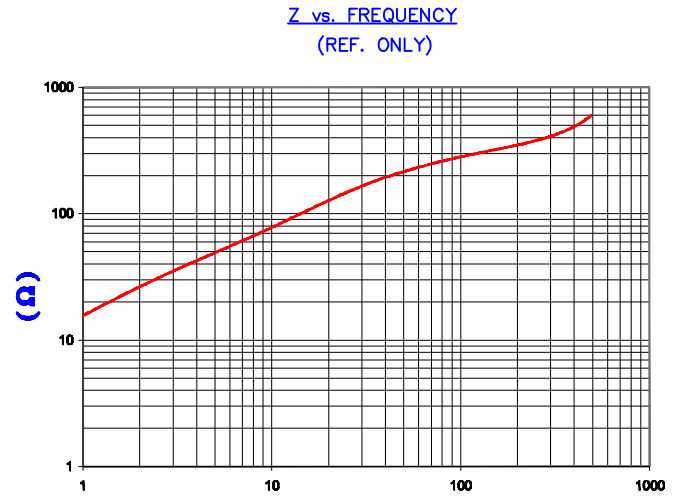


CHAMFER  
DETAIL A  
SCALE: 4:1

SECTION A-A  
SEE DETAIL "A"

**UNCONTROLLED  
DOCUMENT**

IMPEDANCE ( Z )			
Frequency	25 MHz	100 MHz	300 MHz
Nominal (REF)	150 Ω	280 Ω	400 Ω
Minimum	- Ω	224 Ω	- Ω

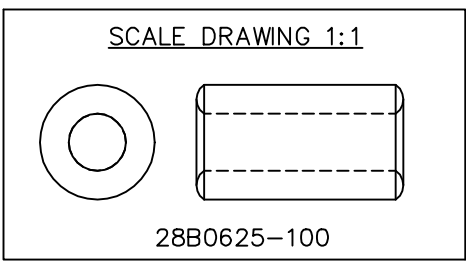


FREQUENCY (MHz)  
AGILENT E4991A Impedance/Material Analyzer  
HP 16092A Test Fixture REF #3188

FERRITE CORE DIMENSIONS (SPEC): mm/inches

A	15.88 [.625]	+	0.30 [.012]
B	7.87 [.310]	+	0.15 [.006]
C	28.58 [1.125]	+	0.76 [.030]

WEIGHT/1000 20.66 kgs [45.55 Lbs]



DIMENSIONS ARE IN mm [INCHES].				This print is the property of Laird Tech. and is loaned in confidence subject to return upon request and with the understanding that no copies shall be made without the written consent of Laird Tech. All rights to design or invention are reserved.							
REV	DESCRIPTION	DATE	INT								
K	UPDATE CO. LOGO CHG CHAMFER DESIGN	03/20/09	JRK	PROJECT/PART NUMBER: <b>28B0625-100</b>		REV	K	PART TYPE:	FERRITE CORE	DRAWN BY:	JAZ
J	UPDATE Z SPEC AND COMPANY LOGO	06/06/07	JRK			DATE:	09/24/93	SCALE:	2 : 1	MATERIAL:	Ni Zn Ferrite
H	UPDATE MIN Z SPEC @100 MHZ	09/26/06	JRK			CAD #	28B0625-100-K	TOOL #	B0625		
G	UPDATE Z SPEC ADD TEST REF#	12/06/04	JRK								
F	REMOVE COATINGS CHANGE P/N UPDATE PRINT FORMAT & Z SPECS	03/26/03	JRK								
E	UPDATE PRINT FORMAT FOR ELECTRONIC DATABASE ADD DETAIL "A", UPDATE Z SPEC FORMAT CORRECTED P/Ns ON CORE DIMENSIONS AND NOTES	02/26/01	TMB								
D	ADD WHITE COATING, UPDATE DIM FORMAT	04/03/00	JAJ								
REV	DESCRIPTION	DATE	INT								

## X-ON Electronics

Largest Supplier of Electrical and Electronic Components

*Click to view similar products for [Ferrite Cable Cores](#) category:*

*Click to view products by [Laird](#) manufacturer:*

Other Similar products are found below :

[FB73-422](#) [FX28R0984-2](#) [AB 3X2X3SM](#) [2643665709](#) [28R1127](#) [28R1260](#) [28R1575](#) [2631006302](#) [28R0760](#) [432703057171](#) [432202134321](#)  
[4327 030 11761](#) [SS7X4X3W](#) [4327 030 16141](#) [ASSE017-2](#) [2943666671](#) [4327 030 12611](#) [SM28R1575](#) [HFB123049-300](#) [HFB143064-100](#)  
[HFB143064-300](#) [HFB170070-000](#) [ETD29/16/10-3C94](#) [ETD29-3F3](#) [ETD39-3C94](#) [RFP1-40-28-M-A5](#) [RFP2-10-10-A5](#) [RFP2-25-12-A5](#)  
[RFS1-14-15-A5](#) [RFS1-15-12-A5](#) [RFS1-15-7-2-A5](#) [RFS1-6-8-A5](#) [RFS2-16-12-A5](#) [RFS2-27-12-A5](#) [RFS2-40-12-A5](#) [RFS2-9-12-2-A5](#) [RFS3-](#)  
[6-7-A5](#) [RKCF-05-A5](#) [RKCF-08-A5](#) [RKCF-13-A5](#) [74270036](#) [7427212](#) [B-20L-95B](#) [B66317G0000X127](#) [U100/57/25-3C90](#) [LFB127079-000](#)  
[LFB143064-000](#) [LFB159079-000](#) [LFB250150-000](#) [RRC-12-7-15-M](#)