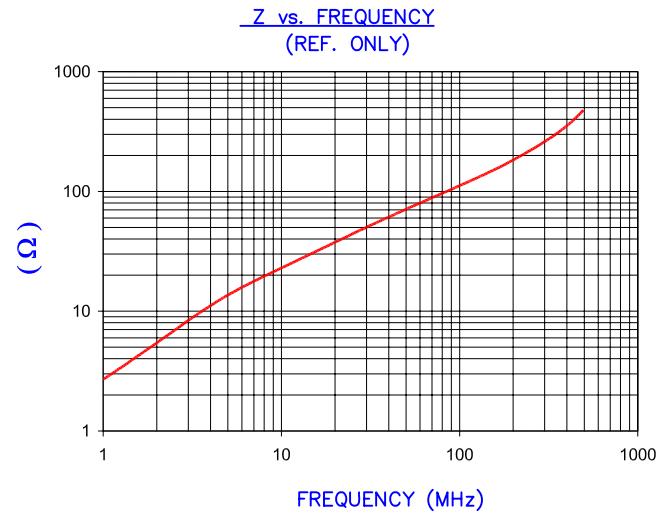
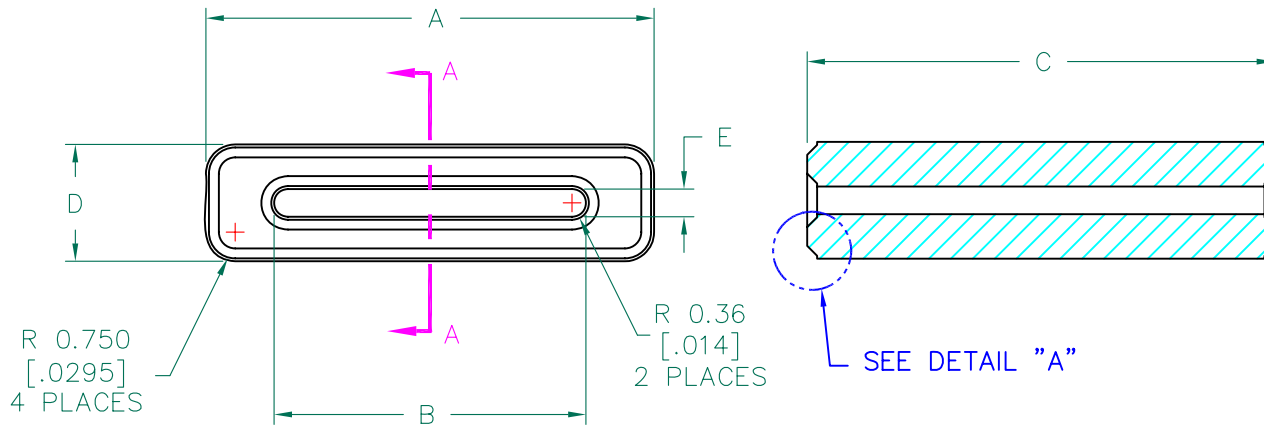


IMPEDANCE (Z)			
Frequency	25 MHz	100 MHz	300 MHz
Nominal (REF)	43 Ω	104 Ω	260 Ω
Minimum	- Ω	83 Ω	- Ω

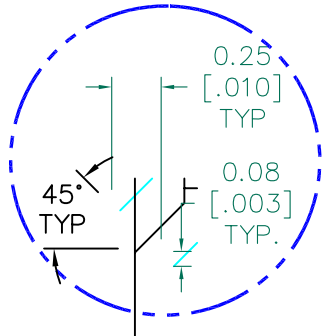


AGILENT E4991A Impedance/Material Analyzer  
HP 16092A Test Fixture, REF # 2960

FERRITE CORE DIMENSIONS (SPEC):

A	11.5	[.453]	+ 0.25	[.010]
B	8.00	[.315]	+ 0.20	[.008]
C	12.00	[.472]	+ 0.25	[.010]
D	3.00	[.118]	+ 0.20	[.008]
E	0.70	[.028]	+ 0.15	[.006]

WEIGHT/1000 1.66 kgs [3.67 Lbs]



**UNCONTROLLED DOCUMENT**

SCALE DRAWING 1:1

28R0453-200

DIMENSIONS ARE IN mm (INCHES).				This print is the property of Laird Tech. and is loaned in confidence subject to return upon request and with the understanding that no copies shall be made without the written consent of Laird Tech. All rights to design or invention are reserved.			
E	UPDATE COMPANY LOGO	04/11/11	Jcai				
D	UPDATE Z SPEC AND COMPANY LOGO	07/25/07	JRK				
C	UPDATE Z SPEC (MIN@100Mhz) ADD REF#	01/20/04	JRK				
B	UPDATE PRINT FORMAT, CURVE AND IMPEDANCE VALUES	05/02/03	JRK				
A	ORIGINAL DRAFT	10/15/02	JRK				
REV	DESCRIPTION	DATE	INT	PROJECT/PART NUMBER: <b>28R0453-200</b>	REV <b>E</b>	PART TYPE: <b>FERRITE RIBBON CORE</b>	DRAWN BY: <b>JRK</b>
				DATE: 10/15/02	SCALE: 5 : 1	SHEET: <b>FERRITE</b>	
				CAD # 28R0453-200-E	TOOL # R0453		

## X-ON Electronics

Largest Supplier of Electrical and Electronic Components

*Click to view similar products for [Ferrite Cable Cores](#) category:*

*Click to view products by [Laird](#) manufacturer:*

Other Similar products are found below :

[FB73-422](#) [FX28R0984-2](#) [AB 3X2X3SM](#) [2643665709](#) [28R1127](#) [28R1260](#) [28R1575](#) [2631006302](#) [28R0760](#) [432703057171](#) [432202134321](#)  
[4327 030 11761](#) [SS7X4X3W](#) [4327 030 16141](#) [ASSE017-2](#) [2943666671](#) [4327 030 12611](#) [SM28R1575](#) [HFB123049-300](#) [HFB143064-100](#)  
[HFB143064-300](#) [HFB170070-000](#) [ETD29/16/10-3C94](#) [ETD29-3F3](#) [ETD39-3C94](#) [RFP1-40-28-M-A5](#) [RFP2-10-10-A5](#) [RFP2-25-12-A5](#)  
[RFS1-14-15-A5](#) [RFS1-15-12-A5](#) [RFS1-15-7-2-A5](#) [RFS1-6-8-A5](#) [RFS2-16-12-A5](#) [RFS2-27-12-A5](#) [RFS2-40-12-A5](#) [RFS2-9-12-2-A5](#) [RFS3-](#)  
[6-7-A5](#) [RKCF-05-A5](#) [RKCF-08-A5](#) [RKCF-13-A5](#) [74270036](#) [7427212](#) [B-20L-95B](#) [B66317G0000X127](#) [U100/57/25-3C90](#) [LFB127079-000](#)  
[LFB143064-000](#) [LFB159079-000](#) [LFB250150-000](#) [RRC-12-7-15-M](#)