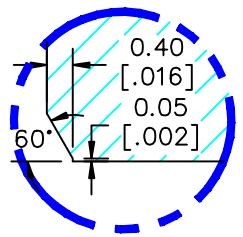
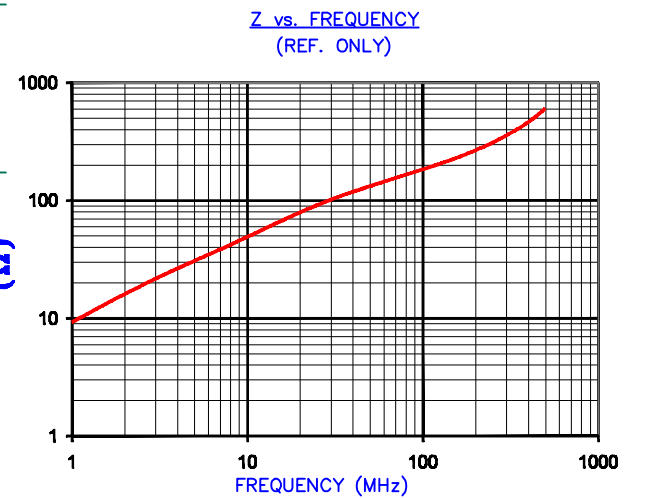


IMPEDANCE (Z)			
Frequency	25 MHz	100 MHz	300 MHz
Nominal (REF)	93 Ω	187 Ω	356 Ω
Minimum	- Ω	150 Ω	- Ω



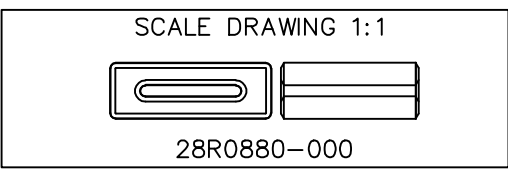
DETAIL "A"
CHAMFER
SCALE=9:1

UNCONTROLLED DOCUMENT

FERRITE CORE DIMENSIONS (SPEC): mm [in]

A	22.35 [.880]	+ 0.51 [.020]
B	14.00 [.551]	+ 0.25 [.010]
C	19.05 [.750]	+ 0.51 [.020]
D	7.75 [.305]	+ 0.30 [.012]
E	1.50 [.059]	+ 0.25 [.010]

WEIGHT/1000 14.25 kgs [31.42Lbs]



DIMENSIONS ARE IN mm[INCHES].				This print is the property of Laird Tech. and is loaned in confidence subject to return upon request and with the understanding that no copies shall be made without the written consent of Laird Tech. All rights to design or invention are reserved.				
REV	DESCRIPTION	DATE	INT					
P	CHANGED DETAIL A AND UPDATE TEMPLATE	03/02/12	Jcai	PROJECT/PART NUMBER: 28R0880-000		REV P	PART TYPE: FERRITE RIBBON CORE	DRAWN BY: BAC
N	UPDATE Z SPECS & COMPANY LOGO	07/27/07	JRK					
M	UPDATE Z SPECS ADJUST DIM C & D TOL PER ENGR & ADD TEST REF. #	11/16/04	TMB					
L	UPDATE PRINT FORMAT CHANGE CURVE							
L	FORMAT ADD IMPEDANCE (Z) VALUES TO UPPER RIGHT CORNER OF PRINT	03/06/03	TMB					
K	UPDATE TO NEW CNZ FORMAT, ADD Z CURVE	06/19/02	JRK					
J	UPDATE Z SPECS	11/12/01	JRK					
H	UPDATE PRINT FOR ELECTRONIC DATABASE	11/09/00	JAJ					
REV	DESCRIPTION	DATE	INT					

DATE: 04/15/92
 SCALE: 3 : 1
 MATERIAL: Ferrite
 CAD # 28R0880-000-P
 TOOL # R0880

X-ON Electronics

Largest Supplier of Electrical and Electronic Components

Click to view similar products for [Ferrite Cable Cores](#) category:

Click to view products by [Laird](#) manufacturer:

Other Similar products are found below :

[FB73-422](#) [FX28R0984-2](#) [AB 3X2X3SM](#) [2643665709](#) [28R1127](#) [28R1260](#) [28R1575](#) [2631006302](#) [28R0760](#) [432703057171](#) [432202134321](#)
[4327 030 11761](#) [SS7X4X3W](#) [4327 030 16141](#) [ASSE017-2](#) [2943666671](#) [4327 030 12611](#) [SM28R1575](#) [HFB123049-300](#) [HFB143064-100](#)
[HFB143064-300](#) [HFB170070-000](#) [ETD29/16/10-3C94](#) [ETD29-3F3](#) [ETD39-3C94](#) [RFP1-40-28-M-A5](#) [RFP2-10-10-A5](#) [RFP2-25-12-A5](#)
[RFS1-14-15-A5](#) [RFS1-15-12-A5](#) [RFS1-15-7-2-A5](#) [RFS1-6-8-A5](#) [RFS2-16-12-A5](#) [RFS2-27-12-A5](#) [RFS2-40-12-A5](#) [RFS2-9-12-2-A5](#) [RFS3-](#)
[6-7-A5](#) [RKCF-05-A5](#) [RKCF-08-A5](#) [RKCF-13-A5](#) [74270036](#) [7427212](#) [B-20L-95B](#) [B66317G0000X127](#) [U100/57/25-3C90](#) [LFB127079-000](#)
[LFB143064-000](#) [LFB159079-000](#) [LFB250150-000](#) [RRC-12-7-15-M](#)