

DETAIL "A"
CHAMFER
SCALE=8:1

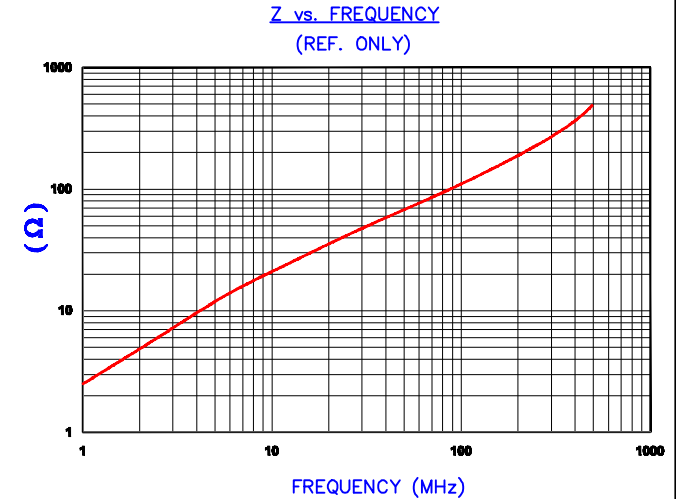
UNCONTROLLED DOCUMENT

NOTES: UNLESS OTHERWISE SPECIFIED

1. PARTS NEED TO BE CLEANED WITH NO FERRITE RESIDUE LEFT ON THE SURFACE OF THE PARTS.

THIS MAY REQUIRE SPECIAL HANDLING, PACKAGING, WASHING, OR WIPING.

IMPEDANCE (Z)			
Frequency	25 MHz	100 MHz	300 MHz
Nominal (REF)	40 Ω	110 Ω	265 Ω
Minimum	- Ω	88 Ω	- Ω



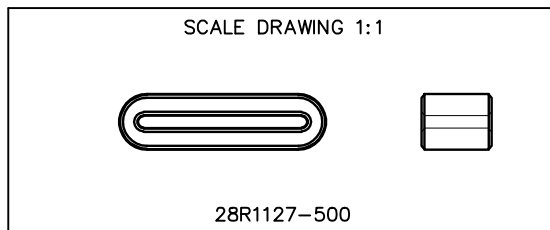
AGILENT E4991A Impedance/Material Analyzer
HP 16082A Test Fixture, REF #3843

FERRITE CORE DIMENSIONS (SPEC):mm[Inches]

A	28.58 [1.125]	+	0.50 [.020]
B	23.50 [.925]	+	0.50 [.020]
C	9.70 [.382]	+	0.20 [.008]
D	7.70 [.303]	+	0.50 [.020]
E	1.70 [.067]	+	0.51 [.020]
		-	0.38 [.015]

WEIGHT/1000 7.92 kgs [17.46 Lbs]

DIMENSIONS ARE IN mm[INCHES].				THIS DOCUMENT CONTAINS INFORMATION WHICH IS PROPRIETARY AND CONFIDENTIAL TO STEWARD. NO PRODUCTION OR PUBLICATION OF THIS DOCUMENT IN WHOLE OR IN PART SHALL BE MADE WITHOUT WRITTEN AUTHORIZATION FROM STEWARD.			
G	UPDATE MIN Z SPEC AND COMPANY LOGO	07/27/07	JRK				
F	ADD NOTE # 1	03/16/06	JRK				
E	UPDATE Z SPECS & CURVE, ADD REF# TO CURVE	01/19/04	JRK	PROJECT/PART NUMBER:	REV	PART TYPE:	DRAWN BY:
D	UPDATE ELECT SPECS & CURVE UPDATE FORMAT REM NOTE 1 CHG TOLS ON E	02/25/03	JRK	28R1127-500	G	FERRITE RIBBON CORE	JRK
C	UPDATE TO CNZ FORMAT ADD Z CURVE	06/20/02	JRK	DATE:	SCALE:	MATERIAL:	
B	UPDATE Z SPECS, REM MAX, ADD NOTE	03/13/02	JRK	04/18/00	2 : 1	NiZn Ferrite	
A	ORIGINAL DRAFT	05/02/01	JRK	CAD #	TOOL #		
REV	DESCRIPTION	DATE	INT	28R1127-500-G	R1127		



X-ON Electronics

Largest Supplier of Electrical and Electronic Components

Click to view similar products for [Ferrite Cable Cores](#) category:

Click to view products by [Laird](#) manufacturer:

Other Similar products are found below :

[FB73-422](#) [FX28R0984-2](#) [AB 3X2X3SM](#) [2643665709](#) [28R1127](#) [28R1260](#) [28R1575](#) [2631006302](#) [28R0760](#) [432703057171](#) [432202134321](#)
[4327 030 11761](#) [SS7X4X3W](#) [4327 030 16141](#) [ASSE017-2](#) [2943666671](#) [4327 030 12611](#) [SM28R1575](#) [HFB123049-300](#) [HFB143064-100](#)
[HFB143064-300](#) [HFB170070-000](#) [ETD29/16/10-3C94](#) [ETD29-3F3](#) [ETD39-3C94](#) [RFP1-40-28-M-A5](#) [RFP2-10-10-A5](#) [RFP2-25-12-A5](#)
[RFS1-14-15-A5](#) [RFS1-15-12-A5](#) [RFS1-15-7-2-A5](#) [RFS1-6-8-A5](#) [RFS2-16-12-A5](#) [RFS2-27-12-A5](#) [RFS2-40-12-A5](#) [RFS2-9-12-2-A5](#) [RFS3-](#)
[6-7-A5](#) [RKCF-05-A5](#) [RKCF-08-A5](#) [RKCF-13-A5](#) [74270036](#) [7427212](#) [B-20L-95B](#) [B66317G0000X127](#) [U100/57/25-3C90](#) [LFB127079-000](#)
[LFB143064-000](#) [LFB159079-000](#) [LFB250150-000](#) [RRC-12-7-15-M](#)