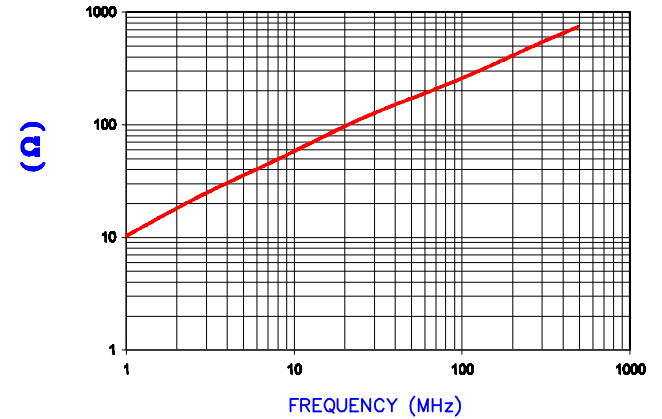


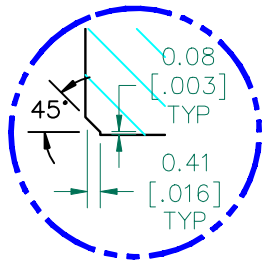
IMPEDANCE (Z)			
Frequency	25 MHz	100 MHz	300 MHz
Nominal (REF)	115 Ω	260 Ω	530 Ω
Minimum	- Ω	208 Ω	- Ω

Z vs. FREQUENCY
(REF. ONLY)



AGILENT E4991A Impedance/Material Analyzer
HP 16082A Test Fixture REF #2978

UNCONTROLLED DOCUMENT

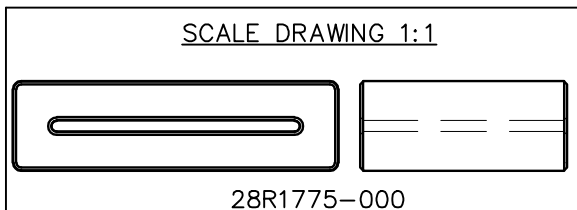



DETAIL A
SCALE: 5:1

FERRITE CORE DIMENSIONS (SPEC):mm[Inches]

A	45.08 [1.775]	±	0.89 [.035]
B	34.42 [1.355]	±	0.64 [.025]
C	28.58 [1.125]	±	0.64 [.025]
D	12.45 [.490]	±	0.51 [.020]
E	1.52 [.060]	±	0.51 [.020]

WEIGHT/1000 71.54 kgs [157.71 Lbs]



DIMENSIONS ARE IN mm [INCHES].				THIS DOCUMENT CONTAINS INFORMATION WHICH IS PROPRIETARY AND CONFIDENTIAL TO STEWARD. NO PRODUCTION OR PUBLICATION OF THIS DOCUMENT IN WHOLE OR IN PART SHALL BE MADE WITHOUT WRITTEN AUTHORIZATION FROM STEWARD.			
G	UPDATE MIN Z SPECS & COMPANY LOGO	07/27/07	TMB				
F	UPDATE MIN Z SPEC @100mhz ADD REF #	02/10/04	JRK				
E	CHANGE CHAMFER FLAT FROM 009 UPDATE FORMAT & Z SPECS	02/27/03	JRK				
D	UPDATE TO CNZ FORMAT ADD Z CURVE	07/08/02	JRK				
C	UPDATE PRINT FORMAT ADD DETAIL A	02/26/02	JRK				
B	UPDATED P/N FOR NEW CATALOG	09/26/95	JBE	PROJECT/PART NUMBER:	REV	PART TYPE:	DRAWN BY:
A	ORIGINAL DRAFT	09/30/92	LNK	28R1775-000	G	FERRITE RIBBON CORE	LNK
REV	DESCRIPTION	DATE	INT	DATE:	SCALE:	MATERIAL:	
				09/30/92	1.5:1	NiZn FERRITE	
				CAD #	TOOL #		
				28R1775-000-G	R1775		

X-ON Electronics

Largest Supplier of Electrical and Electronic Components

Click to view similar products for [Ferrite Cable Cores](#) category:

Click to view products by [Laird](#) manufacturer:

Other Similar products are found below :

[FB73-422](#) [FX28R0984-2](#) [AB 3X2X3SM](#) [2643665709](#) [28R1127](#) [28R1260](#) [28R1575](#) [2631006302](#) [28R0760](#) [432703057171](#) [432202134321](#)
[4327 030 11761](#) [SS7X4X3W](#) [4327 030 16141](#) [ASSE017-2](#) [2943666671](#) [4327 030 12611](#) [SM28R1575](#) [HFB123049-300](#) [HFB143064-100](#)
[HFB143064-300](#) [HFB170070-000](#) [ETD29/16/10-3C94](#) [ETD29-3F3](#) [ETD39-3C94](#) [RFP1-40-28-M-A5](#) [RFP2-10-10-A5](#) [RFP2-25-12-A5](#)
[RFS1-14-15-A5](#) [RFS1-15-12-A5](#) [RFS1-15-7-2-A5](#) [RFS1-6-8-A5](#) [RFS2-16-12-A5](#) [RFS2-27-12-A5](#) [RFS2-40-12-A5](#) [RFS2-9-12-2-A5](#) [RFS3-](#)
[6-7-A5](#) [RKCF-05-A5](#) [RKCF-08-A5](#) [RKCF-13-A5](#) [74270036](#) [7427212](#) [B-20L-95B](#) [B66317G0000X127](#) [U100/57/25-3C90](#) [LFB127079-000](#)
[LFB143064-000](#) [LFB159079-000](#) [LFB250150-000](#) [RRC-12-7-15-M](#)