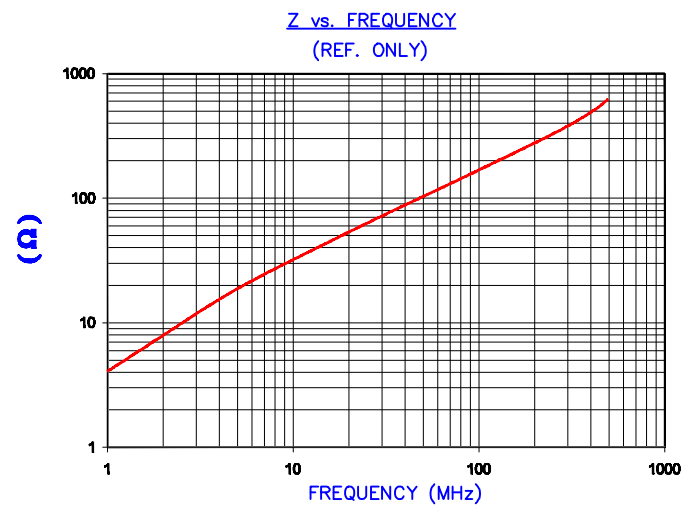


**UNCONTROLLED DOCUMENT**

IMPEDANCE (Z)			
Frequency	25 MHz	100 MHz	300 MHz
Nominal (REF)	62 Ω	170 Ω	370 Ω
Minimum	- Ω	136 Ω	- Ω

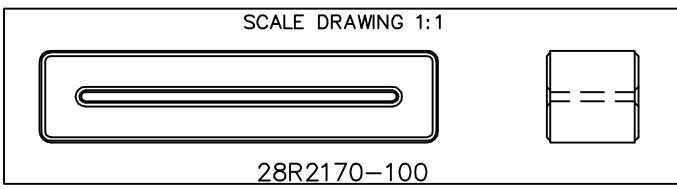


AGILENT E4991A Impedance/Material Analyzer  
HP 16092A Test Fixture, REF #3025

FERRITE CORE DIMENSIONS (SPEC):mm[Inches]

A	55.12 [2.170]	+	0.80 [.031]
B	43.69 [1.720]	+	0.80 [.031]
C	12.70 [.500]	+	0.38 [.015]
D	12.70 [.500]	+	0.51 [.020]
E	1.27 [.050]	-	0.20 [.008]

WEIGHT/1000 39.87 kgs 87.90 Lbs



DIMENSIONS ARE IN mm (INCHES).				This print is the property of Laird Tech. and is loaned in confidence subject to return upon request and with the understanding that no copies shall be made without the written consent of Laird Tech. All rights to design or invention are reserved.		Laird TECHNOLOGIES			
REV	DESCRIPTION	DATE	INT						
I	UPDATE TEMPLATE AND A, B TOLERANCE	03/31/11	Jcal	PROJECT/PART NUMBER: <b>28R2170-100</b>		REV	I	PART TYPE: CNZ RIBBON CORE	DRAWN BY: JBE
H	UPDATE MIN Z SPECS & COMPANY LOGO	07/27/07	TMB						
G	UPDATE MIN Z SPECS @100 Mhz ADD REF#	02/19/04	JRK						
F	UPDATE TO CNZ FORMAT ADD Z CURVE UPDATE Z SPECS, CHANGE E TOLERANCE	02/28/03	JRK						
E	UPDATE PRINT FOR ELECTRONIC DATABASE	01/10/01	JAJ						
D	UPDATED Z SPECS	07/30/96	BAC						
C	UPDATED P/N FOR NEW CATALOG	11/10/95	JBE						
B	STANDARD FORMAT	12/14/94	JBE						
REV	DESCRIPTION	DATE	INT						
						DATE:	12/14/94	SCALE:	1.5 : 1
				CAD #	28R2170-100-I	TOOL #	R2170		

## X-ON Electronics

Largest Supplier of Electrical and Electronic Components

*Click to view similar products for [Ferrite Cable Cores](#) category:*

*Click to view products by [Laird](#) manufacturer:*

Other Similar products are found below :

[FB73-422](#) [FX28R0984-2](#) [AB 3X2X3SM](#) [2643665709](#) [28R1127](#) [28R1260](#) [28R1575](#) [2631006302](#) [28R0760](#) [432703057171](#) [432202134321](#)  
[4327 030 11761](#) [SS7X4X3W](#) [4327 030 16141](#) [ASSE017-2](#) [2943666671](#) [4327 030 12611](#) [SM28R1575](#) [HFB123049-300](#) [HFB143064-100](#)  
[HFB143064-300](#) [HFB170070-000](#) [ETD29/16/10-3C94](#) [ETD29-3F3](#) [ETD39-3C94](#) [RFP1-40-28-M-A5](#) [RFP2-10-10-A5](#) [RFP2-25-12-A5](#)  
[RFS1-14-15-A5](#) [RFS1-15-12-A5](#) [RFS1-15-7-2-A5](#) [RFS1-6-8-A5](#) [RFS2-16-12-A5](#) [RFS2-27-12-A5](#) [RFS2-40-12-A5](#) [RFS2-9-12-2-A5](#) [RFS3-](#)  
[6-7-A5](#) [RKCF-05-A5](#) [RKCF-08-A5](#) [RKCF-13-A5](#) [74270036](#) [7427212](#) [B-20L-95B](#) [B66317G0000X127](#) [U100/57/25-3C90](#) [LFB127079-000](#)  
[LFB143064-000](#) [LFB159079-000](#) [LFB250150-000](#) [RRC-12-7-15-M](#)