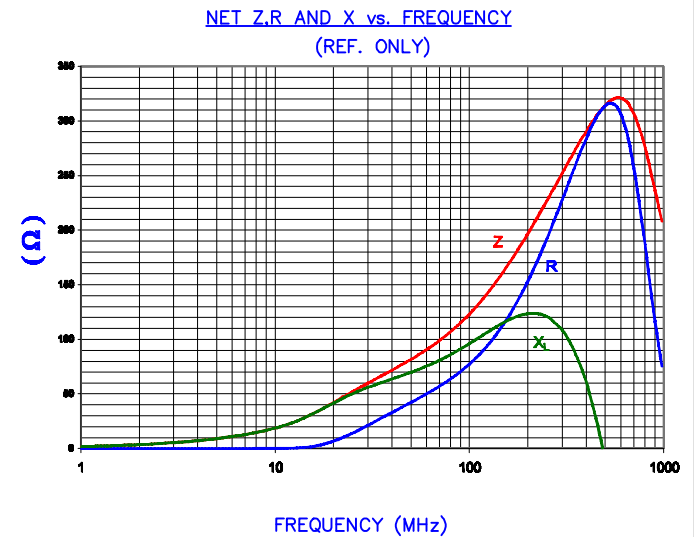


CORE DIMENSIONS:

A	25.91 [1.020]	+	0.46 [.018]
B	13.06 [.514]	+	0.25 [.010]
C	28.58 [1.125]	+	0.64 [.025]
D	12.95 [.510]	+	0.18 [.007]

UNCONTROLLED DOCUMENT

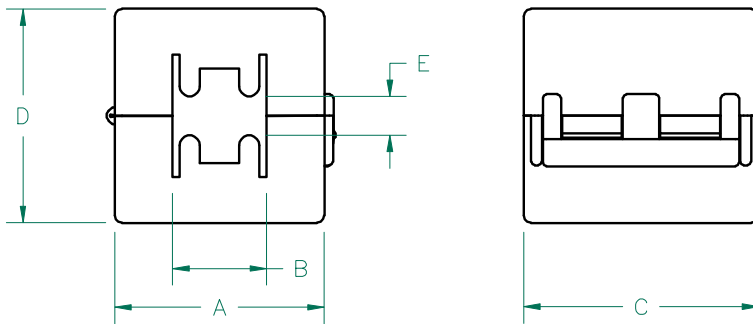
NET IMPEDANCE (Z)			
Frequency	300 MHz	500 MHz	1 GHz
Nominal (REF)	250 Ω	315 Ω	200 Ω
Minimum	- Ω	252 Ω	- Ω



AGILENT E4991A Impedance/Material Analyzer
HP 16092A-Test Fixture REF2864

NOTES:

- ASSEMBLED PART #: HFA259131-0A2.
- CASE COLOR: BLACK.



CASE DIMENSIONS:

A	29.00 [1.142]	+	REF.
B	13.00 [.512]	+	REF.
C	32.50 [1.280]	+	REF.
D	29.62 [1.166]	+	REF.
E	5.64 [.222]	+	REF.

DIMENSIONS ARE IN mm[INCHES].				THIS DOCUMENT CONTAINS INFORMATION WHICH IS PROPRIETARY AND CONFIDENTIAL TO STEWARD. NO PRODUCTION OR PUBLICATION OF THIS DOCUMENT IN WHOLE OR IN PART SHALL BE MADE WITHOUT WRITTEN AUTHORIZATION FROM STEWARD.					
<p>CHANGE CASE TOLERANCES TO REF. UP-DATE "A"&"D" DIM ON CASE AND ADD E DIM REMOVE CORE & CASE P/N REF. REVISE CORE DIM "B"& TOLERANCE & CORE DIM "C" TOLERANCE REVISE NOTES</p>				10/30/06	TMB	<p>Steward</p>			
				PROJECT/PART NUMBER: HFA259131-0A2				REV B	PART TYPE: FERRITE SNAP-ON
A	ORIGINAL DRAFT	09/03/04	JRK	DATE:	09/03/04	SCALE:	NTS	MATERIAL:	NiZn Ferrite
REV	DESCRIPTION	DATE	INT	CAD #	HFA259131-0A2-B	TOOL #			

X-ON Electronics

Largest Supplier of Electrical and Electronic Components

Click to view similar products for [Ferrite Clamp On Cores](#) category:

Click to view products by [Laird](#) manufacturer:

Other Similar products are found below :

[CS28B0984](#) [CS28B1501](#) [CV28B1642](#) [RA33B4340](#) [IL25B0642K](#) [SA28B0121](#) [SS33B2033](#) [HI28B2039](#) [RA33B2480](#) [TC28B0805](#)
[432703037561](#) [CF28B0642](#) [SS33B2035](#) [TC28B2000](#) [CF28B1937](#) [SS20B2037](#) [SS33B2032](#) [TC20B1500](#) [SS25B2032](#) [SS20B2034](#)
[PM28B0686](#) [CW28B0642](#) [CV28B1984](#) [RA20B1729](#) [CS33B4000](#) [TC33B0805](#) [SS33B2040](#) [TC28B1501](#) [AS33B2036](#) [AS25B2032](#)
[TC28B0550](#) [CS25B2000](#) [AS25B2036](#) [AS28B2027](#) [CS33B2000](#) [74271111](#) [74271132](#) [74271132S](#) [74271142](#) [74271222](#) [7427151](#) [74271622S](#)
[RRH-100-50-100](#) [RRH-105-55-200](#) [RRH-115-43-260](#) [RRH-142-70-285](#) [RRH-175-107-285](#) [RRH-186-102-250](#) [RRH-186-102-286](#) [RRH-259-128-286](#)