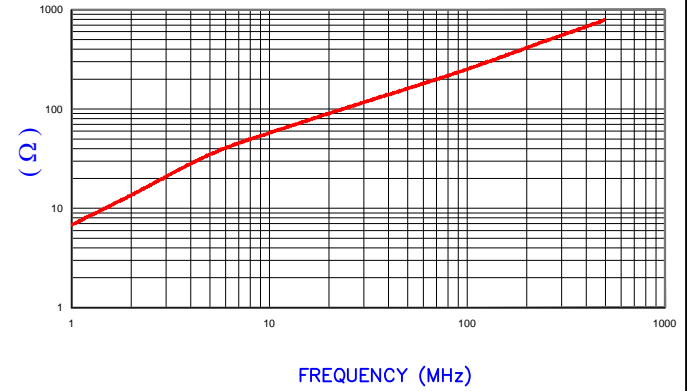
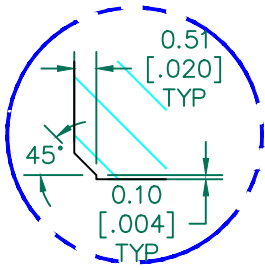


IMPEDANCE (Z)			
Frequency	25 MHz	100 MHz	300 MHz
Nominal (REF)	103 Ω	252 Ω	545 Ω
Minimum	- Ω	202 Ω	- Ω

Z vs. FREQUENCY
(REF. ONLY)



AGILENT E4991A Impedance/Material Analyzer
HP 16092A Test Fixture, REF 4256



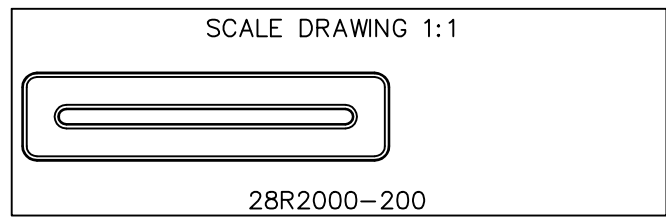
FERRITE CORE DIMENSIONS (SPEC): mm [Inches]

A	50.80 [2.000]	±	0.90 [.035]
B	40.60 [1.598]	±	0.70 [.028]
C	28.00 [1.102]	±	0.65 [.026]
D	12.20 [.480]		+ 0.40 [.016] - 0.20 [.008]
E	2.00 [.079]		+ 0.40 [.016] - 0.20 [.008]

WEIGHT/1000 74.17 kgs [163.52 Lbs]

NOTES: UNLESS OTHERWISE SPECIFIED

1. COSMETIC SPECIFICATION REFER TO WI-QA-038.



DIMENSIONS ARE IN mm [INCHES].				This print is the property of Laird Tech. and is loaned in confidence subject to return upon request and with the understanding that no copies shall be made without the written consent of Laird Tech. All rights to design or invention are reserved.		Laird™	
D	UPDATE COMPANY LOGO	01/07/13	QIU	PROJECT/PART NUMBER:	REV	DRAWN BY:	
C	UPDATE MIN Z SPECS & COMPANY LOGO	07/27/07	TMB	28R2000-200	D	JRK	
B	ADD Z SPECS AND CURVE	08/26/04	JRK	DATE:	SCALE:	MATERIAL:	
A	ORIGINAL DRAFT	06/28/04	JRK	06/28/04	1.5 : 1	FERRITE	
REV	DESCRIPTION	DATE	INT	CAD #	TOOL #		
				28R2000-200-D	R2000		

X-ON Electronics

Largest Supplier of Electrical and Electronic Components

Click to view similar products for [Ferrite Cable Cores](#) category:

Click to view products by [Laird Connectivity](#) manufacturer:

Other Similar products are found below :

[FB73-422](#) [FX28R0984-0](#) [FX28R0984-2](#) [AB 3X2X3SM](#) [2643164251](#) [2643665709](#) [2661626402](#) [28R1127](#) [28R1260](#) [28R1575](#) [SM28R0760](#)
[2631006302](#) [2643165451](#) [2643178351](#) [28R0760](#) [74278043](#) [SS7X4X3W](#) [4327 030](#) [16141](#) [2643103102](#) [2643164151](#) [2943666671](#)
[2643163851](#) [28B1101](#) [SM28R1575](#) [2643625902](#) [2643626102](#) [2643480009](#) [2673069901](#) [28B0268-000](#) [28B0375-100](#) [28B0375-300](#)
[28B0375-400](#) [28B0500-100](#) [28B0562-000](#) [28B0562-200](#) [28B0625-100](#) [28B1020-100](#) [28B1417-200](#) [28R1101-000](#) [28R1102-100](#) [28R1127-](#)
[500](#) [28R0453-200](#) [28R0669-000](#) [28R0756-200](#) [28R0480-000](#) [28R1127-000](#) [28R0984-200](#) [28R2170-100](#) [28R0592-010](#) [28R0756-000](#)