

Mounting Bracket Kit for SecureLinx Spider™ (083-015-R)

A versatile mounting bracket and screws are supplied to assist in easily installing and mounting a single Spider into a server rack in various orientations (e.g., horizontal or vertical).

The kit includes:

- One (1) 4.0" x 1-3/4" x 1/4" bracket
- Two (2) 1/2" long, 10-32 stainless steel Phillips-head screws



Once the mounting bracket is installed in the rack, the Spider can be easily and securely attached to the bracket's elevated mounting posts, and easily removed if necessary.

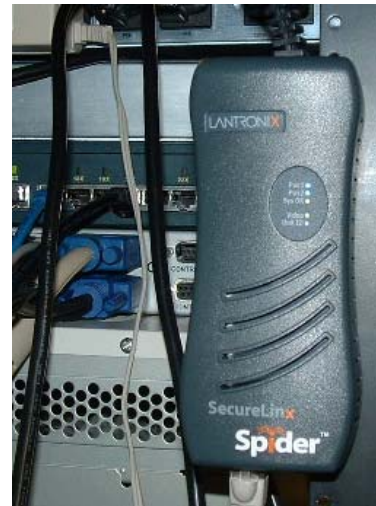
There are 3 easy steps to install the mounting bracket and Spider into a server rack:



1. Mount the bracket with a Phillips-head screwdriver



2. Attach the Spider to the bracket's mounting posts



3. Connect cables and the Spider is ready for use!

Lantronix Part Number	Description
083-015-R	Mounting Bracket Kit for Spider



The bracket kit is included in the box with Spiders that ship with v2.0 firmware and later. For earlier versions of Spider, the mounting kit is sold separately. For additional information, contact Lantronix Sales at **800-422-7055**, or for technical questions contact Lantronix Technical Support at **800-422-7044**.

X-ON Electronics

Largest Supplier of Electrical and Electronic Components

Click to view similar products for [Mounting Fixings](#) category:

Click to view products by [Lantronix](#) manufacturer:

Other Similar products are found below :

[5912235-1 REV](#) - [5912235-2](#) [007541](#) [627](#) [M3783-7001](#) [71-074914-006](#) [71-441549-19S](#) [75-69211-3P](#) [75-69214-6P](#) [75-69224-28P](#) [75-69224-5S](#) [75-69232-17S](#) [7717-8DAP](#) [85047GULPT](#) [85054GBEPR](#) [FPK-02-R10](#) [PMS27488-001-01](#) [1-18023-0](#) [H-118-2](#) [D83999/20WC8SN](#) [DB1](#) [1302030464](#) [DC31-14W19PN](#) [DC31-14W19PW](#) [DC31E14-19PX](#) [DC31E14-19PY](#) [DC32-18W32SN](#) [DC36-18-32SW](#) [DC36-18-32SX](#) [DC37-14-19PW](#) [DC37-22-21PX](#) [DC37E14-19PN](#) [DC37E14-19PX](#) [DC37E14-19PY](#) [1302010957](#) [1302263564](#) [1302340393](#) [1404-0016-78](#) [14540](#) [149331-9811](#) [1561-60](#) [1566](#) [1566](#) [17542](#) [HS5659MB98PN](#) [NT20SATT01](#) [201C5058-01-201 REV E](#) [22594-8](#) [KBB-141](#) [915060](#)