


	DATA SHEET	
Valid from: 18-12-2018	FLEXIMARK® Plier FL52ERA FL52A	

Produce your own cable and component marking on site.
 Cut your holders into desired length.
 Punch both holes for cable tie mounting and center hole for screw mounting.
 Used for producing FLEXIMARK® Character holders.



Technical data FLEXIMARK® Plier FL52ERA:

Material:	Polyamide 6 Details: steel and brass
Handles:	Glass-reinforced polyamide
Hole punch:	Steel
Punch guides:	Chromated brass
Storage:	Cool and dry in original packaging

Technical data FLEXIMARK® Plier FL52A:


Material:	Polyamide 6 Details: steel and brass
Handles:	Glass-reinforced polyamide
Hole punch:	Steel
Punch guides:	Chromated brass
Storage:	Cool and dry in original packaging

Other product data:

ETIM Classification: EC002248 Mounting for labelling material

Advantages:

Flexible and durable marking when you need it.
 Easy marking on site together with FLEXIMARK® Character holders.
 Cable and component marking for indoor and outdoor.
 Cut you holders and punch holes for cable ties or screws easily on site.
 Punch both holes for cable ties at the same time.

	DATA SHEET	
Valid from: 18-12-2018	FLEXIMARK® Plier FL52ERA FL52A	

Product data:

Part no.	Article designation	Punch both holes for cable ties (size holder mm)	Punch center hole	Content (unit)	PU
83252047	FLEXIMARK Plier FL52ERA	6-12	Yes	1	1
83252024	FLEXIMARK Plier FL52A	19	Yes	1	1

Product data spare parts:

Part no.	Article designation	Content (unit)	PU
83252049	FLEXIMARK Extra knife FL52ERA	1	1
83252052	FLEXIMARK Extra knife FL52A	1	1

Related products:

With the FLEXIMARK® Plier for Character holders PTE, PTES you can both cut your holders into desired length, punch both holes for cable tie mounting and center hole for screw mounting. Within FLEXIMARK® Marking systems assortment we offer character holders in different lengths and widths.

DATA SHEET



Valid from:
18-12-2018

FLEXIMARK® Plier FL52ERA FL52A

Delivery:

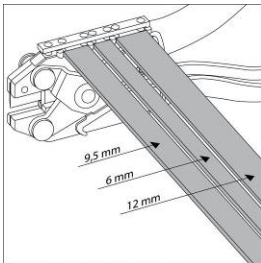
FLEXIMARK® Pliers are delivered in package separately.

Mounting:

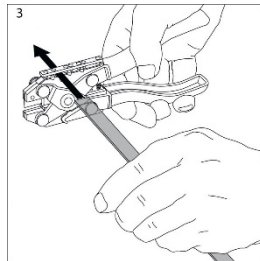
FLEXIMARK® Character holders can be used for both cable and component marking. You simply punch the holes for cable ties or screws as you need them.

1. With FLEXIMARK® Plier FL52ERA, you can punch both holes for cable ties on holders with a width of 6-12mm.

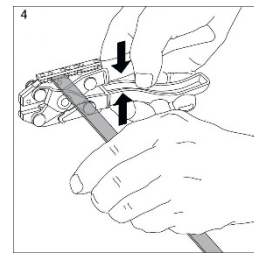
1. With FLEXIMARK® Plier FL52A you can punch both holes for cable ties on character holders with a width of 19mm



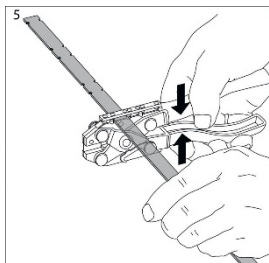
2. Insert the character holder into the area for punching. Note: Choose the right area for the right width of character holders.



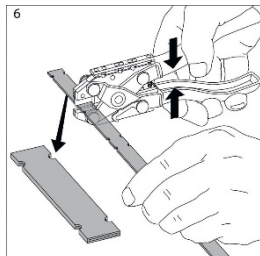
3. Punch both holes by squeezing the handles



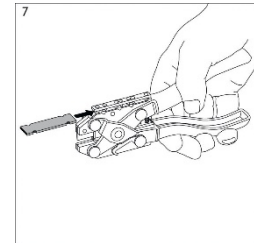
4. Push the holder through the hole for punching the following holes for cable tie mounting



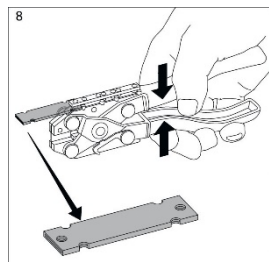
5. Use the front cutting part to cut the punched holders



6. Use the front punching part for punching center holes for screw mounting



7. Press the handles for punching center holes.



8. Mount your holder together with cable ties or screw



Foot note:

Photographs are not to scale and do not represent detailed images of the respective products.

X-ON Electronics

Largest Supplier of Electrical and Electronic Components

Click to view similar products for [Pliers & Tweezers](#) category:

Click to view products by [Lapp Kabel](#) manufacturer:

Other Similar products are found below :

[0031](#) [32750](#) [PN-5050/38D](#) [PG-TP-30D](#) [PG-DP-18-N](#) [G77015](#) [4-1532129-2](#) [77 12 115](#) [0037](#) [T0058765801](#) [571](#) [76C](#) [37 31 125](#) [RX 8130](#)
[37 33 125](#) [DRP10N](#) [32 11 135](#) [36 12 130](#) [0036](#) [64 11 115](#) [0032](#) [6231-08](#) [PN 5050/19D](#) [PNI 5000](#) [TP 5000/15D](#) [TR 30 15 V](#) [TR 5000 PR](#)
[TR 58 R A D](#) [00 20 08 US2](#) [13 01 614](#) [87 28 250 SBA](#) [INCP8](#) [30993](#) [011820101](#) [011830101](#) [011910110](#) [003780032](#) [003780041](#)
[134-69-160](#) [134-69-180](#) [135-49-VDE-190](#) [137-49-VDE-180](#) [137-49-VDE-200](#) [137-49-VDE-240](#) [137-69-180](#) [137-69-200](#) [137-69-240](#) [138-](#)
[49-VDE-200](#) [138-69-200](#) [140-49-VDE-170](#)