


|                           |                                       |   |
|---------------------------|---------------------------------------|---|
|                           | <b>DATA SHEET</b>                     |  |
| Valid from:<br>18-12-2018 | <b>FLEXIMARK® Plier FL52ERA FL52A</b> |   |

Produce your own cable and component marking on site.  
 Cut your holders into desired length.  
 Punch both holes for cable tie mounting and center hole for screw mounting.  
 Used for producing FLEXIMARK® Character holders.



**Technical data FLEXIMARK® Plier FL52ERA:**

|               |                                      |
|---------------|--------------------------------------|
| Material:     | Polyamide 6 Details: steel and brass |
| Handles:      | Glass-reinforced polyamide           |
| Hole punch:   | Steel                                |
| Punch guides: | Chromated brass                      |
| Storage:      | Cool and dry in original packaging   |

**Technical data FLEXIMARK® Plier FL52A:**


|               |                                      |
|---------------|--------------------------------------|
| Material:     | Polyamide 6 Details: steel and brass |
| Handles:      | Glass-reinforced polyamide           |
| Hole punch:   | Steel                                |
| Punch guides: | Chromated brass                      |
| Storage:      | Cool and dry in original packaging   |

**Other product data:**

ETIM Classification: EC002248 Mounting for labelling material

**Advantages:**

Flexible and durable marking when you need it.  
 Easy marking on site together with FLEXIMARK® Character holders.  
 Cable and component marking for indoor and outdoor.  
 Cut you holders and punch holes for cable ties or screws easily on site.  
 Punch both holes for cable ties at the same time.

|                           |                                       |   |
|---------------------------|---------------------------------------|---|
|                           | <b>DATA SHEET</b>                     |  |
| Valid from:<br>18-12-2018 | <b>FLEXIMARK® Plier FL52ERA FL52A</b> |   |

**Product data:**

| Part no. | Article designation     | Punch both holes<br>for cable ties<br>(size holder mm) | Punch<br>center<br>hole | Content<br>(unit) | PU |
|----------|-------------------------|--|-------------------------|-------------------|----|
| 83252047 | FLEXIMARK Plier FL52ERA | 6-12   | Yes                     | 1                 | 1  |
| 83252024 | FLEXIMARK Plier FL52A   | 19   | Yes                     | 1                 | 1  |

**Product data spare parts:**

| Part no. | Article designation           | Content<br>(unit) | PU |
|----------|-------------------------------|-------------------|----|
| 83252049 | FLEXIMARK Extra knife FL52ERA | 1                 | 1  |
| 83252052 | FLEXIMARK Extra knife FL52A   | 1                 | 1  |

**Related products:**

With the FLEXIMARK® Plier for Character holders PTE, PTES you can both cut your holders into desired length, punch both holes for cable tie mounting and center hole for screw mounting. Within FLEXIMARK® Marking systems assortment we offer character holders in different lengths and widths.

# DATA SHEET



Valid from:  
18-12-2018

**FLEXIMARK® Plier FL52ERA FL52A**

## Delivery:

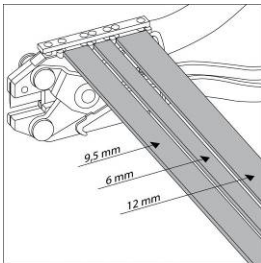
FLEXIMARK® Pliers are delivered in package separately.

## Mounting:

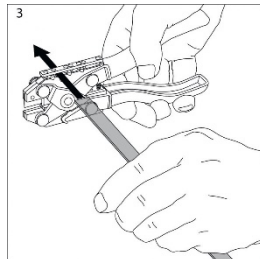
FLEXIMARK® Character holders can be used for both cable and component marking. You simply punch the holes for cable ties or screws as you need them.

1. With FLEXIMARK® Plier FL52ERA, you can punch both holes for cable ties on holders with a width of 6-12mm.

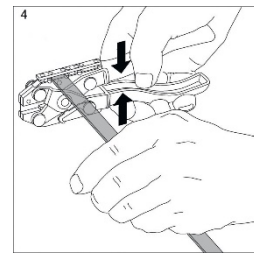
1. With FLEXIMARK® Plier FL52A you can punch both holes for cable ties on character holders with a width of 19mm



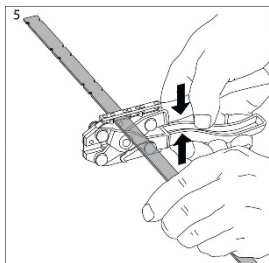
2. Insert the character holder into the area for punching. Note: Choose the right area for the right width of character holders.



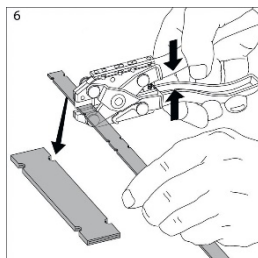
3. Punch both holes by squeezing the handles



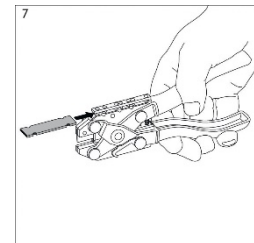
4. Push the holder through the hole for punching the following holes for cable tie mounting



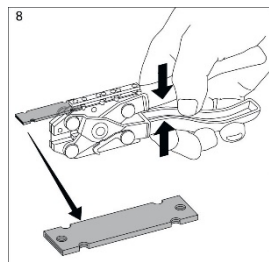
5. Use the front cutting part to cut the punched holders



6. Use the front punching part for punching center holes for screw mounting



7. Press the handles for punching center holes.



8. Mount your holder together with cable ties or screw



## Foot note:

Photographs are not to scale and do not represent detailed images of the respective products.

## X-ON Electronics

Largest Supplier of Electrical and Electronic Components

*Click to view similar products for [Pliers & Tweezers](#) category:*

*Click to view products by [Lapp Kabel](#) manufacturer:*

Other Similar products are found below :

[0031](#) [32750](#) [PN-5050/38D](#) [PG-TP-30D](#) [PG-DP-18-N](#) [G77015](#) [4-1532129-2](#) [77 12 115](#) [0037](#) [T0058765801](#) [571](#) [76C](#) [37 31 125](#) [RX 8130](#)  
[37 33 125](#) [DRP10N](#) [32 11 135](#) [36 12 130](#) [0036](#) [64 11 115](#) [0032](#) [6231-08](#) [PN 5050/19D](#) [PNI 5000](#) [TP 5000/15D](#) [TR 5000 PR](#) [TR 58 R A D](#)  
[00 20 08 US2](#) [13 01 614](#) [87 28 250 SBA](#) [INCP8](#) [30993](#) [011820101](#) [011830101](#) [011910110](#) [003780032](#) [003780041](#) [134-69-160](#) [134-69-180](#)  
[135-49-VDE-190](#) [137-49-VDE-180](#) [137-49-VDE-200](#) [137-49-VDE-240](#) [137-69-180](#) [137-69-200](#) [137-69-240](#) [138-49-VDE-200](#) [138-69-200](#)  
[140-49-VDE-170](#) [140-49-VDE-205](#)