
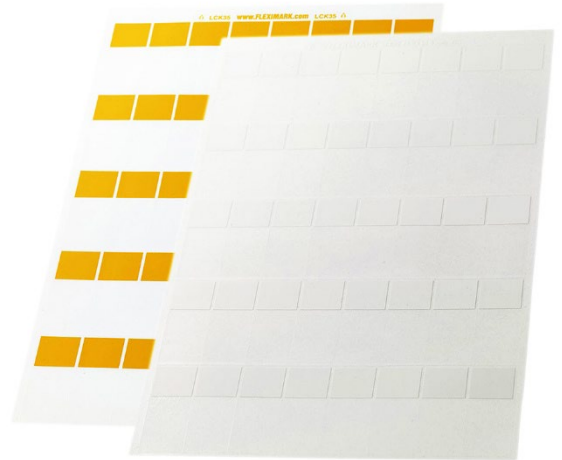


	DATA SHEET	
Valid from: 06-12-2018	FLEXIMARK® Wrapping label LCK	

Wrapping label for cables and pipes.
 Used for industrial, electrical and telecom installations in indoor environment.
 Print area with laminated transparent foil for protection.
 Delivered on A4 sheets for office printers.
 Different sizes for different cable diameters.
 UV-resistance.



Technical data

Material:	Polyester, halogen-free, UV-resistant
Adhesive:	Permanent acrylic
Colour:	White, Yellow
Temperature range:	-40°C to 125°C
Applying temperature:	min 10°C
Recommended storage:	21°C and 50% RH, <two years


Other product data:

ETIM Classification:	EC001288 Labelling material
Country of origin:	SE

Advantages:

Print your own durable marking when you need it.
 No cable ties are necessary for mounting.
 Durable marking with a laminated protection over the text. Chemical resistant.
 Halogen free material with UV-resistance.
 Designed for office laser printers, easy to use.

Creator: Fleximark/LR	Document: DB83256142EN FLEXIMARK Wrapping label LCK Version: 02	Page 1 of 3
-----------------------	--	-------------

	DATA SHEET	
Valid from: 06-12-2018	FLEXIMARK® Wrapping label LCK	

Print area



Laminated foil

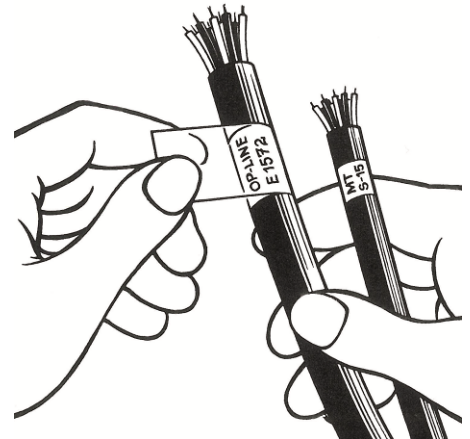


Delivery:


Wrapping label is delivered on A4 sheets for office laser printer.

Mounting:

FLEXIMARK® Wrapping label LCK is mounted directly on the cable, by wrapping the label around the cable with printing area first. At the end the transparent foil will cover the printing and protect the print against different strains.



Creator: Fleximark/LR	Document: DB83256 142EN FLEXIMARK Wrapping label LCK Version: 02	Page 2 of 3
-----------------------	---	-------------

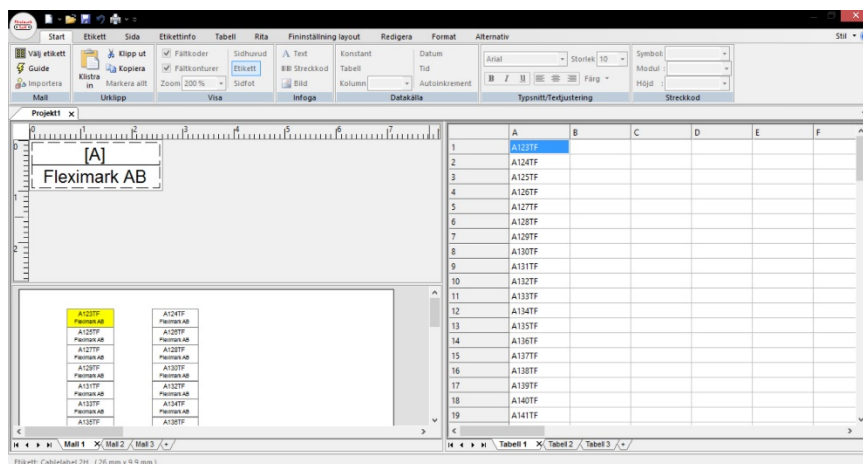
DATA SHEET		
Valid from: 06-12-2018	FLEXIMARK® Wrapping label LCK	

Product data:

E-nr.	LAPP Part no.	Article designation	Size/ Label WxH mm	Print area WxH (mm)	Max cable Ø (mm)	colour	Content/ sheet	Sheets /unit
2972070	83256142	Label LCK 32	25x33,5	25x12,7	7	Yellow	64	10
2972072	83256144	Label LCK 35	25x55	25x19	12	Yellow	40	10
2972344	83256146	Label LCK 40	25x94	25x25,4	21	Yellow	24	10
2972074	83256148	Label LCK 45	25x142,5	25x25,4	36	Yellow	16	10
2972347	83256161	Label LCK 48	34x93	34x25,4	21	Yellow	18	10
2972348	83256150	Label LCK 60	50x56	50x19	20	Yellow	20	10
2972350	83256152	Label LCK 65	50x94	50x25,4	21	Yellow	12	10
2972352	83256154	Label LCK 70	50x142,5	50x25,4	36	Yellow	8	10
2972071	83256143	Label LCK 32	25x33,5	25x12,7	7	White	64	10
2972073	83256145	Label LCK 35	25x55	25x19	12	White	40	10
2972345	83256147	Label LCK 40	25x94	25x25,4	21	White	24	10
2972075	83256149	Label LCK 45	25x142,5	25x25,4	36	White	16	10
2972346	83256160	Label LCK 48	34x93	34x25,4	21	White	18	10
2972349	83256151	Label LCK 60	50x56	50x19	20	White	20	10
2972351	83256153	Label LCK 65	50x94	50x25,4	21	White	12	10
2972353	83256155	Label LCK 70	50x142,5	50x25,4	36	White	8	10
2972355	83256168	Label LCK 280	25x280	25,0x25,4	80	White	8	10

Related products:

FLEXIMARK® LA Component labels can be printed using FLEXIMARK® Software and an office laser printer. Select label in the label selector in the program, add to the table what to print, select printer and print.



Note:

Pictures are not to scale and do not represent detailed images of each product.

Creator: Fleximark/LR	Document: DB83256142EN FLEXIMARK Wrapping label LCK Version: 02	Page 3 of 3
-----------------------	--	-------------

X-ON Electronics

Largest Supplier of Electrical and Electronic Components

Click to view similar products for [Wire Labels & Markers](#) category:

Click to view products by [Lapp Kabel](#) manufacturer:

Other Similar products are found below :

[89078GBEST](#) [PCL025-4](#) [5761-2SF](#) [58400](#) [M1.040.0000.6](#) [CRS-CM5M](#) [CRS-M18M](#) [CS1836-000](#) [CS8626-000](#) [CU6337-000](#) [CU6342-000](#)
[CU6343-000](#) [CWD01-0](#) [CWD012-0](#) [CWD012-7](#) [CWD015-3](#) [CWD015-7](#) [CWD02-0](#) [CWD02-3](#) [CWD02-4](#) [CWD02-6](#) [CWD02-8](#) [CWD02-A](#)
[CWD02-D](#) [CWD02-H](#) [CWD02-K](#) [CWD02-L](#) [CWD02-M](#) [CWD02-P](#) [CWD02-Q](#) [CWD02-R](#) [CWD02-U](#) [CWD02-W](#) [CWD02-Y](#) [CWD03-+](#)
[CWD03-0](#) [CWD03-P](#) [CWD06-0](#) [CWD06-8](#) [CWD06-9](#) [CWD06-L](#) [CWD06-N](#) [CWD09-0](#) [CWD09-5](#) [CWD09-7](#) [6806810001](#) [CZ2857-000](#)
[6V1J0](#) [7-1768041-1](#) [739253-000](#)