


21700147	DATA SHEET	
Valid from: 13.07.2022	ETHERLINE® ACCESS PN08M12	

Description

- PROFINET IO-Switch, managed, IP67
- Fast and easy configuration and diagnose via PROFINET or web interface, Data-Ports: M12-D
- Various management and maintenance policies available (e.g. MRP client, LLDP, DCP, SNMP, diagnostic alarms, port mirroring, network statistics (frames, errors))
- PROFINET Conformance Class B



General characteristics

Interfaces	X1 : 8x M12-D (female) – Data ports X2 : 1x M12-L (male, 5-polig) – Voltage supply X3 : 1x M12-A (female, 5-polig) – without function
Switch properties	medium redundancy (MRP), automatic address/topology recognition (LLDP, DCP)
Temperature range	ambient temp.: -40°C to +75°C (-40°F to 167°F) transport - and storage temp.: -40°C to +85°C (-40°F to 185°F)
relative humidity	95 % (non-condensing)
Pollution degree	2
Protocol	PROFINET IO acc. IEC 61158-6-10
MTBF (mean time between failures)	8.75 years @ MIL-HDBK-217F
Torque for IP degree of protection	0.8 Nm

Variation

Article	Description	Amount of Data-Ports
21700147	ETHERLINE ACCESS PN08M12	8


Power requirements

Voltage Input	24 V DC (18-30V DC)
Power Consumption (max.)	3.5 W
Input current (max.) 24 V DC	130 mA

Physical properties

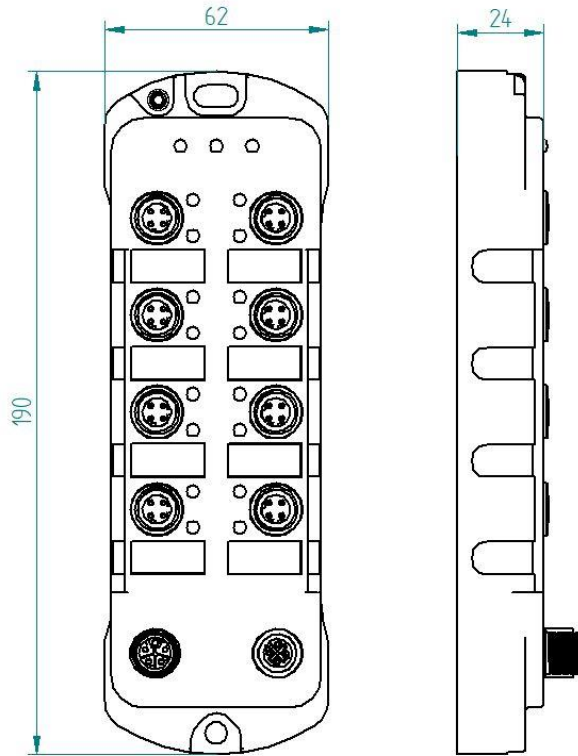
IP class	IP67
Weight	0.41 kg
Installation	Screwing via hole pattern

Creator: THLE3/PDP Released: IVSE1/PDP	Document: DB21700147EN Version: 00	Page 1 of 3
---	---------------------------------------	-------------

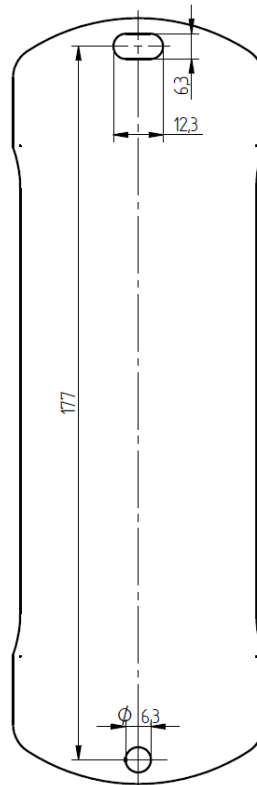
21700147	DATA SHEET	
Valid from: 13.07.2022	ETHERLINE® ACCESS PN08M12	

Technical drawing


Dimensional drawing



Hole pattern



Creator: THLE3/PDP Released: IVSE1/PDP	Document: DB21700147EN Version: 00	Page 2 of 3
---	---------------------------------------	-------------

21700147	DATA SHEET	
Valid from: 13.07.2022	ETHERLINE® ACCESS PN08M12	

Standards and approvals

EMC	DIN EN IEC 61000-6-2 DIN EN IEC 61000-6-4
PROFINET	Conformance Class B Netload Class I
Approvals	CE

Application range

Automation, industrial machinery and plant engineering

Note

Photographs are not to scale and do not represent detailed images of the respective products.

Creator: THLE3/PDP Released: IVSE1/PDP	Document: DB21700147EN Version: 00	Page 3 of 3
---	---------------------------------------	-------------

X-ON Electronics

Largest Supplier of Electrical and Electronic Components

Click to view similar products for [Ethernet Modules](#) category:

Click to view products by [Lapp Kabel](#) manufacturer:

Other Similar products are found below :

[I350T4V2](#) [GX-OD1612](#) [TDKEZW3](#) [V23993-USB1029A](#) [I350T4V2BLK](#) [I350T2V2BLK](#) [FC6A-PH1](#) [EM-ETH-GATEWAY-IFS](#) [EK1122](#)
[EL1018](#) [EL1809](#) [EL2622](#) [EL2904](#) [EL3052](#) [EL4022](#) [EL6021](#) [EL6224](#) [EL6631](#) [EL9011](#) [EL9100](#) [KL1002](#) [KL1104](#) [KL2602-0010](#) [KL3208-](#)
[0010](#) [KL6821](#) [KL9100](#) [KL9200](#) [X710T2L](#) [RY9012A0000GZ00#002](#) [X710T4LBLK](#) [7000-44711-7960300](#) [7000-P6241-P060500](#) [2352903-2](#)
[BOXER-6614-A1M-1110](#) [ED-593](#) [WC-PD13C033I-1](#) [EL2809-0015](#) [WC-PD30A012C](#) [NS4](#) [USR-K3](#) [USR-K2](#) [USR-TCP232-E2](#) [WC-](#)
[PD13S120B](#) [WC-PD13C012S](#) [WC-PD07H012C](#) [WC-PD30D240H](#) [WC-PD25C012T](#) [WC-PD60B120A](#) [WC-PD13C050A](#) [WC-PD48B120A](#)