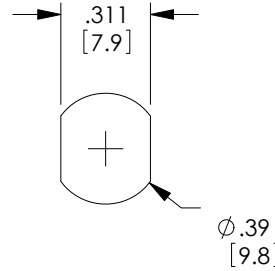
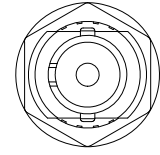
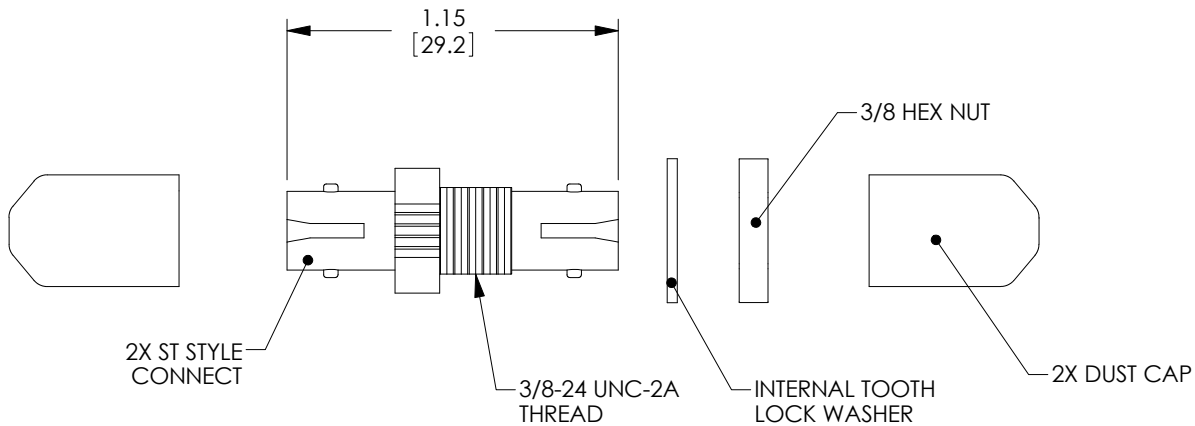


THE INFORMATION CONTAINED IN THIS DRAWING IS THE SOLE PROPERTY OF L-COM, INC. ANY REPRODUCTION IN PART OR WHOLE WITHOUT THE WRITTEN PERMISSION OF L-COM, INC. IS PROHIBITED.

| REVISIONS | | | |
|-----------|-------------------------------|---------|-------------|
| REV | DESCRIPTION | DATE | APPROVED |
| A | DRAWING REPLACES FOA-001A-OD1 | 6/26/14 | D.FRISIELLO |
| | | | |
| | | | |



NOTES:

MATERIALS:
 BODY: ZINC ALLOY
 SLEEVE: CERAMIC
 LOCK WASHER: STEEL
 NUT: S50C, CARBON STEEL
 RETENTION WASHER: ZINC ALLOY
 DUST CAP: PVC

FINISH:
 BODY: NICKEL PLATED
 LOCK WASHER: NICKEL PLATED
 NUT: NICKEL PLATED
 RETENTION WASHER: NICKEL PLATED

ALL DIMENSIONS ARE FOR REFERENCE ONLY.

COMPONENT SHALL BE INDIVIDUALLY PACKAGED IN ACCORDANCE WITH L-COM SPECIFICATION PS-0031.

REGULATORY COMPLIANCE:
 CE2011/65/EU (ROHS DIRECTIVE)

| | | | | | | | |
|--------------------------------------------------------------------------------------------------------------------------------------------------------------------------------------------------------------------------------------------------------------------------------------------------------------------------------------------------------------------------------------|--------------------------------------|-------------------------------|--------------------------------------------------|--------------------------------------------------|--------------------------|-----------------------------|------------------|
| UNLESS OTHERWISE SPECIFIED, DIMENSIONS ARE IN INCHES [mm] OVERALL CABLE LENGTH TOLERANCE: ≤12 [305] = +1 [25] / -0 >12 [305] ≤60 [1524] = +2 [51] / -0 >60 [1524] ≤120 [3048] = +4 [102] / -0 >120 [3048] ≤300 [7620] = +6 [152] / -0 >300 [7620] = +5% / -0% ALL OTHER DIMENSIONAL TOLERANCES: .X = ±.2 [5.08] .XX = ±.02 [51] .XXX = ±.005 [1.27] | APPROVALS DRAWN BY C.MCCORMICK | DATE 12/28/2000 | | 45 BEECHWOOD DRIVE NORTH ANDOVER, MA 01845 | | | |
| | CHECKED BY D.PARHAM | 01/12/2000 | | CATEGORY FIBER OPTICS | | | |
| | APPROVED BY R.CARRICK | 01/12/2000 | PRODUCT DESCRIPTION ADPTR,ST-ST SMLPX CERAMIC | SIZE A | FSCM NO. 43321 | DWG. NO. FOA-001A | REV. A |
| | PROJECTION | COLOR VARIATIONS MAY OCCUR | SCALE: NONE | CAD FILE: FOA-001A.SLDDRW | SHEET 1 OF 1 | | |

X-ON Electronics

Largest Supplier of Electrical and Electronic Components

Click to view similar products for [l-com manufacturer](#):

Other Similar products are found below :

[FOA-550A](#) [SDRA15AG](#) [UMC-201](#) [CSMN50MF-5](#) [CSMNB15MF-15](#) [TRD815RA2BL-5](#) [CA3N050](#) [CA3A-90DA-1M](#) [U3A00003-03M](#)
[CTLF3VGAMM-20](#) [HDCAMM-3](#) [U3A00014-03M](#) [ECF-SK-25](#) [CSMT15MF-10](#) [CSMT15MM-15](#) [CSMT15MM-25](#) [CSPL15MF-50](#)
[CSPL25MF-25](#) [CSPL9MF-10](#) [CSPL9MF-5](#) [CSPL25MF-5](#) [CSPL25MF-2.5](#) [AL-IPEPS](#) [NB201611-10F-1](#) [TDG1026KC5-MNL](#) [NB121005-](#)
[10F](#) [TRD855SRA6DBL-05M](#) [TRD855SRA6DBL-10M](#) [TRD855SRA7DBL-1M](#) [TRD855SRA7DBL-10M](#) [PR175SCDLCQ24](#) [TRG508-T4T-](#)
[3M](#) [TRA5261-15F](#) [TRA5261S-1F](#) [TRA6261-1F](#) [TRA6261-10F](#) [USBBFT](#) [DGB25M](#) [CASATAL-18](#) [CSM25MM-10](#) [CSM37MF-10](#)
[CSUSB-100](#) [CA3A-90RA-1M](#) [CA3A-90RMICB-1M](#) [U2A00003-3M](#) [U3A00003-05M](#) [U2A00008-12I](#) [U3A00056-03M](#) [U3A00007-075M](#)
[U3A00007-1M](#)