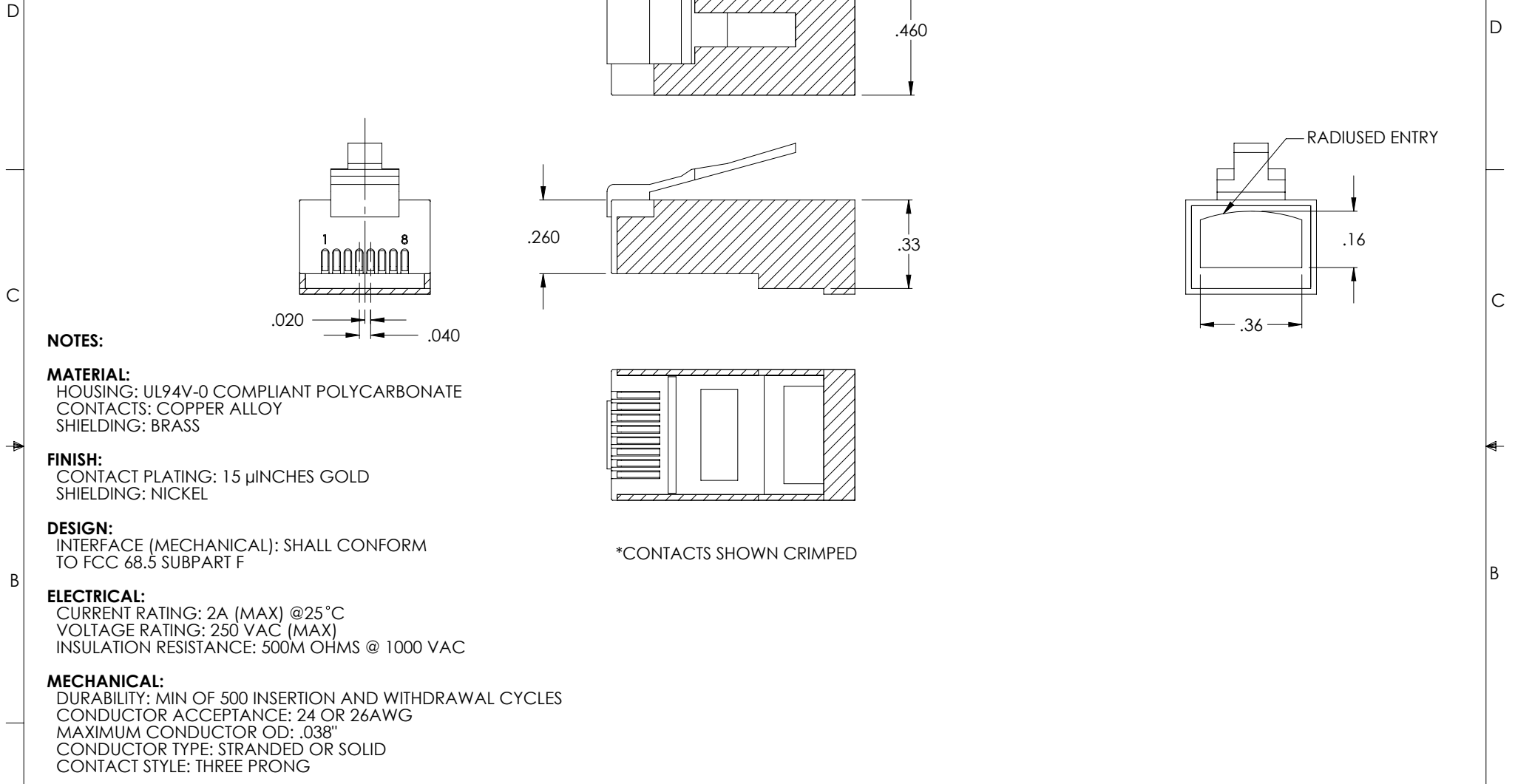


THE INFORMATION CONTAINED IN THIS DRAWING IS THE SOLE PROPERTY OF L-COM, INC. ANY REPRODUCTION IN PART OR WHOLE WITHOUT THE WRITTEN PERMISSION OF L-COM, INC. IS PROHIBITED.

REVISIONS			
REV	DESCRIPTION	DATE	APPROVED
A	REPLACES T8P8CSR-OD1	6/24/14	D. CASTRO



NOTES:

MATERIAL:
 HOUSING: UL94V-0 COMPLIANT POLYCARBONATE
 CONTACTS: COPPER ALLOY
 SHIELDING: BRASS

FINISH:
 CONTACT PLATING: 15 μINCHES GOLD
 SHIELDING: NICKEL

DESIGN:
 INTERFACE (MECHANICAL): SHALL CONFORM TO FCC 68.5 SUBPART F

ELECTRICAL:
 CURRENT RATING: 2A (MAX) @25°C
 VOLTAGE RATING: 250 VAC (MAX)
 INSULATION RESISTANCE: 500M OHMS @ 1000 VAC

MECHANICAL:
 DURABILITY: MIN OF 500 INSERTION AND WITHDRAWAL CYCLES
 CONDUCTOR ACCEPTANCE: 24 OR 26AWG
 MAXIMUM CONDUCTOR OD: .038"
 CONDUCTOR TYPE: STRANDED OR SOLID
 CONTACT STYLE: THREE PRONG

ENVIRONMENTAL:
 OPERATING TEMPERATURE RANGE: -40°C TO +125°C.

MISCELLANEOUS:
 ALL DIMENSIONS ARE FOR REFERENCE ONLY.
 COMPONENT SHALL BE INDIVIDUALLY PACKAGED PER L-COM SPEC PS-0031.

REFERENCE THE FOLLOWING DOCUMENTS:
 TERMINATION INSTRUCTIONS LTI-018
 TOOLING INFORMATION LCT-002
 LCT-003 (PROPRIETARY)

*CONTACTS SHOWN CRIMPED

UNLESS OTHERWISE SPECIFIED, DIMENSIONS ARE IN INCHES [mm] OVERALL CABLE LENGTH TOLERANCE: ≤12 [305] = +1 [25] / -0 >12 [305] ≤60 [1524] = +2 [51] / -0 >60 [1524] ≤120 [3048] = +4 [102] / -0 >120 [3048] ≤300 [7620] = +6 [152] / -0 >300 [7620] = +5% / -0%	APPROVALS	DATE		45 BEECHWOOD DRIVE NORTH ANDOVER, MA 01845		
	DRAWN BY D. PARHAM	3/25/2002				
ALL OTHER DIMENSIONAL TOLERANCES: .X = ± .2 [5.08] .XX = ± .02 [.51] .XXX = ±.005 [.13]	CHECKED BY T. CLARK	3/26/2002	CATEGORY TELECOM/MODULAR			
	APPROVED BY C. McCORMICK	3/26/2002	PRODUCT DESCRIPTION PLUG,RJ45 8X8 SHLD			
PROJECTION 	CONFIGURATION DETAILS OF UNDIMENSIONED FEATURES MAY VARY	COLOR VARIATIONS MAY OCCUR	SIZE A	FSCM NO. 43321	DWG. NO. T8P8CSR	REV. A
SCALE: NONE			CAD FILE: T8P8CSR.SLDDRW		SHEET 1 OF 1	

X-ON Electronics

Largest Supplier of Electrical and Electronic Components

Click to view similar products for [Modular Connectors / Ethernet Connectors](#) category:

Click to view products by [L-Com](#) manufacturer:

Other Similar products are found below :

[RJE231881317T](#) [MP1010RX-1000](#) [MP44RX-1000](#) [GAX-3-66](#) [GAX-8-62](#) [93606-0253](#) [GD-A-44](#) [GDCX-PA-66-50](#) [GDCX-PN-64](#) [GDCX-PN-66](#) [GDCX-PN-66-50](#) [GDLX-A-66](#) [GDLX-A-88](#) [GDLX-N-66](#) [GDLX-S-88K](#) [GDTX-S-88-50](#) [GDX-PA-1010](#) [GLX-N-1010M-BLK](#) [GLX-N-44M](#) [GLX-S-88M-BLK](#) [GMX-N-1010](#) [GMX-S-1010](#) [GMX-S-66](#) [GMX-SMT2-N-1010](#) [GMX-SMT2-N-64-50](#) [GMX-SMT2-S6-88](#) [GMX-SMT4-N-88](#) [GPX-2-64](#) [GRT1-BT1-5](#) [GSGX-N-2-88](#) [GSX-NS2-88-3.05](#) [GSX-NS2-88-3.05-50](#) [GSX-NS-88-3.05-30](#) [GSX-NS-88-3.05-50](#) [GSX-NS-88-3.68](#) [1-1775629-2](#) [GWLX-S-88-GR](#) [GWLX-S9-88-YG](#) [1300500326](#) [1300500227](#) [1300530003](#) [1300570002](#) [1324640-4](#) [RJ11FTVC2G](#) [RJ11FTVC2N](#) [RJFTVX2SA1G](#) [132764-001](#) [1400000](#) [1413176](#) [1413235](#)