

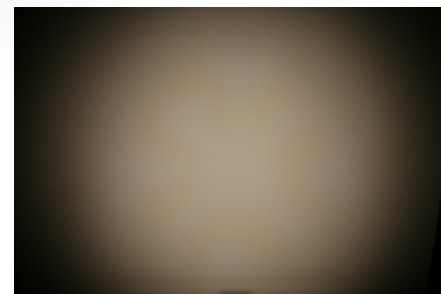
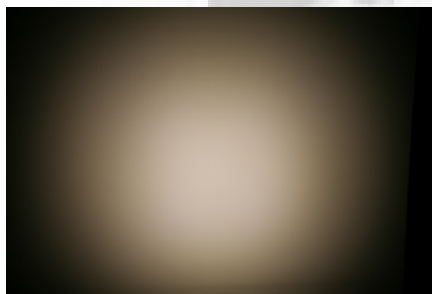
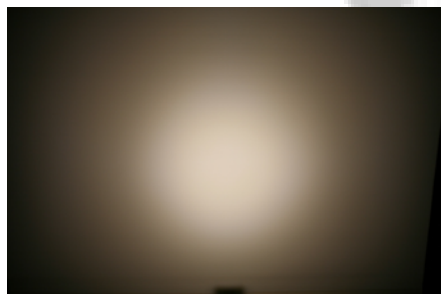
Bridget reflectors for Bridgelux BXRA-C/N/W 0400 series of LEDs



- Specially designed for Bridgelux BXRA-C/N/W0400 series of LEDs.
- Special care taken to make a uniform white or warm white illumination. Lenses work well with other colors, too.
- Very compact dimensions
- Lens material optical grade metallized PC. Allows use of high current and temperature conditions

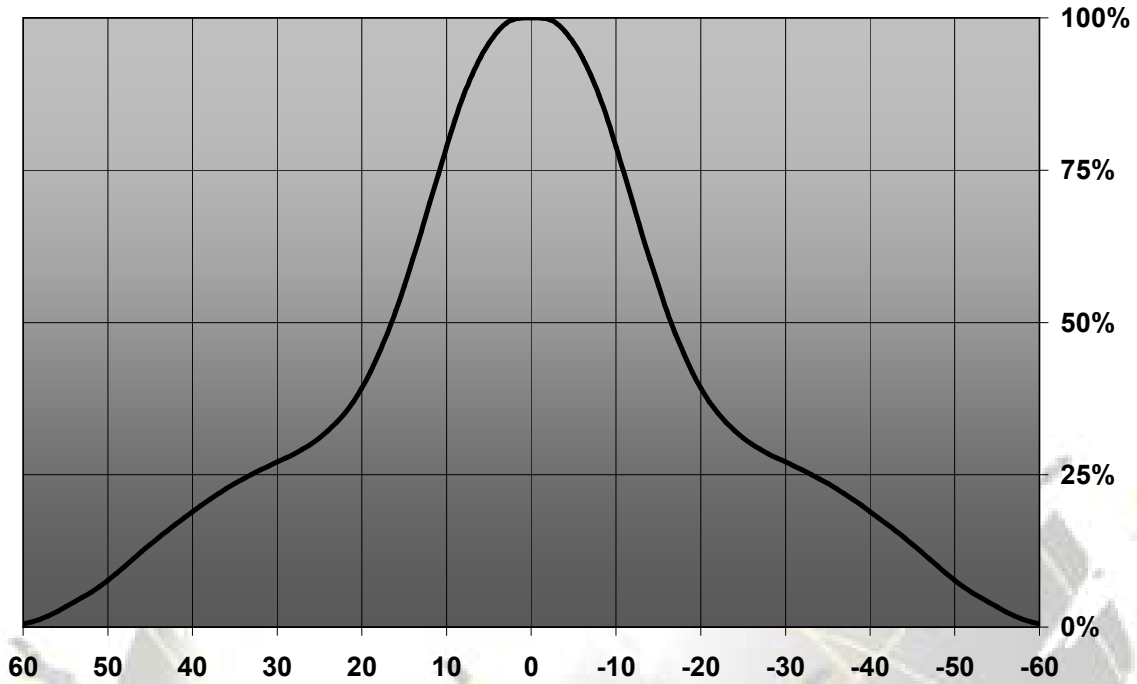
LENS TYPES

NAME	ORDERING CODE	FWHM Angle
Bridget Spot	C10918_Bridget-S	±16.5°
Bridget Medium	C10919_Bridget-M	±23.5°
Bridget Wide	C10920_Bridget-W	±32.5°

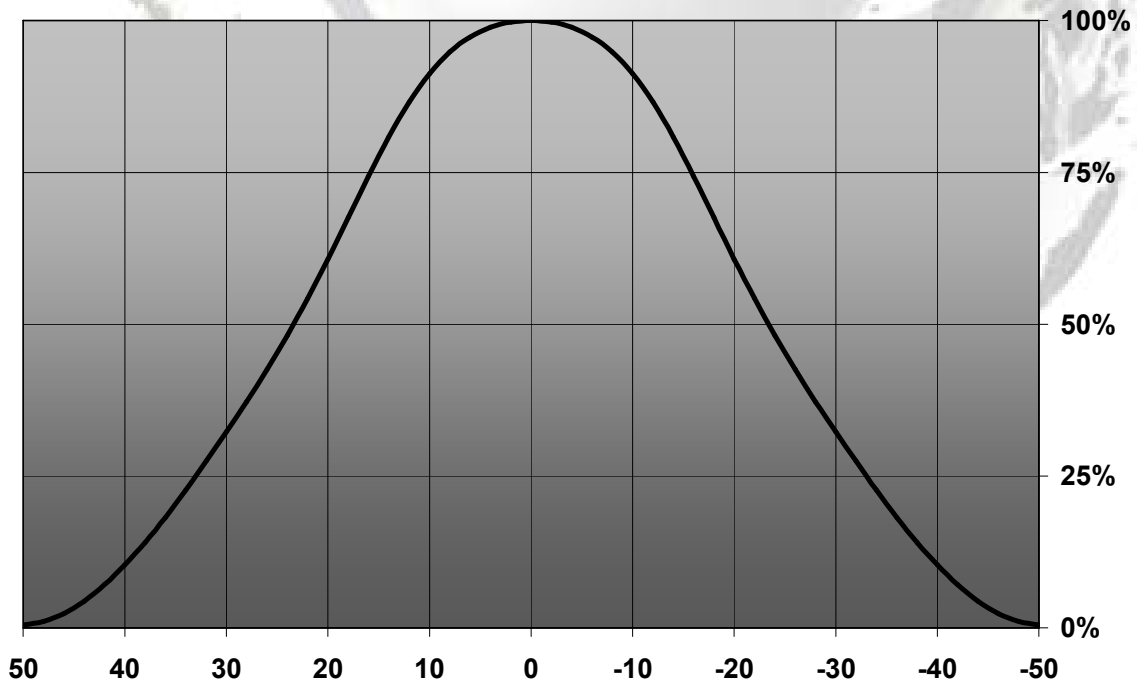


© Ledil Oy – PRELIMINARY - Subject to change without prior notice

Relative Intensity of C10918_Bridget-S-34

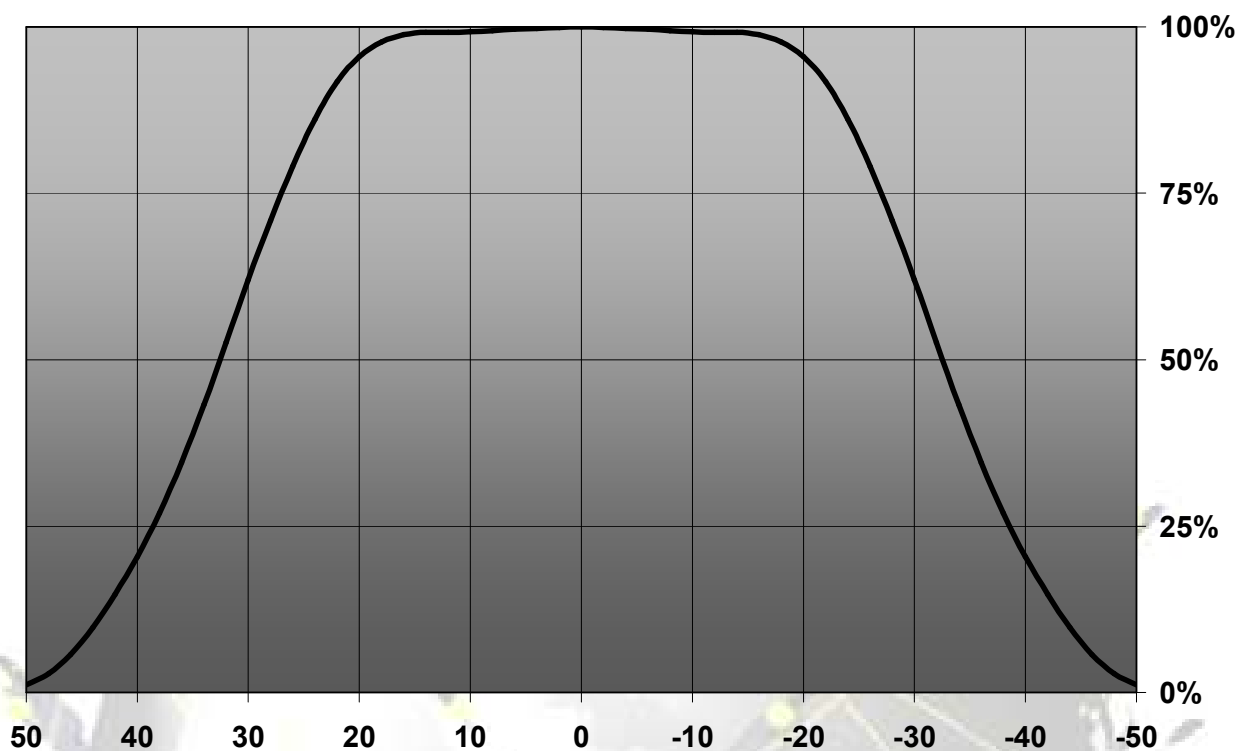


Relative Intensity of C10919_Bridget-M



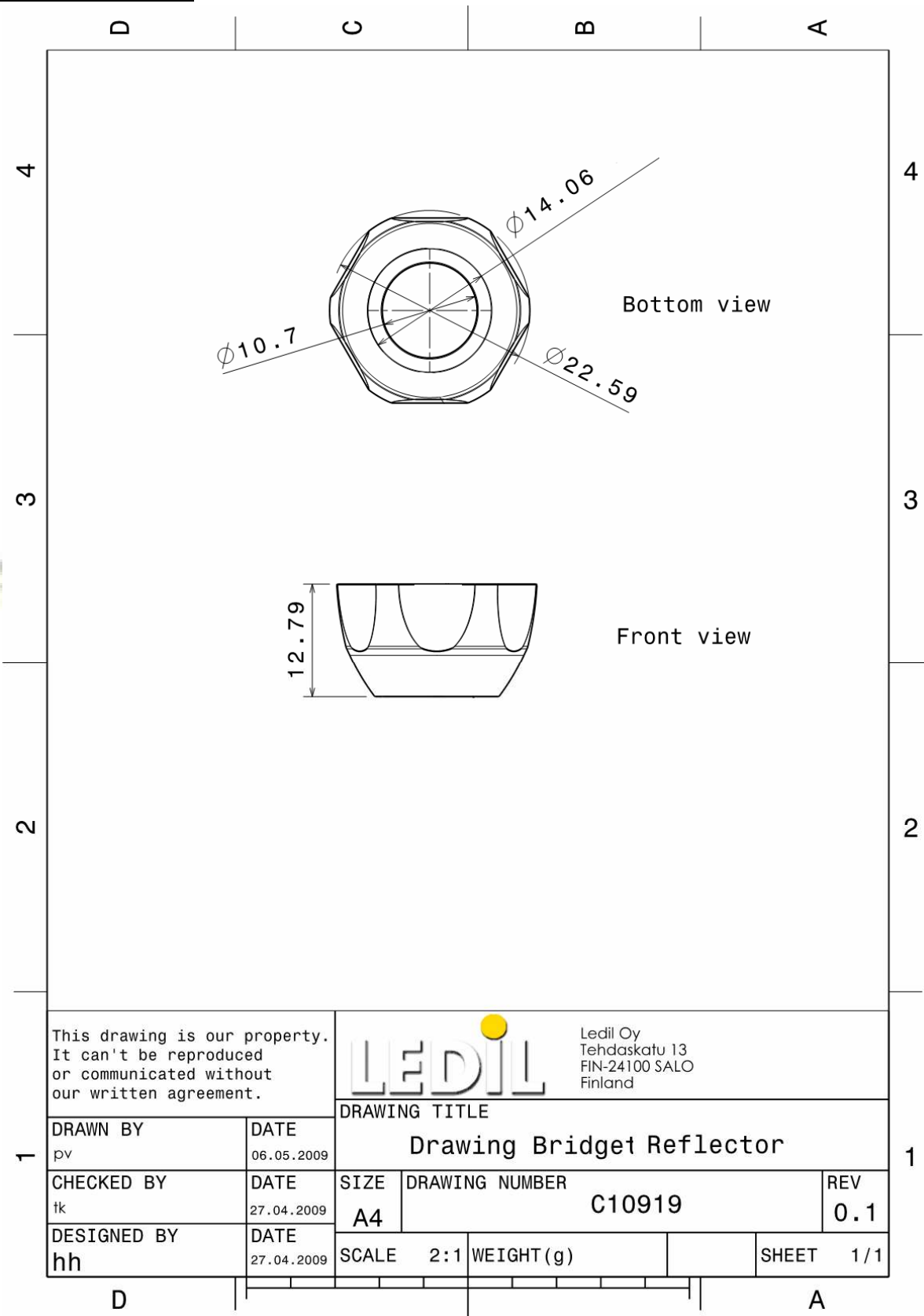
© Ledil Oy – PRELIMINARY - Subject to change without prior notice


Relative Intensity of C10920_Bridget-W-58



EULUMDAT & IES FILES AVAILABLE BY REQUEST

DRAWINGS



This drawing is our property. It can't be reproduced or communicated without our written agreement.				Ledil Oy Tehdaskatu 13 FIN-24100 SALO Finland	
DRAWING TITLE					
Drawing Bridget Reflector					
DRAWN BY	DATE	SIZE	DRAWING NUMBER	REV	
pv	06.05.2009	A4	C10919	0.1	
CHECKED BY	DATE	SCALE	WEIGHT (g)	SHEET	
tk	27.04.2009	2:1		1/1	
DESIGNED BY	DATE				
hh	27.04.2009				

© Ledil Oy - PRELIMINARY - Subject to change without prior notice

X-ON Electronics

Largest Supplier of Electrical and Electronic Components

Click to view similar products for [Ledil](#) manufacturer:

Other Similar products are found below :

[F10390_PENTA-5-M](#) [C10472_RER-5-M](#) [FCN10804_LR1-RS](#) [FCN11454_LE1-M2](#) [C10365_PLATINUMROCKET-3-W](#)
[C12084_BROOKE-SCR-W](#) [FA10643_TINA-M](#) [C12449_STRADA-T-6X1-DWC](#) [CA11264_HEIDI-D](#) [CN12644_LENINA-S](#) [CS14840_HB-2X2MX-M](#) [F14533_ANGELETTE-M](#) [F15244_FLORENCE-ZT25-S](#) [CN17052_DAISSY-7X1-WW-MATT](#) [C17171_DAISSY-8X1-SHD-MATT](#)
[FA11207_TINA-W](#) [CN14236_WINNIE-S](#) [C11795_ANNA-40-4-W](#) [C13508_STRADA-SQ-T2](#) [CN12646_LENINA-W](#) [CP16939_CARMEN-W-C-WHT](#) [C17341_DAISSY-4X1-WW-US-D](#) [C14275_SHELLY-T-6X1-N](#) [C14346_ANGELETTE-WAS](#) [CA12000_EMILY-O-WAS](#)
[C11347_REGINA-XP](#) [C13032_BARBARA-WW](#) [C15800_MOLLY-S](#) [FP15897_HB-2X2MXS-WWW](#) [FCP13895_SEANNA-A](#)
[CA12242_HEIDI-SS](#) [CP12413_LOS-D](#) [CP13682_RGBX2-S](#) [CA11476_TYRA2-M](#) [FS15626_FLORENCE-3R-IP-Z90](#) [FN15186_STELLA-HB](#) [C17172_DAISSY-8X1-SHD-MATT-WHT](#) [C17174_DAISSY-4X1-W-US](#) [CA11267_HEIDI-O-90](#) [CN12721_LENA-S-DL](#)
[CA12530_HEIDI-D](#) [C12955_BARBARA-XW](#) [CA12878_MIRA-M](#) [CP10944_RGBX-M](#) [FA10661_LXP-RS](#) [FS15786_FLORENCE-3R-IP-Z60](#) [C15028_FLORENTINA-4X1-SHD](#) [FCP15347_FLORENTINA-4X1-O](#) [CA16205_GABRIELLA-MIDI-O](#) [CP12090_VENLA-S-IRIS](#)