

## VIOLETTA-S

~15° spot beam

### TECHNICAL SPECIFICATIONS:

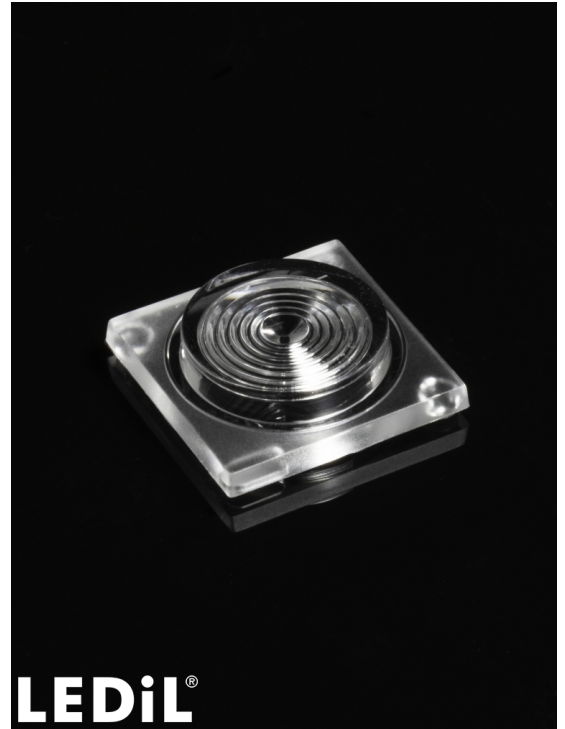
Dimensions	21.7 x 21.7 mm
Height	6.6 mm
Fastening	pin
ROHS compliant	yes ⓘ

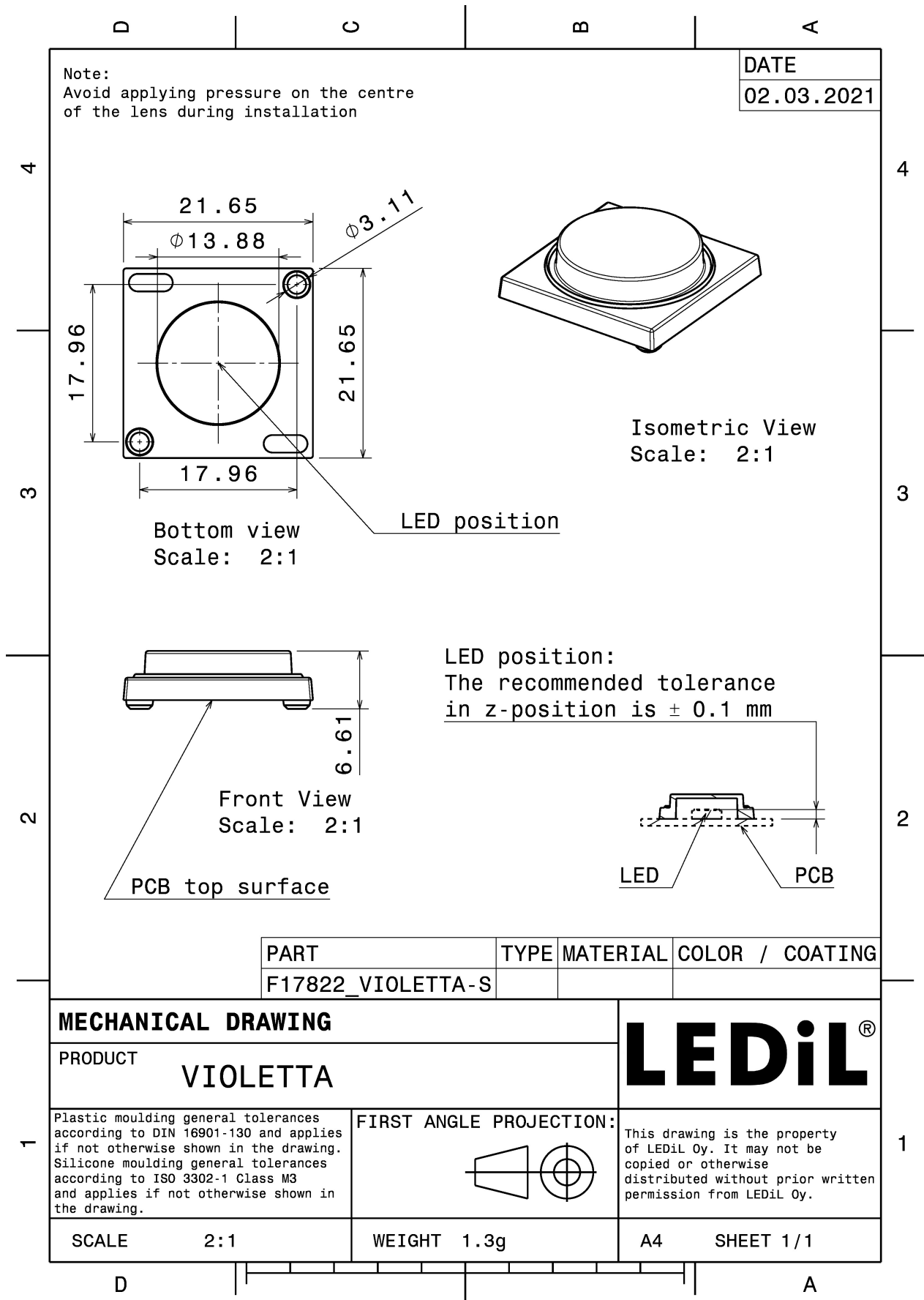
### MATERIAL SPECIFICATIONS:

Component	Type	Material	Colour	Finish
VIOLETTA-S	Single lens	Silicone	clear	gloss

### ORDERING INFORMATION:

Component	Qty in box	MOQ	MPQ	Box weight (kg)
F17822_VIOLETTA-S » Box size: 485 x 280 x 100 mm	1620	270	135	3.5






See also our general installation guide: [www.ledil.com/installation\\_guide](http://www.ledil.com/installation_guide)

### PHOTOMETRIC DATA (MEASURED):

	
LED	S3535-DR100-W272-P40
FWHM / FWTM	21.0° / 35.0°
Efficiency	72 %
LEDs/each optic	1
Light colour	UV-C
Required components:	
The UVC LED result tolerance is $\pm 10$ %	

	
LED	XFM-5050 2 Die
FWHM / FWTM	29.0° / 53.0°
Efficiency	%
LEDs/each optic	1
Light colour	UV-C
Required components:	
The UVC LED result tolerance is $\pm 10$ %	

	
LED	XFM-5050 3 Die
FWHM / FWTM	24.0° / 55.0°
Efficiency	73 %
LEDs/each optic	1
Light colour	UV-C
Required components:	
The UVC LED result tolerance is $\pm 10$ %	

	
LED	OSLON UV 3636 (SU CULBN1.VC)
FWHM / FWTM	10.0° / 21.0°
Efficiency	67 %
LEDs/each optic	1
Light colour	UV-C
Required components:	
The UVC LED result tolerance is $\pm 10$ %	

#### PHOTOMETRIC DATA (MEASURED):

##### **OSRAM** Opto Semiconductors

LED OSLON UV 3636 (SU CULDN1.VC)  
FWHM / FWTM 16.0° / 35.0°  
Efficiency 70 %  
LEDs/each optic 1  
Light colour UV-C  
Required components:

The UVC LED result tolerance is  $\pm 10$  %

##### **OSRAM** Opto Semiconductors

LED OSLON UV 6060 (SU CZHPF1.VC)  
FWHM / FWTM 20.0° / 41.0°  
Efficiency 66 %  
LEDs/each optic 1  
Light colour UV-C  
Required components:

The UVC LED result tolerance is  $\pm 10$  %

##### **STANLEY**

LED ZEUBE265 Series  
FWHM / FWTM 22.0° / 45.0°  
Efficiency 60 %  
LEDs/each optic 1  
Light colour UV-C  
Required components:

The UVC LED result tolerance is  $\pm 10$  %

#### PHOTOMETRIC DATA (SIMULATED):

**bridgelux**

LED	Bridgelux SMD 5050
FWHM / FWTM	35.0° / 60.0°
Efficiency	89 %
Peak intensity	1.8 cd/lm
LEDs/each optic	1
Light colour	White
Required components:	

**LUMINUS**

LED	XBT-1313
FWHM / FWTM	9.4° / 19.0°
Efficiency	78 %
LEDs/each optic	1
Light colour	UV-C
Required components:	

The UVC LED result tolerance is  $\pm 10$  %

**LUMINUS**

LED	XBT-3535-UV
FWHM / FWTM	16.0° / 25.0°
Efficiency	81 %
LEDs/each optic	1
Light colour	UV-C
Required components:	

The UVC LED result tolerance is  $\pm 10$  %

**LUMINUS**

LED	XFM-5050 2 Die
FWHM / FWTM	19.0° / 33.0°
Efficiency	78 %
LEDs/each optic	1
Light colour	UV-C
Required components:	

The UVC LED result tolerance is  $\pm 10$  %

#### PHOTOMETRIC DATA (SIMULATED):

**LUMINUS**

LED	XFM-5050 3 Die
FWHM / FWTM	23.0° / 35.0°
Efficiency	78 %
LEDs/each optic	1
Light colour	UV-C
Required components:	

The UVC LED result tolerance is  $\pm 10$  %

**LUMINUS**

LED	XFM-5050 4 Die
FWHM / FWTM	23.0° / 37.0°
Efficiency	79 %
LEDs/each optic	1
Light colour	UV-C
Required components:	

The UVC LED result tolerance is  $\pm 10$  %

**LUMINUS**

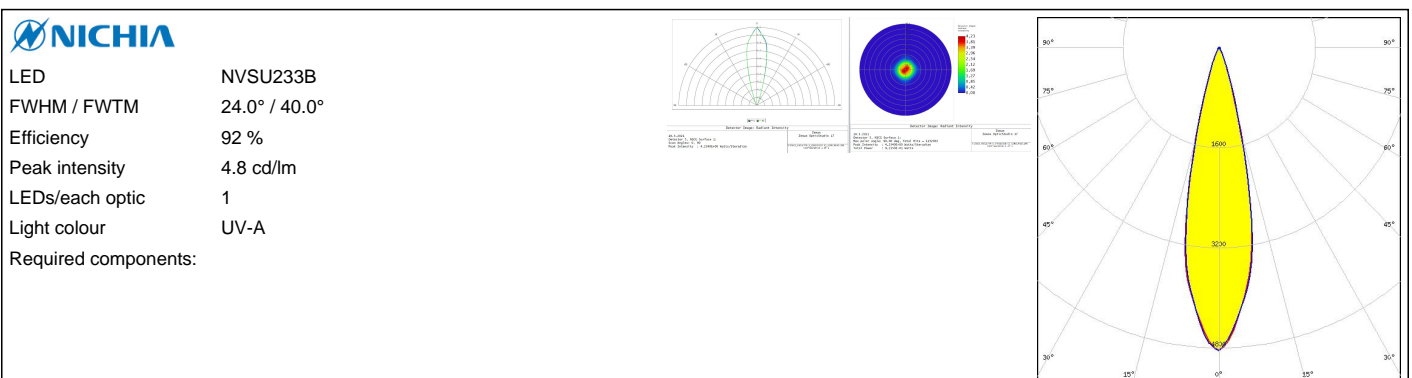
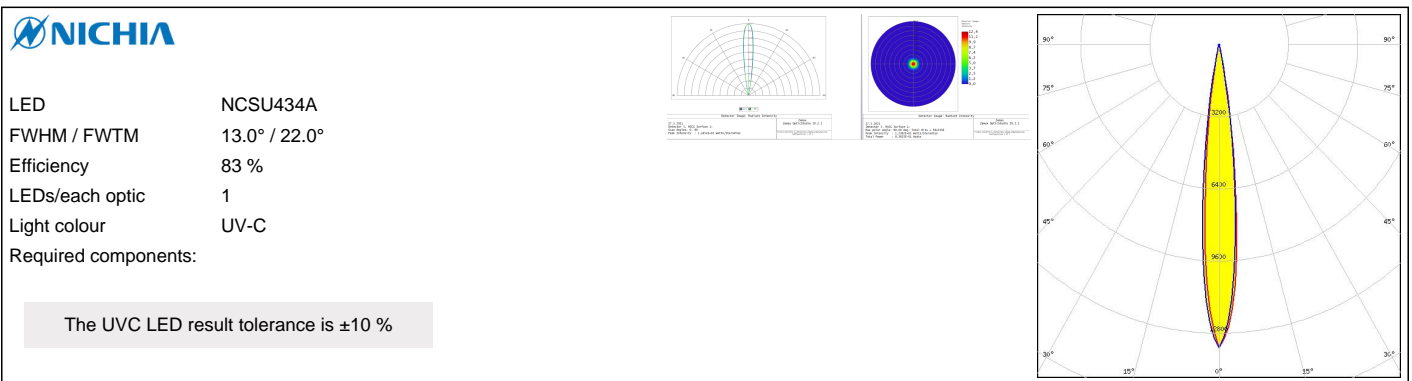
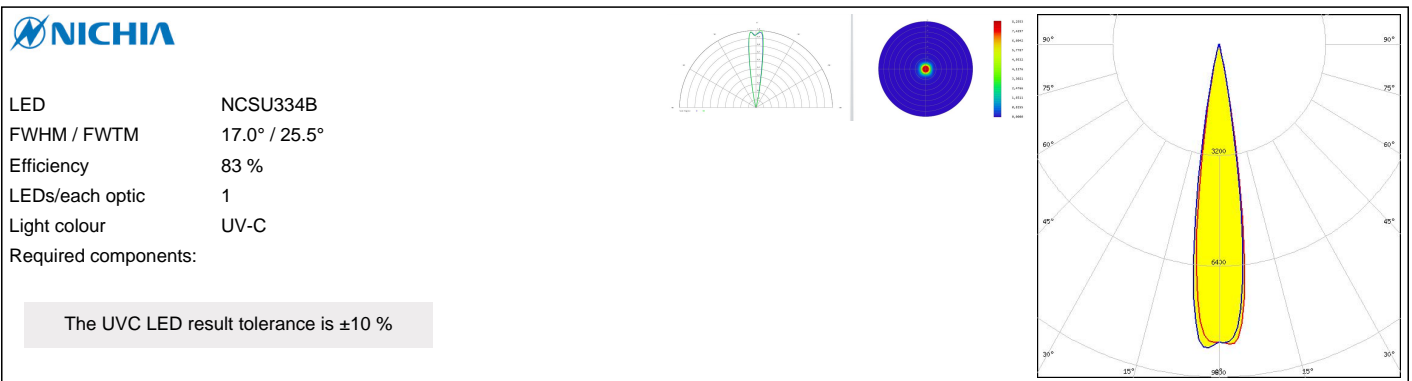
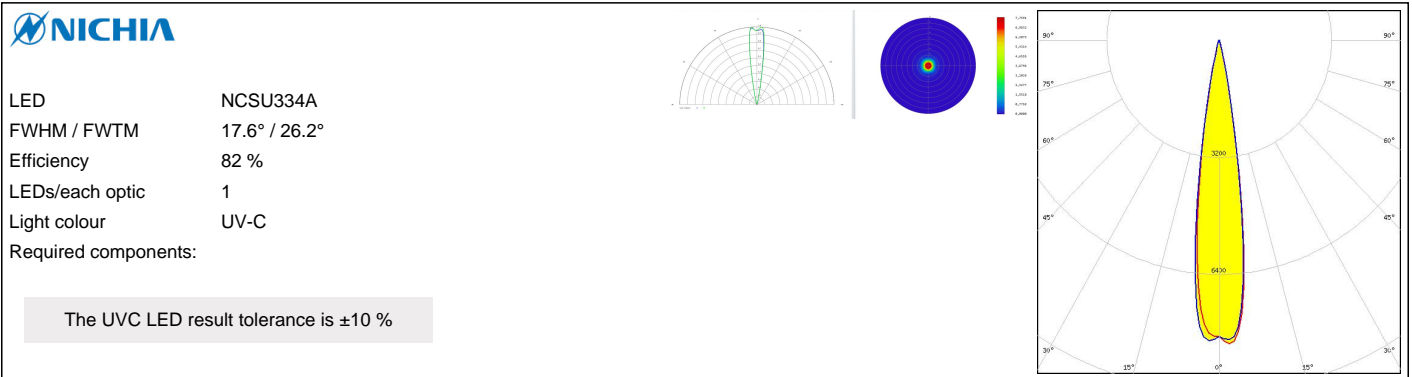
LED	XST-3535-UV
FWHM / FWTM	28.0° / 47.0°
Efficiency	77 %
LEDs/each optic	1
Light colour	UV-C
Required components:	

The UVC LED result tolerance is  $\pm 10$  %

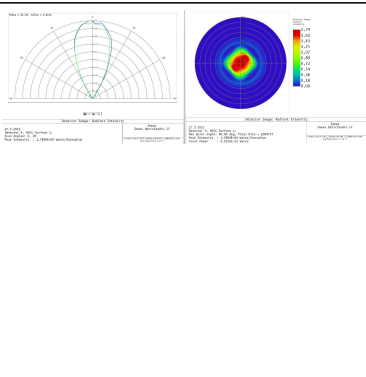
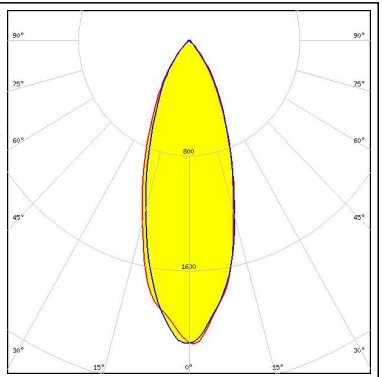
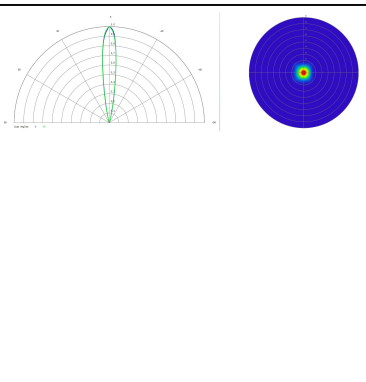
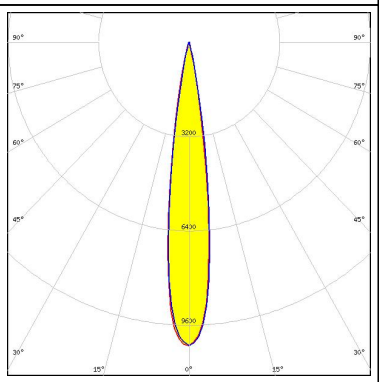
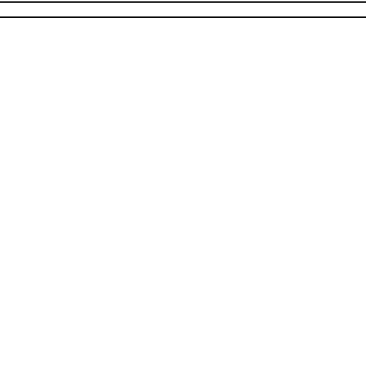
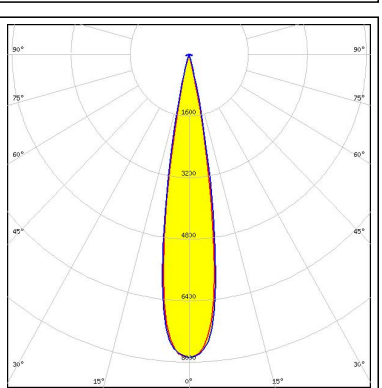
**NICHIA**

LED	NCSU276C
FWHM / FWTM	12.0° / 24.0°
Efficiency	92 %
Peak intensity	13.5 cd/lm
LEDs/each optic	1
Light colour	UV-A
Required components:	

### PHOTOMETRIC DATA (SIMULATED):



### PHOTOMETRIC DATA (SIMULATED):

<p><b>NICHIA</b></p> <p>LED: NVSU233B-D4            FWHM / FWTM: 37.0° / 74.0°            Efficiency: 93 %            Peak intensity: 2.1 cd/lm            LEDs/each optic: 1            Light colour: UV-A            Required components:</p>		
<p><b>OSRAM</b> Opto Semiconductors</p> <p>LED: OSLOM UV 3636 (SU CULDN1.VC)            FWHM / FWTM: 15.0° / 26.0°            Efficiency: 82 %            LEDs/each optic: 1            Light colour: UV-C            Required components:</p> <p style="background-color: #e0e0e0; padding: 5px; text-align: center;">The UVC LED result tolerance is ±10 %</p>		
<p><b>OSRAM</b> Opto Semiconductors</p> <p>LED: OSTAR Projection Compact (Kx.CSLNM1.xx)            FWHM / FWTM: 18.0° / 27.0°            Efficiency: 90 %            Peak intensity: 7.9 cd/lm            LEDs/each optic: 1            Light colour: White            Required components:</p>		



### GENERAL INFORMATION:

NOTE: The typical beam angle will be changed by different color, chip size and chip position tolerance. The typical total beam angle is the full angle measured where the luminous intensity is half of the peak value.

### MATERIALS:

As part of our continuous research and improvement processes, and to ensure the best possible quality and availability of our products, LEDiL reserves the right to change material grades without notice.

### PRODUCT DATA USER AGREEMENT AND DISCLAIMER:

The measured data in the provided downloadable LEDiL Product Datasheets and Mechanical 2D-Drawings is rounded and provided as reference for planning. LEDiL Oy's optical specifications have been verified by conducting performance testing of the products in accordance with the company's quality system. The reported data are averaged results of multiple measurements with typical variation. LEDiL Oy reserves the right to without prior notification make changes and improvements to its products.

LEDiL Oy assumes neither warranty, nor guarantee nor any other liability of any kind for the contents and correctness of the provided data. The provided data has been generated with highest diligence but the provided data may in reality not represent the complete possible variation range of all intrinsic parameters. Therefore, in certain cases a deviation from the provided data could occur.

LEDiL Oy reserves the right to undertake technical changes of its products without further notification which could lead to changes in the provided data. LEDiL Oy assumes no liability of any kind for the possible deviation from any provided data or any other damage resulting from the usage of the provided data.

The user agrees to this disclaimer and user agreement with the download or usage of the provided files.

#### LEDiL Oy

Joensuunkatu 13  
FI-24240 SALO  
Finland

#### LEDiL Inc.

228 West Page Street  
Suite D  
Sycamore IL 60178  
USA

#### Ledil Optics Technology (Shenzhen) Co., Ltd.

# 405 , Block B  
Casic Motor Building  
Shenzhen 518057  
P.R.CHINA

#### Local sales and technical support

[www.ledil.com/  
where\\_to\\_buy](http://www.ledil.com/where_to_buy)

#### Shipping locations

Salo, Finland  
Hong Kong, China

#### Distribution Partners

[www.ledil.com/  
where\\_to\\_buy](http://www.ledil.com/where_to_buy)

## X-ON Electronics

Largest Supplier of Electrical and Electronic Components

*Click to view similar products for [LED Lighting Lenses](#) category:*

*Click to view products by [Ledil](#) manufacturer:*

Other Similar products are found below :

[LL01ED-AK40L06](#) [LL01ZZ-EX25L06-M2](#) [180182-0000](#) [LL01ED-ALI55R49](#) [C14707\\_IDA16-O](#) [LL01ED-AKY24R49](#) [LL01CR-AYG15R49](#) [LL01CR-OT32L06-M2](#) [LL01ZZ-AAA24L49](#) [LL01CR-CEN38L02](#) [LL01ZZ-AAA55L49](#) [LL01CR-AYG24R49](#)  
[LL01A00CZMB2-M2](#) [LL01ED-AKY38R49](#) [LL01CR-CNE2545L06-M2](#) [LL01ZZ-AAA38L49](#) [LL01ED-AKV36R49](#) [LL01ED-ALI24R49](#)  
[LL01CR-AYG38R49](#) [C17171\\_DAISSY-8X1-SHD-MATT](#) [F16859\\_LINDA-ZT25](#) [C17295\\_ILONA-ZOOM](#) [F16636\\_LINDA-W60](#)  
[C16871\\_DAISSY-7X1-W](#) [C18165\\_AMY-35-ZOOM-SUB](#) [10003](#) [10003/15](#) [10048](#) [10049](#) [10108](#) [F14487\\_FLORENCE-1R-MAXI-WG](#) [12667](#)  
[C14605\\_HB-2X2-RW](#) [C14642\\_FLORENCE-1R-UP](#) [CAY033](#) [CAY046/55](#) [OS-LRI2015X45S](#) [OSOLRA2015M](#) [PG1C-NX36](#) [PG1C-SX17](#)  
[PM2A-SXV1](#) [PM2B-NX55-AW](#) [PM6A-FN25](#) [FC2231-0000-0050-L](#) [FC2231-0000-0100-L](#) [C14116\\_STRADA-2X2-PX](#) [C12345\\_HB-5X1-W](#)  
[95-0931](#) [C15800\\_MOLLY-S](#) [C15802\\_MOLLY-W](#)