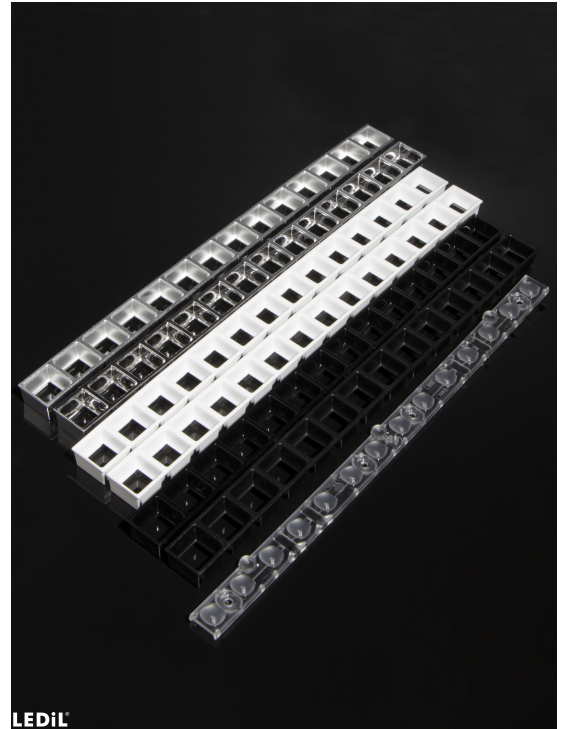


### DAISY-MINI-FT-D

Forward throwing beam for freestanding office luminaires

#### SPECIFICATION:

Dimensions	275.0 x 16.1 mm
Height	6.2 mm
Fastening	pin, screw
ROHS compliant	yes ⓘ



#### MATERIALS:

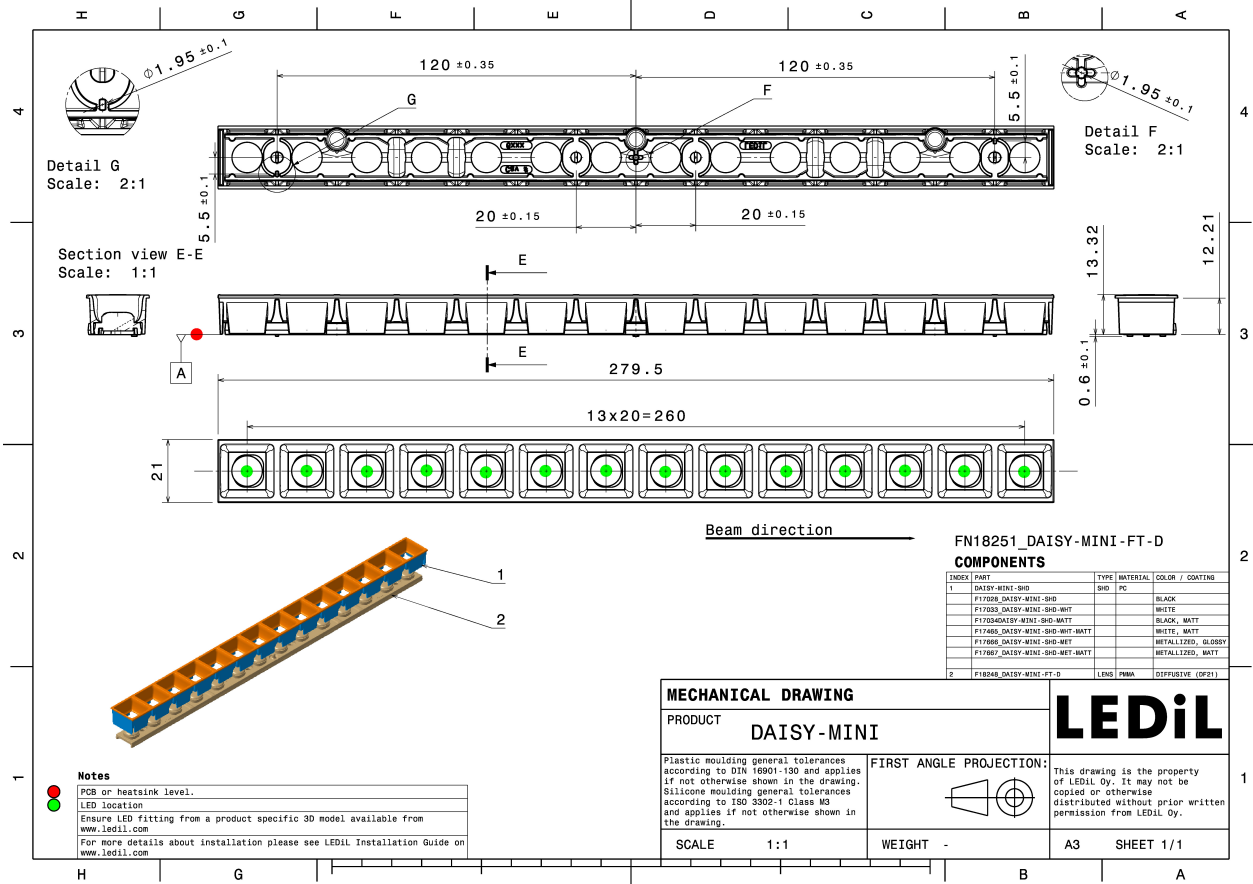
Component	Type	Material	Colour	Finish	Length
F18248_DAISY-MINI-FT-D	Linear lens	PMMA	clear		275.0
F17667_DAISY-MINI-SHD-MET-MATT	Shade	PC	metal	matt	21.0
F17666_DAISY-MINI-SHD-MET	Shade	PC	metal	gloss	20.0
F17465_DAISY-MINI-SHD-WHT-MATT	Shade	PC	white	matt	20.0
F17034_DAISY-MINI-SHD-MATT	Shade	PC	black	matt	20.0
F17033_DAISY-MINI-SHD-WHT	Shade	PC	white	gloss	20.0
F17028_DAISY-MINI-SHD	Shade	PC	black	gloss	20.0

#### ORDERING INFORMATION:

##### Quantities for one set:

Linear lens	1
Shade	1

Component		Qty in box	MOQ	MPQ	Box weight (kg)
F18248_DAISY-MINI-FT-D	Linear lens	252	252	12	6.0
» Box size: 398 x 298 x 265 mm					
F17033_DAISY-MINI-SHD-WHT	Shade	252	252	4	5.9
» Box size: 398 x 298 x 265 mm					
F17034_DAISY-MINI-SHD-MATT	Shade	252	252	4	6.1
» Box size: 398 x 298 x 265 mm					
F17465_DAISY-MINI-SHD-WHT-MATT	Shade	252	252	4	6.2
» Box size: 398 x 298 x 265 mm					
F17666_DAISY-MINI-SHD-MET	Shade	252	252	4	5.9
» Box size: 398 x 298 x 265 mm					
F17028_DAISY-MINI-SHD	Shade	252	252	4	5.9
» Box size: 398 x 298 x 265 mm					
F17667_DAISY-MINI-SHD-MET-MATT	Shade	252	252	4	6.2
» Box size: 398 x 298 x 265 mm					

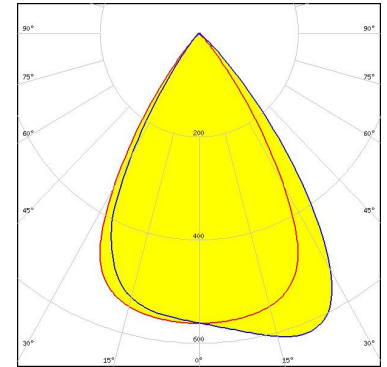


See also our general installation guide: [www.ledil.com/installation\\_guide](http://www.ledil.com/installation_guide)

### OPTICAL RESULTS (MEASURED):

#### SAMSUNG

LED LM28xB Series  
FWHM / FWTM Asymmetric  
Efficiency 69 %  
Peak intensity 0.6 cd/lm  
LEDs/each optic 1  
Light colour/type White  
Required components:  
F17028\_DAISY-MINI-SHD

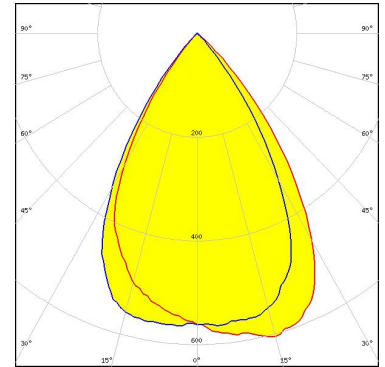


Light distribution files

### OPTICAL RESULTS (SIMULATED):



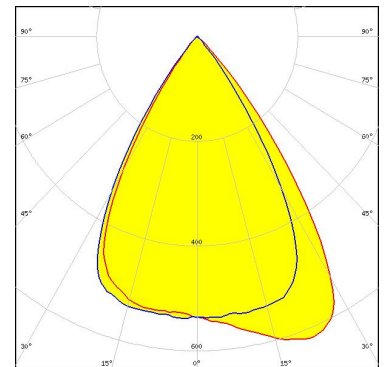
LED LUXEON 5050 Square LES  
FWHM / FWTM Asymmetric  
Efficiency 64 %  
Peak intensity 0.6 cd/lm  
LEDs/each optic 1  
Light colour/type White  
Required components:  
F17028\_DAISY-MINI-SHD



Light distribution files

### SAMSUNG

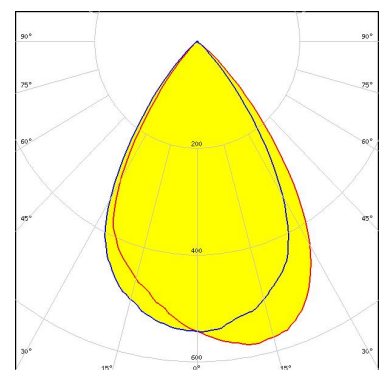
LED LM28xB Series  
FWHM / FWTM Asymmetric  
Efficiency 66 %  
Peak intensity 0.6 cd/lm  
LEDs/each optic 1  
Light colour/type White  
Required components:  
F17028\_DAISY-MINI-SHD



Light distribution files

### SAMSUNG

LED LM28xB Series  
FWHM / FWTM Asymmetric  
Efficiency 61 %  
Peak intensity 0.6 cd/lm  
LEDs/each optic 2  
Light colour/type White  
Required components:  
F17028\_DAISY-MINI-SHD



Light distribution files

### GENERAL INFORMATION:

NOTE: The typical beam angle will be changed by different color, chip size and chip position tolerance. The typical total beam angle is the full angle measured where the luminous intensity is half of the peak value.

### MATERIALS:

As part of our continuous research and improvement processes, and to ensure the best possible quality and availability of our products, LEDiL reserves the right to change material grades without notice.

### PRODUCT DATA USER AGREEMENT AND DISCLAIMER:

The measured data in the provided downloadable LEDiL Product Datasheets and Mechanical 2D-Drawings is rounded and provided as reference for planning. LEDiL Oy's optical specifications have been verified by conducting performance testing of the products in accordance with the company's quality system. The reported data are averaged results of multiple measurements with typical variation. LEDiL Oy reserves the right to without prior notification make changes and improvements to its products.

LEDiL Oy assumes neither warranty, nor guarantee nor any other liability of any kind for the contents and correctness of the provided data. The provided data has been generated with highest diligence but the provided data may in reality not represent the complete possible variation range of all intrinsic parameters. Therefore, in certain cases a deviation from the provided data could occur.

LEDiL Oy reserves the right to undertake technical changes of its products without further notification which could lead to changes in the provided data. LEDiL Oy assumes no liability of any kind for the possible deviation from any provided data or any other damage resulting from the usage of the provided data.

The user agrees to this disclaimer and user agreement with the download or usage of the provided files.

#### LEDiL Oy

Joensuunkatu 13  
FI-24240 SALO  
Finland

#### LEDiL Inc.

228 West Page Street  
Suite D  
Sycamore IL 60178  
USA

#### Ledil Optics Technology (Shenzhen) Co., Ltd.

# 405 , Block B  
Casic Motor Building  
Shenzhen 518057  
P.R.CHINA

#### Local sales and technical support

[www.ledil.com/  
where\\_to\\_buy](http://www.ledil.com/where_to_buy)

#### Shipping locations

Poznan, Poland  
Hong Kong, China

#### Distribution Partners

[www.ledil.com/  
where\\_to\\_buy](http://www.ledil.com/where_to_buy)

## X-ON Electronics

Largest Supplier of Electrical and Electronic Components

*Click to view similar products for [LED Lighting Lenses](#) category:*

*Click to view products by [Ledil](#) manufacturer:*

Other Similar products are found below :

[LL01ZZ-EX25L06-M2](#) [C12231\\_LENA-FRESNEL-LENS](#) [LL01CR-OT32L06-M2](#) [LL01CR-CEN38L02](#) [C17295\\_ILONA-ZOOM](#)  
[2200001315](#) [2200001328](#) [10003](#) [10003/15](#) [10048](#) [10049](#) [10108](#) [10510](#) [12667](#) [C14165\\_STRADA-2X2-ME-WIDE2](#) [C14642\\_FLORENCE-](#)  
[1R-UP](#) [CAY046/55](#) [OS-LRI2015X45S](#) [OSOLRA2015M](#) [PG1C-NX36](#) [PM2A-SXV1](#) [FC2231-0000-0050-L](#) [FC2231-0000-0100-L](#) [2328823-](#)  
[1](#) [C14116\\_STRADA-2X2-PX](#) [OPC11WIDE](#) [OPAA-1-WSL](#) [OPK2-1-003](#) [C11916\\_SATU-S](#) [C15427\\_FLORENTINA-1-SHD-60](#)  
[C15800\\_MOLLY-S](#) [C15802\\_MOLLY-W](#) [F15176\\_ANGELETTE-LENS](#) [F15523\\_LINNEA-90](#) [C16503\\_STRADELLA-16-T3](#)  
[F15524\\_LINNEA-60](#) [10758](#) [10192](#) [10193](#) [10194](#) [10195](#) [10196](#) [10197](#) [10198](#) [10208](#) [10209](#) [10398](#) [10403](#) [10412](#) [10414](#)