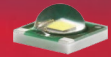


Data Sheet

LL01CR-FT60135L02



Xlamp XP-E



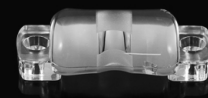
Similar Products(Illuminance Uniformity, Symmetry)



LL01CR-OG85150L02



LL01CR-KM6090L02



LL01OS-AU60130L02

■ Features & Typical Applications

- High efficiency
- Optimized for uniform effect
- Roadway Lighting
- Anti-glare

■ Table of Contents

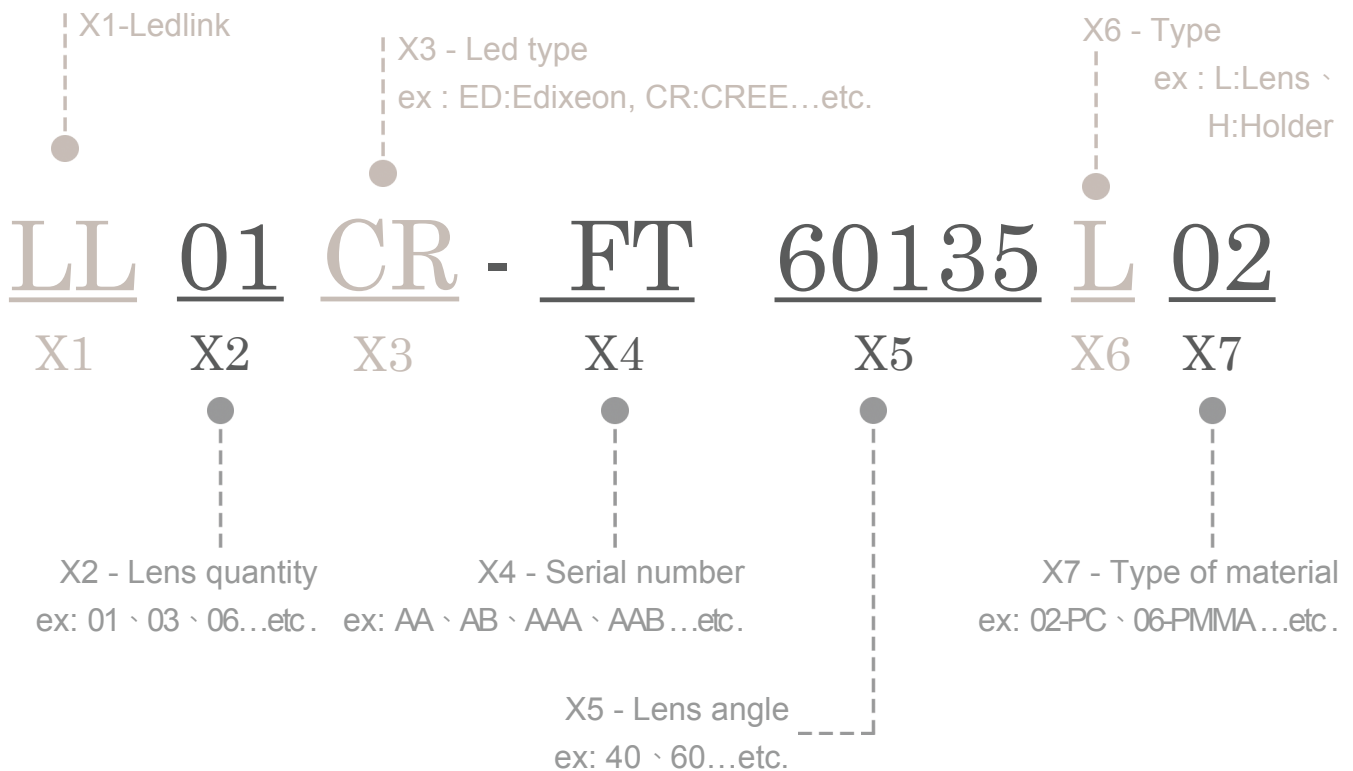
General Information & Product Nomenclature.....	P.2
Optical Specifications	P.3
Mechanical Specifications	P.4
Package Specifications	P.5

LL01CR-FT60135L02

General Information

- Lens Material Optical Grade PC
- Operating Temperature range -40°C~+110°C(upper limit +120°C)
- Storage Temperature range -40°C~+110°C(upper limit +120°C)
 - * Average transmittance in visible spectrum 400nm~700nm>90%
- Usage and Maintenance:
 1. If necessary, clean lenses with mild soap, water and soft cloth.
 2. Never use any commercial cleaning solvents on lenses, like alcohol.
 3. Please handle or install lenses with wearing gloves, skin oils may damage lens or its optical characteristic.

Product Nomenclature



LL01CR-FT60135L02

Optical Specifications

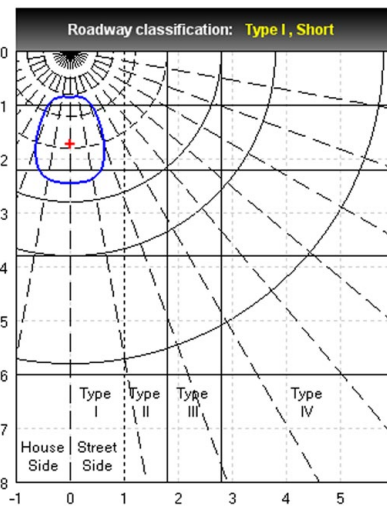
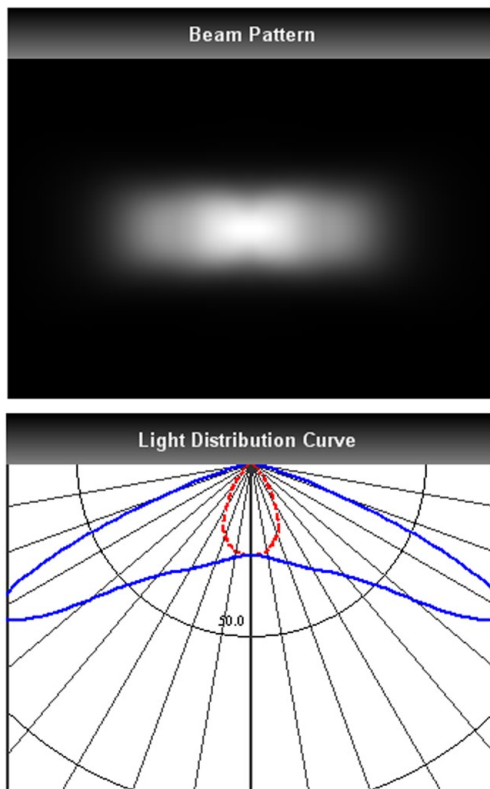


Xlamp XP-E

Note: (1) All the results of analysis are based on 0 degrees of elevation.
 (2) Tolerance: $\pm 10\%$.
 (3) Led Luminous Flux(lm): 100($\pm 5\%$).

IES File: [Download](#)

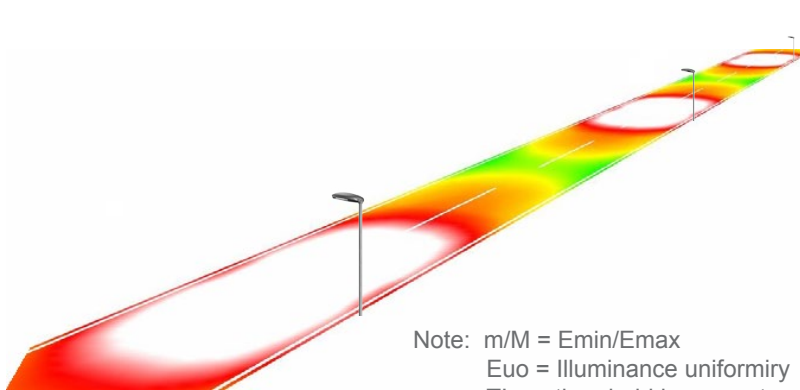
@elevation 0°



Elevation	Roadway Classification
0°	Type I, Short
5°	Type I, Short
10°	Type I, Short
15°	Type II, Short
20°	Type II, Short

DIALux Simulation Result

Analyzed file: [Download](#)



Recommend configuration condition	
Height	= 10m
Distance	= 40m
Roadwidth	= 7m
Elevation	= 0degree
Overhang	= 3.5m
Result	
m/M	= 0.6
E _{uo}	= 0.8
TI	= 8%
SR	= 0.7

*The results would be similar if the configuration conditions are equally magnified or minified.

*This testing result is obtained through testing the popular rank LED samples which provided by the original manufacturer. Hence, the testing results would be varied as the users choose same LED model but different rank.

*The analyzed file require DIALux v4.10 and above to open.

LL01CR-FT60135L02

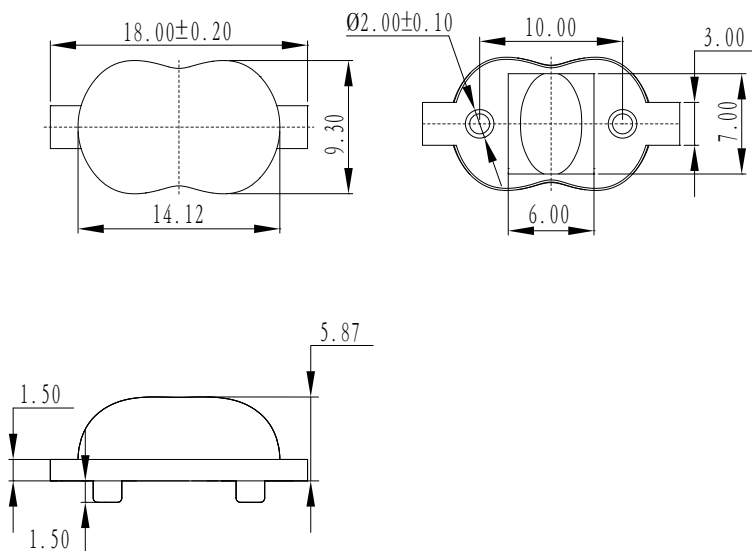
Mechanical Specification

1. Fixing method

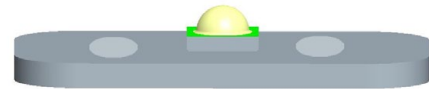
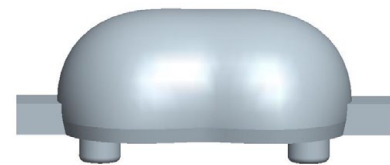
Glue
 Screw
 Tape
 Fixing-ring
 Frame

Note: (1) All dimensions are in mm.
 (2) All measurements are ± 0.15 mm unless otherwise indicated.

2. Lens dimensions

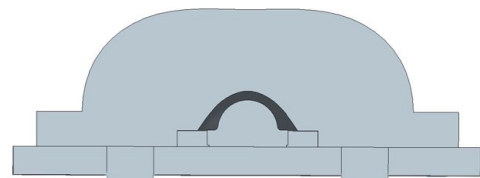


3. Lens + Leds + MCPCB assembly instruction



4. Lens assembly dimensions

5. View assembly lens with MCPCB:



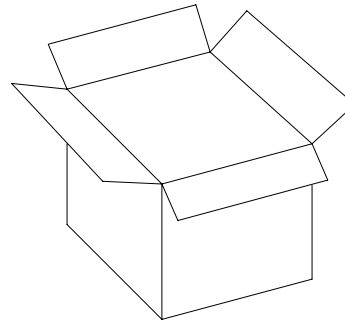
LL01CR-FT60135L02

Package Specifications

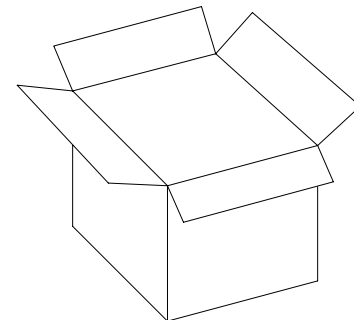
Item	Quantity	Total	Size(L*W*H)	G.W
Inner package	200pcs/plastic vacuum package	200pcs	15*20cm	1.0g
Inner box	40package/Inner box	8000pcs	29*29*22cm	
Outer box	2 Inner box/Outer box	16000pcs	60*31*25.8 cm	



200pcs/Plastic vacuum package



40 package/Inner box



2 Inner box/Outer box



Note:

X-ON Electronics

Largest Supplier of Electrical and Electronic Components

Click to view similar products for [LED Lighting Lenses](#) category:

Click to view products by [LedLink Optics](#) manufacturer:

Other Similar products are found below :

[LL01ED-AK40L06](#) [LL01ZZ-EX25L06-M2](#) [180182-0000](#) [LL01ED-ALI55R49](#) [C14707_IDA16-O](#) [C12231_LENA-FRESNEL-LENS](#)
[LL01ED-AKY24R49](#) [LL01CR-AYG15R49](#) [LL01CR-OT32L06-M2](#) [LL01ZZ-AAA24L49](#) [LL01CR-CEN38L02](#) [LL01ZZ-AAA55L49](#)
[LL01CR-AYG24R49](#) [LL01A00CZMB2-M2](#) [LL01ED-AKY38R49](#) [LL01CR-CNE2545L06-M2](#) [LL01ZZ-AAA38L49](#) [LL01ED-AKV36R49](#)
[LL01ED-ALI24R49](#) [LL01CR-AYG38R49](#) [C17171_DAISSY-8X1-SHD-MATT](#) [F16859_LINDA-ZT25](#) [C17295_ILONA-ZOOM](#)
[F16636_LINDA-W60](#) [C17362_DAISSY-7X1-W-D](#) [C17361_DAISSY-7X1-WW-D](#) [10003](#) [10003/15](#) [10048](#) [10049](#) [10108](#) [10510](#)
[F14487_FLORENCE-1R-MAXI-WG](#) [12667](#) [C14165_STRADA-2X2-ME-WIDE2](#) [C14605_HB-2X2-RW](#) [C14642_FLORENCE-1R-UP](#)
[CAY033](#) [CAY046/55](#) [FCX11157_RES-O-90](#) [OS-LRI2015X45S](#) [OSOLRA2015M](#) [PG1C-NX36](#) [PG1C-SX17](#) [PM2A-SXV1](#) [PM2B-NX55-](#)
[AW](#) [PM6A-FN25](#) [FC2231-0000-0050-L](#) [FC2231-0000-0100-L](#) [C14116_STRADA-2X2-PX](#)