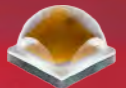


Data Sheet

LL04CR-CGM85135L02



LED Solution Provider



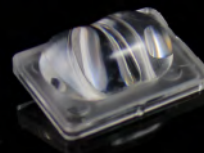
XP-L



Similar Products(Brightness Uniformity, Assymetry, Elevation needed)



LL01CR-AU85135L02



LL01CR-BAJ85135L02

Features & Typical Applications

- High efficiency
- Roadway Lighting
- Optimized for uniform effect

Table of Contents

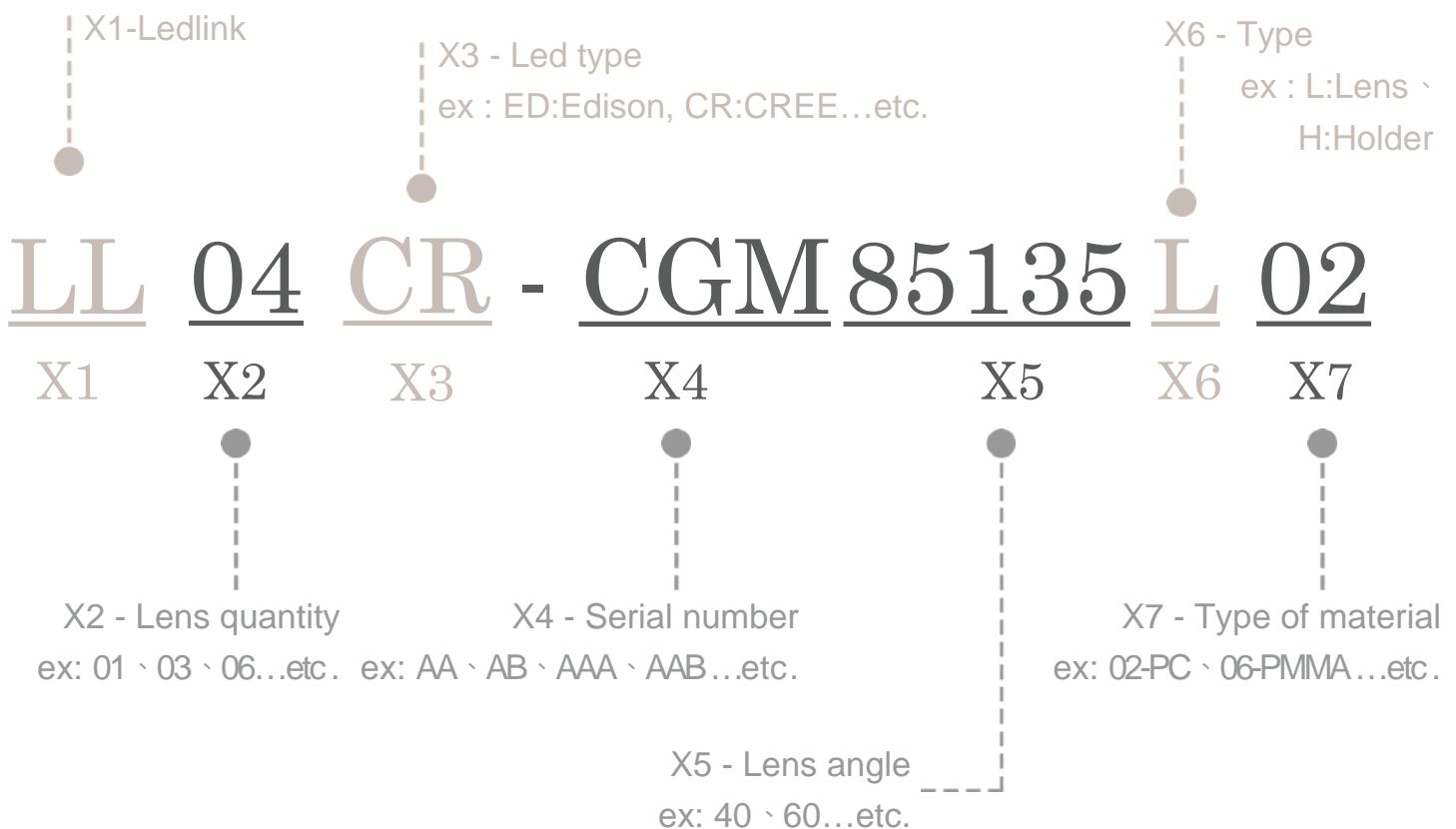
General Information & Product Nomenclature.....	P.2
Optical Specifications	P.3
Mechanical Specifications	P.4
Package Specifications	P.5

LL04CR-CGM85135L02

General Information

- Lens Material : PC LEV1700
- Operating Temperature range -40°C~+110°C(upper limit +120°C).
- Storage Temperature range -40°C~+110°C(upper limit +120°C).
 - * Average transmittance in visible spectrum 400nm~700nm>90%.
- Usage and Maintenance:
 1. If necessary, clean lenses with mild soap, water and soft cloth.
 2. Never use any commercial cleaning solvents on lenses, like alcohol.
 3. Please handle or install lenses with wearing gloves, skin oils may damage lens or its optical characteristic.

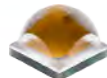
Product Nomenclature



LL04CR-CGM85135L02 Optical Specifications



LED Solution Provider

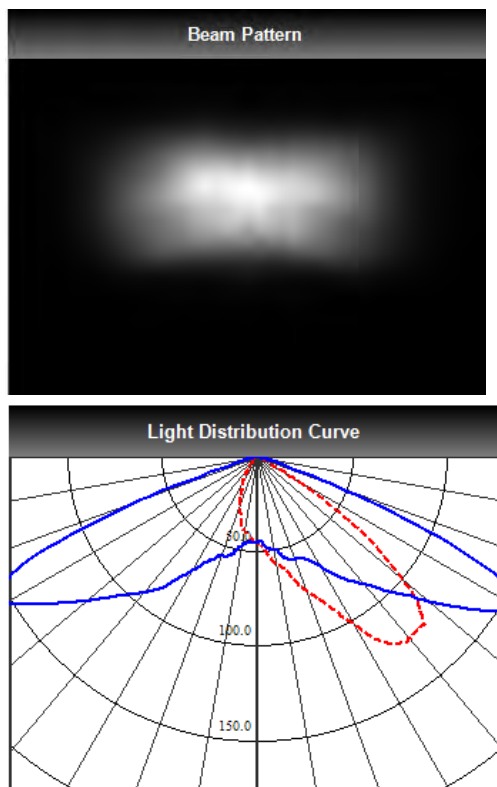


XP-L

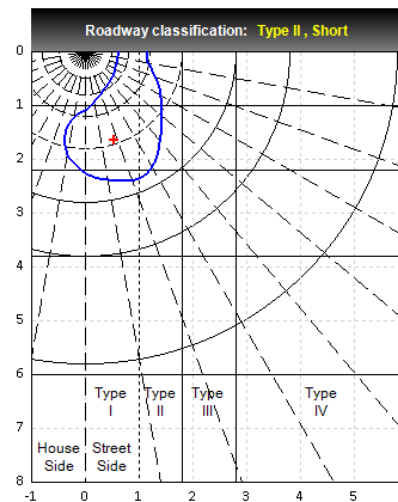
Note: (1) All the results of analysis are based on 10 degrees of elevation.
(2) Tolerance: $\pm 10\%$.
(3) Led Luminous Flux(lm): 334($\pm 5\%$).

IES File: [Download](#)

@elevation 15°



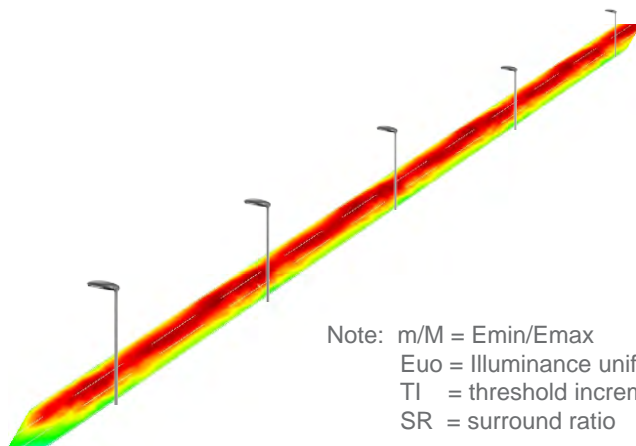
---C0-0-180 —C1-90-270



Elevation	Roadway Classification
0°	Type I, Short
5°	Type I, Short
10°	Type II, Short
15°	Type II, Short
20°	Type II, Short

DIALux Simulation Result

Analyzed file: [Download](#)



Note: $m/M = E_{min}/E_{max}$
 E_{uo} = Illuminance uniformity
 TI = threshold increment
 SR = surround ratio

Recommend configuration condition	
Height	= 10m
Distance	= 30m
Roadwidth	= 10.5m
Elevation	= 15degree
Overhang	= 1m
Result	
m/M	= 0.6
E_{uo}	= 0.75
TI	= 3%
SR	= 0.5

*The results would be similar if the configuration conditions are equally magnified or minified.

*This testing result is obtained through testing the popular rank LED samples which provided by the original manufacturer. Hence, the testing results would be varied as the users choose same LED model but different rank.

*The analyzed file require DIALux v4.11 and above to open.

LL04CR-CGM85135L02

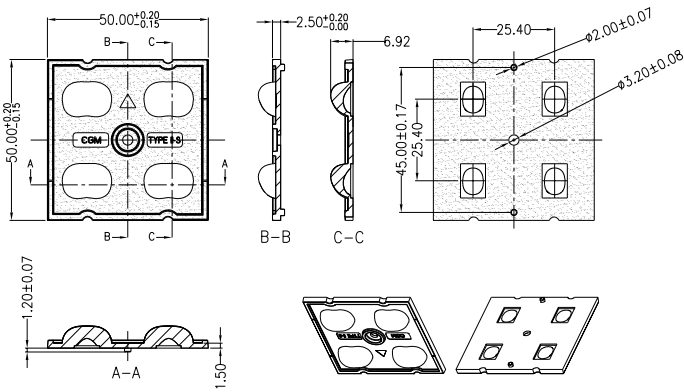
Mechanical Specification

1. Fixing method

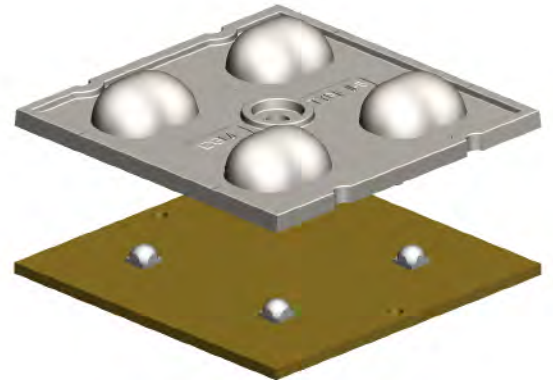
- Glue
 Screw
 Tape
 Fixing-ring
 Frame

Note: (1) All dimensions are in mm.
 (2) All measurements are ± 0.15 mm unless otherwise indicated.

2. Lens dimension



3. Lens + Leds + MCPCB assembly instruction



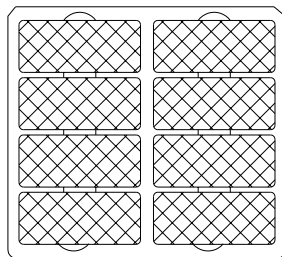
4. Assembly dimension

5. View assembly lens with MCPCB:



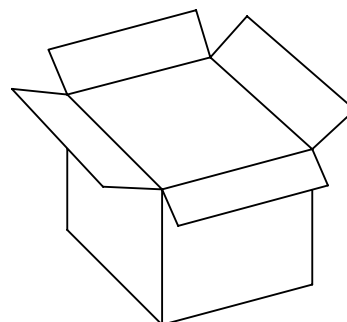
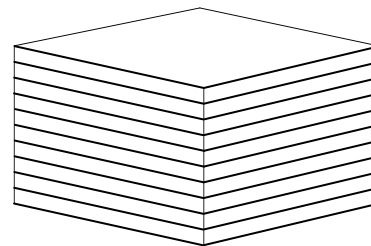
LL04CR-CGM85135L02 Package Specifications

Item	Quantity	Total	Size(L*W*H)	G.W
plastic box	48 pcs/plastic box	48 pcs	32*29*1.75 cm	7g
outer box	9 plastic box/outer box	432 pcs	35*31*21 cm	



LL-0989

48 pcs/plastic box



432 pcs/outer box



Note:

X-ON Electronics

Largest Supplier of Electrical and Electronic Components

Click to view similar products for [LED Lighting Reflectors](#) category:

Click to view products by [LedLink Optics](#) manufacturer:

Other Similar products are found below :

[LL04CR-CFN35155L02](#) [LL04CR-CFN60155L02](#) [LL04CR-CGM85135L02](#) [F13185_GERI-RZ](#) [10604](#) [LL01SP-ATH15R49](#) [10170](#) [12527](#)
[12531](#) [12568](#) [C13253_TINA2-R-CLIP16](#) [CA14591_BROOKE-XW](#) [F15560_MIRELLA-G2-W](#) [CA11525_LAURA-R-W](#) [12796](#) [LMH020-](#)
[REFL-0000-0000062](#) [LMH020-REFL-0000-0000082](#) [C12606_LENINA-DL](#) [CN12711_LENINA-W-DL](#) [C11394_TYRA-S](#) [C11396_TYRA-](#)
[W](#) [C11508_BROOKE-W](#) [C11552_BARBARA-S](#) [C11553_BARBARA-W](#) [C11862_MINNIE-W](#) [C11979_LENA-S](#) [C11980_LENA-W](#)
[C11996_LENA-LENS](#) [C12083_BROOKE-SCR-M](#) [C12095_MINNIE-M](#) [C12097_MINNIE-WWW](#) [C12154_LENA-M](#) [C12469_LISA2-R-](#)
[PIN](#) [C12476_MIRELLA-50-S](#) [C12477_MIRELLA-50-M](#) [C12480_MIRELLA-50-S-PIN](#) [C12516_RITA-WAS](#) [C12597_LENINA-S](#)
[C12599_LENINA-W](#) [C12948_LENA-WAS](#) [C12958_LENINA-XW](#) [C13085_MIRELLA-50-S-PF](#) [C13087_MIRELLA-50-W-PF](#)
[C13101_LENA-X-WAS](#) [C13555_BRIDGET-W-UNI](#) [C13556_BRIDGET-M-UNI](#) [C13557_BRIDGET-S-UNI](#) [C14346_ANGELETTE-WAS](#)
[C17099_ALISE-50-DL](#) [C17095_ALISE-70-CL](#)