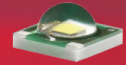


Data Sheet

LL28CR-UI65140L02



Xlamp XP-E



Similar Products(Brightness Uniformity, Assymetry, Elevation needed)



LL01ZZ-AGX45155L02



LL01LU-AEV50150L02

■ Features & Typical Applications

- High efficiency
- Optimized for uniform effects
- Street Lights

■ Table of Contents

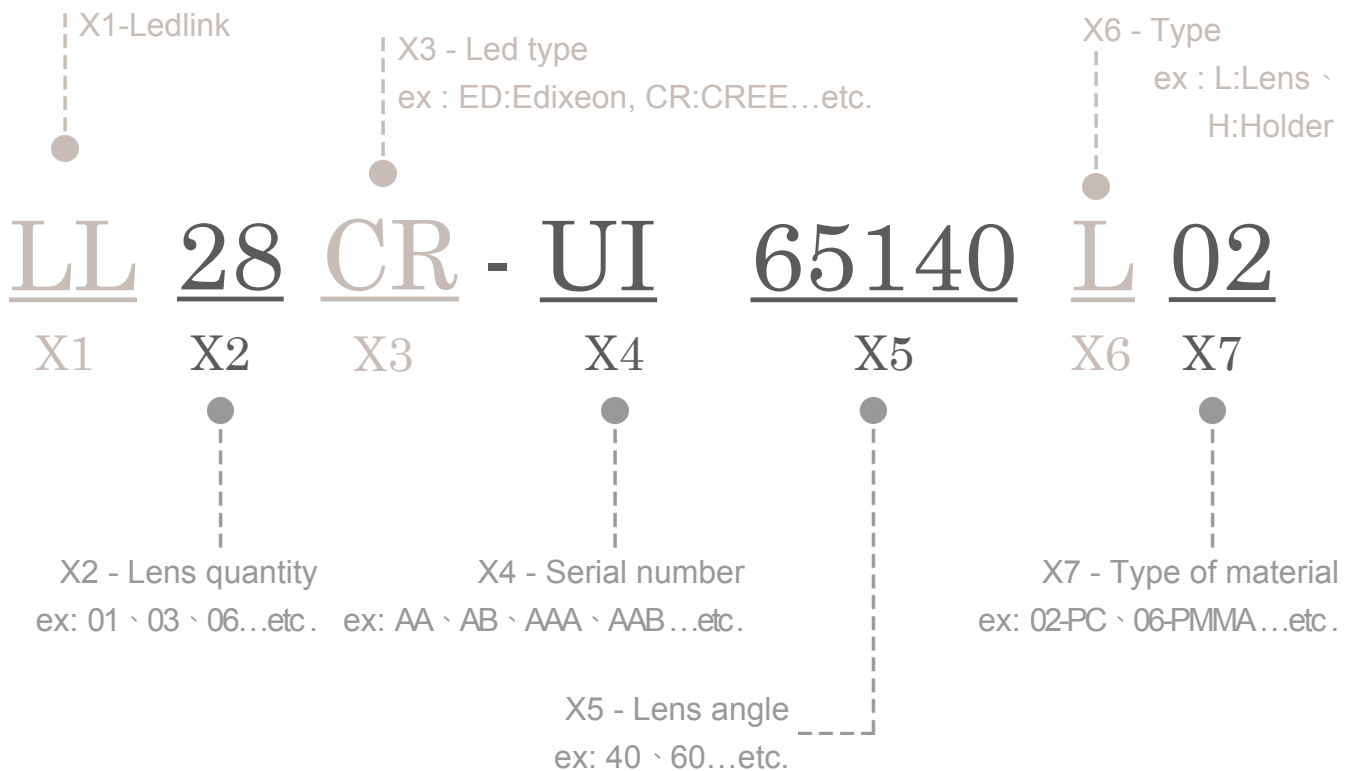
General Information & Product Nomenclature.....	P.2
Optical Specifications	P.3
Mechanical Specifications	P.4
Package Specifications	P.5

LL28CR-UI65140L02

General Information

- Lens Material Optical Grade PC
- Operating Temperature range -40°C~+110°C(upper limit +120°C)
- Storage Temperature range -40°C~+110°C(upper limit +120°C)
 - * Average transmittance in visible spectrum 400nm~700nm>90%
- Usage and Maintenance:
 1. If necessary, clean lenses with mild soap, water and soft cloth.
 2. Never use any commercial cleaning solvents on lenses, like alcohol.
 3. Please handle or install lenses with wearing gloves, skin oils may damage lens or its optical characteristic.

Product Nomenclature



LL28CR-UI65140L02

Optical Specifications

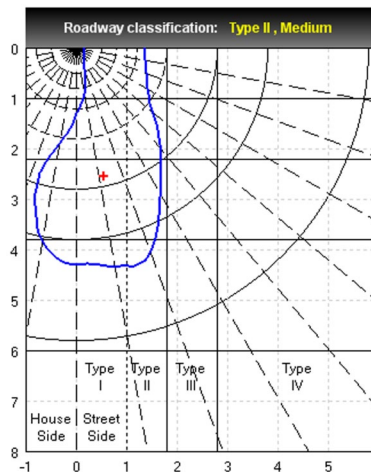
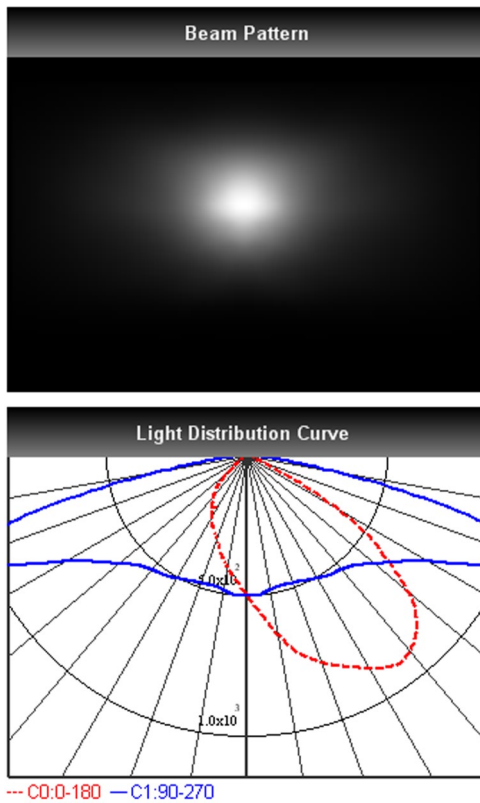


Xlamp XP-E

Note: (1) All the results of analysis are based on 0 degrees of elevation.
 (2) Tolerance: $\pm 10\%$.
 (3) Led Luminous Flux(I_m): 100($\pm 5\%$).

IES File: [Download](#)

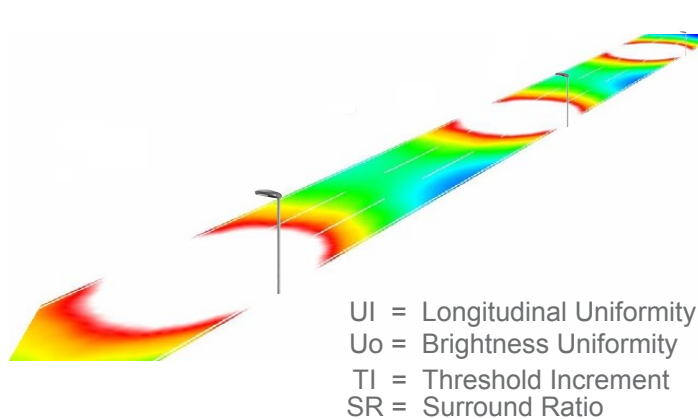
@elevation 10°



Elevation	Roadway Classification
0°	Type II, Short
5°	Type II, Medium
10°	Type II, Medium
15°	Type III, Medium
20°	Type III, Medium

DIALux Simulation Result

Analyzed file: [Download](#)



Recommend configuration condition	
Height	= 10m
Distance	= 40m
Roadwidth	= 10.5m
Elevation	= 10degree
Overhang	= 2m
Result	
UI	= 0.8
Uo	= 0.5
TI	= 15%
SR	= 0.6

*The results would be similar if the configuration conditions are equally magnified or minified.

*This testing result is obtained through testing the popular rank LED samples which provided by the original manufacturer. Hence, the testing results would be varied as the users choose same LED model but different rank.

*The analyzed file require DIALux v4.10 and above to open.

LL28CR-UI65140L02

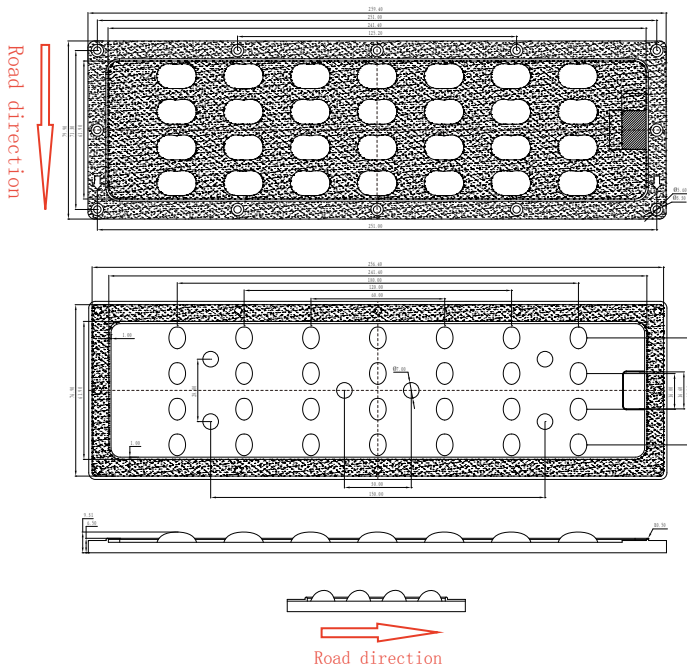
Mechanical Specification

1. Fixing method

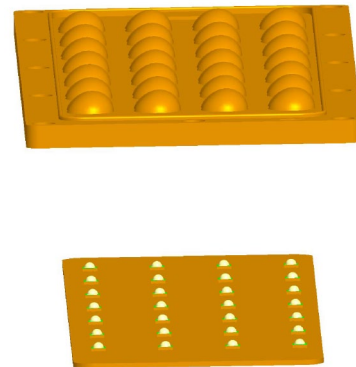
- Glue Screw Tape Fixing-ring Frame

Note: (1) All dimensions are in mm.
 (2) All measurements are ± 0.15 mm unless otherwise indicated.

2. Lens dimensions



3. Lens + Leds + MCPCB assembly instruction



4. Lens assembly dimensions

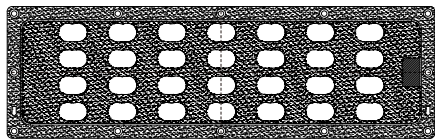
5. View assembly lens with MCPCB:



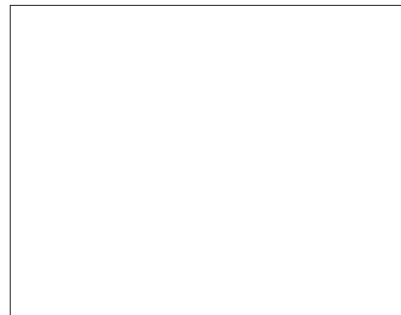
LL28CR-UI65140L02

Package Specifications

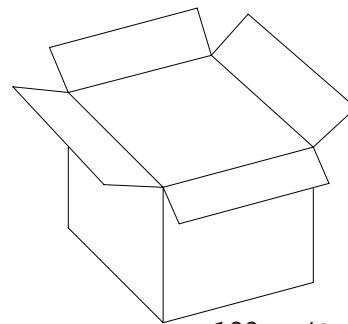
Item	Quantity	Total	Size(L*W*H)	G.W
Inner bag	1 pcs/Inner bag	1 pcs	10*4 cm	82g
Outer bag	5 pcs/Outer bags	5 pcs	38*36 cm	
Outer box	100 pcs/box	100 pcs	40*37*21 cm	



1pcs/Inner bag



5 pcs/Outer bag



100pcs/Outer box



Note:

X-ON Electronics

Largest Supplier of Electrical and Electronic Components

Click to view similar products for [LED Lighting Lenses](#) category:

Click to view products by [LedLink Optics](#) manufacturer:

Other Similar products are found below :

[LL01ED-AK40L06](#) [LL01ZZ-EX25L06-M2](#) [180182-0000](#) [LL01ED-ALI55R49](#) [C14707_IDA16-O](#) [C12231_LENA-FRESNEL-LENS](#)
[LL01ED-AKY24R49](#) [LL01CR-AYG15R49](#) [LL01CR-OT32L06-M2](#) [LL01ZZ-AAA24L49](#) [LL01CR-CEN38L02](#) [LL01ZZ-AAA55L49](#)
[LL01CR-AYG24R49](#) [LL01A00CZMB2-M2](#) [LL01ED-AKY38R49](#) [LL01CR-CNE2545L06-M2](#) [LL01ZZ-AAA38L49](#) [LL01ED-AKV36R49](#)
[LL01ED-ALI24R49](#) [LL01CR-AYG38R49](#) [C17171_DAISSY-8X1-SHD-MATT](#) [F16859_LINDA-ZT25](#) [C17295_ILONA-ZOOM](#)
[F16636_LINDA-W60](#) [C17362_DAISSY-7X1-W-D](#) [C17361_DAISSY-7X1-WW-D](#) [10003](#) [10003/15](#) [10048](#) [10049](#) [10108](#) [10510](#)
[F14487_FLORENCE-1R-MAXI-WG](#) [12667](#) [C14165_STRADA-2X2-ME-WIDE2](#) [C14605_HB-2X2-RW](#) [C14642_FLORENCE-1R-UP](#)
[CAY033](#) [CAY046/55](#) [FCX11157_RES-O-90](#) [OS-LRI2015X45S](#) [OSOLRA2015M](#) [PG1C-NX36](#) [PG1C-SX17](#) [PM2A-SXV1](#) [PM2B-NX55-](#)
[AW](#) [PM6A-FN25](#) [FC2231-0000-0050-L](#) [FC2231-0000-0100-L](#) [C14116_STRADA-2X2-PX](#)