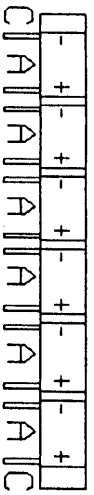
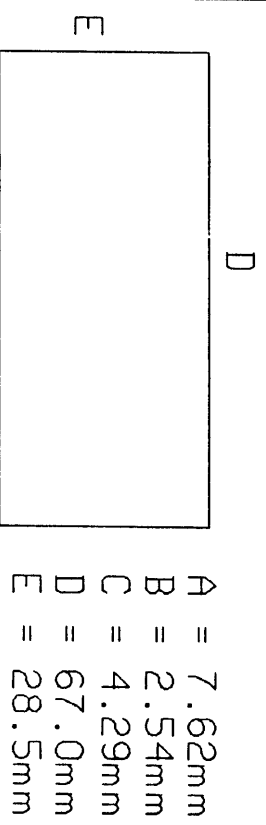
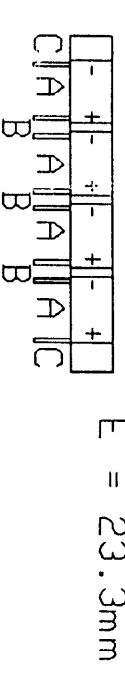
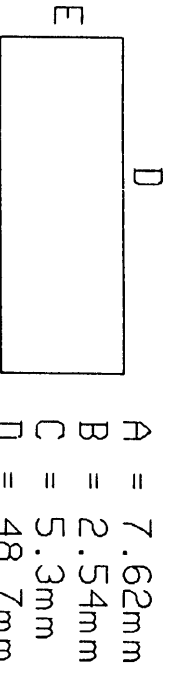
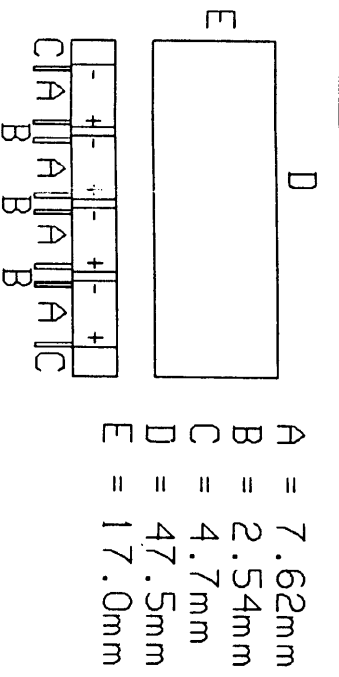


254 162 To 254 198

DATA SHEET LED TECHNOLOGY LTD BACKLIGHT ASSEMBLY

FBL 01 A/B	LED TECHNOLOGY LTD BACKLIGHT ASSEMBLY			OPERATING TEMPERATURE FOR COMPLETE ASSEMBLY
MAX RATINGS @ 25deg C	TECHNICAL SPECIFICATION			OPERATING TEMPERATURE FOR COMPLETE ASSEMBLY
PARAMETER PER EMITTER	RED	GREEN	UNIT	-20deg C to +55deg C
REVERSE VOLTAGE $V_r$	6	10	V	STORAGE TEMPERATURE FOR COMPLETE ASSEMBLY
AVERAGE FORWARD CURRENT $I_f$	25	25	ma	-20deg C to +60deg C
PEAK FORWARD CURRENT $I_{p, SEC PULSE, 0.3\% DUTY CYCLE}$	$I_{fsm}$ 1000	1000	ma	SOLDERING TEMPERATURE + 260deg C MAXIMUM
POWER DISSIPATION $P_t$	100	85	mw	SOLDERING TIME 5 SEC MAXIMUM
DERATE LINEARLY FROM 30deg C	0.45	0.45	mv/deg C	
ELECTRICAL/OPTICAL CHARACTERISTICS (T <sub>a</sub> =25deg C: I <sub>f</sub> =20ma				
FORWARD VOLTAGE $V_f$ TYPICAL	3.4	4.2	V	CLEANING AGENT ONLY USE ALCOHOL BASED SUBSTANCE SUCH AS ISOPROPANOL
$V_f$ MAXIMUM	4	6	V	
REVERSE CURRENT $I_r$	100 @ $V_r = 6v$	100 @ $V_r = 10v$	$\mu A$	
PEAK WAVELENGTH	655	567	nm	AVOID BENDING OR PREFORMING OF LED LEGS TO REDUCE STRAIN ON LED LEAD FRAME
SPECTRAL LINE HALFWIDTH	45	50	nm	

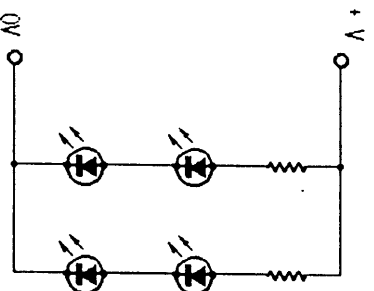
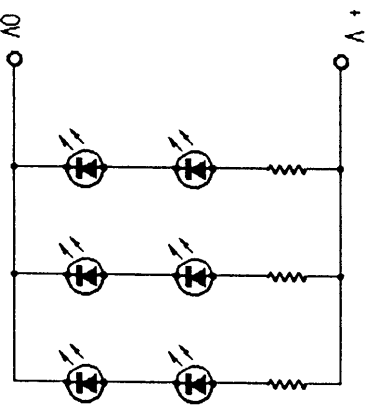
ITEM	COLOUR	PART NUMBER	F.E.C. CODE
1	GREEN	LTR 24 S36 04 YG	254-162
2	GREEN RED	LTR 24 S38 04 YG LTR 74 S38 04 R	254-174 254-186
3	GREEN	LTR 24 S37 06 YG	254-198



CIRCUIT DIAGRAMS

6 LED TYPE

4 LED TYPE



NOTE :  
DIMENSIONS "D & E "  
TOLERANCES +/- 0.3mm  
PANEL THICKNESS 3.0mm +/- 0.3mm

## **X-ON Electronics**

Largest Supplier of Electrical and Electronic Components

*Click to view similar products for [led technology manufacturer](#):*

Other Similar products are found below :

[L02R5000Q1](#) [LTR24S3706YG](#) [BRURS3804TE](#) [FDC003](#) [LTR74S3804R](#) [L02R3000F1](#) [LT1802-24](#) [L08R5000Q1](#) [L03R5000Q1](#)  
[L4RR5000E1](#)