



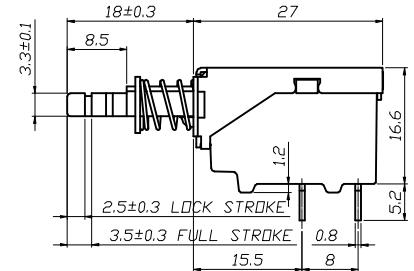
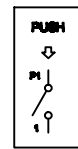
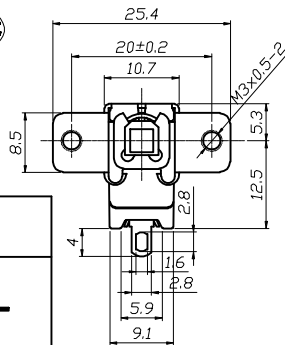
**PUSH SWITCH**

**MPS11 SERIES**



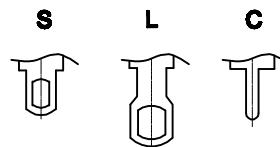
**SPECIFICATION**

Rating: 16A 125VAC (UL, CSA)  
 10A 250VAC (UL, CSA)  
 TV-5(UL, CSA)  
 16A 250VAC(CQC)  
 5/80A 250V~μT85(ENEC10, VDE, NEMKO, CQC)  
 INITIAL CONTACT RESISTANCE: 20mΩ Max  
 OPERATION FORCE: 500±200gf  
 INSULATION RESISTANCE: 100mΩ MIN 500VDC  
 WITHSTAND VOLTAGE: 1000VAC FOR 1MINUTE  
 ENDURANCE: 10,000 CYCLES



TERMINAL TYPE	
S	STANDARD TERMINAL SOLDERING TYPE
C	PCB. TYPE
L	LONG TERMINAL SOLDERING TYPE

**Terminal List**



**MPS11 SERIES ORDERING SYSTEM**

**MPS11 - M S 1 8 O - M 3 - R**

MODEL NO.

BRACKET TYPE			
M	SCREW TYPE M3x0.5	H	HOLE TYPE Ø3.2
N	SCREW+PCB TYPE M3x0.5	F	HOLE TYPE Ø3.5
P	PCB. TYPE	J	SCREW TYPE M3x0.5/8A ONLY
I	HOLE+PCB TYPE Ø3.2		

ACTUATOR LENGTH	
18	18mm
15	14.5mm
11	11mm

OPERATING CODE	
M	MOMENTARY
	PUSH LOCK

RoHS DIRECTIVE	
R	MEET RoHS DIRECTIVE
	NONE

ACTUATOR COLOR	
O	ORANGE

OPERATING FORCE	
	500±200gf
3	400±150gf

TERMINAL TYPE	
S	STANDARD TERMINAL SOLDERING TYPE
C	PCB. TYPE
L	LONG TERMINAL SOLDERING TYPE

## X-ON Electronics

Largest Supplier of Electrical and Electronic Components

*Click to view similar products for [Pushbutton Switches](#) category:*

*Click to view products by [Legion](#) manufacturer:*

Other Similar products are found below :

[8971K1133](#) [LW1L-M1C10V-A](#) [LW2L-M1C20M-A](#) [M22-D-R-GB0/K11](#) [67081K512X](#) [701PB580](#) [7199K101](#) [810K12910](#) [810KSV30B](#)  
[FLT 2U EE 01A](#) [MML21EA2ADK](#) [MML21KA3ABK](#) [MML23KA3AC05K-001](#) [MML23KW3AA01W](#) [8418K2](#) [8442K2](#) [8442K3](#) [8450K1](#)  
[860K11911T01A](#) [861901](#) [861K11911T01A07](#) [861K13810T00A14](#) [861K13911](#) [8646AB6X718UL](#) [8646ABUL](#) [9001KXRK](#)  
[9533CD4+U574+U4922](#) [95-414.000](#) [99-450.837](#) [99-453.837](#) [PV3H2B0NN-341](#) [A22NZBGANGA](#) [A22NZBMMNGA](#) [A22NZBNANGA](#)  
[A22NZMPATRA](#) [A2PMA1X03EC56](#) [A3A-7310](#) [A3A-7340](#) [A3U-TMW-A2C-5M](#) [12037A2ULCSA](#) [1203A2UL](#) [ABGW410-R](#) [ABN400-R](#)  
[121382](#) [1213C3](#) [HE3B-M2](#) [121194](#) [1212MRA](#) [1232A6NF](#) [1241.1183.7047](#)