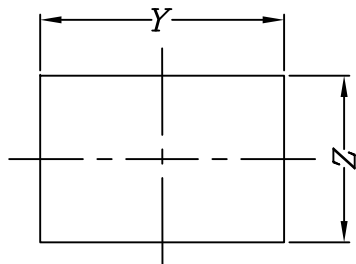


NOTES:

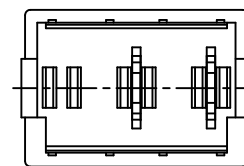
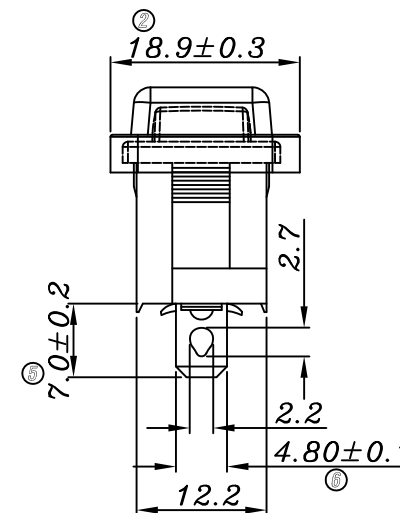
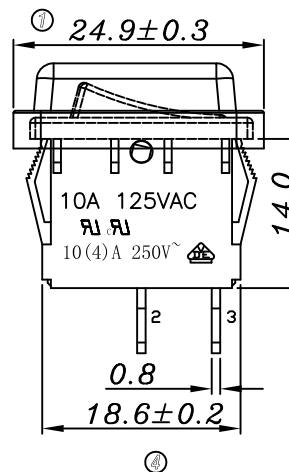
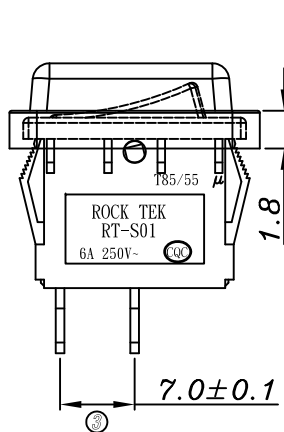
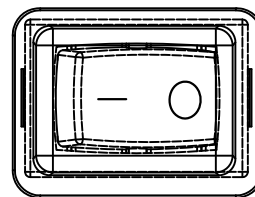
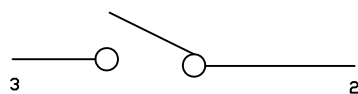
- 1.Circuit: ON/OFF
- 2.Operation force: 500 ± 200 gf
- 3.Electrical rating: 10(4)A 250V~ (VDE)
 10A 125V~ (UL CUL ; CQC)
 6A 250V~ (UL CUL ; CQC)
- 4.Contact resistance: < 50 m Ω
- 5.Insulation resistance: > 100 M Ω (500VDC
 between open contacts)
- 6.Dielectric strength: > 1500 VAC 0.5mA 1 minute
- 7.Color: cover is black, body is black

Panel cut - out:

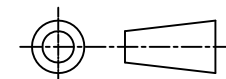
X	Dim.Y	Dim.Z
0.75~1.25mm	19.20+0.1/-0	12.80+0.1/-0
1.25~2.0mm	19.30+0.1/-0	12.80+0.1/-0



Circuit of Switch



NO	DESCRIPTION	NO	DESCRIPTION	DIMENSIONAL TOLERANCES		APPROVED	CHECKED	DESIGN	DRAWN	ALL SIZE ARE IN		MM				
				RANGE	TOLERANCE					SCALE	FIT					
5	→	10	→	X	±0.4	LMC 2017.08.12 ROCK TEK ELECTRICAL(SHENZHEN) CO.,LTD.				MAT'L	***	DRAWING NO.	REV			
4	→	9	→	X.X	±0.3					MATERIAL NO.	RT-S01-113-LANBBC			WIF119173	A0	
3	→	8	→	X.XX	±0.2											
2	→	7	→	ANGLES	±0.5°											
1	→	6	→													



X-ON Electronics

Largest Supplier of Electrical and Electronic Components

Click to view similar products for [Rocker Switches](#) category:

Click to view products by [Legion](#) manufacturer:

Other Similar products are found below :

[LTILA6E-1S-WH-RC-FN12VXCR1](#) [6-1571986-9](#) [8007K26N324V52](#) [8055K23Z7V](#) [8055K32Z7V](#) [8055K52Z7V](#) [8138K20E6M50](#)
[PREDD4-07F-BB0FW](#) [PREDD5-07F-BB0GW](#) [999-16716-002](#) [A101J1V3Q004](#) [A103J1ZQ004](#) [A201J1AQ004](#) [A201J50ZQ004](#)
[H8653VBBG2577W](#) [HB130CHNWWNAAC](#) [R13112ABB-602W](#) [1251.0303](#) [1352.0107](#) [1500G51E](#) [1571099-3](#) [1571987-4](#) [1571987-5](#)
[1571988-5](#) [B123J77V7B2](#) [160212E](#) [1634200-7](#) [1801.1164](#) [PANEL-PLUG-VHP-BLACK](#) [PANEL-PLUG-VHP-WT](#) [K2ABAAAAAA](#)
[250011E714](#) [2600R21E](#) [260413E](#) [2639LH/2A7/127000L0](#) [LL3AZXX-100-XGT1](#) [LL3AZXX-100-XHS1](#) [LL3AZXX-100-XSD1](#) [30-695B](#)
[160311E](#) [A103J3ZQ004](#) [A201J61ZQ0004](#) [1852.1102](#) [1890.1104](#) [191.081.011](#) [AE107J1AQ004](#) [1935.3128](#) [1935.3133](#) [1MR7-B](#)
[SY236CD6U622](#)