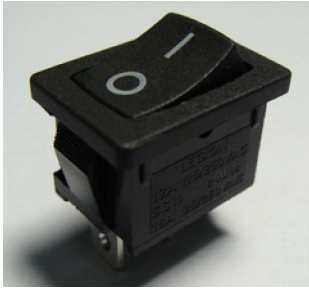




ROCKER SWITCH

SS11 SERIES



**SPECIFICATION**

Rating:12A 125/250VAC(CUL)

16A 125/250VAC(CUL)

16(4)A 250V~T125/55(ENEC10,VDE,CQC)

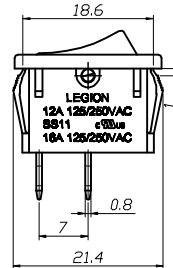
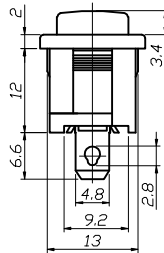
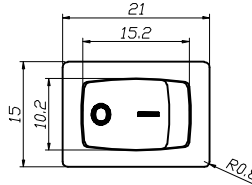
INITIAL CONTACT RESISTANCE:20mΩ Max

OPERATION FORCE:500±200gf

INSULATION RESISTANCE:100mΩ MIN 500VDC

WITHSTAND VOLTAGE:1000VAC FOR 1MINUTE

ENDURANCE:10,000CYCLES



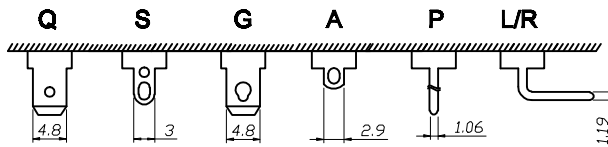
TERMINAL TYPE		
Q	QUICK-CONN	
S	SOLDERING	
G	QUICK-CONN	
A	SOLDERING	
P	PC TYPE	
L	PC TYPE	

**CURRENT CIRCUIT**



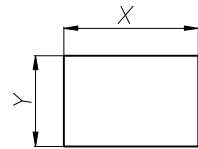
20	ON	-	OFF	SPST
21	(ON)	-	OFF	SPST
22	ON	-	(OFF)	SPST
23	ON		OFF	SPST
30	ON		ON	SPDT

**Terminal List**

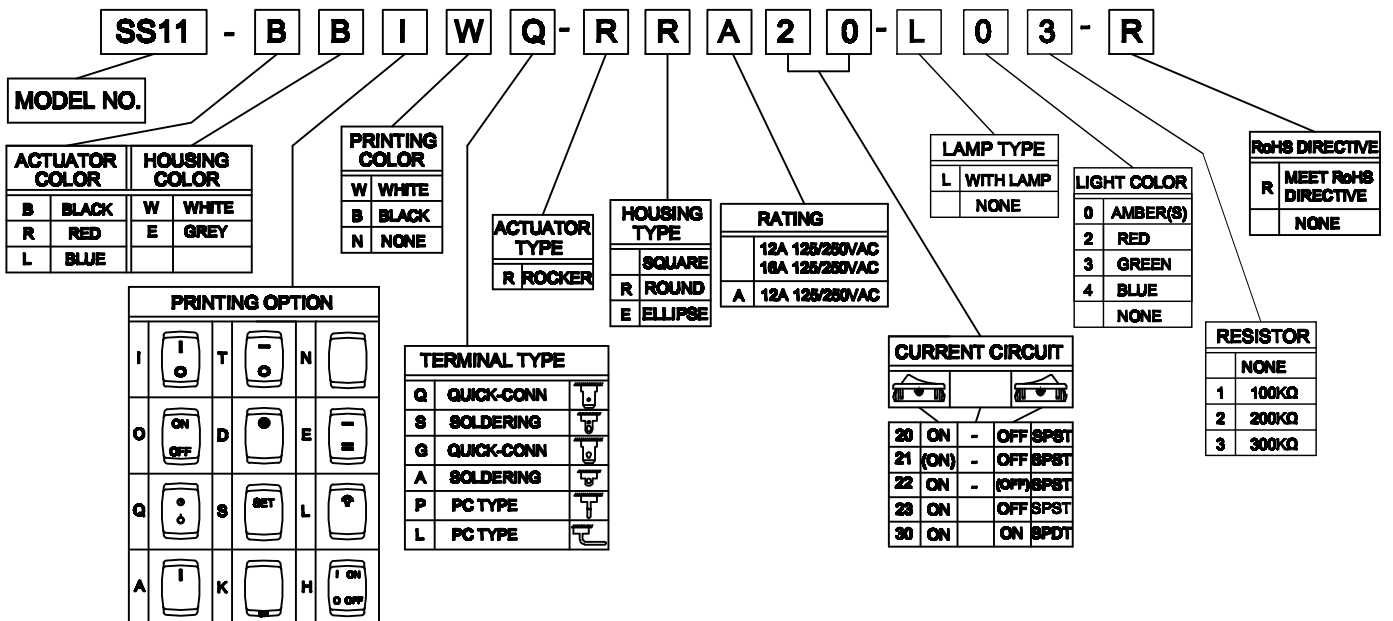


**PANEL CUTOUT DIMENSION**

PANEL THICKNESS	X	Y
0.8~1.2mm	19.2 <sup>+0</sup> <sub>-0.1</sub> mm	12.9 <sup>+0.1</sup> <sub>0</sub> mm
1.3~2.0mm	19.4 <sup>+0</sup> <sub>-0.1</sub> mm	12.9 <sup>+0.1</sup> <sub>0</sub> mm
2.1~2.5mm	19.8 <sup>+0</sup> <sub>-0.1</sub> mm	12.9 <sup>+0.1</sup> <sub>0</sub> mm



**SS11 SERIES ORDERING SYSTEM**



## X-ON Electronics

Largest Supplier of Electrical and Electronic Components

*Click to view similar products for [Rocker Switches](#) category:*

*Click to view products by [Legion](#) manufacturer:*

Other Similar products are found below :

[LTILA6E-1S-WH-RC-FN12VXCR1](#) [6-1571986-9](#) [8055K23Z7V](#) [8055K52Z7V](#) [8138K20E6M50](#) [PREDD5-07F-BB0GW](#) [999-16716-002](#)  
[999-16716-003](#) [A101J1V3Q004](#) [A101J2ZQ004](#) [A101J51CB0004](#) [A103J1ZQ004](#) [A201J1AQ004](#) [A201J3ZB004](#) [A201J50ZQ004](#)  
[A203J51ZQ0004](#) [A435S1YZQ](#) [H8500XBBBBL-A](#) [H8653VBBG2577W](#) [HB130CHNWWNAAC](#) [R13112ABB-602W](#) [1251.0303](#)  
[AE205J60V3B004](#) [1352.0107](#) [1363.0201](#) [1500G51E](#) [1571099-3](#) [1571987-4](#) [1571987-5](#) [1571988-5](#) [B123J77V7B2](#) [B226J50W4Q22P](#)  
[B433J37ZQ22M](#) [160212E](#) [1634200-7](#) [1801.1164](#) [1831.1102](#) [1839.1502](#) [PANEL-PLUG-VHP-BLACK](#) [PANEL-PLUG-VHP-WT](#)  
[K1ABBSCADN](#) [K2ABAAAAAA](#) [KG312A2DXD246X](#) [250011E714](#) [2600R21E](#) [260413E](#) [2637LH/2A7/122048L0](#) [2639LH/2A7/127000L0](#)  
[LL3AZXX-100-XGT1](#) [LL3AZXX-100-XHS1](#)