



ROCKER SWITCH



SS31 SERIES

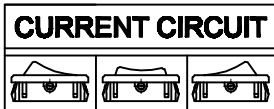


SPECIFICATION

Rating: 16A 125VAC 3/4HP(C-UL)
 16A 250VAC 3/4HP(C-UL)
 16(4)A 250V~T125/55(NEMKO, ENEC17, CB, CQC)
 10(2) 250V~T125/55(5E4)(NEMKO, ENEC17, CB, CQC)
 INITIAL CONTACT RESISTANCE: 20mΩ Max
 OPERATION FORCE: 300±200gf
 INSULATION RESISTANCE: 100mΩ MIN 500VDC
 WITHSTAND VOLTAGE: 1500VAC FOR 1MINUTE
 ENDURANCE: 10,000CYCLES

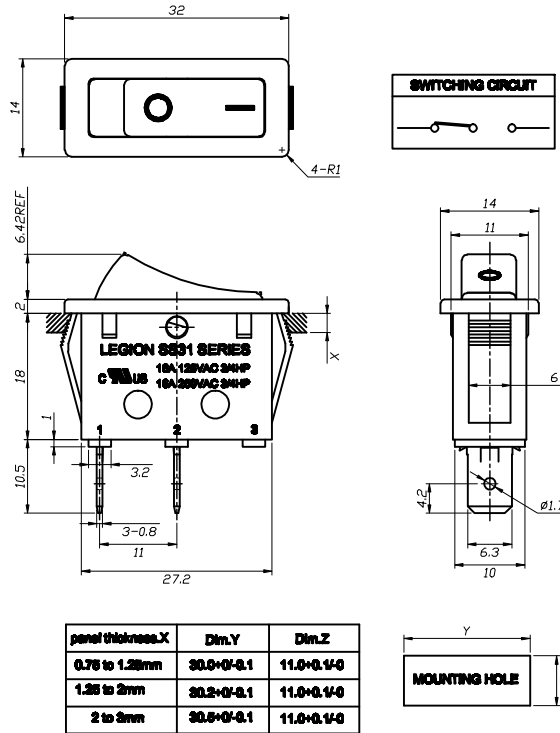


| TERMINAL TYPE | |
|---------------|--|
| Q | QUICK-CONN  |
| A | QUICK-CONN  |

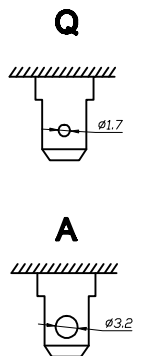


| | | | | | | | | | |
|----|------|-----|-------|------|----|------|-----|-------|------|
| 20 | ON | - | OFF | | 40 | ON | - | OFF | |
| 21 | (ON) | - | OFF | SPST | 41 | (ON) | - | OFF | DPST |
| 22 | ON | - | (OFF) | | 42 | ON | - | (OFF) | |
| 30 | ON | - | ON | | 60 | ON | - | ON | |
| 31 | (ON) | - | ON | | 61 | (ON) | - | ON | |
| 32 | ON | OFF | ON | SPDT | 62 | ON | OFF | ON | DPDT |
| 33 | (ON) | OFF | ON | | 63 | (ON) | OFF | ON | |
| 34 | (ON) | OFF | (ON) | | 64 | (ON) | OFF | (ON) | |

(-) MOMENTARY



Terminal list



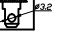


SS31 SERIES ORDERING SYSTEM

SS31 - B B I W Q - R S 2 0 - L 0 1 - R

MODEL NO.

| | | | | | | | |
|-----------------------|----------------------|-----------------------|----------------------|---------------------|------------------|--------------------|-----------------------|
| ACTUATOR COLOR | HOUSING COLOR | PRINTING COLOR | ACTUATOR TYPE | HOUSING TYPE | LAMP TYPE | LIGHT COLOR | RoHS DIRECTIVE |
| B BLACK | W WHITE | W WHITE | R ROCKER | S SINGLE POLE | L WITH LAMP | 0 AMBER(S) | R MEET RoHS DIRECTIVE |
| R RED | | B BLACK | F FLAT | D DOUBLE POLE | NONE | 2 RED | NONE |
| | | N NONE | L WITH LENS | T TWINS POLE | | 3 GREEN | |
| | | | | | | 4 BLUE | |
| | | | | | | NONE | |

| | | | |
|----------------------------------|--|--|-----------------|
| ACTUATOR/HOUSING PRINTING | TERMINAL TYPE | CURRENT CIRCUIT | RESISTOR |
| I O W = | Q QUICK-CONN  |  | NONE |
| N R | A QUICK-CONN  | 20 ON - OFF | 1 100KΩ |
| | | 21 (ON) - OFF SPST | 2 200KΩ |
| | | 22 ON - (OFF) | |
| | | 30 ON - ON | |
| | | 31 (ON) - ON | |
| | | 32 ON OFF ON SPDT | |
| | | 33 (ON) OFF ON | |
| | | 34 (ON) OFF (ON) | |
| | | 40 ON - OFF | |
| | | 41 (ON) - OFF DPST | |
| | | 42 ON - (OFF) | |
| | | 60 ON - ON | |
| | | 61 (ON) - ON | |
| | | 62 ON OFF ON DPDT | |
| | | 63 (ON) OFF ON | |
| | | 64 (ON) OFF (ON) | |

(-) MOMENTARY

X-ON Electronics

Largest Supplier of Electrical and Electronic Components

Click to view similar products for [Rocker Switches](#) category:

Click to view products by [Legion](#) manufacturer:

Other Similar products are found below :

[LTILA6E-1S-WH-RC-FN12VXCR1](#) [6-1571986-9](#) [8055K23Z7V](#) [8055K52Z7V](#) [8138K20E6M50](#) [PREDD5-07F-BB0GW](#) [999-16716-002](#)
[999-16716-003](#) [A101J1V3Q004](#) [A101J2ZQ004](#) [A101J51CB0004](#) [A103J1ZQ004](#) [A201J1AQ004](#) [A201J50ZQ004](#) [A203J51ZQ0004](#)
[A435S1YZQ](#) [H8653VBBG2577W](#) [HB130CHNWWNAAC](#) [R13112ABB-602W](#) [1251.0303](#) [1352.0107](#) [1363.0201](#) [1500G51E](#) [1571099-3](#)
[1571987-4](#) [1571987-5](#) [1571988-5](#) [B123J77V7B2](#) [B226J50W4Q22P](#) [B433J37ZQ22M](#) [160212E](#) [1634200-7](#) [1801.1164](#) [1831.1102](#) [1839.1502](#)
[PANEL-PLUG-VHP-BLACK](#) [PANEL-PLUG-VHP-WT](#) [K1ABBSCADN](#) [K2ABAAAAAAA](#) [KG312A2DXD246X](#) [250011E714](#) [2600R21E](#)
[260413E](#) [2637LH/2A7/122048L0](#) [2639LH/2A7/127000L0](#) [LL3AZXX-100-XGT1](#) [LL3AZXX-100-XHS1](#) [LL3AZXX-100-XSD1](#) [30-695B](#)
[160311E](#)