



DO-218AB



FEATURES

- Junction passivation optimized design passivated anisotropic rectifier technology
- $T_J = 175^\circ\text{C}$ capability suitable for high reliability and automotive requirement.
- Available in bi-directional polarity
- Low leakage current
- Low forward voltage drop
- High surge capability
- Meets ISO16750-2 surge specification(varied by test condition)
- Meets MSL-1, per J-STD-020, LF maximum peak of 245°C .
- AEC-Q101 qualified.
- Compliant to RoHS directive 2002/95/EC and in accordance to WEEE 2002/96/EC

TYPICAL APPLICATIONS

Use in sensitive electronics protection against voltage transients induced by inductive load switching and lighting, especially for automotive load dump protection application.

PRIMARY CHARACTERISTICS	
V_R	12V to 36V
P_{PPM} (10/1000 μs)	6600W
P_{PPM} (10/10000 μs)	5200W
P_D	8W
T_{Jmax}	175°C
Polarity	Bi-directional
Package	DO-218AB

MECHANICAL DATA

Case: DO-218AB

Molding compound meets UL 94V-0 flammability rating

Base P/NHE3-RoHS-compliant, AEC-Q101 qualified

Terminals: Matte tin plated leads, solderable per J-STD-002 and JESD22-B102

MAXIMUM RATINGS($T_C=25^\circ\text{C}$, RH=45%-75%, unless otherwise noted)			
Parameter	Symbol	Value	Unit
Peak pulse power dissipation on 10/1000 μs waveform	P_{PPM}	6600	Watts
Peak pulse power dissipation on 10/10000 μs waveform		5200	Watts
Power dissipation on infinite heat sink at $T_C=25^\circ\text{C}$	P_D	8.0	Watts
Peak pulse current with 10/1000 μs waveform	$I_{PPM}^{(1)}$	See next table	Amps
Operating junction and storage temperature range	T_J, T_{STG}	-55 to +175	$^\circ\text{C}$
Typical thermal resistance, junction to case	$R_{\theta JC}$	0.9	$^\circ\text{C/W}$

Note

(1) Non-repetitive current pulse derated above $T_A=25^\circ\text{C}$

ELECTRICAL CHARACTERISTICS								
Part Number	V_R	I_T	$I_R@V_R$		$V_{BR} @I_T$		$V_C @I_{PP}$	I_{PP}
Bi-polar	V	mA	$\mu A@25^\circ C$	$\mu A@175^\circ C$	min(V)	max (V)	V	A
SM8S12CA	12.0	5	5	150	13.3	14.7	19.9	332
SM8S13CA	13.0	5	5	150	14.4	15.9	21.5	307
SM8S14CA	14.0	5	5	150	15.6	17.2	23.2	284
SM8S15CA	15.0	5	5	150	16.7	18.5	24.4	270
SM8S16CA	16.0	5	5	150	17.8	19.7	26.0	253
SM8S17CA	17.0	5	5	150	18.9	20.9	27.6	239
SM8S18CA	18.0	5	5	150	20.0	22.1	29.2	226
SM8S20CA	20.0	5	5	150	22.2	24.5	32.4	204
SM8S22CA	22.0	5	5	150	24.4	26.9	35.5	186
SM8S24CA	24.0	5	5	150	26.7	29.5	38.9	170
SM8S26CA	26.0	5	5	150	28.9	31.9	42.1	157
SM8S28CA	28.0	5	5	150	31.1	34.4	45.4	145
SM8S30CA	30.0	5	5	150	33.3	36.8	48.4	136
SM8S33CA	33.0	5	5	150	36.7	40.6	53.3	124
SM8S36CA	36.0	5	5	150	40.0	44.2	58.1	114

Note:

①.Surge waveform: 10/1000 μ s

V_R : Stand-off voltage -- Maximum voltage that can be applied

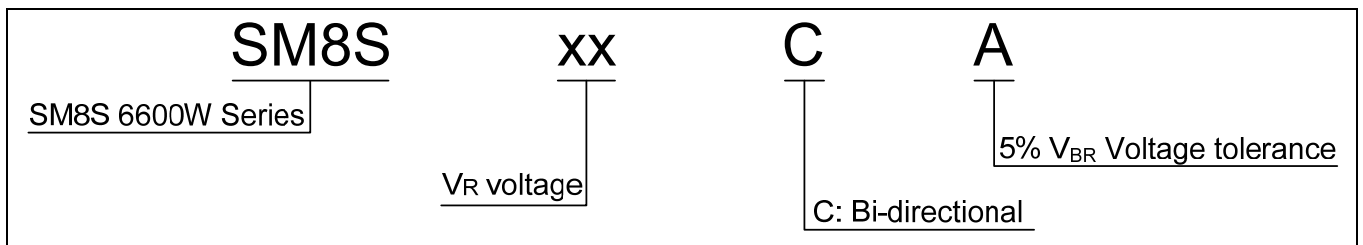
V_{BR} : Breakdown voltage

V_C : Clamping voltage -- Peak voltage measured across the suppressor at a specified I_{PP}

I_R : Reverse leakage current

I_T : Test current

ORDERING INFORMATION



RATINGS AND CHARACTERISTICS CURVES ($T_A=25^\circ\text{C}$, unless otherwise noted)

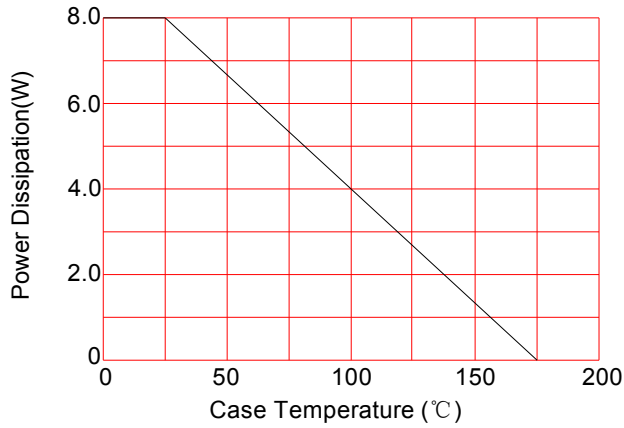


FIG.1: Power Derating Curve

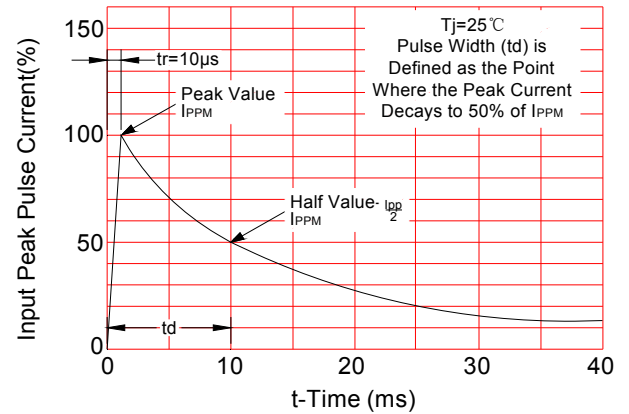


FIG.2: Pulse Waveform

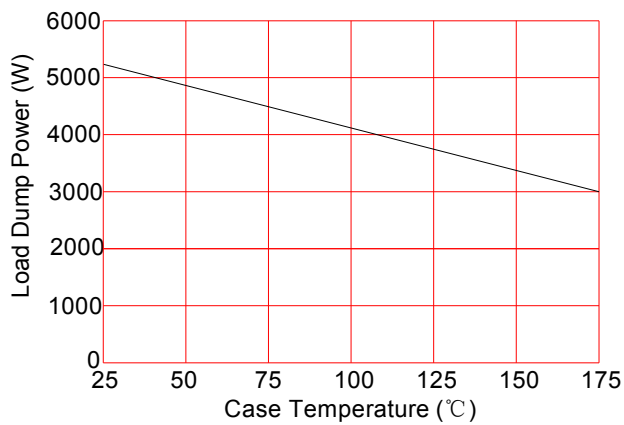


FIG.3: Load Dump Power Characteristics (10ms Exponential Wavaforn)

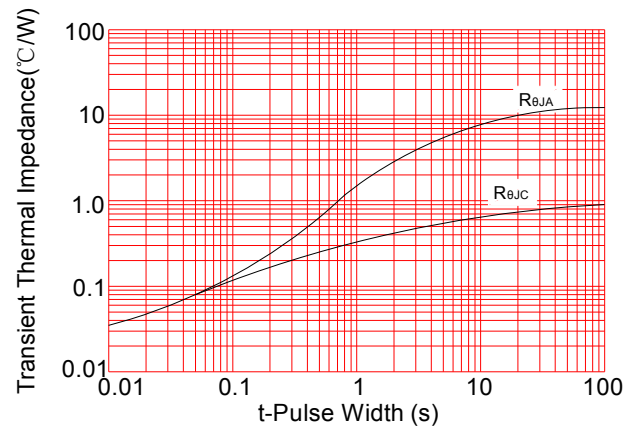
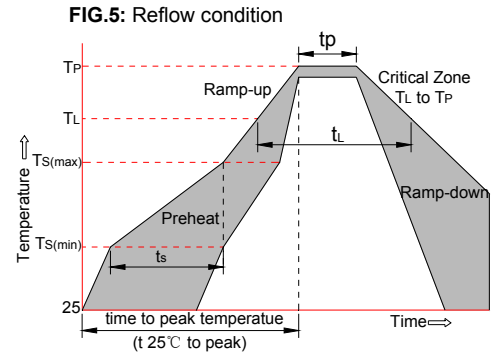


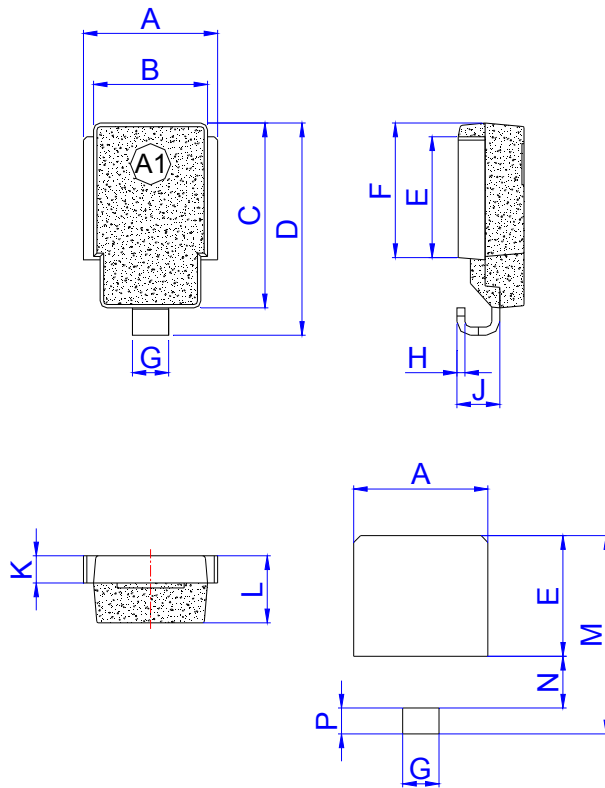
FIG.4: Typical Transient Thermal Impedance

SOLDERING PARAMETERS

Reflow Condition		Pb-Free assembly (see FIG.5)
Pre Heat	-Temperature Min ($T_{s(min)}$)	+150°C
	-Temperature Max($T_{s(max)}$)	+200°C
	-Time (Min to Max) (t_s)	60-180 secs.
Average ramp up rate (Liquidus Temp (T_L) to peak)		3°C/sec. Max
$T_{s(max)}$ to T_L - Ramp-up Rate		3°C/sec. Max
Reflow	-Temperature(T_L)(Liquidus)	+217°C
	-Temperature(t_L)	60-150 secs.
Peak Temp (T_p)		+260(+0/-5)°C
Time within 5°C of actual Peak Temp (t_p)		20-40secs.
Ramp-down Rate		6°C/sec. Max
Time 25°C to Peak Temp (T_p)		8 min. Max
Do not exceed		+260°C

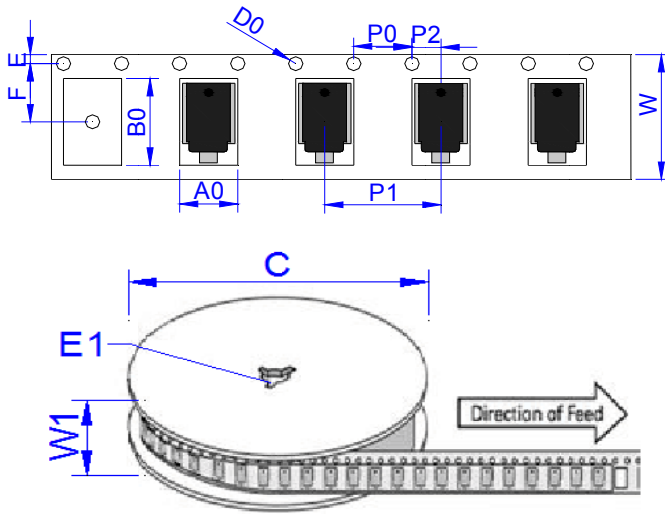


PACKAGE MECHANICAL DATA



Ref.	Dimensions			
	Millimeters		Inches	
	Min.	Max.	Min.	Max.
A	9.5	10.5	0.374	0.413
B	8.3	8.7	0.327	0.342
C	13.3	13.7	0.524	0.539
D	15.0	16.0	0.592	0.628
E	8.5	9.1	0.335	0.358
F	9.5	10.1	0.374	0.398
G	2.4	3.0	0.094	0.118
H	0.5	0.7	0.020	0.028
J	2.7	3.7	0.106	0.146
K	1.9	2.1	0.075	0.083
L	4.7	5.1	0.185	0.201
M	14.2	14.8	0.559	0.583
N	3.5	4.1	0.138	0.161
P	1.6	2.2	0.063	0.087

TAPE AND REEL SPECIFICATION-DO-218AB



Ref.	Dimensions	
	Millimeters	Inches
A0	10.80 ± 0.3	0.425 ± 0.012
B0	16.13 ± 0.3	0.635 ± 0.012
C	330.0 ± 0.3	13.0 ± 0.012
D0	1.55 ± 0.2	0.061 ± 0.008
D1	1.55 ± 0.2	0.061 ± 0.008
E	1.75 ± 0.2	0.069 ± 0.008
E1	13.30 ± 0.2	0.524 ± 0.008
F	11.50 ± 0.2	0.453 ± 0.008
P0	4.00 ± 0.2	0.157 ± 0.008
P1	16.00 ± 0.2	0.630 ± 0.008
P2	2.00 ± 0.2	0.079 ± 0.008
W	24.00 ± 0.2	0.945 ± 0.008
W1	25.85 ± 0.2	1.018 ± 0.008

X-ON Electronics

Largest Supplier of Electrical and Electronic Components

Click to view similar products for [ESD Suppressors / TVS Diodes](#) category:

Click to view products by [Leiditech](#) manufacturer:

Other Similar products are found below :

[NTE4902](#) [P4SMAJ15A](#) [P4SMAJ26A](#) [SMAJ400CA-TP](#) [TGL34-47CA](#) [ESDAULC45-1BF4](#) [SM1605E3/TR13](#) [SMF20A-TP](#) [P4SMAJ12A](#)
[CPDUR24V-HF](#) [CPDQC5V0USP-HF](#) [CPDQC5V0-HF](#) [MPLAD30KP280A](#) [MPLAD30KP45CAE3](#) [MMBZ27VCLQ-7-F](#) [MMAD1108/TR13](#)
[MPLAD30KP24A](#) [MPLAD30KP30CAE3](#) [ACPDQC5V0R-HF](#) [DFLT170A-7](#) [NTE4900](#) [NTE4926](#) [NTE4938](#) [JANTX1N6144A](#)
[JANTX1N6057A](#) [SMF22A-TP](#) [SMF12A-TP](#) [SLVU2.8-TP](#) [SMLJ6.5CA-TP](#) [SMAJ6.5CA-TP](#) [MMAD1108E3/TR13](#) [JANTX1N6160A](#)
[D5V0M1U2LP3-7](#) [SMAJ400A-TP](#) [AOZ8811DT-03](#) [AOZ8831DI-05](#) [AOZ8831DT-03](#) [SMAJ188CA](#) [3SMC33CA BK](#) [CPDQC3V3C-HF](#)
[CPDQC12VE-HF](#) [GRPADATAJANTX1N6041A](#) [MPLAD30KP170CA](#) [82357120100](#) [5.0SMLJ15CA-TP](#) [5KP18A-TP](#) [P6KE8.2A-TP](#)
[MPLAD30KP43CAE3](#) [SMAJ43A-TP](#) [D26V0H1U2LP16-7](#)