

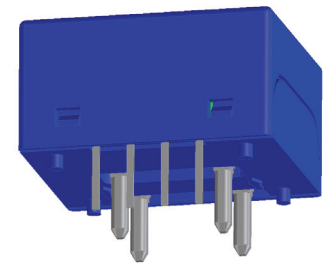
Current Transducer HXS 10-NP/SP3

For the electronic measurement of currents: DC, AC, pulsed..., with galvanic isolation between the primary circuit (high power) and the secondary circuit (electronic circuit).



All Data are given with a $R_L = 10\text{ k}\Omega$

$I_{PN} = 10, 20\text{ A}$
DUAL PHASE



Electrical data

		Serial	Parallel	
I_{PN}	Primary nominal current rms	± 10	± 20	A
I_{PM}	Primary current, measuring range	± 30	± 60	A
V_{OUT}	Analog Output voltage @ I_p	$V_{OE} \pm (0.625 \cdot I_p / I_{PN})\text{ V}$		
G_{TH}	Theoretical sensitivity	0.625 V / I_{PN}		
V_{REF}	Reference voltage ¹⁾	2.5 \pm 0.025 V		
	Output voltage	typ. 200 Ω		
	Output impedance	$\geq 200\text{ k}\Omega$		
	Load impedance	$\geq 2\text{ k}\Omega$		
R_L	Load resistance	$< 5\text{ }\Omega$		
R_{OUT}	Output internal resistance	= 4.7 nF		
C_L	Capacitive loading ($\pm 20\%$)	5 V		
V_C	Supply voltage ($\pm 5\%$) ²⁾	19 mA		
I_C	Current consumption @ $V_C = 5\text{ V}$			

Accuracy - Dynamic performance data

X	Accuracy ³⁾ @ I_{PN} , $T_A = 25^\circ\text{C}$	$\leq \pm 1$	%
ϵ_L	Linearity error	$0 \dots I_{PN}$	$\leq \pm 0.5$ %
		$0 \dots 3 \times I_{PN}$	$\leq \pm 1$ %
TCV_{OE}	Temperature coefficient of V_{OE}	(+25.. 85°C)	$\leq \pm 0.4$ mV/K
		(-40.. +25°C)	$\leq \pm 0.525$ mV/K
TCV_{REF}	Temperature coefficient of V_{REF}	(+25.. 85°C)	$\leq \pm 0.01$ %/K
		(-40.. +25°C)	$\leq \pm 0.015$ %/K
$TCV_{OE/V_{REF}}$	Temperature coefficient of V_{OE} / V_{REF}		$\leq \pm 0.15$ mV/K
TCG	Temperature coefficient of G		$\leq \pm 0.05$ % of reading/K
V_{OE}	Electrical offset voltage @ $I_p = 0$, $T_A = 25^\circ\text{C}$	$V_{REF} \pm 0.0125$ V	
V_{OM}	Magnetic offset voltage @ $I_p = 0$		
	after an overload of $3 \times I_{PN}$	± 0.7	%
t_{ra}	Reaction time to 10 % of I_{PN} step	< 3	μs
t_r	Response time to 90 % of I_{PN} step	< 5	μs
di/dt	di/dt accurately followed	> 50	A/ μs
V_{no}	Output voltage noise (DC .. 10 kHz)	< 20	mVpp
	(DC .. 1 MHz)	< 40	mVpp
BW	Frequency bandwidth (-3 dB) ⁴⁾	DC .. 50	kHz

General data

T_A	Ambient operating temperature	- 40 .. + 85	$^\circ\text{C}$
T_S	Ambient storage temperature	- 40 .. + 85	$^\circ\text{C}$
m	Mass	10	g
	Standards	EN 50178: 1997	

Notes: ¹⁾ It is possible to overdrive V_{REF} with an external reference voltage between 1.5 - 2.8 V providing its ability to sink or source approximately 5 mA.

²⁾ Maximum supply voltage (not operating) $< 6.5\text{ V}$

³⁾ Excluding Offset and Magnetic offset voltage.

⁴⁾ Small signal only to avoid excessive heatings of the magnetic core

Features

- Hall effect measuring principle
- Multirange current transducer through PCB pattern lay-out
- Galvanic isolation between primary and secondary circuit
- Isolation test voltage 3500 V between Primary and Secondary
- Low power consumption
- Extremely low profile $< 11\text{ mm}$
- Single power supply + 5 V
- Fixed offset & sensitivity
- Isolated plastic case recognized according to UL 94-V0.

Special feature

- Two separate primary windings for dual phase measurement.

Advantages

- Small size and space saving
- Only one design for wide current ratings range
- High immunity to external interference
- Internal & external reference.

Applications

- AC variable speed drives and servo motor drives
- Static converters for DC motor drives
- Battery supplied applications
- Uninterruptible Power Supplies (UPS)
- Switched Mode Power Supplies (SMPS)
- Power supplies for welding applications.

Application domain

- Industrial.

Current Transducer HXS 10-NP/SP3

Isolation characteristics

V_d	Rms voltage for AC isolation test, 50 Hz, 1 min	Primary to secondary	3.5	kV
		Primary 1 to primary 2	2.5	kV
dCp	Creepage distance		> 5.5	mm
dCl	Clearance distance		> 5.5	mm
CTI	Comparative Tracking Index (group I)		> 600	V

Applications examples

According to **EN 50178, IEC 61010-1 standards** and following conditions:

- Over voltage category OV 3
- Pollution degree PD2
- Non-uniform field

	EN 50178	IEC 61010-1
Single isolation	600 V	600 V
Reinforced isolation	300 V	150 V

According to **UL508 standard** and following conditions: Max. Voltage 600V

- Over voltage category OV 3
- Pollution degree PD2

Safety



This transducer must be used in electric/electronic equipment with respect to applicable standards and safety requirements in accordance with the manufacturer's operating instructions.



Caution, risk of electrical shock

When operating the transducer, certain parts of the module can carry hazardous voltage (eg. primary busbar, power supply).

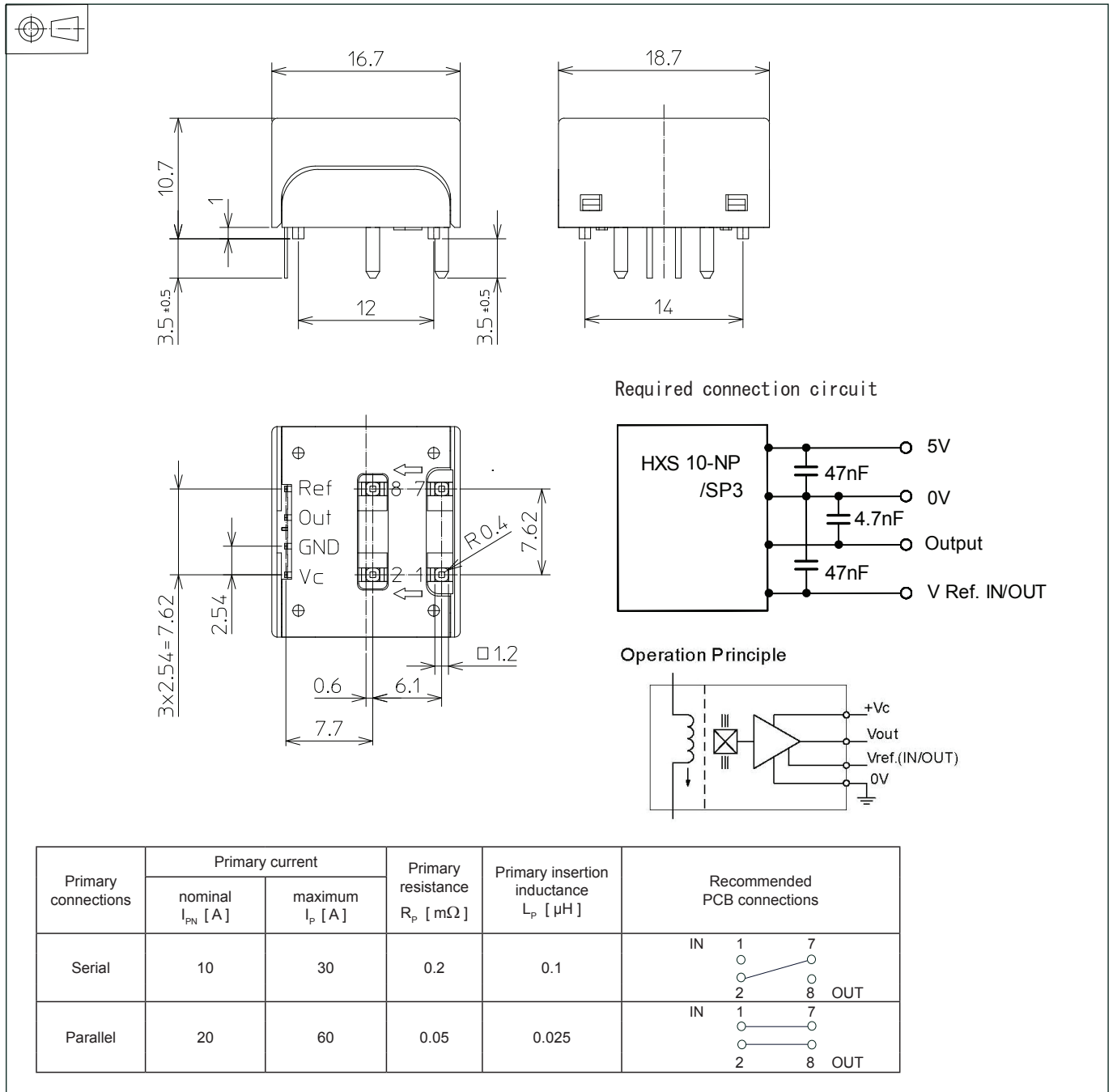
Ignoring this warning can lead to injury and/or cause serious damage.

This transducer is a build-in device, whose conducting parts must be inaccessible after installation.

A protective housing or additional shield could be used.

Main supply must be able to be disconnected.

Dimensions HXS 10-NP/SP3 (in mm)



Mechanical characteristics

- General tolerance ± 0.2 mm
- Transducer fastening & connection of primary jumper 4 pins $\square 1.2$ mm (corner R 0.4mm)
- Transducer fastening & connection of secondary 4 pins 0.5 x 0.25 mm

Recommended PCB hole

- Primary PCB hole $\varnothing 1.5$ mm
- Secondary PCB hole $\varnothing 0.7$ mm

Remarks

- V_{OUT} is positive when I_p flows from terminals 1, 7 (IN) to terminals 2, 8 (OUT).
- Temperature of the primary conductor should not exceed 100°C.

X-ON Electronics

Largest Supplier of Electrical and Electronic Components

Click to view similar products for [Interface - Specialized category](#):

Click to view products by [Lem manufacturer](#):

Other Similar products are found below :

[CY7C910-51LMB](#) [MC33689DPEWR2](#) [MC33975TEKR2](#) [MEC1632-AUE](#) [MC33978AEK](#) [NVT4555UKZ](#) [TJA1081TS,112](#) [RKSAS4](#)
[HMC677G32](#) [LPC47N207-JV](#) [FTP-637DSL633R](#) [MAX7348AEP+](#) [SM712GX04LF04-BA](#) [DS2413P+T&R](#) [NCN5193MNTWG](#)
[MC34978AEK](#) [MC33689DPEW](#) [MC33889BPEG](#) [NCV7381DP0R2G](#) [PCA9704PWJ](#) [S6BT112A01SSBB202](#) [MAX7347AEE+](#) [DS8113-](#)
[RNG+T&R](#) [DS8024-RJX+T&R](#) [NCN5192MNRG](#) [DS8023-RRX+T&R](#) [DS8024-RRX+T&R](#) [ST8034HCQR](#) [XP71055](#)
[TC7PCI3212MT,LF\(S](#) [ASI4UE-F-G1-ST](#) [HOA6241-001](#) [MEC1310-NU](#) [SC74HC4066ADTR2G](#) [TDA8035HNC1S1QL](#) [TNY380PN](#)
[RMT3PB080](#) [AS3935-BQFT](#) [0714300268](#) [MAX9924UAUB/V+](#) [MAX3120CUA+](#) [MAX3171CAI](#) [NCN8025MTTBG](#) [DS8023-RRX](#)
[DS2406P+T&R](#) [DS8007-ENG+](#) [DS8007A-EAG+](#) [DS2482X-101T](#) [DS1886T+](#) [DG407AK/883B](#)