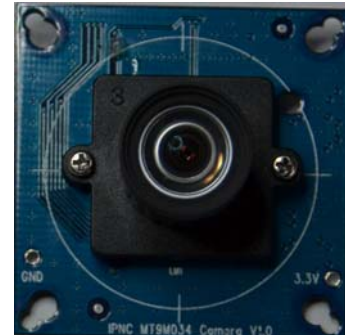




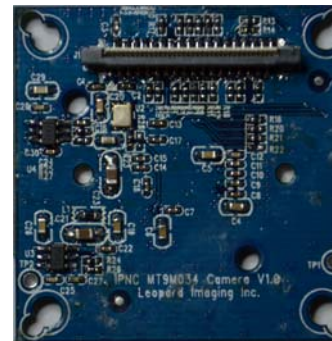
IPCamera MT9M034 Camera Module

LI-CAM-M034 High Definition Camera Module

Leopard Imaging provides the Time-to-Market camera development kit with seamless interface to TI IPCamera with a standard 36-pin ZIP connector interface as well as Leopardboard 365 or Leopardboard 368 through an adapter board LI-VCAMADAPTER. LI-CAM-M034 is a high-resolution digital camera module. It incorporates an Aptina 1/3-inch 1.2M CMOS digital image sensor MT9M034, with an active imaging pixel array of 1280H x 960V. The LI-CAM-M034 Camera Module produces extraordinarily clear, sharp digital pictures, and it is capable of capturing both continuous video and single frame, which makes it the perfect choice for surveillance industry, machine vision industry.



LI-CAM-M034
Camera Board



Camera Back

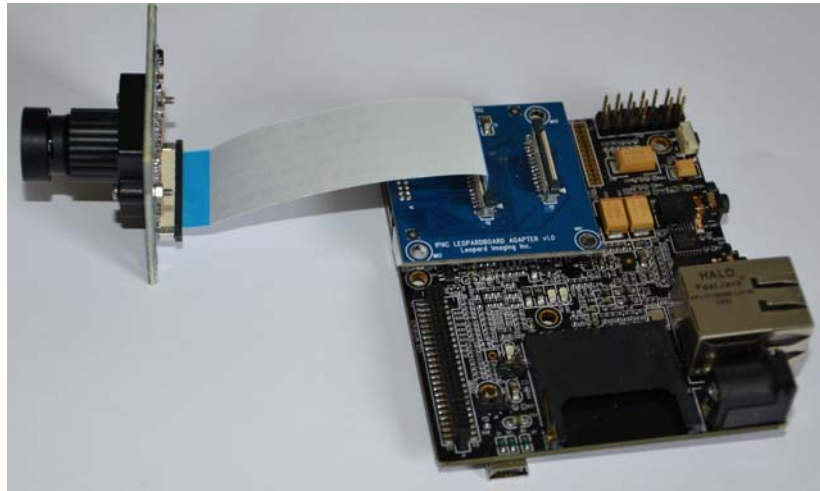
Leopard Imaging provides patches on IPNC-MT5 Ver2.6 to have MT9M034 camera Module function as standard IPCamera with 720p@30fps H.264 Streaming. Hardware platform includes Leopardboard 36x, LI-VCAMADAPTER and LI-CAM-M034 Camera.

Leopard Imaging Inc

1130 Cadillac CT, Milpitas, CA 95035 USA
Phone: (408) 263-0988
Fax: (408) 217-1960
Website: www.leopardimaging.com



IPCamera MT9M034 Camera Module



LI-CAM-M034 WITH Leopardboard 36x

Features:

- 1/3-Inch 1.2-Megapixel CMOS High Definition Digital Imager
- Active imaging pixels: 1280H x 960V
- Pixel Size: 3.75 μ m x 3.75 μ m
- 12-bit Digital Output with Line and Frame Synchronization
- Support for 720p @ 30fps on Leopardboard36x
- Simple two-wire serial interface
- Superior low-light performance
- Low noise CMOS imaging technology that achieves CCD image quality
- Direct interface to TI IPCamera
- Interface to Leopardboard 36x with LI-VCAMADAPTER board
- High resolution standard M12 lens
- **Free Patches on IPNC-MT5 Ver2.6 to have standard IPCamera function to stream high definition 720p@30fps H.264 video**

Leopard Imaging Inc

1130 Cadillac CT, Milpitas, CA 95035 USA
Phone: (408) 263-0988
Fax: (408) 217-1960
Website: www.leopardimaging.com



IPCamera MT9M034 Camera Module

Application:

- Digital Video Camera Development
- High Resolution Surveillance IP Network Cameras
- High Resolution Video Conference Camera

Part number:

High Definition Camera Module Part Number: **LI-CAM-M034**

Contact:

Leopard Imaging Inc.

1130 Cadillac CT

Milpitas, CA 95035

Phone: (408) 263-0988

Fax: (408) 217-1960

Email: sales@leopardimaging.com

Technical Support: support@leopardimaging.com

Web site: www.leopardimaging.com

Notes:

This camera module has standard M12 lens with IR Cutting Filter, but sensor itself doesn't have filter. For standard TI IPCamera, it needs to glue an IR Cutting Filter on sensor or put a motorized filter.

Leopard Imaging Inc

1130 Cadillac CT, Milpitas, CA 95035 USA

Phone: (408) 263-0988

Fax: (408) 217-1960

Website: www.leopardimaging.com

X-ON Electronics

Largest Supplier of Electrical and Electronic Components

Click to view similar products for [Cameras & Camera Modules](#) category:

Click to view products by [Leopard Imaging](#) manufacturer:

Other Similar products are found below :

[FH-SC](#) [CAMOV5645](#) [73-540-420I](#) [Web Camera module 5.0M pixel](#) [LI-IMX424-GMSL2-070H](#) [73-951-0046](#) [73-954-0001T](#) [73-961-0005](#)
[1202](#) [1203](#) [73-961-0003](#) [73-961-0012](#) [107139](#) [106983](#) [107115](#) [107149](#) [107142](#) [82535IVCHVM](#) [107140](#) [107113](#) [107112](#) [107141](#) [107147](#)
[107148](#) [107110](#) [107150](#) [107145](#) [107111](#) [OKY3553](#) [10299](#) [10300](#) [11388](#) [613](#) [EP-DCINTELD-415](#) [1386](#) [4321](#) [4561](#) [43203](#) [104002](#)
[105716](#) [105993](#) [107206](#) [107645](#) [107646](#) [107655](#) [108010](#) [108172](#) [108173](#) [CLEO-CAM1](#) [107114](#)