

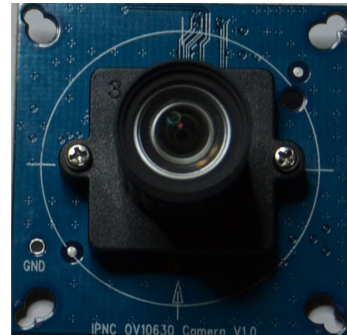


IPCamera OV10633 Camera Module

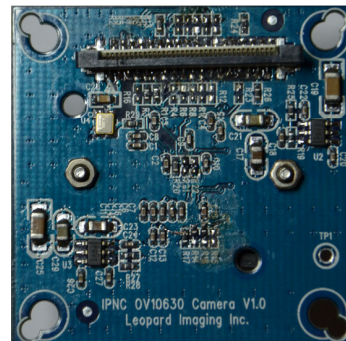
LI-CAM-OV10633 High Definition Camera Module

Leopard Imaging provides the Time-to-Market camera development kit with seamless interface to TI IPCamera with a standard 36-pin ZIP connector interface as well as Leopardboard 365 or Leopardboard 368 through an adapter board LI-VCAMADAPTER. LI-CAM-OV10633 is a high-resolution digital camera Module. It incorporates an OmniVision 1/2.7-inch WDR CMOS digital image sensor OV10633, with an active imaging pixel array of 1280H x 800V. The LI-CAM-OV10633 Camera Module produces extraordinarily clear, sharp digital pictures, and it is capable of capturing both continuous video and single frame, which makes it the perfect choice for surveillance industry, machine vision industry.

Leopard Imaging provides patches on IPNC-MT5 Ver2.6 to have OV10633 camera module function as standard IPCamera with 720p@30fps H.264 streaming. Hardware platform includes



LI-CAM-OV10633
Camera Module



Camera Back

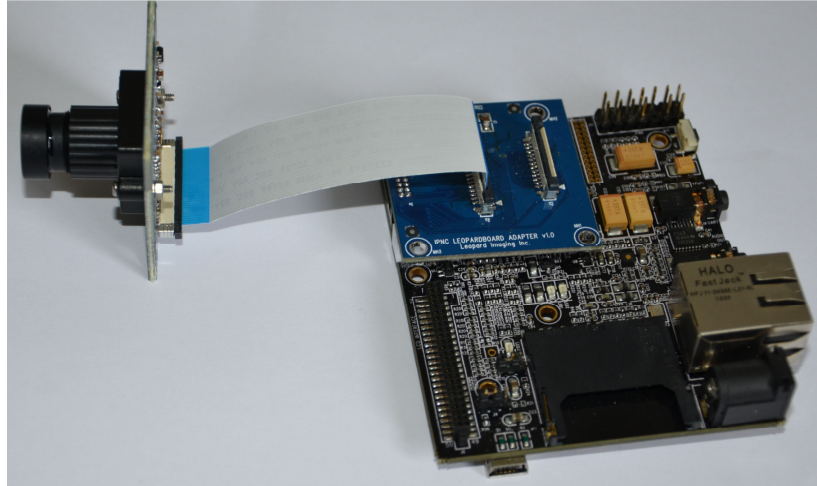
Leopard Imaging Inc

1130 Cadillac CT, Milpitas, CA 95035 USA
Phone: (408) 263-0988
Fax: (408) 217-1960
Website: www.leopardimaging.com



IPCamera OV10633 Camera Module

Leopardboard 36x, LI-IPNCADAPTER and
LI-CAM-OV10633 Camera Module.



LI-CAM-OV10633 WITH Leopardboard 36x

Features:

- 1/2.7-Inch WDR CMOS High Definition Digital Imager
- Active imaging pixels: 1280H x 800V
- Pixel Size: 4.2 μ m x 4.2 μ m
- 10-bit raw, 8-/10-bit YUV422
- Support for 720p @ 30fps on Leopardboard36x
- Simple two-wire serial interface
- Superior low-light performance
- Low noise CMOS imaging technology that achieves CCD image quality
- Direct interface to TI IPCamera
- Interface to Leopardboard 36x with LI-VCAMADAPTER board
- High resolution standard M12 lens

Leopard Imaging Inc

1130 Cadillac CT, Milpitas, CA 95035 USA
Phone: (408) 263-0988
Fax: (408) 217-1960
Website: www.leopardimaging.com



IPCamera OV10633 Camera Module

- **Free Patches on IPNC-MT5 Ver2.6 to have standard IPCamera function to stream high definition 720p@30fps H.264 video**

Application:

- Digital Video Camera Development
- High Resolution Surveillance IP Network Cameras
- High Resolution Video Conference Camera
- Automobile industry

Part number:

High Definition Camera Board Part Number:

LI-CAM-OV10633

Contact:

Leopard Imaging Inc.

1130 Cadillac CT

Milpitas, CA 95035

Phone: (408) 263-0988

Fax: (408) 217-1960

Email: sales@leopardimaging.com

Technical Support: support@leopardimaging.com

Web site: www.leopardimaging.com

Notes:

This camera module has standard M12 lens with IR Cutting Filter, but sensor itself doesn't have filter. For standard TI IPCamera, it needs to glue an IR Cutting Filter on sensor or put a motorized filter.

Leopard Imaging Inc

1130 Cadillac CT, Milpitas, CA 95035 USA

Phone: (408) 263-0988

Fax: (408) 217-1960

Website: www.leopardimaging.com

X-ON Electronics

Largest Supplier of Electrical and Electronic Components

Click to view similar products for [Cameras & Camera Modules](#) category:

Click to view products by [Leopard Imaging](#) manufacturer:

Other Similar products are found below :

[FH-SC](#) [CAMOV5645](#) [73-540-420I](#) [Web Camera module 5.0M pixel](#) [LI-IMX424-GMSL2-070H](#) [73-951-0046](#) [73-954-0001T](#) [73-961-0005](#)
[1202](#) [1203](#) [73-961-0003](#) [73-961-0012](#) [107139](#) [106983](#) [107115](#) [107149](#) [107142](#) [82535IVCHVM](#) [107140](#) [107113](#) [107112](#) [107141](#) [107147](#)
[107148](#) [107110](#) [107150](#) [107145](#) [107111](#) [OKY3553](#) [10299](#) [10300](#) [11388](#) [613](#) [EP-DCINTELD-415](#) [1386](#) [4321](#) [4561](#) [43203](#) [104002](#)
[105716](#) [105993](#) [107206](#) [107645](#) [107646](#) [107655](#) [108010](#) [108172](#) [108173](#) [CLEO-CAM1](#) [107114](#)