

LI-OG02B10-MIPI-125H SPECIFICATION

**Rev 1.1
Leopard Imaging Inc.**

Contents

Version History	3
Key Information	4
Pin Assignment	5
Mechanical Diagram	6



LI-OG02B10-MIPI-125H SPECIFICATION

Version History

Version	Description	Release Date
1.0	First Release.	20. Nov. 2019
1.1	Deleted info quoted from sensor spec.	19. May. 2022



LI-OG02B10-MIPI-125H SPECIFICATION

Key Information

Module Part#		LI-OG02B10-MIPI-125H
Module Size		39.8 (L) x 13.6 (W) x 17.9 (H) mm
Sensor Type		OG02B10 Color sensor
Array Size		1600 (H) x 1300 (V)
Power Supply	Core	1.2V (nominal)
	Analog	2.8V (nominal)
	I/O	1.8V (nominal)
Lens		1/2.9"
F/No		2.5
Focal Length		2.2 mm
View Angle		125° (H)
TV Distortion		< -20%
Object Distance		TBD
Sensitivity		114Ke ⁻ / (μ W.cm ⁻² .sec) @ 850 nm 54Ke ⁻ / (μ W.cm ⁻² .sec) @ 940 nm
Pixel Size		3 x 3 μm
IR Filter		650 nm IR cut filter
Temperature Range	Operating	-30°C to +85°C
Output Formats		10-bit RAW
Maximum Image Transfer Rate		1600 x 1300 @ 60 fps
Dynamic Range		68 dB
Lens Chief Ray Angle		15° linear
Input Clock Frequency		6 ~ 27 MHz
Power Requirement	Active	190 mW
	XSHUTDOWN	< 25 uW
Max S/N Ratio		37.4 dB
Shutter		Global shutter
Dark Current		TBD
Image Area		4857.696 x 3955.896 μm
Package Dimensions		7219 x 6157 μm



LI-OG02B10-MIPI-125H SPECIFICATION

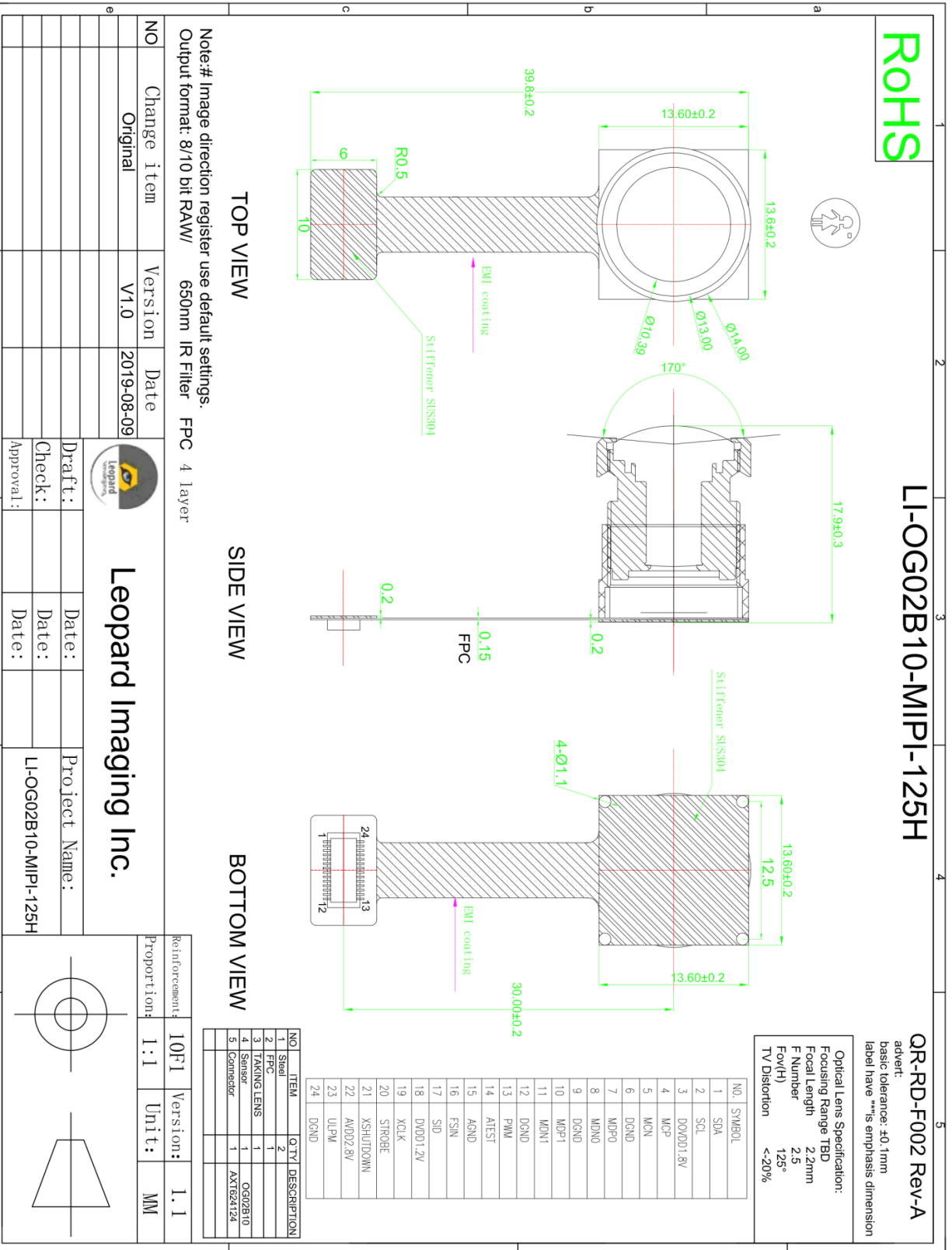
Pin Assignment

No.	Name	Pin type	Description
1	SDA	I/O	SCCB data
2	SCL	Input	SCCB input clock
3	DOVDD1.8V	Power	Power for I/O circuit
4	MCP	Output	MIPI clock positive output
5	MCN	Output	MIPI clock negative output
6	DGND	Ground	
7	MDP0	Output	MIPI data positive output
8	MDN0	Output	MIPI data negative output
9	DGND	Ground	
10	MDP1	Output	MIPI data positive output
11	MDN1	Output	MIPI data negative output
12	DGND	Ground	
13	PWM	I/O	PWM output
14	AATEST	reference	Analog test
15	AGND	Ground	
16	FSIN	I/O	Frame sync input
17	SID	Input	Chip ID selection
18	DVDD1.2V	Power	Power for digital circuit
19	XCLK	Input	System input clock
20	STROBE	I/O	Strobe output
21	XSHUTDOWN	Input	Reset and power down (active low)
22	AVDD2.8	Power	Analog power
23	ULPM	Output	ULPM open-drain output
24	DGND	Ground	



LI-OG02B10-MIPI-125H SPECIFICATION

Mechanical Diagram



X-ON Electronics

Largest Supplier of Electrical and Electronic Components

Click to view similar products for [Cameras & Camera Modules](#) category:

Click to view products by [Leopard Imaging](#) manufacturer:

Other Similar products are found below :

[73-540-420I](#) [82635DSASRPRQ 951913](#) [Web Camera module 5.0M pixel FIT0729](#) [LI-USB30-OX05B1S-VCSEL-OMS-96717-200H](#) [LI-AR1335C-MIPI-097H](#) [108674](#) [LI-USB30-IMX490-GMSL2-120H](#) [LI-USB30-OV2312-GMSL2-110H](#) [LI-IMX675-MIPI-076H](#) [82635DSD456](#) [LI-IMX424-GW5400-FPDLINKIII-120H](#) [LI-AR0234CS-GMSL2-OWL](#) [5390](#) [5389](#) [106681](#) [106752](#) [107654](#) [107402](#) [1202](#) [1203](#) [AC164150](#) [2392](#) [106695](#) [106988](#) [107139](#) [107146](#) [MIPI 5MP IR AF Camera](#) [106732](#) [LI-USB30-AR023ZWDR](#) [LI-USB30-OV13850](#) [LI-OV580-STEREO](#) [LI-OV2640-USB-M6](#) [LI-OV5640-MIPI-AF-NIR](#) [82635DSASMDLPRQ](#) [106692](#) [106687](#) [106493](#) [106688](#) [106682](#) [107115](#) [106694](#) [106989](#) [107149](#) [106693](#) [106696](#) [106684](#) [106683](#) [107140](#) [106982](#)