



LEOPARD IMAGING INC

LI-OV3640-USB-AF

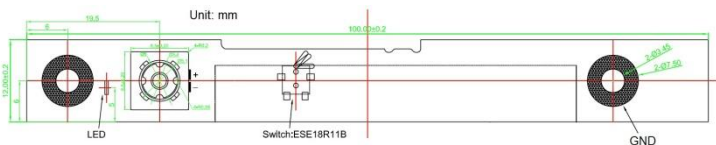
Data Sheet

Key Features

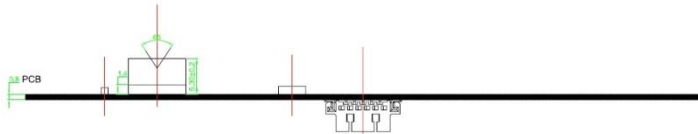
- Support 3M video streaming
- MJPEG compression
- Auto-focusing function
- USB 2.0 compliance
- Size: 100mm x 12mm
- Low cost with high quality
- Customized based on customer's specs



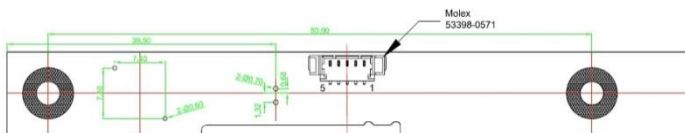
Dimensions



Top View



Side View



Bottom View

Lens Specification

- Focusing Range: 10cm to infinity
- Focal Length: 3.5 mm
- F Number: 2.6
- Fov (H): 65 °
- TV Distortion: <0.3%
- Sensor: OV3640

Interface (Molex: 53398-0571)

5 Pin USB Connector	
Pin No.	Name
1	USB_5V
2	USB_D-
3	USB_D+
4	GND
5	Shield_Ground



Leopard Imaging Inc.

1130 Cadillac Ct., Milpitas, CA 95035, USA
 Phone: +1-408-263-0988
 Fax: +1-408-217-1960
 Email: sales@leopardimaging.com
 Website: www.leopardimaging.com
 www.leopard-security.com

Specification

General Behavior	
Video Resolution @ Frame rate	2048 x 1536 YUV @ 3 fps 1600 x 1200 YUV @ 3 fps 1280 x 1024 YUV @ 4 fps 640 x 480 YUV @ 30 fps 320 x 240 YUV @ 30 fps 2048 x 1536 MJPEG @ 15 fps 1600 x 1200 MJPEG @ 15 fps 1280 x 1024 MJPEG @ 10 fps 1024 x 768 MJPEG @ 30 fps 800 x 600 MJPEG @ 30 fps 640 x 480 MJPEG @ 30 fps 320 x 240 MJPEG @ 30 fps
Adjustment	The following can be adjusted manually: Brightness, Contrast, Hue, Saturation, Sharpness, Gamma, White Balance (default: Auto), Backlight Comp, Gain, Focus (Auto Only), Exposure (default: Auto).
Interface (Optical)	
Sensor specification	OmniVision OV3640 sensor
Shutter	Rolling
Format	1/4"
Resolution	H:2048, V:1536
Pixel size	H: 1.75 um, V: 1.75 um
Interface (Electrical)	
Interface	USB 2.0
Supply voltage	USB 2.0 +5 VDC power source
Current consumption	Approx. 210 mA at 5 VDC
Interface (Mechanical)	
Dimensions	L: 100 mm, W: 12 mm, H: 6 mm
Mass	3 g
Environmental	
Max. temperature (operation)	0 °C ~ 50 °C (32 °F~ 122 °F)
Max. temperature (storage)	-20 °C ~ 80 °C (-4 °F~176 °F)
Max. humidity (operation)	20 % ~ 80 %, relative, non-condensing
Max. humidity (storage)	20 % ~ 80 %, relative, non-condensing



Leopard Imaging Inc.

1130 Cadillac Ct., Milpitas, CA 95035, USA
Phone: +1-408-263-0988
Fax: +1-408-217-1960
Email: sales@leopardimaging.com
Website: www.leopardimaging.com
www.leopard-security.com

X-ON Electronics

Largest Supplier of Electrical and Electronic Components

Click to view similar products for [Cameras & Camera Modules](#) category:

Click to view products by [Leopard Imaging](#) manufacturer:

Other Similar products are found below :

[FH-SC](#) [CAMOV5645](#) [73-540-420I](#) [Web Camera module 5.0M pixel](#) [LI-IMX424-GMSL2-070H](#) [73-951-0046](#) [73-954-0001T](#) [73-961-0005](#)
[1202](#) [1203](#) [73-961-0003](#) [73-961-0012](#) [107139](#) [106983](#) [107115](#) [107149](#) [107142](#) [82535IVCHVM](#) [107140](#) [107113](#) [107112](#) [107141](#) [107147](#)
[107148](#) [107110](#) [107150](#) [107145](#) [107111](#) [OKY3553](#) [10299](#) [10300](#) [11388](#) [613](#) [EP-DCINTELD-415](#) [1386](#) [4321](#) [4561](#) [43203](#) [104002](#)
[105716](#) [105993](#) [107206](#) [107645](#) [107646](#) [107655](#) [108010](#) [108172](#) [108173](#) [CLEO-CAM1](#) [107114](#)