



LEOPARD IMAGING INC

LI-AR0231-GMSL2-CFM-xxxH-yyy Data Sheet

Key Features

- ON SEMI 2.3MP AR0231 Sensor
- Optical format: 1/2.7"
- Maximum resolution: 1920H x 1020V
- Pixel size: 3 um x 3 um
- YUV or Raw output without compression
- Includes AP0200 ISP (YUV) or No ISP (RAW)
- Includes IMU or No IMU
- Lens: FOV H 36 / 57 / 120 / 176 / 200
- GMSL2 Serializer
- Phantom powered over GMSL cable
- Connector: FAKRA Z TYPE
- 7V - 24V @ <2W, protected from load-dump transients up to 45V
- Water proof: IP67 (-1yy version)
- Operation Temp: -40 ~ 85 °C
- Storage Temp: -40 ~ 105 °C
- Weight: 50 g
- Part#:

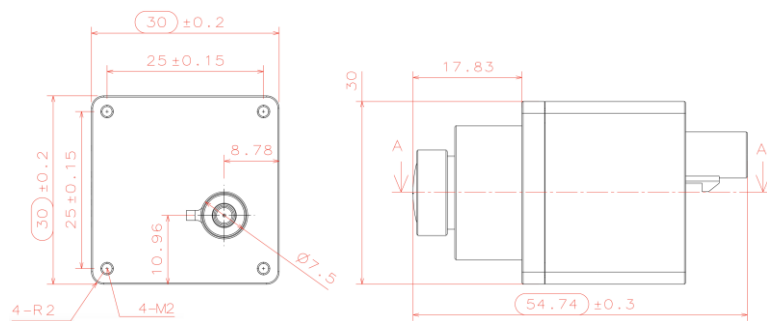
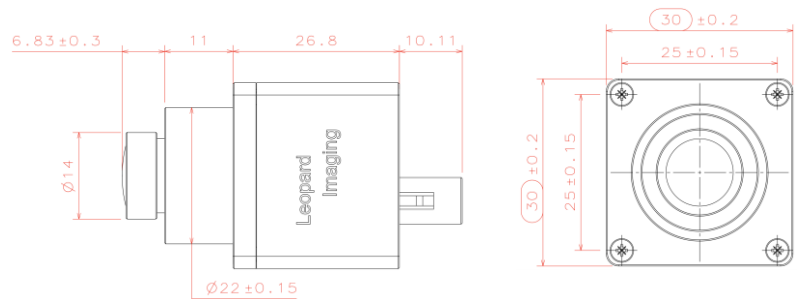
LI-AR0231-GMSL2-CFM-xxxH-yyy



Application

- Automotive ADAS
- 1080p30 video applications
- ADAS + Viewing Fusion

Dimensions

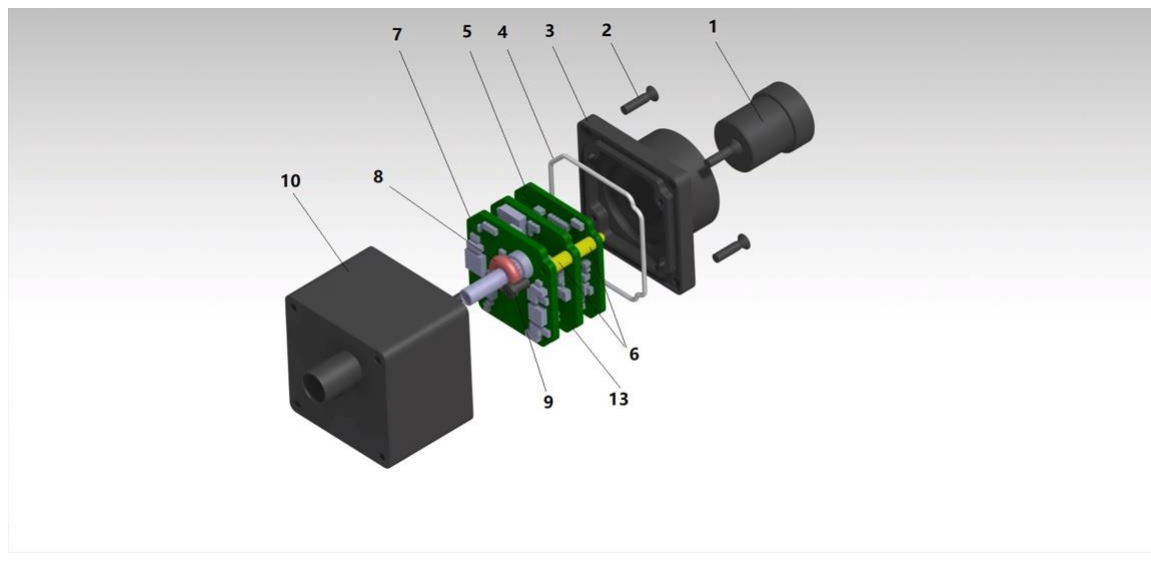


Leopard Imaging Inc.

48820 Kato Road, Suite 100B, Fremont, CA 94538, USA
 Phone: +1-408-263-0988
 Fax: +1-408-217-1960
 Email: sales@leopardimaging.com
 Website: www.leopardimaging.com

BOM

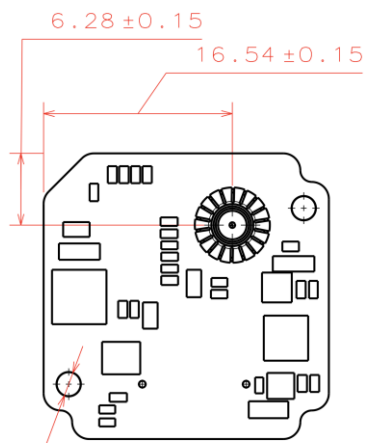
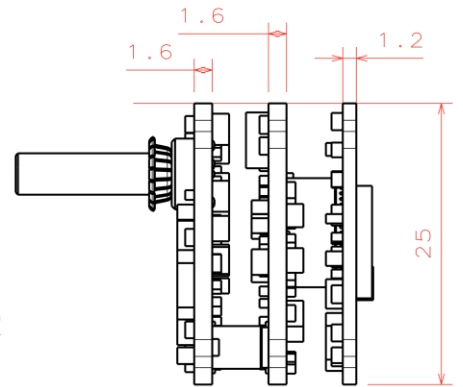
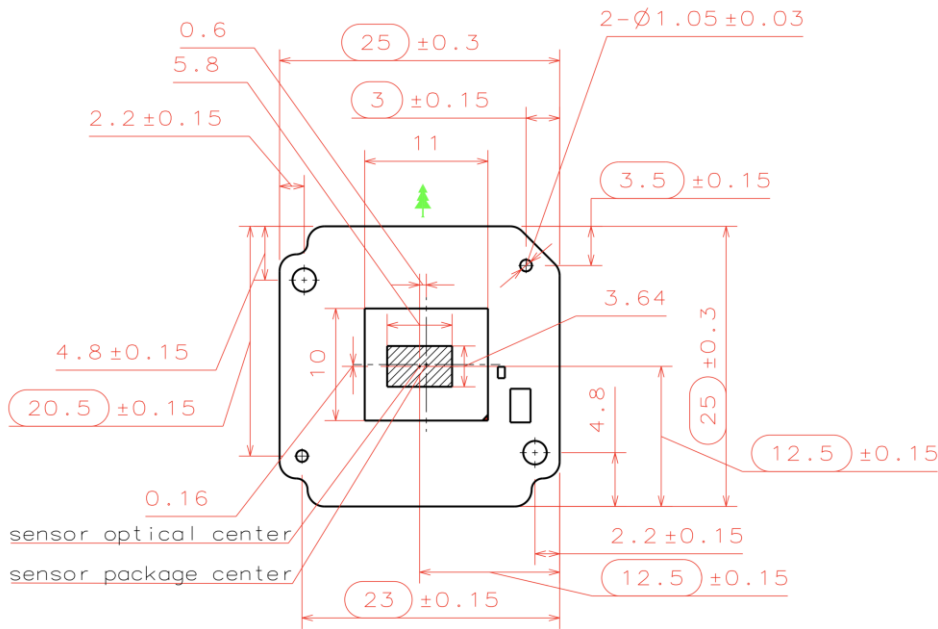
#	Name	SPEC	QTY/SET
1	M12 Lens	DSL934 DSL978 DSL388 DSL224 F132B0108WM12	1
2	Screw	KM2*8 black STAINLESS 304	4
3	Shell 2	AL6061-T6 BLACK Anodizing	1
4	Sealing ring	Silicon rubber, White	1
5	LI-AR0231-CAM	AR0231 sensor board	1
6	Copper pillar	M2*5+4	4
7	LI-GMSL2-P	GMSL2 board	1
8	O ring	7*2.4 Silicon rubber Red	1
9	Screw	M2*4 black ZINC	2
10	Shell 1	AL6061-T6 BLACK Anodizing	1
13	LI-AP0200-ISP	AP0200 ISP board	1



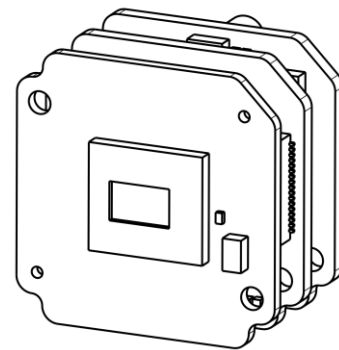
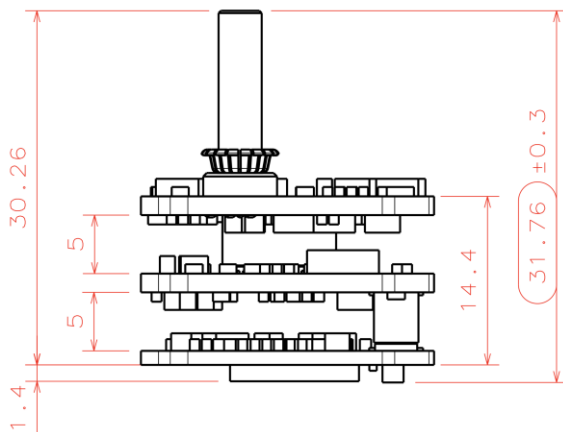
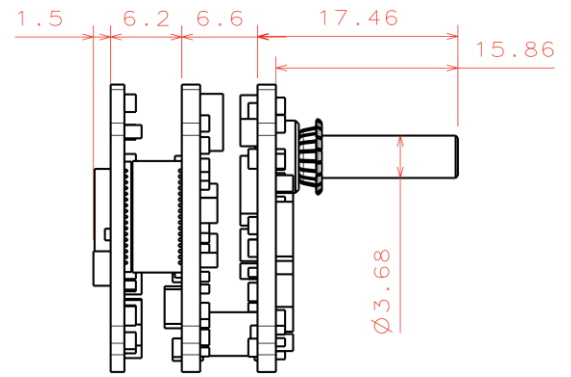
Leopard Imaging Inc.

48820 Kato Road, Suite 100B, Fremont, CA 94538, USA
 Phone: +1-408-263-0988
 Fax: +1-408-217-1960
 Email: sales@leopardimaging.com
 Website: www.leopardimaging.com

Camera boards Dimensions



2-∅2.1 ± 0.05



Leopard Imaging Inc.

48820 Kato Road, Suite 100B, Fremont, CA 94538, USA
 Phone: +1-408-263-0988
 Fax: +1-408-217-1960
 Email: sales@leopardimaging.com
 Website: www.leopardimaging.com

Water Proof

- Metal Housing
- Water-proof M12 lens
- Sealed Gasket (White)
- Sealed O-ring (Red)

Note: the lens must be glued for water-proof.



Cable Connector

- Housing Connector- FAKRA Z Type
- Cable length: 3 meters
Support single Coax Cable transmit up to 15 meters
- Cable Part#: FAK-SMZSMZ-3M
- FAKRA type connectors



Leopard Imaging Inc.

48820 Kato Road, Suite 100B, Fremont, CA 94538, USA
Phone: +1-408-263-0988
Fax: +1-408-217-1960
Email: sales@leopardimaging.com
Website: www.leopardimaging.com

Ordering Information

Part#: LI-AR0231-GMSL2-CFM-xxxH-yyy

- xxx (Lens FOV)
 - o 036
 - o 057
 - o 120
 - o 176
 - o 200
- yyy (- glue/screw, ISP or noISP, IMU or noIMU)
 - o Glue / Screw (lens)
 - 1: Glue
 - 0: Screw
 - o ISP
 - 1: ISP
 - 0: No ISP
 - o IMU
 - 1: IMU
 - 0: No IMU

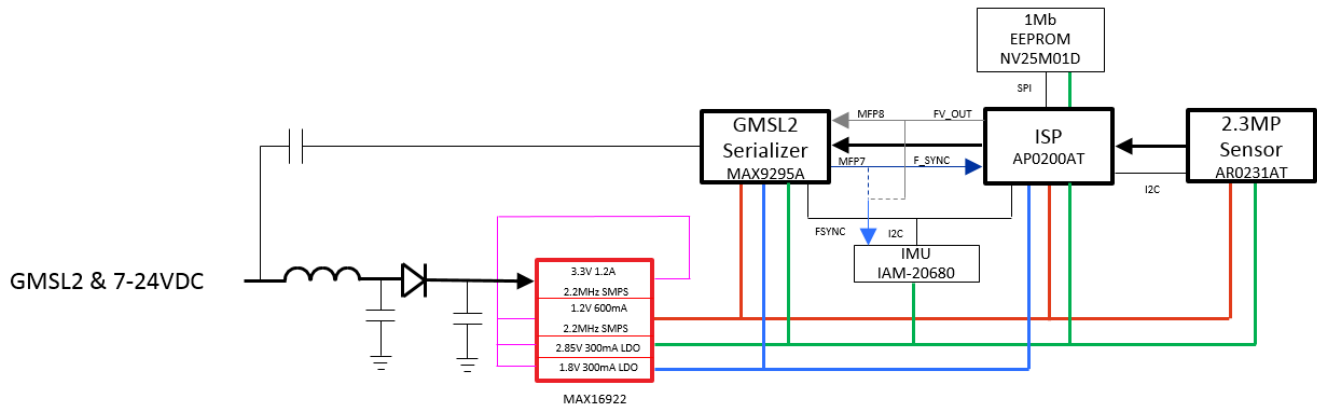
LI-AR0231-GMSL2-CFM-036H-yyy	LI-AR0231-GMSL2-CFM-057H-yyy	LI-AR0231-GMSL2-CFM-120H-yyy
<p>Lens: DSL934 Lens EFL: 9.0 mm F/#: 3.0 Distortion: <2% FOV(H): 36°</p>	<p>Lens: DSL978 Lens EFL: 5.9 mm F/#: 1.6 Distortion: <-15% FOV(H): 57°</p>	<p>Lens: DSL388 Lens EFL: 2.7 mm F/#: 2.9 Distortion: +15% FOV(H): 120°</p>
LI-AR0231-GMSL2-CFM-176H-yyy	LI-AR0231-GMSL2-CFM-200H-yyy	
<p>Lens: DSL224 Lens EFL: 2.16 mm F/#: 2.0 Distortion: -8.5% FOV(H): 176°</p>	<p>Lens: F132B0108WM12 Lens EFL: 1.08 mm F/#: 2.6 Distortion: <-7.71% FOV(H): 200°</p>	



Leopard Imaging Inc.

48820 Kato Road, Suite 100B, Fremont, CA 94538, USA
 Phone: +1-408-263-0988
 Fax: +1-408-217-1960
 Email: sales@leopardimaging.com
 Website: www.leopardimaging.com

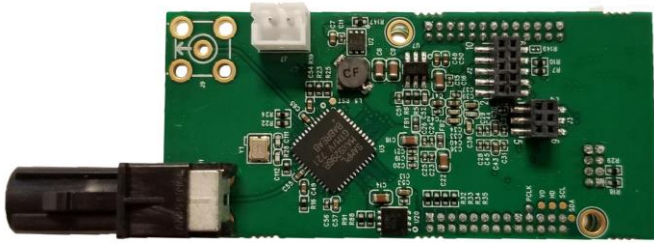
Camera Block Diagram



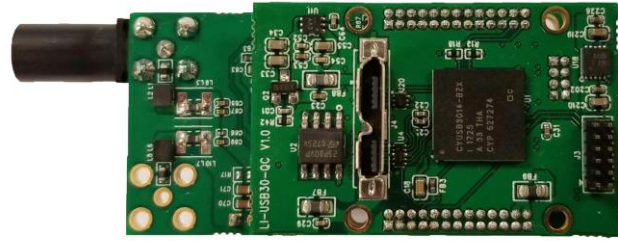
Leopard Imaging Inc.

48820 Kato Road, Suite 100B, Fremont, CA 94538, USA
 Phone: +1-408-263-0988
 Fax: +1-408-217-1960
 Email: sales@leopardimaging.com
 Website: www.leopardimaging.com

LI-USB30-DESER-GMSL2-QC



Front View



Back View

LI-AR0231-GMSL2-CFM-xxxH-yyy can connect to LI-USB30-DESER-GMSL2-QC as a USB 3.0 camera.

Part#: [LI-USB30-AR0231-GMSL2-CFM-xxxH-yyy](#)

Key Features

- USB 3.0 Super Speed support
- YUV or Raw output without compression
- UVC compliance
- Provide customization services
- 12VDC Power Supply
- Weight: 91 g
- Single Coax Cable transmit up to 15 meter PoC(Power over Cable)
- Support 1920x1020@28.7fps

SDK Supported

- Camera Tool Source Code in C#
- Capture & Display



Revision History

Revision	Description	Release Date
1.0	First Release	19. Sep. 2018
1.1	Update to new part# and add 200 degree lens	29. Sep. 2018



X-ON Electronics

Largest Supplier of Electrical and Electronic Components

Click to view similar products for [Cameras & Camera Modules](#) category:

Click to view products by [Leopard Imaging](#) manufacturer:

Other Similar products are found below :

[FH-SC](#) [CAMOV5645](#) [73-540-420I](#) [Web Camera module 5.0M pixel](#) [LI-IMX424-GMSL2-070H](#) [73-951-0046](#) [73-954-0001T](#) [73-961-0005](#)
[1202](#) [1203](#) [73-961-0003](#) [73-961-0012](#) [107139](#) [106983](#) [107115](#) [107149](#) [107142](#) [82535IVCHVM](#) [107140](#) [107113](#) [107112](#) [107141](#) [107147](#)
[107148](#) [107110](#) [107150](#) [107145](#) [107111](#) [OKY3553](#) [10299](#) [10300](#) [11388](#) [613](#) [EP-DCINTELD-415](#) [1386](#) [4321](#) [4561](#) [43203](#) [104002](#)
[105716](#) [105993](#) [107206](#) [107645](#) [107646](#) [107655](#) [108010](#) [108172](#) [108173](#) [CLEO-CAM1](#) [107114](#)