



LEOPARD IMAGING INC

# LI-USB30-V034

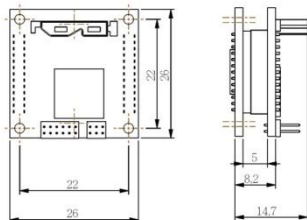
## Data Sheet

### Overview

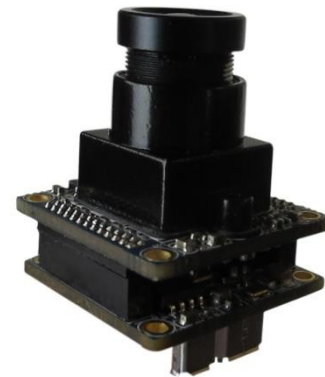
Leopard Imaging USB 3.0 camera is new generation super speed USB Video camera which supports more than 3G video bandwidth to stream 1080p 30fps video without compression, it provides sharper and high quality images for scientific and medical industries, Global shutter camera can support high speed conveyor line for machine vision application, lossless image quality and low latency streaming is great for video conference camera industry.

### Applications

- Machine Vision
- Medical Camera
- Scientific Camera



RAW data streaming



### Key Features

- USB 3.0 Super Speed support
- RAW data output without compression
- UVC compliance
- USB 2.0 backwards compatible
- Support either CS or M12 lens
- Provide customization services
- USB +5VDC powered device
- Compact Size: 26mmx26mm
- 2 Boards are stacked



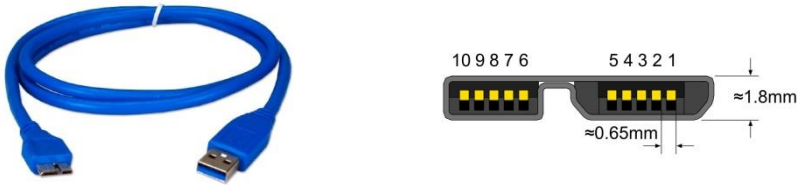
Camera Tool view mode



Leopard Imaging Inc.

1130 Cadillac Ct., Milpitas, CA 95035, USA  
Phone: +1-408-263-0988  
Fax: +1-408-217-1960  
Email: sales@leopardimaging.com  
Website: www.leopardimaging.com  
www.leopard-security.com

# Specification

Sensor	Aptina MT9V034 Global Shutter WVGA Sensor
Active Pixels	752H x 480V
Optical format	1/3"
Pixel size	6.0x6.0um
Resolution	VGA (640 x 480), 240P (320 x 240)
Streaming	Support VGA 60fps and 240P 75fps video streaming
Data type	RAW data USB 3.0 real time streaming
Color	Monochrome
Global Shutter	For high speed application
Lens	CS / M12 lens mount support (Default: M12 lens)
Interface	USB 3.0 interface
Power	USB 3.0 +5VDC power source
Compact size	26mmx26mm
Part#	LI-USB30-V034
Computer	<ul style="list-style-type: none"> <li>With USB 3.0 Port. The port can be realized via a mainboard-based host adapter or via a separately installed host adapter card</li> <li>USB 2.0 backwards compatible</li> </ul>
USB cable for USB 3.0 Micro-B Port	
Operation System	32 bit / 64 bit Microsoft Windows XP SP3 32 bit / 64 bit Microsoft Windows 7 32 bit / 64 bit Microsoft Windows 8
Software	Leopard Imaging Camera Tool GraphEdit AMcap Other video capture software
Temperature and Humidity	<ul style="list-style-type: none"> <li>Housing temperature during operation: 0 °C ~ 50 °C (32 °F~ 122 °F)</li> <li>Humidity during operation: 20 % ~80 %, relative, non-condensing</li> <li>Storage temperature: -20 °C ~80 °C (-4 °F~176 °F)</li> <li>Storage humidity: 20 %~ 80 %, relative, non-condensing</li> </ul>



Leopard Imaging Inc.

1130 Cadillac Ct., Milpitas, CA 95035, USA  
 Phone: +1-408-263-0988  
 Fax: +1-408-217-1960  
 Email: sales@leopardimaging.com  
 Website: www.leopardimaging.com  
 www.leopard-security.com

## X-ON Electronics

Largest Supplier of Electrical and Electronic Components

*Click to view similar products for [Cameras & Camera Modules](#) category:*

*Click to view products by [Leopard Imaging](#) manufacturer:*

Other Similar products are found below :

[FH-SC](#) [CAMOV5645](#) [73-540-420I](#) [Web Camera module 5.0M pixel](#) [LI-IMX424-GMSL2-070H](#) [73-951-0046](#) [73-954-0001T](#) [73-961-0005](#)  
[1202](#) [1203](#) [73-961-0003](#) [73-961-0012](#) [107139](#) [106983](#) [107115](#) [107149](#) [107142](#) [82535IVCHVM](#) [107140](#) [107113](#) [107112](#) [107141](#) [107147](#)  
[107148](#) [107110](#) [107150](#) [107145](#) [107111](#) [OKY3553](#) [10299](#) [10300](#) [11388](#) [613](#) [EP-DCINTELD-415](#) [1386](#) [4321](#) [4561](#) [43203](#) [104002](#)  
[105716](#) [105993](#) [107206](#) [107645](#) [107646](#) [107655](#) [108010](#) [108172](#) [108173](#) [CLEO-CAM1](#) [107114](#)