

# Switching diode

**• Applications**

High speed switching

**• Features**

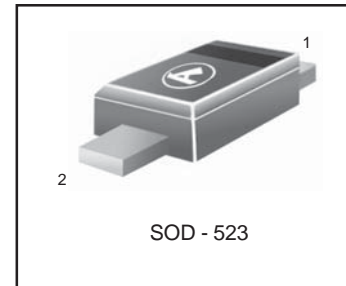
- 1) Extremely small surface mounting type.
- 2) High Speed.
- 3) High reliability.

**• Construction**

Silicon epitaxial planar

- We declare that material of product compliance with ROHS requirements.

**L1SS400T1G**



**ABSOLUTE MAXIMUM RATINGS (Ta = 25°C)**

Parameter	Symbol	Limits	Unit
Peak reverse voltage	$V_{RM}$	90	V
DC reverse voltage	$V_R$	80	V
Peak forward current	$I_{FM}$	225	mA
Mean rectifying current	$I_O$	100	mA
Surge current (1s)	$I_{surge}$	500	mA
Junction temperature	$T_J$	150	°C
Storage temperature	$T_{stg}$	- 55 ~ +150	°C

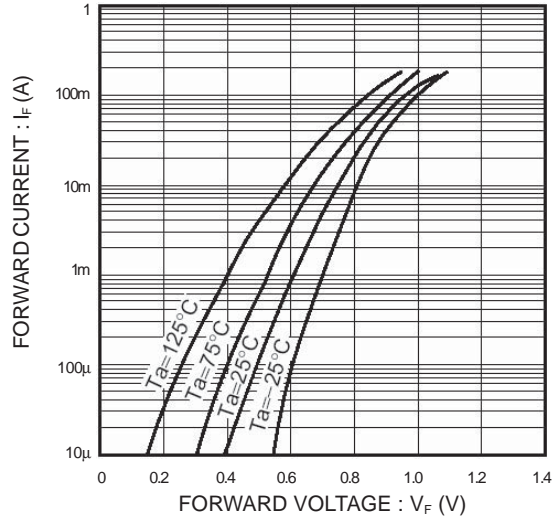
**ELECTRICAL CHARACTERISTICS (Ta = 25°C)**

Parameter	Symbol	Min.	Typ.	Max.	Unit	Conditions
Forward voltage	$V_F$	-	-	1.2	V	$I_F=100mA$
Reverse current	$I_R$	-	-	0.1	$\mu A$	$V_R=80V$
Capacitance between terminals	$C_T$	-	0.72	3.0	pF	$V_R=0.5V, f=1MHz$
Reverse recovery time	$t_{rr}$	-	-	4	ns	$V_R=6V, I_F=10mA, R_L=100$

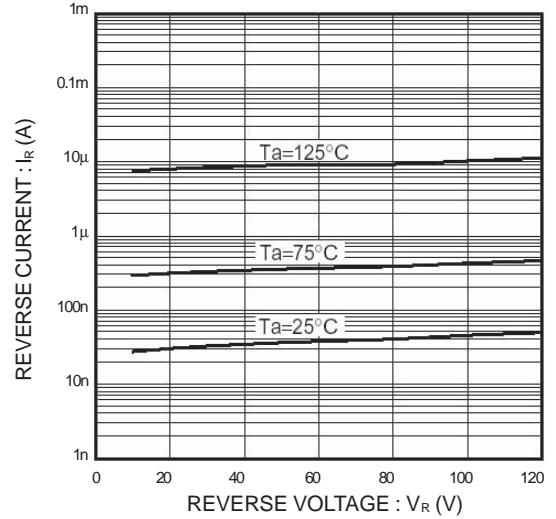
**ORDRING INFORMATION**

Device	Marking	Shipping
L1SS400T1G	A	3000/Tape&Reel
L1SS400T3G	A	10000/Tape&Reel

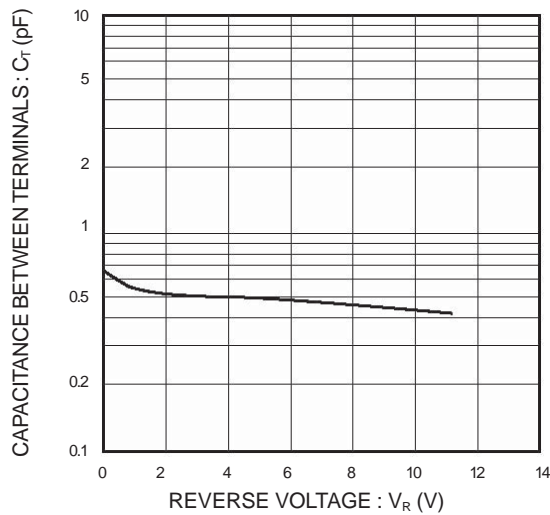
**ELECTRICAL CHARACTERISTIC CURVES**  
( $T_a = 25^\circ\text{C}$ )



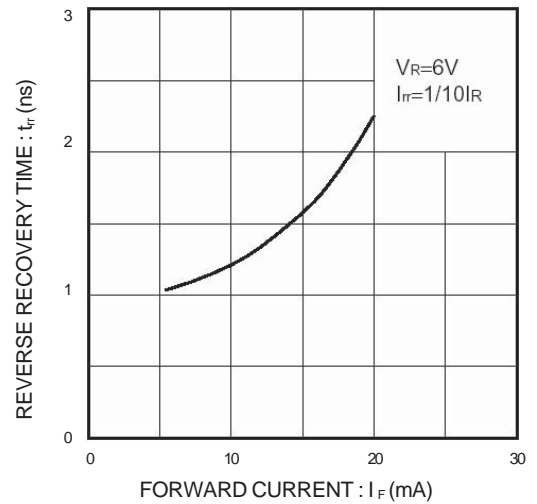
**Fig.1 Forward characteristics**



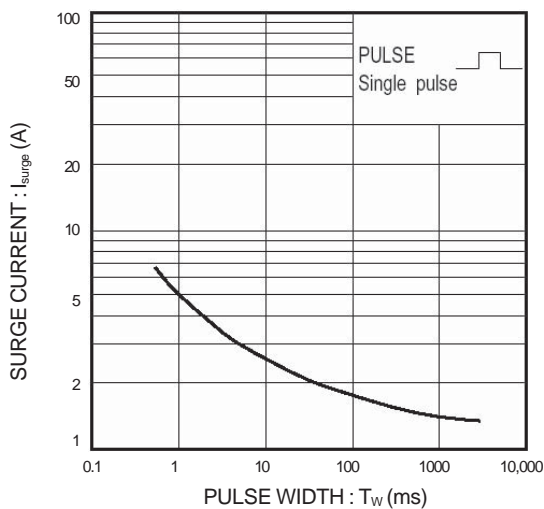
**Fig.2 Reverse characteristics**



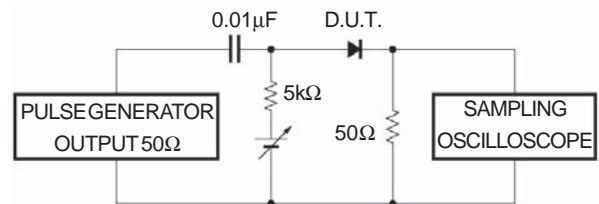
**Fig.3 Capacitance between terminals**



**Fig.4 Reverse recovery time characteristics**



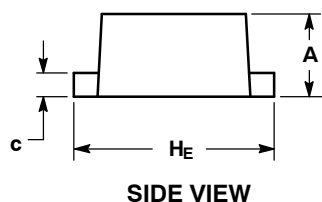
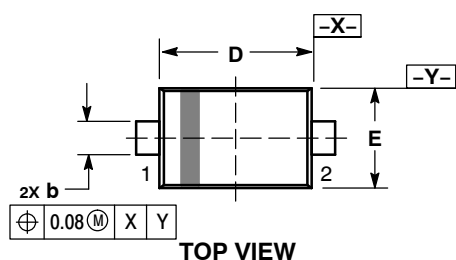
**Fig.5 Surge current characteristics**



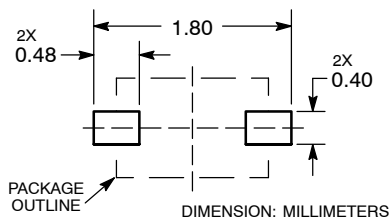
**Fig.6 Reverse recovery time ( $t_{rr}$ ) measurement circuit**

L1SS400T1G

SOD-523



**RECOMMENDED SOLDERING FOOTPRINT\***



NOTES:

1. DIMENSIONING AND TOLERANCING PER ASME Y14.5M, 1994.
2. CONTROLLING DIMENSION: MILLIMETERS.
3. MAXIMUM LEAD THICKNESS INCLUDES LEAD FINISH. MINIMUM LEAD THICKNESS IS THE MINIMUM THICKNESS OF BASE MATERIAL.
4. DIMENSIONS D AND E DO NOT INCLUDE MOLD FLASH, PROTRUSIONS, OR GATE BURRS.

DIM	MILLIMETERS		
	MIN	NOM	MAX
A	0.50	0.60	0.70
b	0.25	0.30	0.35
c	0.07	0.14	0.20
D	1.10	1.20	1.30
E	0.70	0.80	0.90
H <sub>E</sub>	1.50	1.60	1.70
L	0.30 REF		
L2	0.15	0.20	0.25

## X-ON Electronics

Largest Supplier of Electrical and Electronic Components

*Click to view similar products for* [Diodes - General Purpose, Power, Switching category:](#)

*Click to view products by* [Leshan manufacturer:](#)

Other Similar products are found below :

[MMBD3004S-13-F](#) [RD0306T-H](#) [DSE010-TR-E](#) [BAV17-TR](#) [BAV19-TR](#) [1N3611](#) [NTE156A](#) [NTE574](#) [NTE6244](#) [1SS181-TP](#) [1SS193,LF](#)  
[1SS400CST2RA](#) [SDAA13](#) [SHN2D02FUTW1T1G](#) [LS4151GS08](#) [1N4449](#) [1N456A](#) [1N4934-E3/73](#) [1N914B](#) [1N914BTR](#) [1SS226-TP](#)  
[RFUH20TB3S](#) [D291S45T](#) [BAV300-TR](#) [BAW56DWQ-7-F](#) [BAW75-TAP](#) [MM230L-CAA](#) [IDW40E65D1](#) [JAN1N3600](#) [LL4151-GS18](#)  
[053684A](#) [SMMSD4148T3G](#) [707803H](#) [NSVDAN222T1G](#) [CDSZC01100-HF](#) [LL4150-M-08](#) [BAV199E6433HTMA1](#) [BAS28-7](#)  
[BAW56HDW-13](#) [BAS28 TR](#) [VS-HFA04SD60STR-M3](#) [NSVM1MA152WKT1G](#) [RGP30D-E3/73](#) [BAV99TQ-13-F](#) [BAS21DWA-7](#) [NTE6250](#)  
[NTE582-4](#) [NTE582-6](#) [MMDB30-E28X](#) [VS-HFA04SD60SL-M3](#)